



# SWITCHBLADE

5 ft & 6 ft Sickle Bar Mower  
with Mechanical Spring Break-Away

Rev 01-14

Part No. 02979443

## ARCHIVE PARTS MANUAL



**ALAMO INDUSTRIAL**

1502 E. Walnut  
Seguin, Texas 78155  
830-372-9595

### ¡ATENCIÓN!

LEA EL INSTRUCTIVO

Si No Lee Ingles, Pida Ayuda a Alguien  
Que Si Lo Lea Para Que le Traduzca las  
Medidas de Seguridad.



An Operator's Manual was shipped with the equipment in the Manual Canister. This Operator's Manual is an integral part of the safe operation of this machine and must be maintained with the unit at all times. **READ, UNDERSTAND, and FOLLOW** the Safety and Operation Instructions contained in this manual before operating the equipment. If the Operator's Manual is not with the equipment, contact your dealer or Alamo Industrial (800-356-6286) to obtain a Free copy before operating the equipment.

# TO THE OWNER/OPERATOR/DEALER

All implements with moving parts are potentially hazardous. There is no substitute for a cautious, safe-minded operator who recognizes the potential hazards and follows reasonable safety practices. The manufacturer has designed this implement to be used with all its safety equipment properly attached to minimize the chance of accidents.

**BEFORE YOU START!!** Read the safety messages on the implement and shown in your manual.  
Observe the rules of safety and common sense!



# DANGER

**FAILING TO FOLLOW SAFETY MESSAGES AND OPERATING INSTRUCTION CAN CAUSE SERIOUS BODILY INJURY OR EVEN DEATH TO OPERATOR AND OTHERS IN THE AREA.**

1. 	2. NO RIDERS. NO CHILDREN OPERATORS. 	3. USE SAFETY SHOES, HARD HAT, SAFETY GLASSES, SEAT BELTS, ROPS & OPS. 	4. BLOCK UP SECURELY BEFORE WORKING UNDER. 
---	---	--	---

1. Study and understand Operator's Manuals, Safety Decals, and Instructional Decals for tractor and implement to prevent misuse, abuse, and accidents. Practice before operating in a confined area or near passersby.  
• Learn how to stop engine suddenly in an emergency. Be alert for passersby and especially children.

2. Allow no children on or near folding mower or tractor. Allow no riders on tractor or implement. Falling off may cause serious injury or death from being run over by tractor or mower or contact with rotating blades.

3. Operate only with tractor having Roll-Over Protective Structure (ROPS) and with seat belt securely fastened to prevent injury and possible death from falling off or tractor overturn.  
• Personal Protective Equipment such as Hard Hat, Safety Glasses, Safety Shoes, & Ear Plugs are recommended.

4. Block up or support raised machine and all lifted components securely before putting hands or feet under or working underneath any lifted component to prevent crushing injury or death from sudden dropping or inadvertent operation of controls. Make certain area is clear before lowering or folding.

5. Before transporting, put Lift Lever in detent or full-lift position. Install Transport Safety Devices securely on folding mowers. Put Booms securely in Transport Rest.

• Folding and Boom Mowers have raised center of gravity. Slow down when turning and on hillsides.

6. Make certain that SMV sign, warning lights, and reflectors are clearly visible. Follow local traffic codes.

7. Never operate with Cutting Head or Folding Section raised if passersby, bystanders, or traffic are in the area to reduce possibility of injury or death from objects thrown by Blades under Guards or mower structure.

8. Before dismounting, secure implement in transport position or lower to ground.  
• Put tractor in park or set brake, disengage PTO, stop engine, remove key, and wait until noise of rotation has ceased to prevent crushing by entanglement in rotating parts which could cause injury or death.  
• Never mount or dismount a moving vehicle. Crushing from runover may cause serious injury or death.

5. TRANSPORT SAFELY, LOCK UP. 	6. USE SMV, LIGHTS, & REFLECTORS. 	7. DO NOT OPERATE WITH CUTTER OR WING RAISED 	8. DO NOT MOUNT OR DISMOUNT WHILE MOVING. 
--	--	--	--

02967827

## WARRANTY INFORMATION:

Read and understand the complete Warranty Statement found in this Manual. Fill out the Warranty Registration Form in full and return it within 30 Days. Make certain the Serial Number of the Machine is recorded on the Warranty Card and on the Warranty Form that you retain. The use of "will-fit" parts will void your warranty and can cause catastrophic failure with possible injury or death.

# BOLT TORQUE

Mounting procedures for mowers will require a significant amount of bolt nut and washer installation.

Frame and structure mounting bolts should be installed using *Red Loctite*, and torqued to the dry values listed in the torque chart based on the bolt size and hardness.

Other structures such as pump mounting bolts should be installed with *Blue Loctite* and torqued to the dry values indicated in the chart.

Bolt tightness should be completed with and checked with a suitable torque wrench.

Torque checks should be completed throughout the life of the mower in accordance with the maintenance chart provided in this manual.



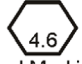

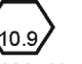
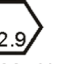
Loose bolts on a frame or in a casting may be a result of:

- Vibration from the mower due to imbalance of the mower blades
- Pulled threads due to over tightening
- Distortion of the hole due to under tightening during installation

Bolts broken or sheared in the mounting structure or tractor may be the result of:

- Improper alignment of the Mounting Plate or Structure such that it is not sitting flat on the mating surface
- Distortion of the bolt due to over-tightening
- Under tightening of the bolts

Check the bolt torque during installation and prior to delivery with a suitable torque wrench.

Proper Torque Values for Standard Bolts			Proper Torque Values for Metric Bolts				
Bolt Diameter			Bolt Diameter				
	Head Marking Three Lines Grade Five	Head Marking Six Lines Grade Eight		Head Marking 4.6	Head Marking 8.8 or 9.8	Head Marking 10.9	Head Marking 12.9
	Pound - Foot Value Dry	Pound - Foot Value Dry		Pound - Foot Value Dry	Pound - Foot Value Dry	Pound - Foot Value Dry	Pound - Foot Value Dry
1/4"	7	10	6mm	3	7	9	10
5/16"	15	22	8mm	6.2	16	23	24
3/8"	26	39	10mm	12	32	45	47
7/16"	42	60	12mm	21	55	79	81
1/2"	64	88	14mm	34	88	126	130
9/16"	100	134	16mm	53	137	196	202
5/8"	128	180	18mm	73	189	270	279
3/4"	227	320	20mm	104	267	382	394
7/8"	365	515	22mm	141	364	520	537
1"	547	772	24mm	179	461	660	680
			27mm	262	676	968	998
			30mm	355	917	1312	1353

To get Newton-Meters multiply pound-foot of torque by 1.356

## CHANGE PAGES

The following is a listing of pages that have been changed since the latest publication date for the overall document.

[illegible]

## CHANGE PAGES

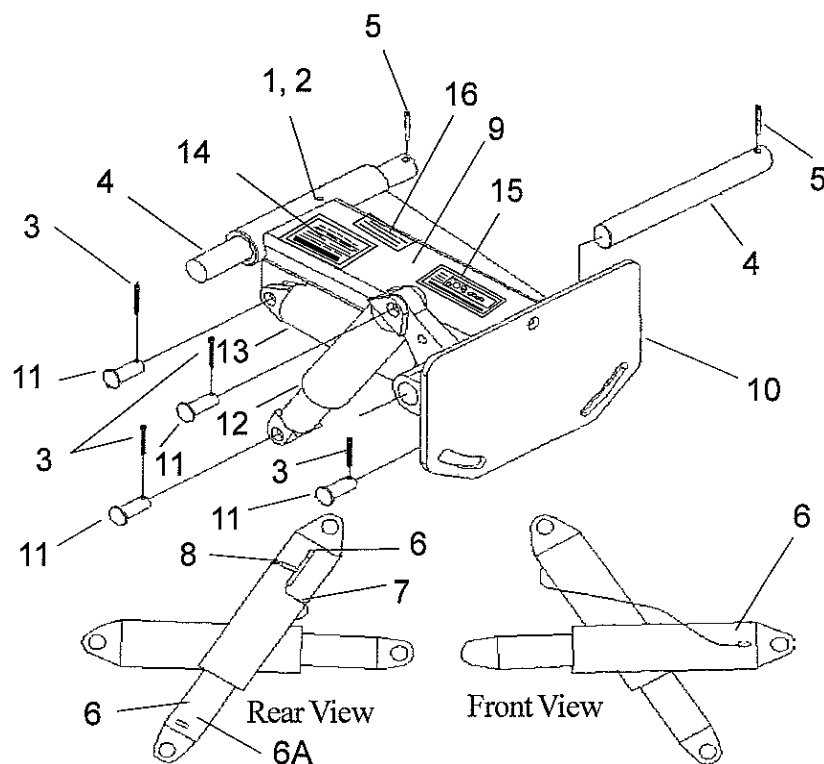
# **PARTS SECTION**

# PART NAME INDEX

CARRIAGE ARM ASY - LH WG - PN 02977721 - (03-01 TO CURRENT).....	5
CARRIAGE ARM ASY - RH WG - PN 02974362 - (03-01 TO CURRENT) .....	4
COMMON COMPONENT BOX - RH WG - (03-01 TO CURRENT).....	12
CUTTER BAR ASY - 5 FT LH WG - PN 02977715 - (03-01 TO CURRENT).....	30
CUTTER BAR ASY - 5 FT RH WG - PN 02974360 - (03-01 TO CURRENT) .....	28
CUTTER BAR ASY - 6 FT LH WG - PN 02977717 - (03-01 TO CURRENT).....	34
CUTTER BAR ASY - 6 FT RH WG - PN 02974372 - (03-01 TO CURRENT) .....	32
DECALS - MOWER LOCATION - (03-01 TO CURRENT) .....	51
DECALS - SAFETY & INSTRUCTIONS I - (03-01 TO CURRENT) .....	49
DECALS - SAFETY & INSTRUCTIONS II - (03-01 TO CURRENT) .....	54
DECALS - TRACTOR LOCATION - (03-01 TO CURRENT) .....	53
HYD CNTRL VALVE ASY - W-FITTINGS - PN 02982077 - (03-01 TO CURRENT) .....	37
HYD CNTRL VALVE ASY - W/O FITTINGS - (03-01 TO CURRENT) .....	38
HYD CNTRL VALVE SOLENOID ASY - (03-01 TO CURRENT).....	36
HYD CYL - BAR LIFT - (03-01 TO CURRENT).....	44
HYD CYL - CURB STOP - (03-01 TO CURRENT).....	45
HYD DIVERter VALVE - CYL CNTRL - PN 02977622 - (03-01 TO CURRENT) .....	47
HYD DIVERter VALVE - MTR CNTRL - PN02992334 - (03-01 TO CURRENT) .....	48
HYD DIVERter VALVES - PN 02992334 - PN 02977622 - (03-01 TO CURRENT).....	46
HYD FILTER ASY - (03-01 TO CURRENT).....	18
HYD MOTOR ASY - (0301 TO CURRENT).....	16
HYD MOTOR KNIFE DRIVE ASY - (03-01 TO CURRENT) .....	19
HYD PUMP ASY - 0.98 / 0.37 CU IN / REV - (03-01 TO 09-04) .....	24
HYD PUMP ASY - 0.98 / 0.37 CU IN / REV - (10-04 TO Current).....	26
HYD PUMP ASY - 1.16 / 0.49 CU IN / REV - (03-01 TO 09-04) .....	20
HYD PUMP ASY - 1.16 / 0.49 CU IN / REV - (10-04 TO Current).....	22
HYD TANK ASY - (03-01 TO CURRENT) .....	14
Knife Bar - 5 ft LH WG - PN 02977716 - w/ Serrated Knives - (03-01 To Current) .....	31
Knife Bar - 5 ft RH WG - PN 02974361 - w/ Serrated Knives - (03-01 To Current) .....	29
Knife Bar - 6 ft LH WG - PN 02977718 - w/ Serrated Knives - (03-01 To Current) .....	35
Knife Bar - 6 ft RH WG - PN 02974373 - w/ Serrated Knives - (03-01 To Current) .....	33
REMOTE CONTROL HANDLES - (03-01 TO CURRENT).....	40
REMOTE CONTROL VALVE STAND - (03-01 TO CURRENT).....	42
Shoe & Brk-a-way Pre-Asy - RH WG - PN 02975986 - (03-01 To Current) .....	10
Shoe & Brk-a-Way Pre-Asy - LH WG - PN 02977726 - (03-01 To Current) .....	11
Shoe, Drive & Brk-a-way Asy - LH WG - PN 02977727 - (03-01 To Current) .....	8
Shoe, Drive & Brk-a-way Asy - RH WG - PN 02975194 - (03-01 To Current).....	6
WIRE HARNESS - DUAL WG - PN 02977754 - (03-01 TO CURRENT) .....	56
WIRE HARNESS - SINGLE WG - PN 02974318 - (03-01 TO CURRENT) .....	57

SWITCHBLADE 5 & 6 FT MECH. BRK-A-WAY - ARCHIVE MAN (08-06)

# CARRIAGE ARM ASY - RH WG - PN 02974362 - (03-01 TO CURRENT)

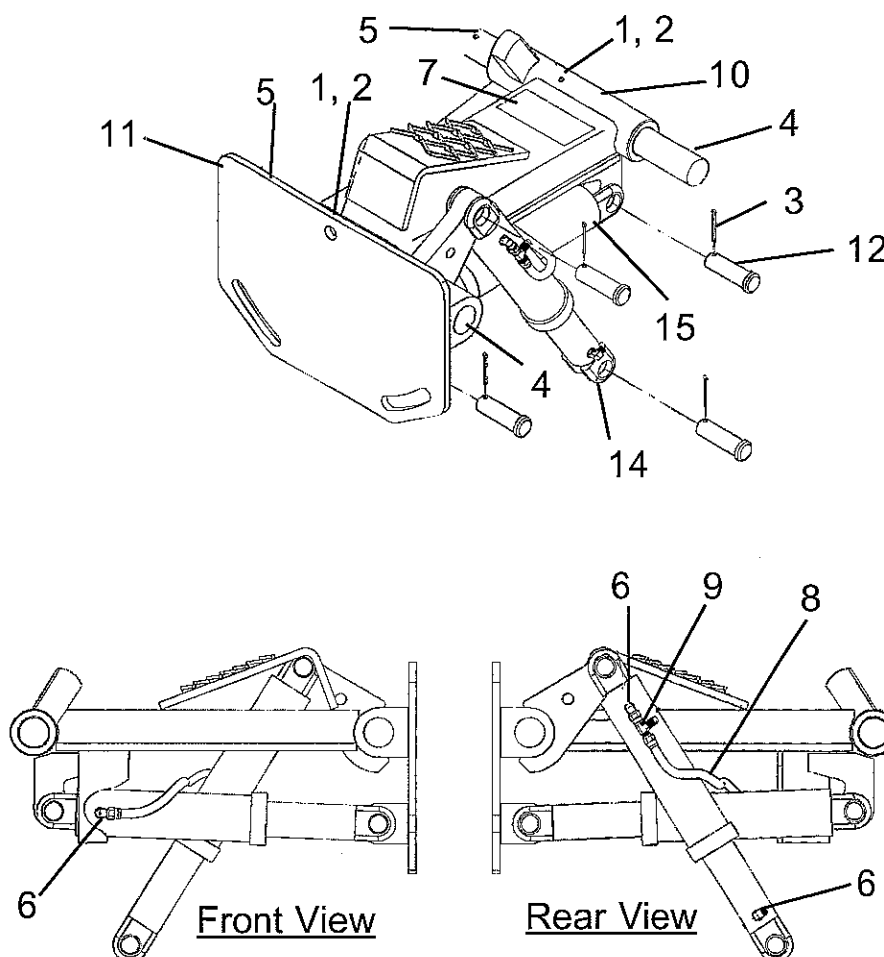


ITEM	PART NO.	QTY.	DESCRIPTION
	<b>02974362</b>	--	<b>CARRIAGE ARM ASY.</b>
1	000206	2	RED LUBRICAPS
2	00752670	2	GREASE FITTING
3	00755153	4	COTTER PIN
4	0112700	2	CARRIAGE PIN
5	0113400	2	PIN ROLL
6	02045200	3	ELBOW
6A	02961325	1	* STRAIGHT ADAPTER, RESTRICTOR
7	02965475	1	HOSE
8	02970702	1	TEE SWIVEL ADAPTER
9	02974324	1	CARRIAGE ARM WLD'MT
10	02974329	1	PIVOT MOUNT WLD'MT
11	0424200	4	CYLINDER LUG PIN
12	0693400A	1	CURB LIFT CYLINDER
13	0693500A	1	BAR TILT CYLINDER

NOTE: Item 6A was not used on all units, it was only used in special cases where the cylinders used did not have built in restrictors and cylinder movement is to fast. Cylinder dould have built in restrictors to prevent the need for external restrictors. Only use this restrictor if needed to slo

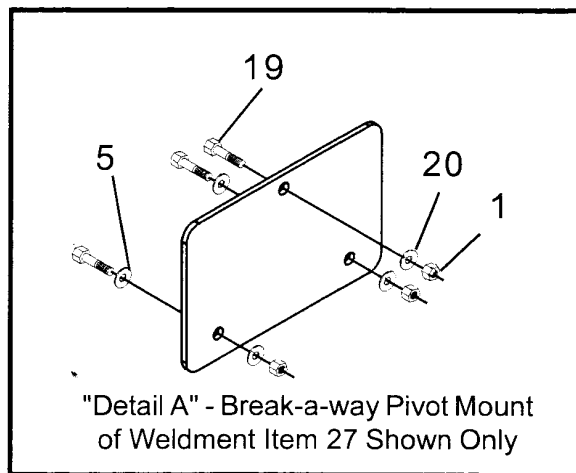


# **CARRIAGE ARM ASY - LH WG - PN 02977721 - (03-01 TO CURRENT)**



ITEM	PART NO.	QTY.	DESCRIPTION
	<b>02977721</b>	--	<b>CARRIAGE ARM ASY, LH WING</b>
1	000206	2	RED LUBRICAPS
2	00752670	2	GREASE FITTING
3	00755153	4	COTTER PIN
4	0112700	2	CARRIAGE PIN
5	0113400	2	PIN ROLL
6	02045200	3	ELBOW
7	02962765	1	DECAL, MULTIPLE HAZARD
8	02965475	1	HOSE, # 4 - 18" LG
9	02970702	1	HYD. ADAPTER
10	02977719	1	CARRIAGE ARM WLD'MT, LH
11	02977720	4	PIVOT MOUNT WLD'MT
12	0424200	1	PIN FOR CYLINDER LUGS
14	0693400A	1	CURB STOP CYLINDER ASY
15	0693500A	1	BAR LIFT CYLINDER ASY

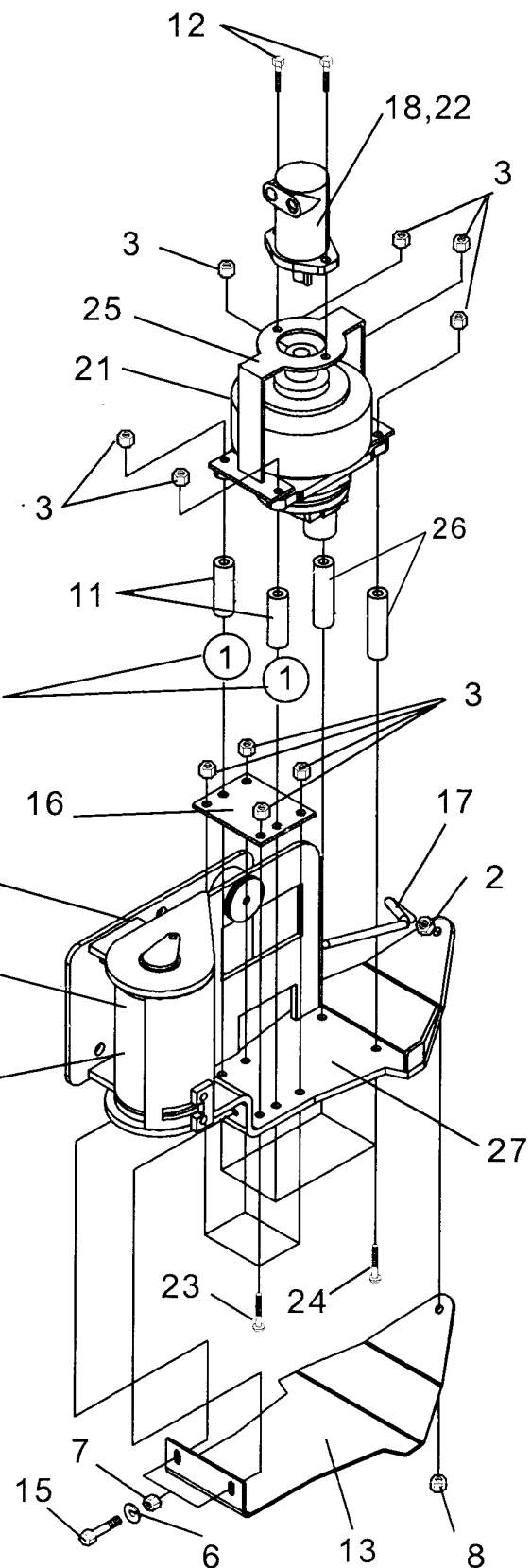
# Shoe, Drive & Brk-a-way Asy - RH WG - PN 02975194 - (03-01 To Current)



Item 1 (3/4" Nut) are Used For Shipping Purposes Only, They Are Removed When Cutter Bat Is Installed

See "Detail A"

Lube Release Pin With Grease After Assembly

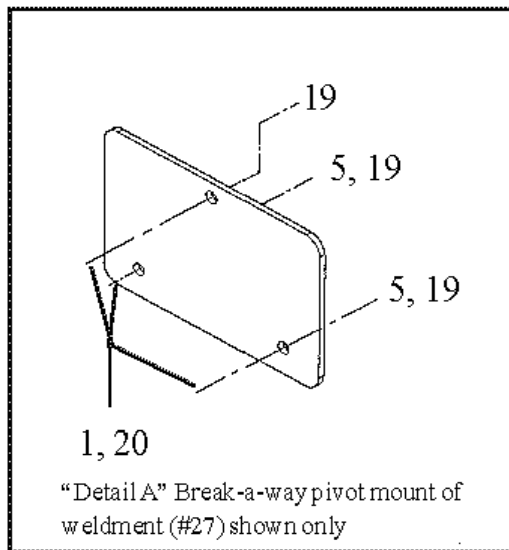


## Shoe, Drive & Brk-a-way Asy - RH WG - PN 02975194 - (03-01 To Current)

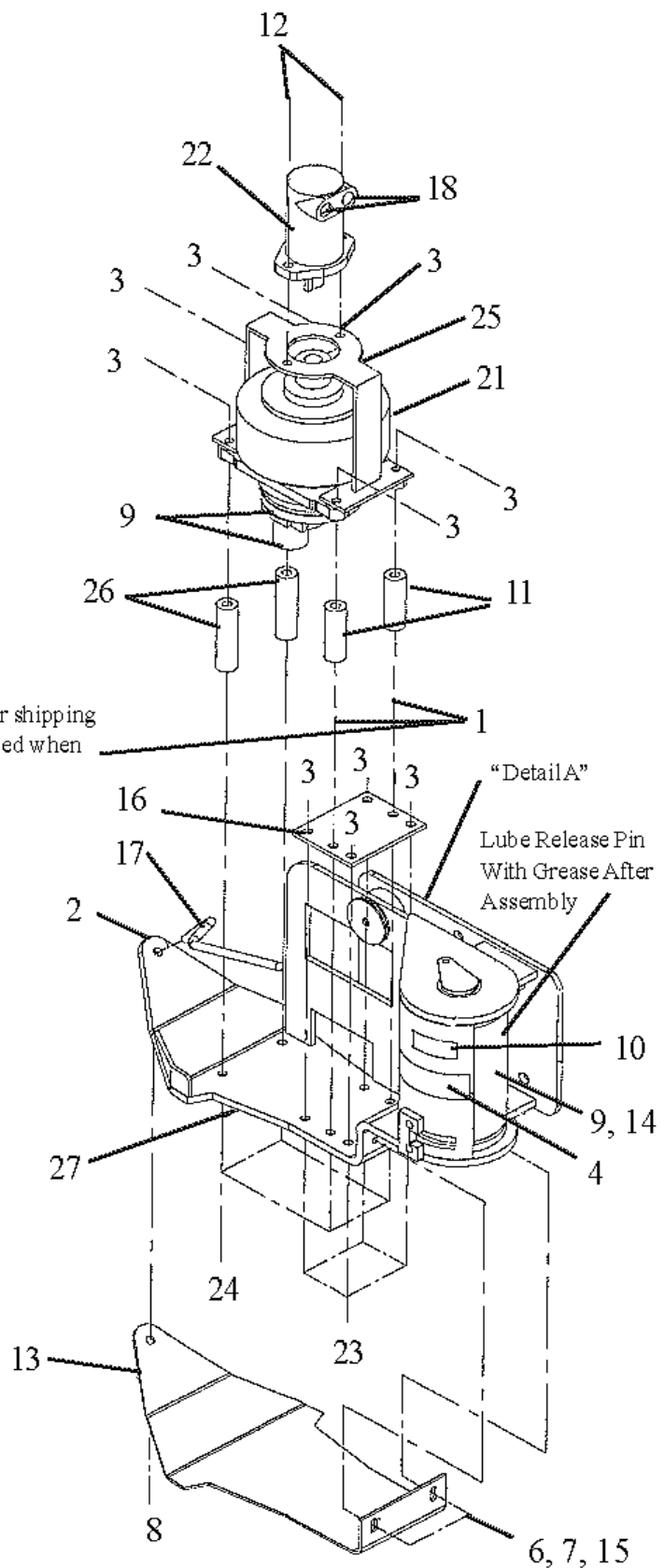
ITEM	PART NO.	QTY.	DESCRIPTION
	<b>02975194</b>	--	<b>SHOE DRIVE &amp; BREAK-A-WAY ASY.</b>
1	00000200	5	NUT
2	00001200	1	NUT
3	00001800	10	LOCKNUT TLM 1/2 NC PLC
5	00002701	2	FLATWASHER
6	00011100	2	FLATWASHER
7	00015800	2	LOCKNUT
8	5C8130	1	NUT
9	000206	3	RED LUBRICAPS
11	02974343	2	SHORT SPACER TUBE
12	00749130	2	BOLT
13	02974344	1	SKID SHOE SOLE
14	00752670	1	GREASE FITTING
15	00753642	2	BOLT
16	02974354	1	CUTTER BAR SPACER
17	02974358	1	ROD DEFLECTOR
18	02042300	2	STRAIGHT ADAPTER
19	02931300	3	BOLY
20	02972570	3	LOCKWASHER
21	02974300	1-AR	HORIZONTAL KNIFE DRIVE ASY (W/ 5/16" KEY WAY) 10-06 & DOWN
	02974300A	1-AR	HORIZONTAL KNIFE DRIVE ASY (W/ 1/4" KEY WAY) 11-06 & UP
22	02974301	1-AR	MOTOR ASY, GEROTOR 2.8 CID (W/ 5/16" KEYWAY) 10-06 & DOWN
	02974301A	1-AR	MOTOR ASY, GEROTOR 2.8 CID (W/ 1/4" KEY WAY) 11-06 & UP
23	02976853	4	PLOW BOLT
24	02976854	4	PLOW BOLT
25	02974313	1	MOTOR ADAPTER BRKT
26	02974342	2	LONG SPACER TUBE
27	02975986	1	SKIDSHOE & BREAKAWAY - PREASY

SWITCHBLADE 5 & 6 FT MECH. BRK-A-WAY - ARCHIVE MAN (08-06)

# Shoe, Drive & Brk-a-way Asy - LH WG - PN 02977727 - (03-01 To Current)



Item # 1 (3/4" nut) are used for shipping purpose only. They are removed when cutter bar is installed

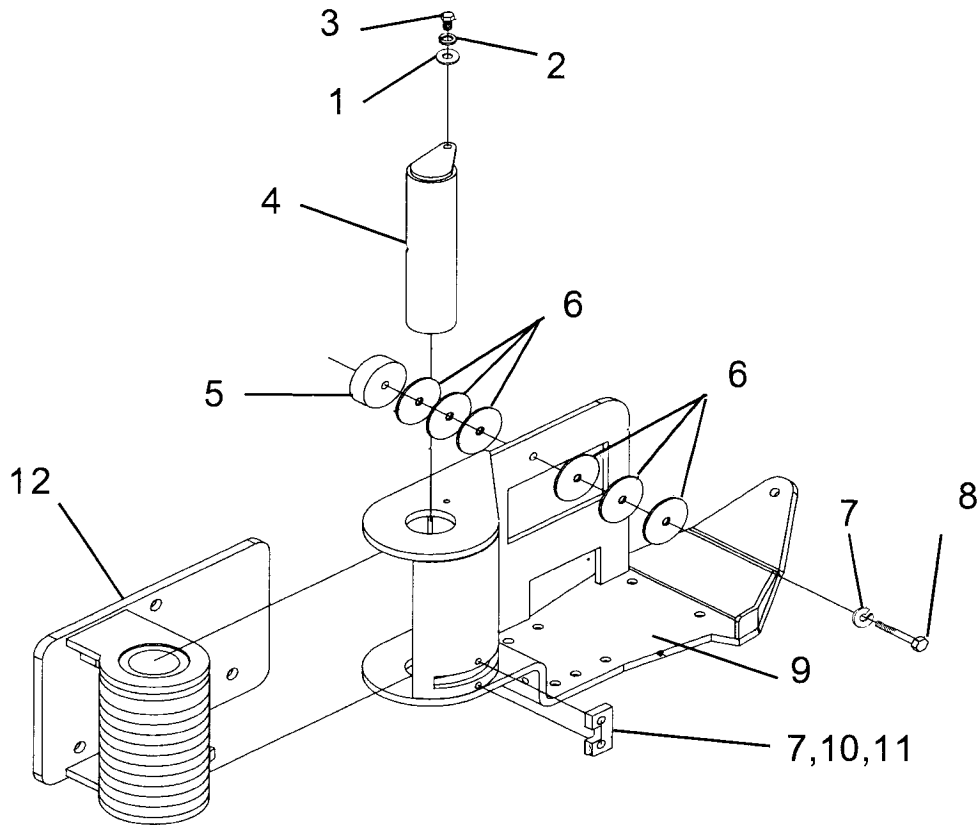


## Shoe, Drive & Brk-a-way Asy - LH WG - PN 02977727 - (03-01 To Current)

ITEM	PART NO.	QTY.	DESCRIPTION
	<b>02977727</b>	--	<b>SHOE DRIVE &amp; BRK-A-WAY ASY. LH MOUNT</b>
1	00000200	5	NUT
2	00001200	1	NUT
3	00001800	10	LOCKNUT TLM 1/2 NC PLC
4	0614600	1	DECAL
5	00002701	2	FLATWASHER
6	00011100	2	FLATWASHER
7	00015800	2	LOCKNUT
8	5C8130	1	NUT 1
9	000206	3	RED LUBRICAPS
10	000678	1	DECAL- GREASE FITTING INSIDE
11	02974343	2	SHORT SPACER TUBE
12	00749130	2	BOLT
13	02974344	1	SKID SHOE SOLE
14	00752670	1	GREASE FITTING
15	00753642	2	BOLT
16	02974354	1	CUTTER BAR SPACER
17	02974358	1	ROD DEFLECTOR
18	02042300	2	STRAIGHT ADAPTER
19	02931300	3	BOLY
20	02972570	3	LOCKWASHER
21	02974300	1-AR	HORIZONTAL KNIFE DRIVE (W/ 5/16" KEY WAY) 10-06 & DOWN
	02974300A	1-AR	HORIZONTAL KNIFE DRIVE (W/ 1/4" KEY WAY) 11-06 & UP
22	02974301	1-AR	MOTOR ASY, GEROTOR 2.8 CID (W/ 5/16" KEY WAY) 10-06 & DOWN
	02974301A	1-AR	MOTOR ASY, GEROTOR 2.8 CID (W/ 1/4" KEY WAY) 11-06 & UP
23	02976853	4	PLOW BOLT
24	02976854	4	PLOW BOLT
25	02974313	1	MOTOR ADAPTER BRKT
26	02974342	2	LONG SPACER TUBE
27	02977726	1	SHOE & BRK-A-WAY PRE-ASY, LH MOUNT

SWITCHBLADE 5 & 6 FT MECH. BRK-A-WAY - ARCHIVE MAN (08-06)

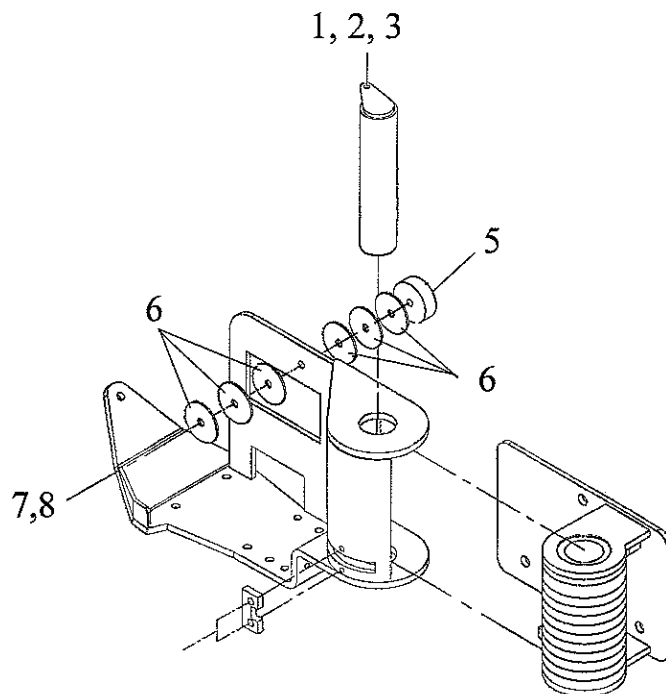
# Shoe & Brk-a-way Pre-Asy - RH WG - PN 02975986 - (03-01 To Current)



ITEM	PART NO.	QTY.	DESCRIPTION
	<b>02975986</b>	<b>---</b>	<b>BREAK-A-WAY PRE-ASY</b>
1	02974339	1	SKID SHOE WLD'MT
2	00011100	1	FLATWASHER
3	03101646	1	LOCKWASHER
4	00002000	1	BOLT
5	03200250	1	RUBBER BUMPER PAD
6	02974363	6	WASHER
7	00019600	3	LOCKWASHER
8	00607900	1	BOLT
9	02975217	1	BAR SPRING STOP
10	02974333	1	BREAK-A-WAY PIVOT WLD'MT
11	0113900	1	RELEASE PIN
12	00750959	2	BOLT ( NOT SHOWN )

NOTE: DANGER ! THIS ITEM IS SPRING LOADED AT THE FACTORY AND IS DISPLACED DIS-ASSEMBLED ONLY TO SHOW COMPONENTS, ALL PARTS LISTED ARE AVAILABLE FOR INDIVIDUAL SALES AS REPLACEMENT PARTS. DO NOT ATTEMPT TO REMOVE ANY BOLTS OR TO REMOVE ANY PARTS FROM THIS ASSEMBLY BEFORE TENSION IS RELEASED ON THE

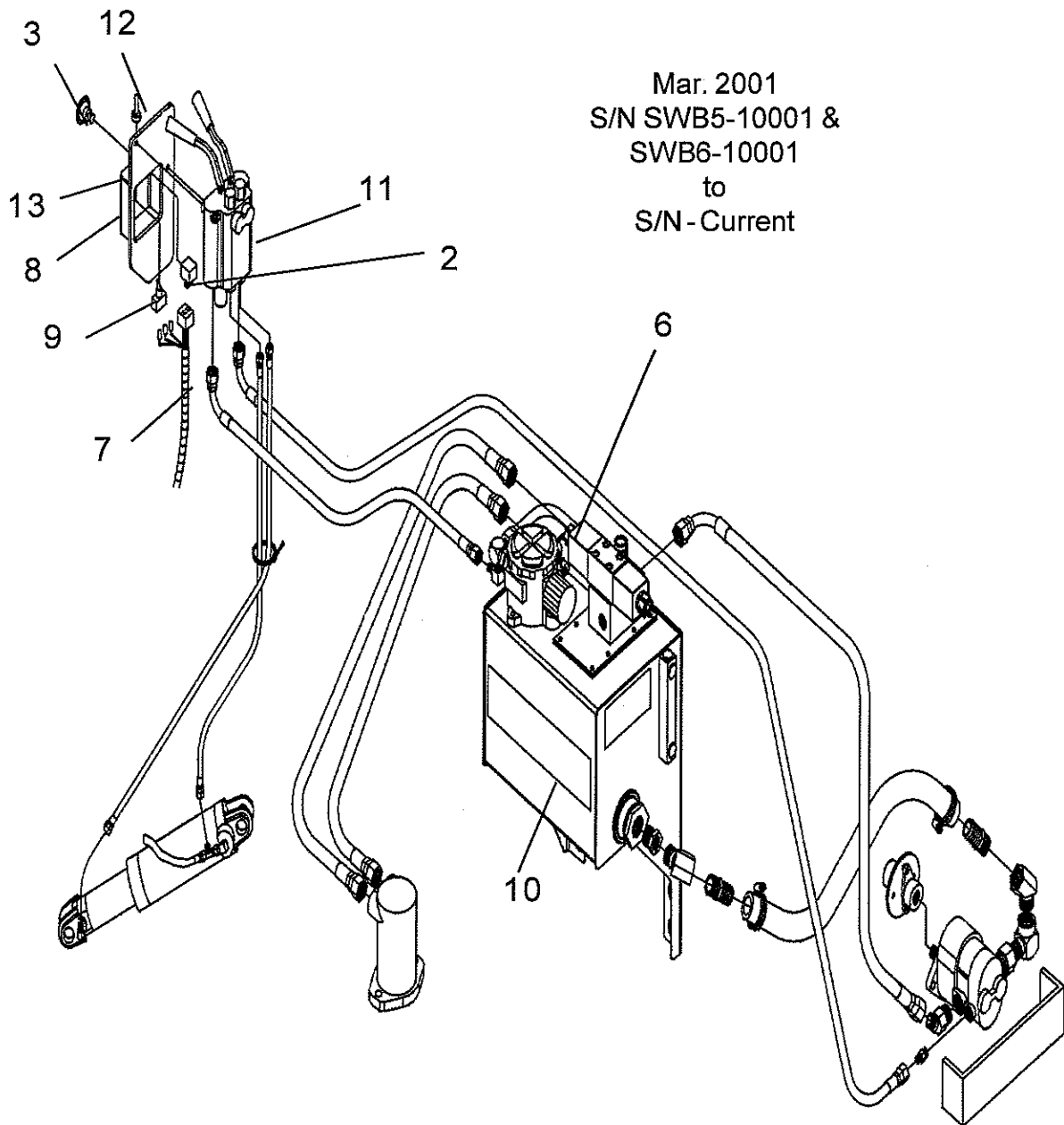
## Shoe & Brk-a-Way Pre-Asy - LH WG - PN 02977726 - (03-01 To Current)



ITEM	PART NO.	QTY.	DESCRIPTION
	<b>02977726</b>	--	<b>SHOE &amp; BRK-A-WAY PRE-ASY LH MOUNT</b>
1	00011100	1	FLATWASHER
2	03101646	1	LOCKWASHER
3	00002000	1	BOLT
5	03200250	1	RUBBER BUMPER PAD
6	02974363	6	WASHER
7	00019600	1	LOCKWASHER
8	00019300	1	BOLT

NOTE: This item is spring loaded at the factory. All other parts not listed are not available for individual sale. DO NOT attempt to remove any part from this assembly other than the shown listed parts.

## COMMON COMPONENT BOX - RH WG - (03-01 TO CURRENT)



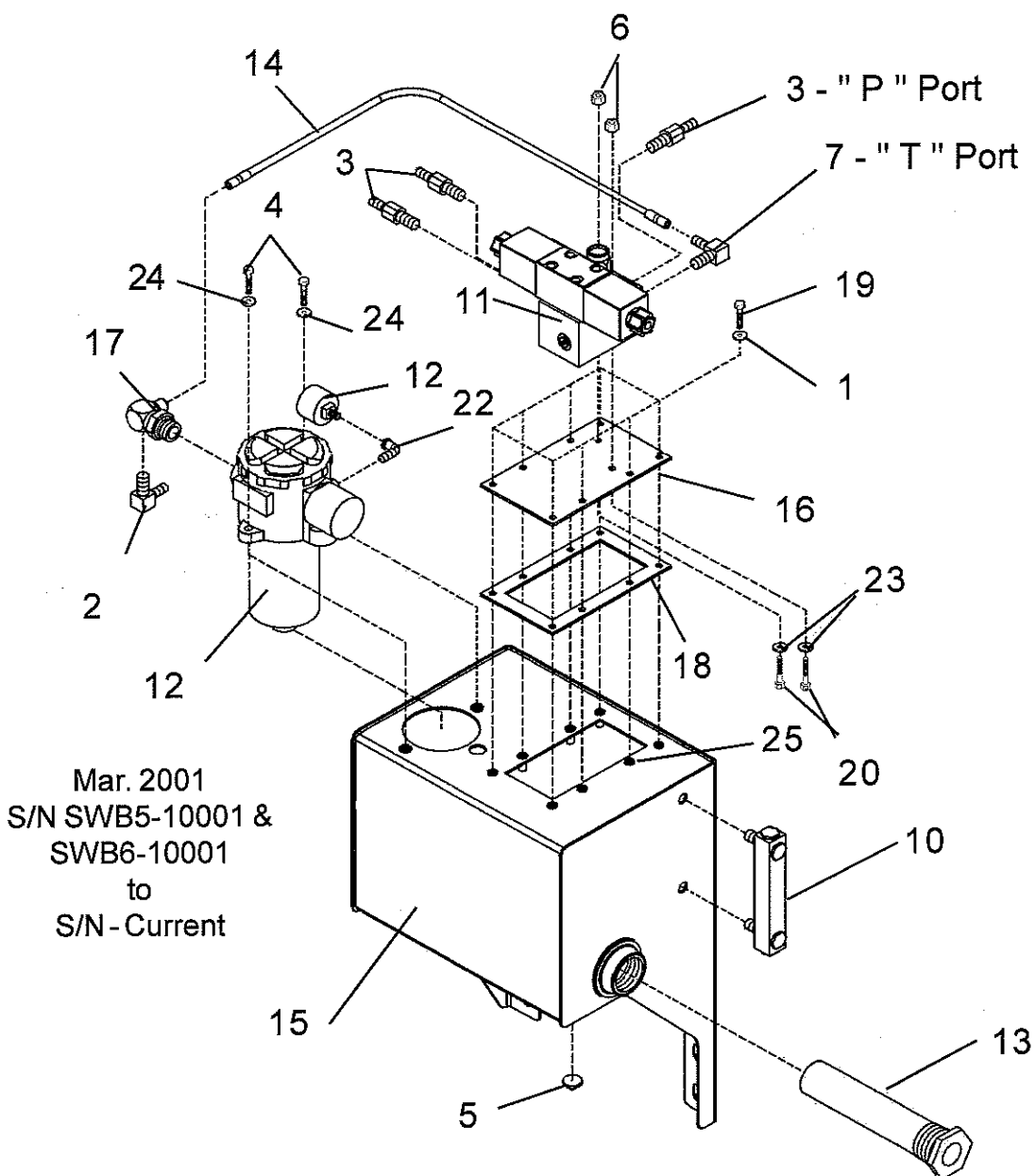
Common Component Box is same for 5 ft or 6 ft model



## COMMON COMPONENT BOX - RH WG - (03-01 TO CURRENT)

ITEM	PART NO.	QTY.	DESCRIPTION
	<b>02974368</b>	--	<b>COMMON COMPONENT BOX</b>
1	00725746	1	DECAL, PELIGRO
2	02964028	1	PUSH PULL SWITCH
3	02964063	1	SWITCH KNOB
4	02965093	1	DECAL, PROPER ENGINE OPERATING
5	02970354	1	DECAL, KNIFE CLEARANCE
6	02974310	1	FILTER ELEMENT
7	02974318	1	WIRE HARNESS
8	02974321	1	DECAL, VALVE & SWITCH OPERATION
9	02974322	1	3 - POSITION TOGGLE SWITCH
10	02974348	1	HYDRAULIC TANK ASY.
11	02974364	1	VALVE ASY.
12	02974962	1	TOGGLE SWITCH BOOT COVER
13	02975270	1	DECAL, REVERSING SWITCH INSTRUCTION
14	0410300	1	DECAL, WARNING SIGN

## HYD TANK ASY - (03-01 TO CURRENT)



Hydraulic Tank Asy is same for 5 ft or 6 ft model

\*Note: Item 10 sight gauge was moved to the other side of oil tank in July 2003 and will not be visible from left side of tank as shown. Sight gauge left on left side in drawing for illustration only.

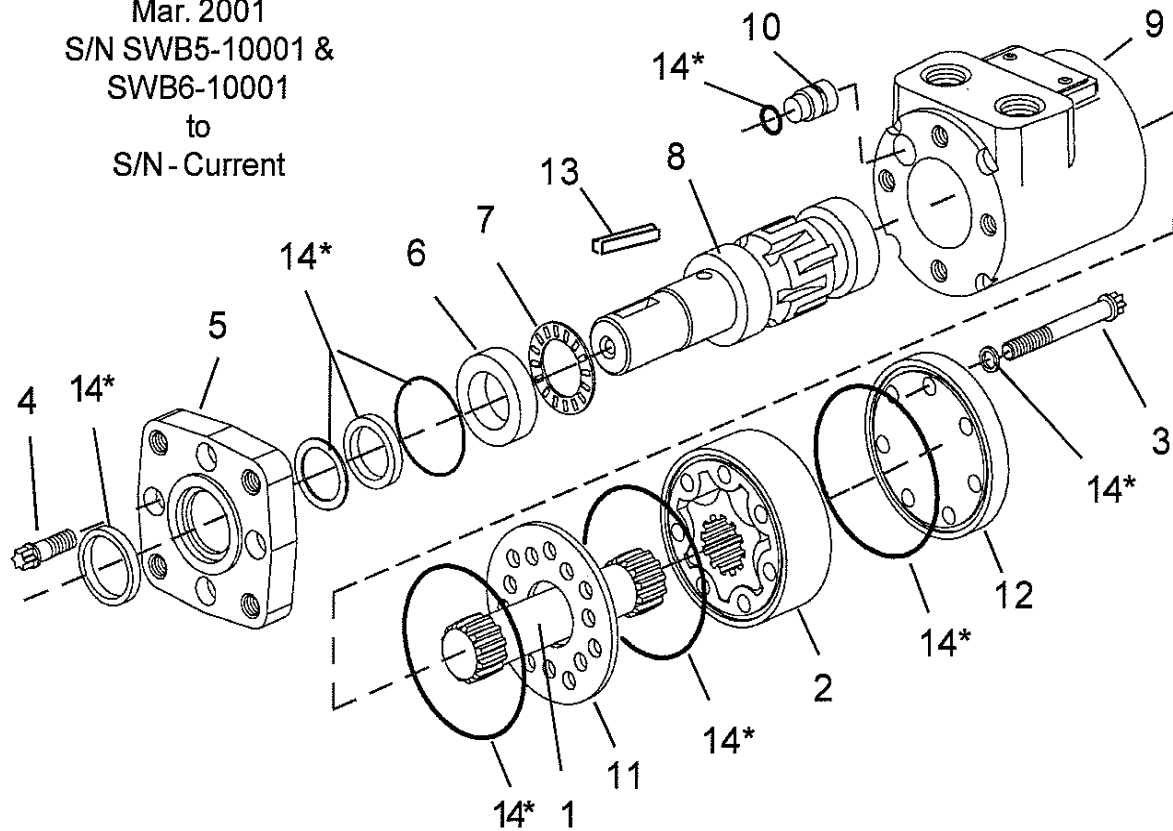
## HYD TANK ASY - (03-01 TO CURRENT)

ITEM	PART NO.	QTY.	DESCRIPTION
	<b>02974348</b>	--	<b>HYDRAULIC TANK ASY.</b>
1	00017000	8	LOCKWASHER
2	001891	1	ELBOW
3	00696800	3	STRAIGHT ADAPTER
4	10121000	2	BOLT
5	0117100	1	MAGNETIC DRAIN PLUG
6	02959924	2	LOCKNUT
7	02962213	1	ELBOW
10	02968880	1	* SIGHT/TEMPERATURE GUAGE
11	02974305	1	VALVE SOLENOID CONTROL
12	02974309	1	FILTER HOUSING ASY.
13	02974312	1	SUCTION STRAINER
14	02974320	1	HOSE
15	02974366	1	HYDRAULIC TANK WLD'MT
16	02974369	1	TANK ACCESS COVER
17	02974370	1	ELBOW
18	064600D	1	COVER GASKET
19	10058000	8	BOLT
20	10074000	2	BOLT
22	000752	1	ELBOW
23	02976123	2	SEAL WASHER
24	00011700	2	LOCKWASHER
25	02976124	8	THREADED INSERT
26	02976125	2	THREADED INSERT

\* NOTE: ITEM # 10 WAS MOVED TO THE OTHER SIDE OF TANK IN JULY 2003 AND WILL NOT BE VISIBLE FROM THE LEFT SIDE OF THE TANK AS SHOWN. THE SIGHT GUAGE ON THE LEFT SIDE IN DRAWING IS FOR ILLUSTRATION ONLY.

HYD MOTOR ASY - (0301 TO CURRENT)	
-----------------------------------	--

Mar. 2001  
S/N SWB5-10001 &  
SWB6-10001  
to  
S/N - Current



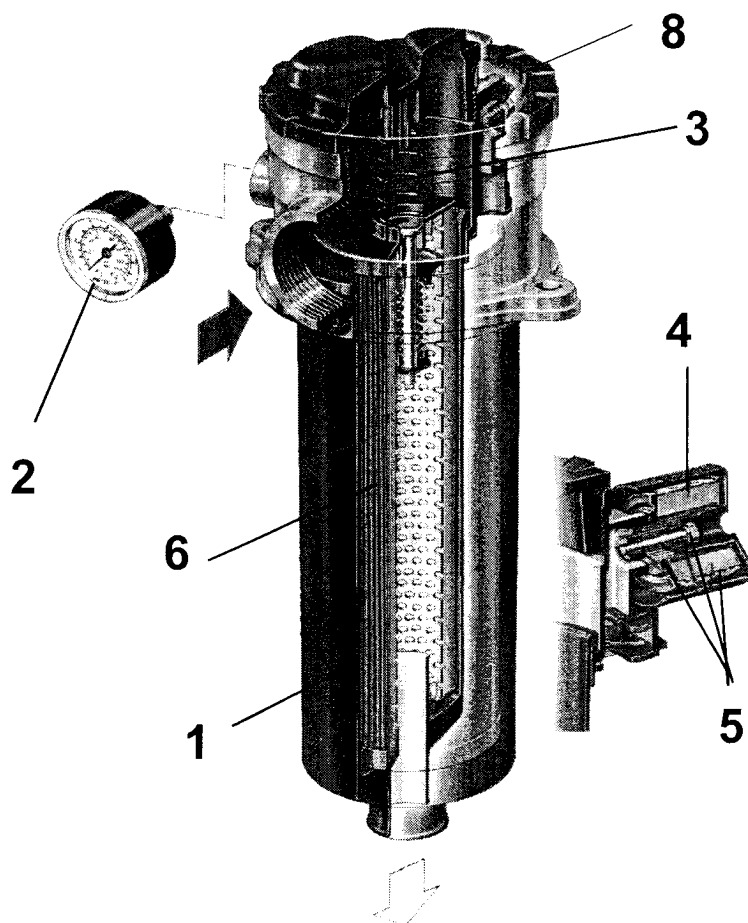
NOTE: Item 14\* are parts that are only available in seal kit.

## HYD MOTOR ASY - (0301 TO CURRENT)

ITEM	PART NO.	QTY.	DESCRIPTION
	<b>02974301</b>	---	<b>MOTOR ASY, GEROTOR 2.8 CID (W/ 5/16" KEY WAY) 10-06 &amp; DOWN</b>
	<b>02974301A</b>	--	<b>MOTOR ASY, GEROTOR 2.8 CID (W/ 1/4" KEY WAY) 11-06 &amp; UP</b>
1	02976883	1	INTERNAL DRIVE SHAFT
2	02976884	1	STAR & HOUSING SET
3	02976885	7	HOUSING TIE SCREW
4	02976886	4	FLANGE ATTACHMENT SCREW
5	02976887	1	FLANGE MOUNT
6	02976888	1	THRUST BEARING RACE
7	02976889	1	THRUST BEARING
8	02976890	1-AR	OUTPUT SHAFT (W/ 5/16" KEY WAY) 10-06 & DOWN
	02976890A	1-AR	OUTPUT SHAFT (W/ 1/4" KEY WAY) 11-06 & UP
9	02976891	1	MOTOR HOUSING
10	02976892	1	PLUG
11	02976893	1	SPACER PLATE
12	02976894	1	END CAP
13	MA000229	1	KEY, 5/16" X 5/16" X 1 " LG (10-06 & DOWN)
	102268	1-AR	KEY, 1/4" X 1/4" X 1" LG (11-06 & UP)
	03200521	1-AR	STEP KEY 1/4" X 5/16" X 1" LG (AS NEEDED)
14	02976895	REF	SEAL KIT, GEROTOR MOTOR

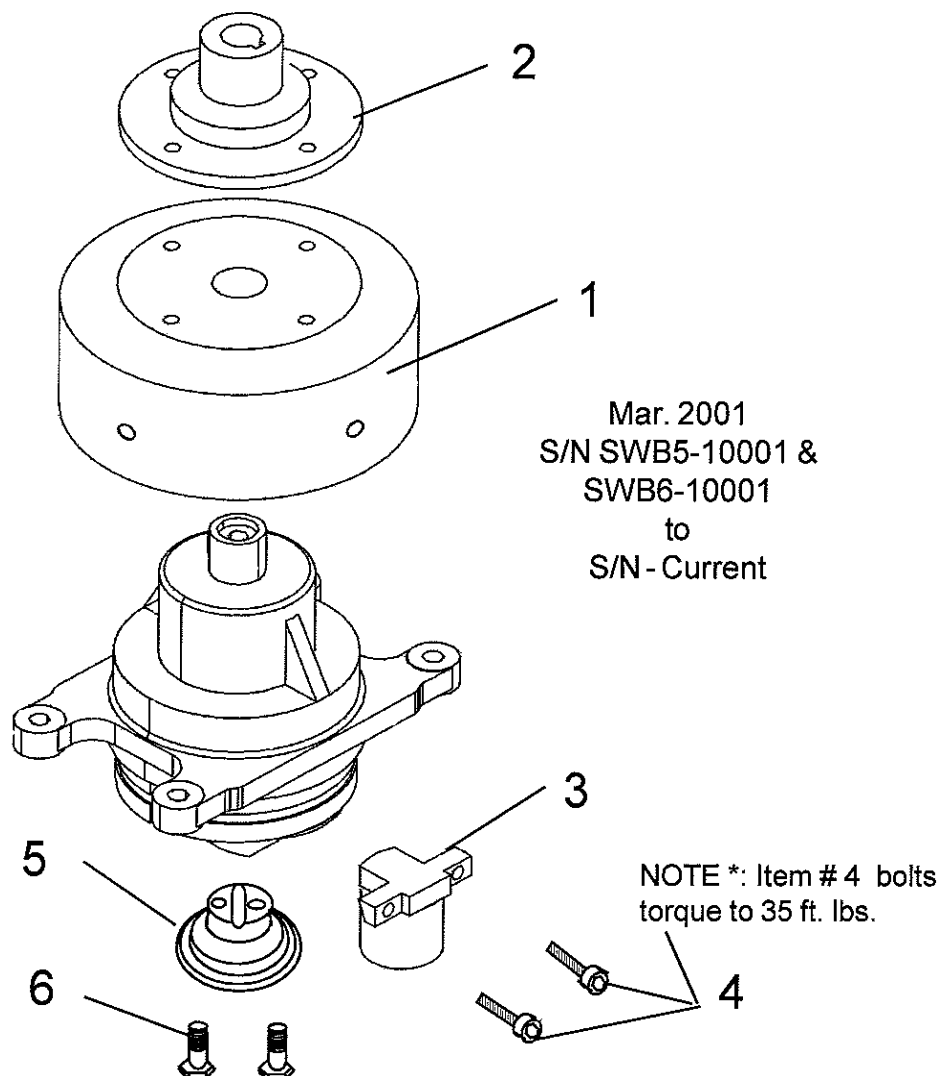
NOTE, There were two different size keys used, a 1/4 inch and a 5/16 inch. to mix these components there is a stepped key available that is 1/4 and 5/16 inch. Check which is needed.

## HYD FILTER ASY - (03-01 TO CURRENT)



ITEM	PART NO.	QTY.	DESCRIPTION
1	02976906	1	BOWL
2	02976907	1	FILTER CONDITION GAUGE
3	02976908	1	FILTER RETAINER SPRING
4	02974319	1	AIR BREATHER ELEMENT
5	02976909	1	AIR BREATHER KIT
6	02974310	1	FILTER ELEMENT
7	02976910	1	SEAL KIT

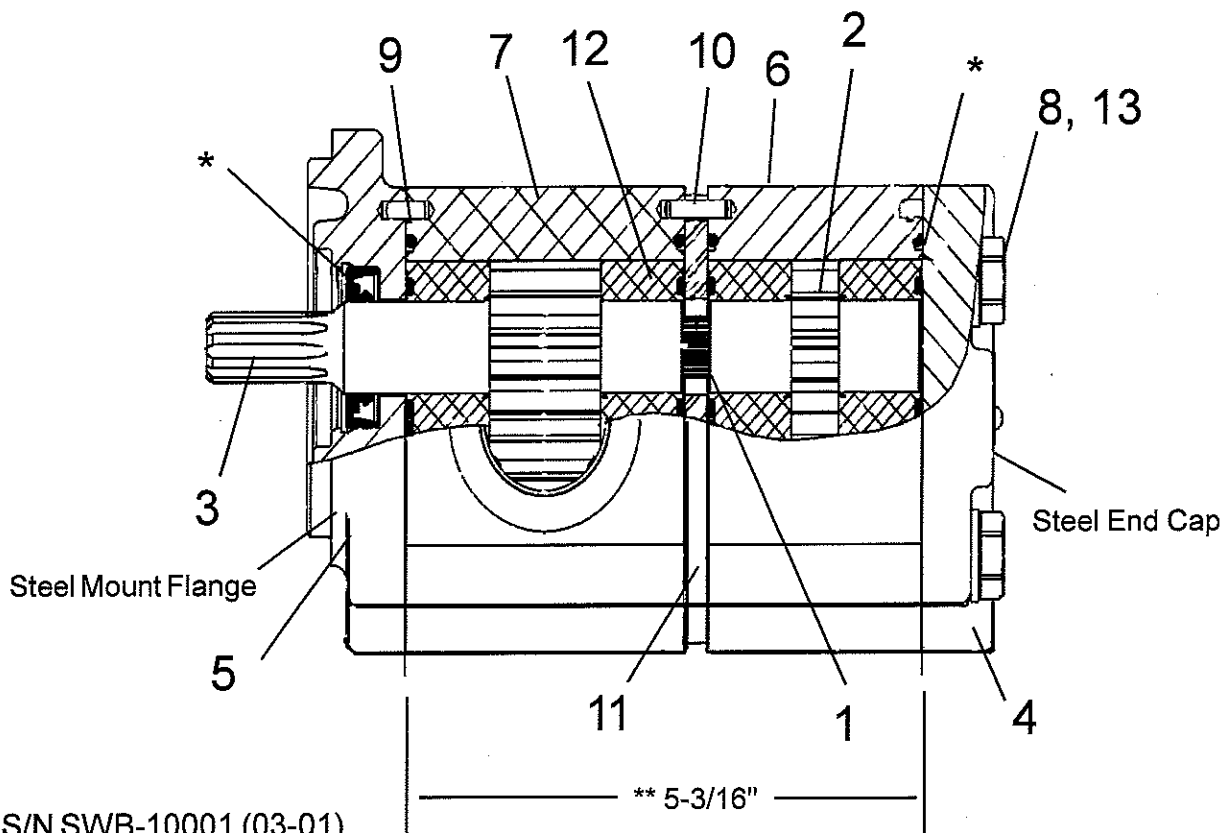
# HYD MOTOR KNIFE DRIVE ASY - (03-01 TO CURRENT)



ITEM	PART NO.	QTY.	DESCRIPTION
	<b>02974300</b>	---	<b>HORIZONTAL KNIFE DRIVE ASY (W/ 5/16" KEY WAY) 10-06 &amp; DOWN</b>
	<b>02974300A</b>	--	<b>HORIZONTAL KNIFE DRIVE ASY (W/ 1/4" KEY WAY) 11-06 &amp; UP</b>
1	02974311	1	FLYWHEEL
2	02974315	1-AR	ADAPTER HUB (W/ 5/16" KEY WAY) 10-06 & DOWN
	02974315A	1-AR	ADAPTER HUB (W/ 1/4" KEY WAY) 11-06 & UP
3	02974317	1	KNIFE DRIVE STUD ASY.
4	02977820	2	* SOCKET HEAD BOLT
5	02980453	1	KNIFE DRIVE SUPPORT
6	02967570	2	BOLT

NOTE: \* ITEM # 4, TORQUE TO 35 FT.LBS.

# HYD PUMP ASY - 1.16 / 0.49 CU IN / REV - (03-01 TO 09-04)



S/N SWB-10001 (03-01)  
to  
S/N SWB-10361 (09-04)

Dimension For Assembly Identification

**NOTE \*\*:** Always Measure Length of Gear Housings (item #6 & #7 when pump is assembled) which is length of both plus Spacer Plate (item #11) before ordering Pump Parts, This is because there are 2 pumps with different displacement, which pump depends on which model tractor is being used. Above Pump is used on the 5 ft & 6 ft model. The above pump assembly will have an steel end cap and mounting flange, later pump used was aluminum. The parts from later pump will not fit this pump. later pump will replace the above pump as a complete assembly.

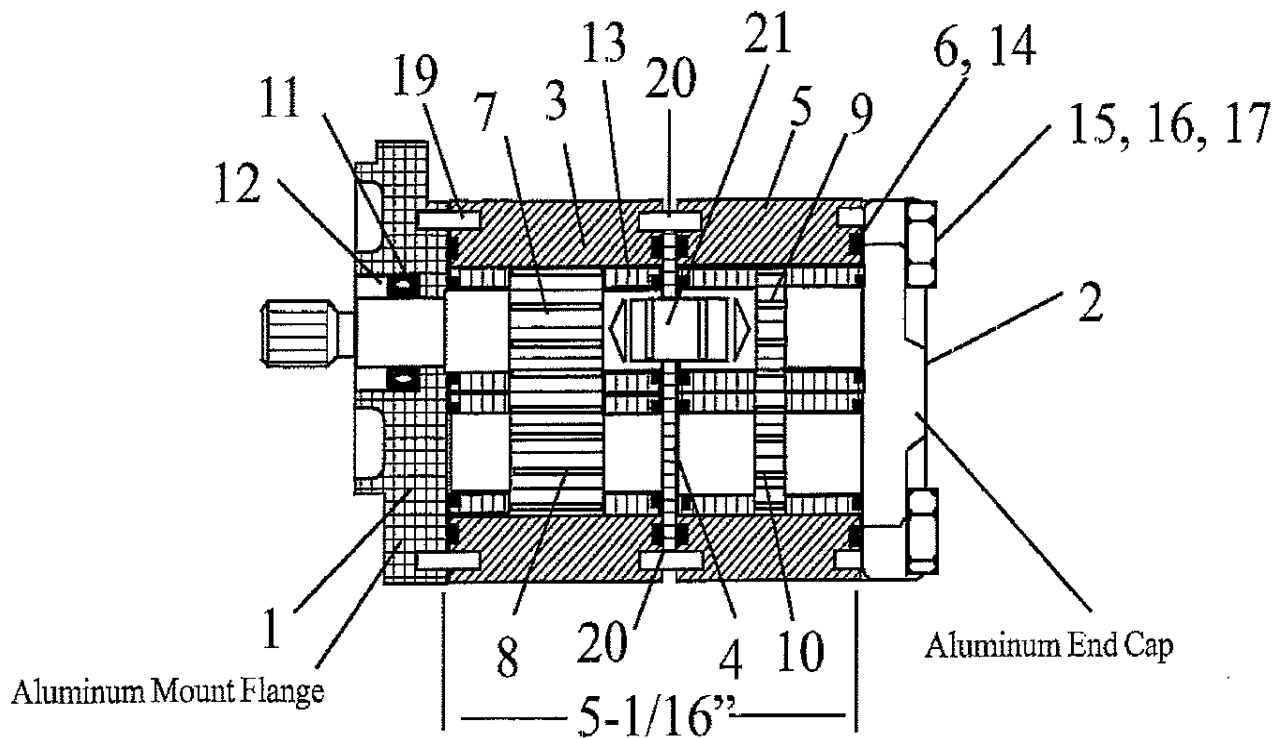


## HYD PUMP ASY - 1.16 / 0.49 CU IN / REV - (03-01 TO 09-04)

ITEM	PART NO.	QTY.	DESCRIPTION
	<b>02974302</b>	--	<b>PUMP ASY, 1.16 / 0.49 CU IN / REV</b>
1	02976923	1	CONNECTING SHAFT
2	02976922	1	GEAR SET
3	02976921	1	GEAR SET
4	02976920	1	END CAP
5	02976919	1	MOUNTING FLANGE
6	02976918	1	GEAR HOUSING
7	02976917	1	GEAR HOUSING
8	02976916	4	HOUSING TIE BOLT
9	02976915	2	DOWEL PIN
10	02976914	2	DOWEL PIN
11	02976913	1	MID SPACER PLATE
12	02976912	4	THRUST BLOCK
13	02976911	4	FLAT WASHER
*	02976924	REF	SEAL KIT ( INCLUDES ITEMS W / * )

NOTE : \* ALWAYS MEASURE LENGTH OF GEAR HOUSINGS ( ITEMS # 6 & # 7 ) WHICH IS THE LENGTH OF BOTH PLUS SPACER PLATE ( ITEM # 11 ) BEFORE ORDERING PUMP PARTS, THIS IS BECAUSE THERE ARE 2 PUMPS WITH DIFFERENT DISPLACEMENT, WHICH PUMP DEPENDS ON WHICH MODEL TRACTOR IS BEING USED.

# HYD PUMP ASY - 1.16 / 0.49 CU IN / REV - (10-04 TO Current)



S/N SWB-10361 (10-04)  
to  
S/N SWB-(Current)

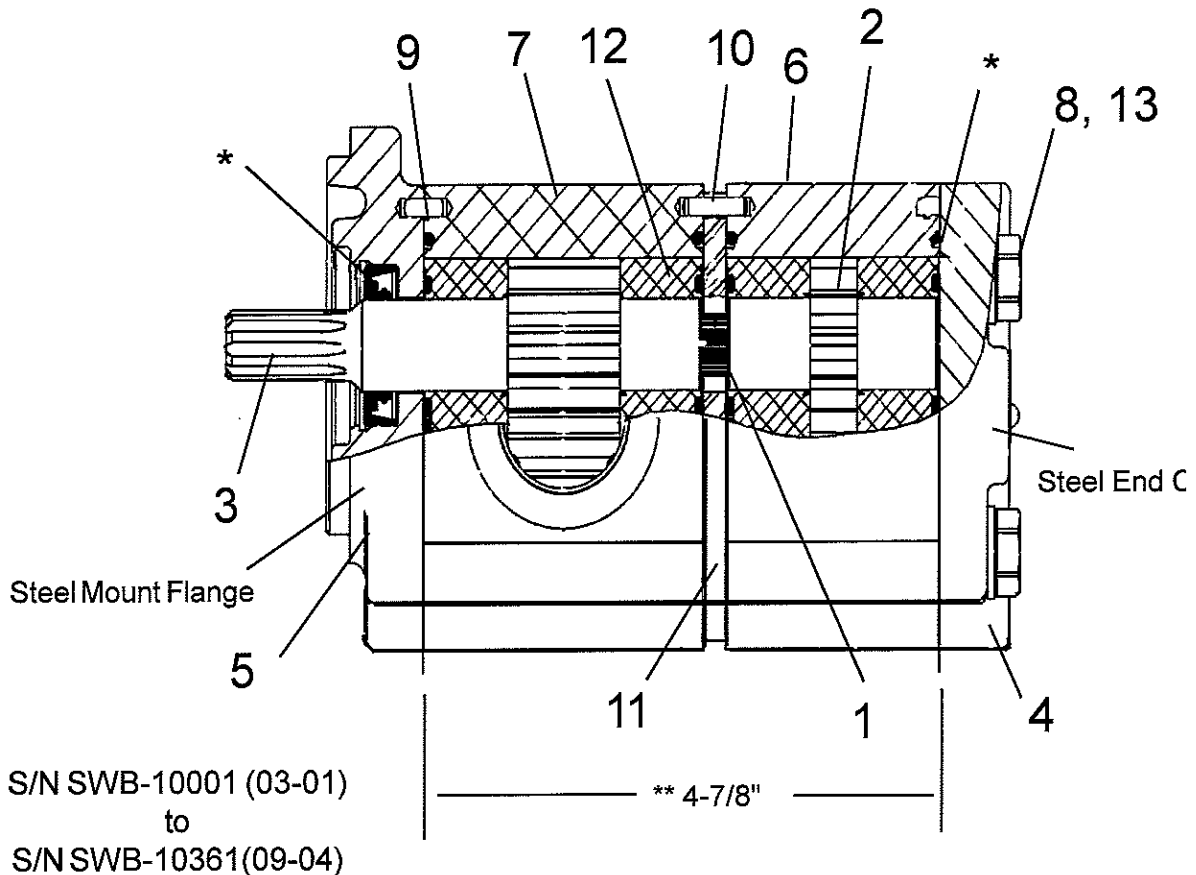
Dimension For Assembly Identification

**NOTE \*\*:** Always Measure Length of Gear Housings (item #6 & #7 when pump is assembled) which is length of both plus Spacer Plate (item #4) before ordering Pump Parts, This is because there are 2 pumps with different displacement, which pump depends on which model tractor is being used. Above Pump is used on the 5 ft & 6 ft model. The above pump assembly will have an aluminum end cap and mounting flange, previous pump used was steel. The parts from earlier pump will not fit this pump. This pump will replace the earlier pump as a complete assembly.

# HYD PUMP ASY - 1.16 / 0.49 CU IN / REV - (10-04 TO Current)

ITEM	PART NO.	QTY.	DESCRIPTION
	<b>02974302A</b>	--	<b>PUMP ASY, 1.16/0.49 CID/REV (ALUMINUM MOUNTING FLANGE &amp; END CAP)</b>
1	02980846	1	MOUNTING FLANGE, (ALUMINUM MOUNTING FLANGE)
2	02980847	1	END CAP, (ALUMINUM END CAP)
3	02980848	1	HOUSING, (F/ LARGE GEAR SECTION)
4	02976913	1	MID SECTION SPACER PLATE
5	02980849	1	HOUSING, (F/ SMALL GEAR SECTION)
6	-----	4	SEAL, BACK UP (INCLUDED N SEAL KIT)
7	02980850	1	DRIVE GEAR, (LARGE GEAR)
8	02980851	1	DRIVEN GEAR, (LARGE GEAR)
9	02980852	1	DRIVE GEAR, (SMALL GEAR)
10	02980853	1	DRIVEN GEAR, (SMALL GEAR)
11	-----	1	SHAFT SEAL, (INCLUDED IN SEAL KIT)
12	02980856	1	SNAP RING
13	02980857	4	THRUST BLOCK, (F/ LARGE OR SMALL GEAR SECTION)
14	-----	4	CHANNEL SEAL, (INCLUDED IN SEAL KIT)
15	02976911	4	WASHER
16	02980854	4	FASTENER, (173MM)
17	02980855	4	NUT
18	-----	4	SECTIONAL SEAL, (INCLUDED IN SEAL KIT)
19	02976915	2	PIN, DOWEL, (SHORT PIN)
20	02976914	2	PIN, DOWEL, (LONG PIN)
21	02976923	1	CONNECTING, SHAFT
22	02980858	1	SEAL KIT, (F/ LARGE GEAR SECTION)
23	02980859	1	SEAL KIT, (F/ SMALL GEAR SECTION)

# HYD PUMP ASY - 0.98 / 0.37 CU IN / REV - (03-01 TO 09-04)



Dimension For Assembly Identification

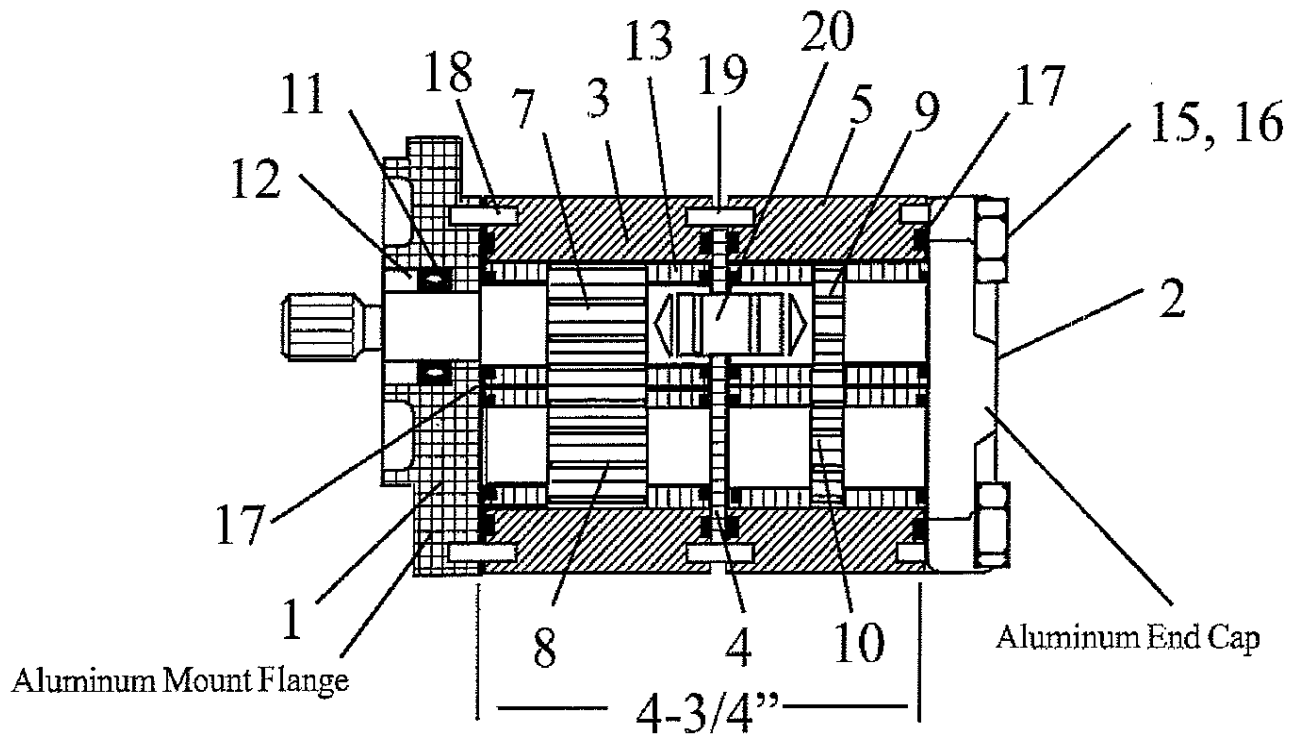
**NOTE \*\*:** Always Measure Length of Gear Housings (item #6 & #7) which is length of both plus Spacer Plate (item # 11) before ordering Pump Parts, This is because there are 2 pumps with different displacement, which pump depends on which model tractor is being used. There is a special Pump # 02976844 which is the same as above pump but it is assembled different to turn CW instead of the standard CCW as # 02974303 does. See Instruction Sheet # 02976962 on the assembly of special pump. Also this special Pump is rare as it was only used on one model (John Deere 4500, 4600, 4700) Tractor. Above Pump is used on the 5 ft & 6 ft model. The above pump assembly will have a steel end cap and mounting flange, later pump used aluminum. The parts from later pump will not fit this pump. later pump will replace the above pump as a complete assembly.

## HYD PUMP ASY - 0.98 / 0.37 CU IN / REV - (03-01 TO 09-04)

ITEM	PART NO.	QTY.	DESCRIPTION
	<b>02974303</b>	--	<b>PUMP ASY, 0.98/0.37 CID/REV</b>
1	02976923	1	CONNECTING SHAFT
2	02976929	1	GEAR SET
3	02976928	1	GEAR SET
4	02976920	1	END CAP
5	02976919	1	MOUNTING FLANGE
6	02976927	1	GEAR HOUSING
7	02976926	1	GEAR HOUSING
8	02976925	4	HOUSING TIE BOLT
9	02976915	2	DOWEL PIN
10	02976914	2	DOWEL PIN
11	02976913	1	MID SPACER PLATE
12	02976912	4	THRUST BLOCK
13	02976911	4	WASHER
*	02976924	REF	SEAL KIT ( INCLUDES ITEMS W / * )

NOTE : \* ALWAYS MEASURE LENGTH OF GEAR HOUSINGS ( ITEM # 6 & # 7 ) WHICH IS THE LENGTH OF BOTH PLUS SPACER PLATE ( ITEM # 11 ) BEFORE ORDERING PUMP PARTS, THIS IS BECAUSE THERE ARE 2 PUMPS WITH DIFFERENT DISPLACEMENT, WHICH PUMP DEPENDS ON WHICH TRACTOR IS BEING USED. THERE IS A SPECIAL PUMP # 02

# HYD PUMP ASY - 0.98 / 0.37 CU IN / REV - (10-04 TO Current)



S/N SWB-10362 (10-04)  
to  
S/N SWB-(Current)

Dimension For Assembly Identification

**NOTE \*\*:** Always Measure Length of Gear Housings (item #6 & #7) which is length of both plus Spacer Plate (item # 4) before ordering Pump Parts, This is because there are 2 pumps with different displacement, which pump depends on which model tractor is being used. The above pump assembly will have an aluminum end cap and mounting flange, previous pump used was steel. The parts from earlier pump will not fit this pump. This pump will replace the earlier pump as a complete assembly.

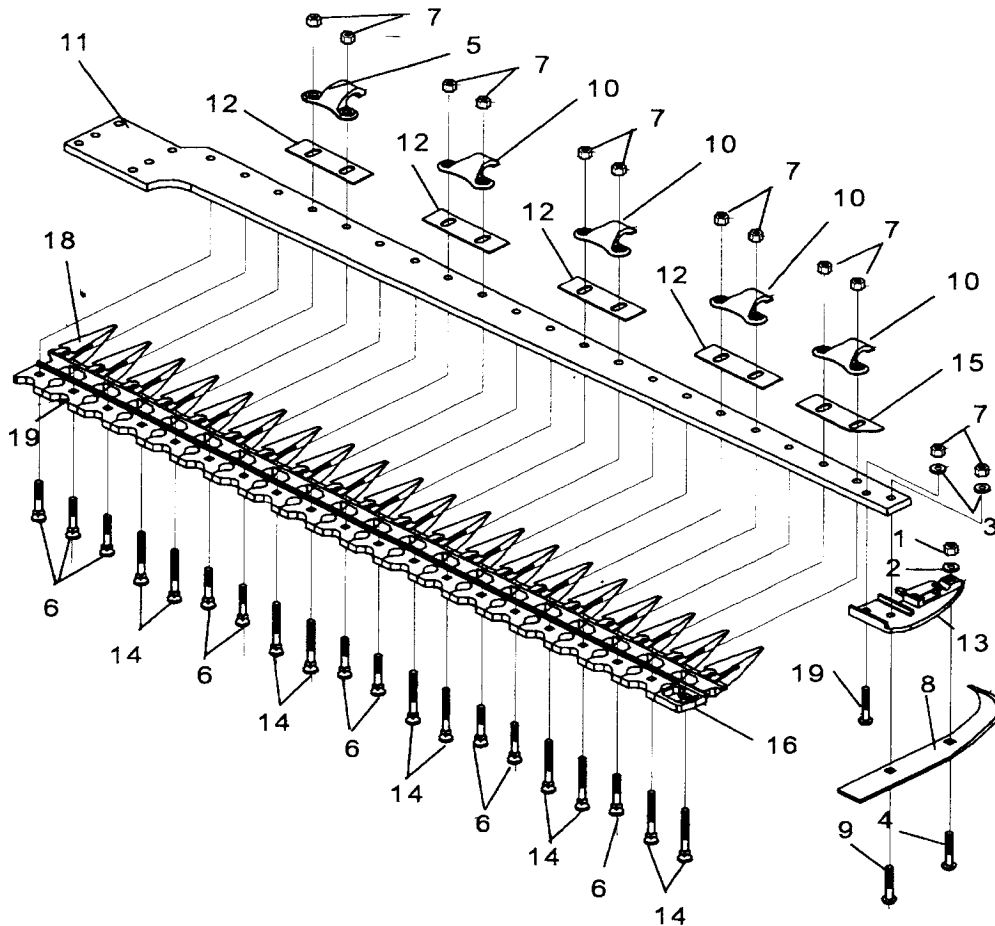
# HYD PUMP ASY - 0.98 / 0.37 CU IN / REV - (10-04 TO Current)

ITEM	PART NO.	QTY.	DESCRIPTION
	<b>02974303A</b>	--	<b>PUMP ASY, 0.98/0.37 CID/REV (ALUMINUM MOUNTING FLANGE &amp; END CAP)</b>
1	02976911	4	WASHER
2	02976913	1	MID SPACER PLATE
3	02976914	2	PIN, DOWEL
4	02976915	2	PIN, DOWEL
5	02976923	1	CONNECTING, SHAFT
6	02980846	1	MOUNTING FLANGE (ALUMINUM MOUNTING FLANGE)
7	02980847	1	END CAP ( ALUMINUM END CAP )
8	02980860	1	GEAR HOUSING, ( F/ LARGE GEAR SET )
9	02980861	1	GEAR HOUSING, ( F/ SMALL GEAR SET )
10	02980862	1	DRIVE GEAR & INPUT SHAFT ( F/ LARGE GEAR )
11	02980863	1	DRIVEN GEAR ( F/ LARGE GEAR )
12	02980864	1	DRIVE GEAR ( F/ SMALL GEAR )
13	02980865	1	DRIVEN GEAR ( F/ SMALL GEAR )
14	02980866	4	HOUSING TIE BOLT - 150 MM
15	02980856	1	SNAP RING
16	02980857	4	THRUST BLOCK, (F/ LARGE OR SMALL GEAR SECTION)
17	-----	1	INPUT SEAL, (INCLUDED IN SEAL KIT)
18	02980858	1	SEAL KIT, (F/ LARGE GEAR SECTION)
19	02980859	1	SEAL KIT, (F/ SMALL GEAR SECTION)

NOTE: Seal Kit Item 18 includes input seal (1), backup seals (2), channel seals (2) and section seal o-rings (2)or first pump section.

NOTE: Seal Kit Item 19 includes backup seals (2), channel seals (2) and section seal o-rings (2)or second pump section.

# CUTTER BAR ASY - 5 FT RH WG - PN 02974360 - (03-01 TO CURRENT)

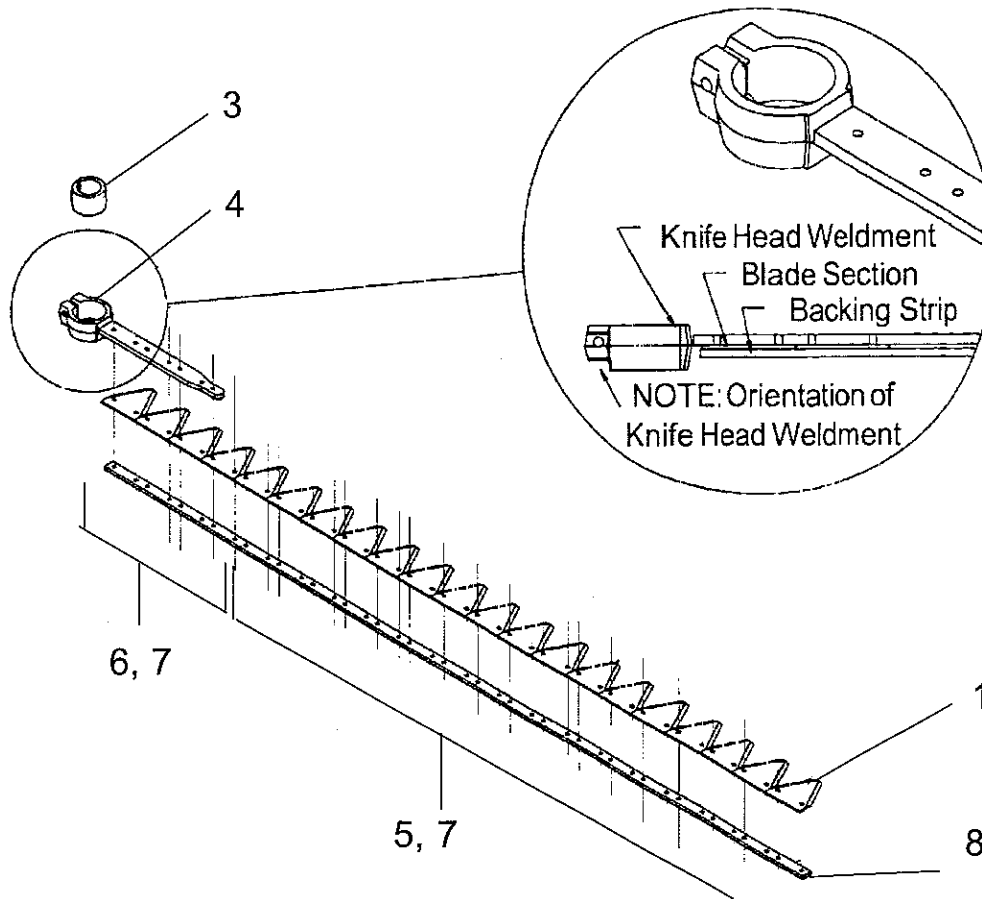


ITEM	PART NO.	QTY.	DESCRIPTION
	<b>02974360</b>	--	<b>5' SICKLE BAR ASY.</b>
1	00001200	1	NUT
2	00019600	1	LOCKWASHER
3	00022200	2	LOCKWASHER
4	000516	1	CARRIAGE BOLT
5	02983841	1	LOW ARCH HOLD DOWN CLIP
6	0046400	10	PLOW BOLT
7	00999316	22	NUT
8	0123800	1	OUTER SHOE SOLE
9	0129000	1	CARRIAGE BOLT
10	02983841	4	LOW ARCH HOLD DOWN CLIP
11	02974345	1	BAR CUTTER 5'
12	0532600	4	WEAR PLATE
13	0570900	1	OUTER SHOE ASY.
14	0571800	10	PLOW BOLT
15	0571900	1	WEAR PLATE
16	0593600	1	OUTER ROCK GUARD
17	0593700	18	CENTER ROCK GUARD
18	0593800	1	INNER ROCK GUARD, RH
19	12666000	1	CARRIAGE BOLT

SWITCHBLADE 5 & 6 FT MECH. BRK-A-WAY - ARCHIVE MAN (08-06)

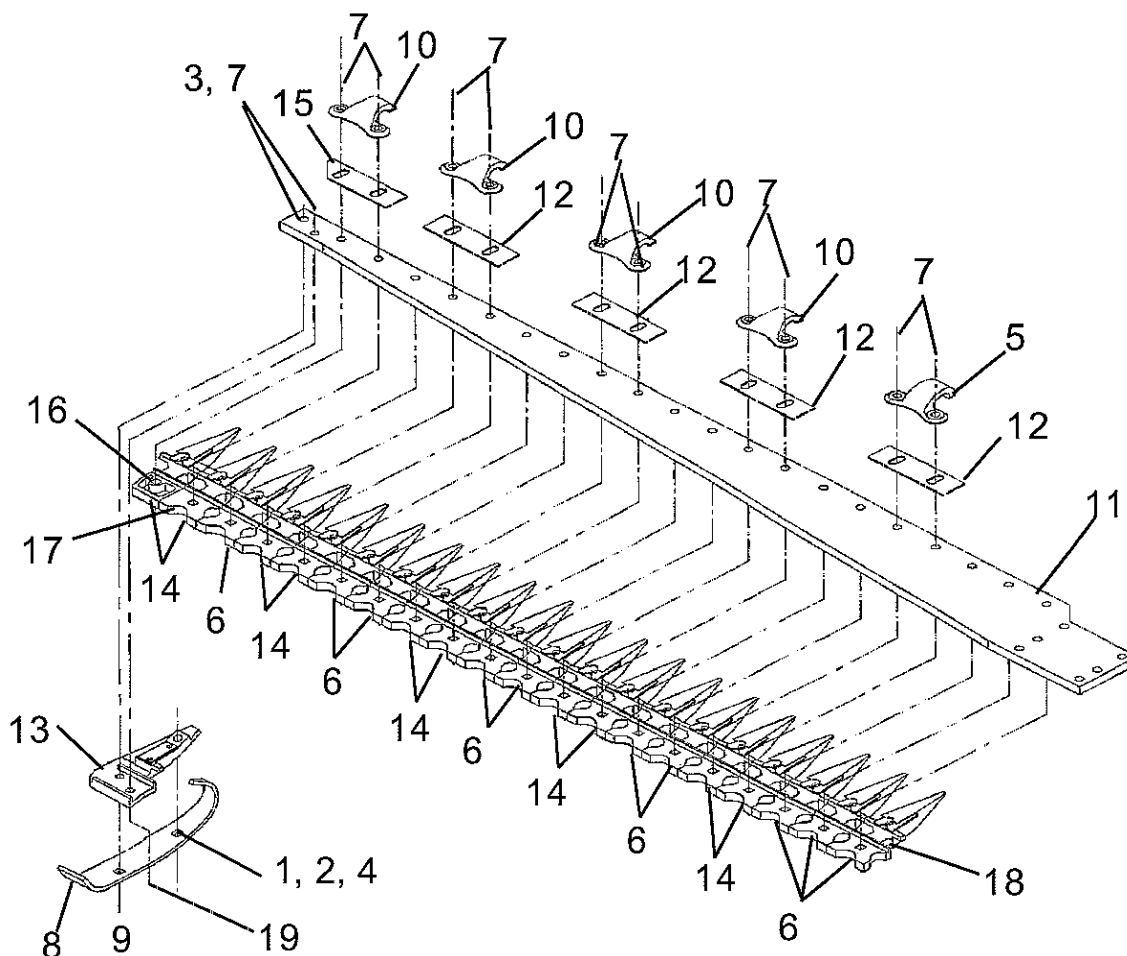


# Knife Bar - 5 ft RH WG - PN 02974361 - w/ Serrated Knives - (03-01 To Current)



ITEM	PART NO.	QTY.	DESCRIPTION
	02974361	--	5' CUTTER BAR, ASY, SERRATED KNIFE
1	0064600	21	KNIFE SECTION 3"
2	0189900	1	KNIFE PROTECTOR,CARDBOARD 63"
3	02974316	1	INSERT NYLON DRIVE BRG CLAMP
4	02974349	1	KNIFE HEAD WLD'MT
	00756328	1	BOLT
5	02976270	35	SECTION BOLT
6	02976271	7	HEAD BOLT
7	02976272	42	LOCKNUT
8	0530100M	1	BACKING STRIP 5'

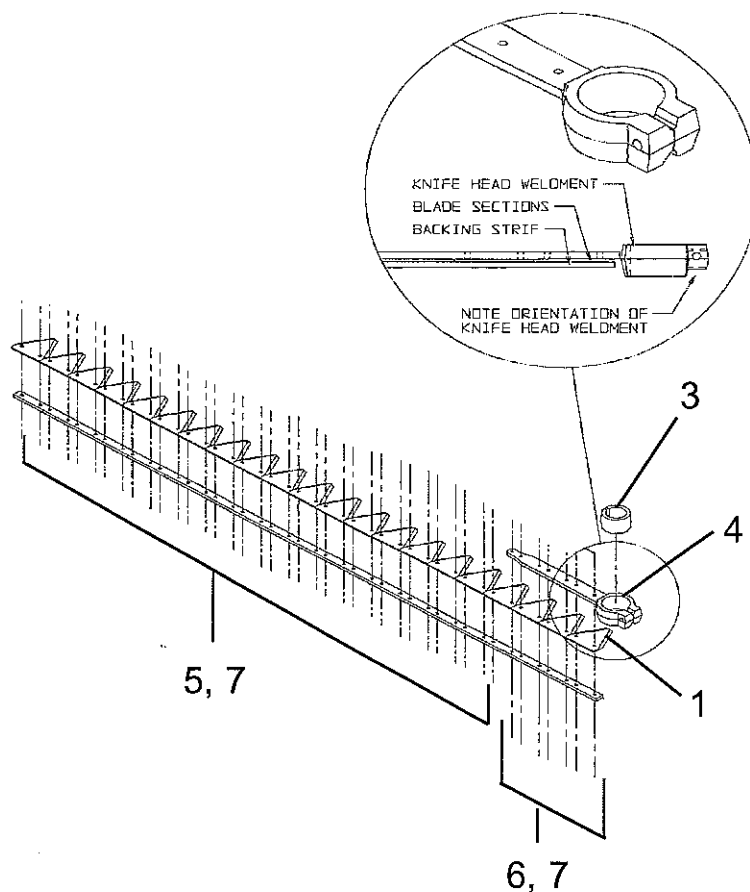
# **CUTTER BAR ASY - 5 FT LH WG - PN 02977715 - (03-01 TO CURRENT)**



ITEM	PART NO.	QTY.	DESCRIPTION
	<b>02977715</b>	--	<b>5' CUTTER BAR ASY. LH WING</b>
1	00001200	1	NUT
2	00019600	1	LOCKWASHER
3	00022200	2	LOCKWASHER
4	000516	1	CARRIAGE BOLT
5	02983841	1	LOW ARCH HOLD DOWN CLIP
6	0046400	10	PLOW BOLT
7	00999316	22	NUT
8	0569500	1	OUTER SHOE SOLE, LH
9	0129000	1	CARRIAGE BOLT
10	02983841	4	LOW ARCH HOLD DOWN CLIP
11	02974345	1	CUTTER BAR, 5'
12	0532600	4	WEAR PLATE
13	0571100	1	OUTER SHOE ASSEMBLY
14	0571800	10	PLOW BOLT
15	0571900	1	WEAR PLATE
16	0593500	1	OUTER ROCK GUARD
17	0593700	18	CENTER ROCK GUARD
18	0596200	1	INNER ROCK GUARD, LH
19	12666000	1	CARRIAGE BOLT

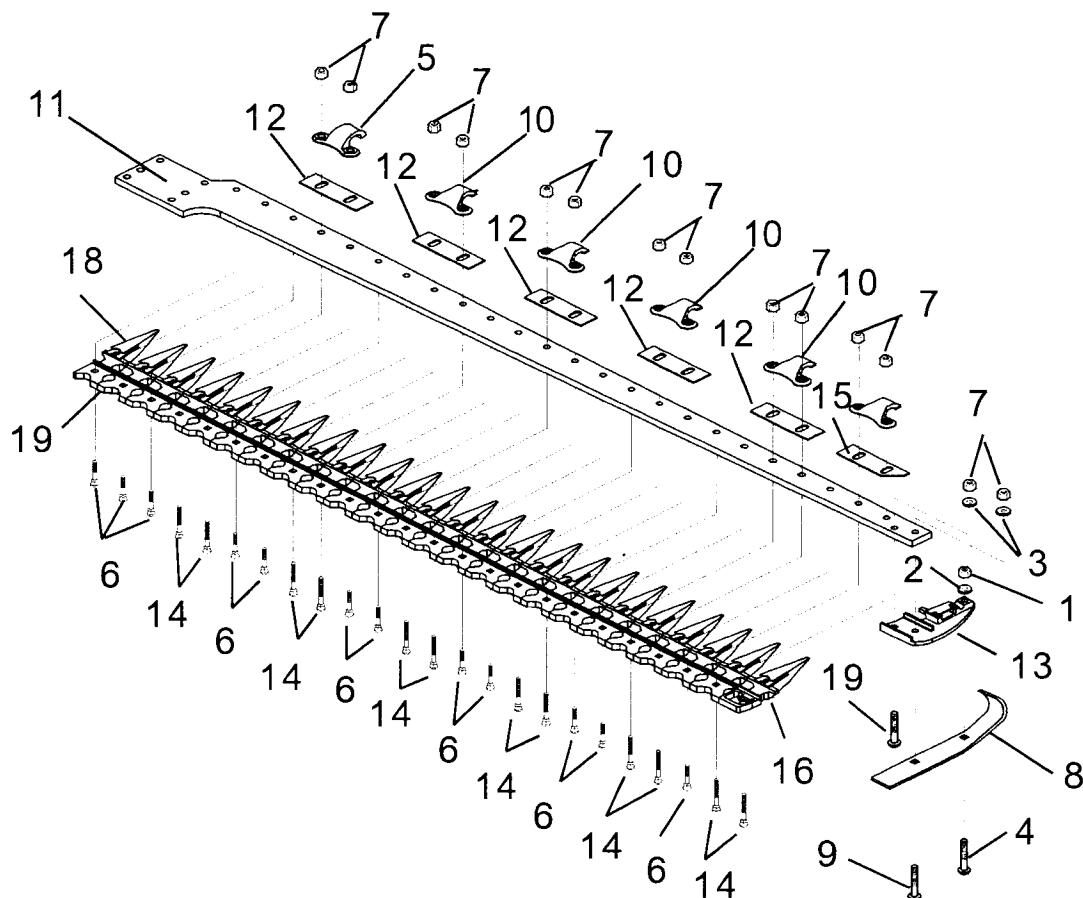
SWITCHBLADE 5 & 6 FT MECH. BRK-A-WAY - ARCHIVE MAN (08-06)

# **Knife Bar - 5 ft LH WG - PN 02977716 - w/ Serrated Knives - (03-01 To Current)**



ITEM	PART NO.	QTY.	DESCRIPTION
	<b>02977716</b>	--	<b>5' KNIFE BAR ASY, LH WING</b>
1	0064600	21	SERRATED KNIFE SECTION, 3"
2	0189900	1	KNIFE PROTECTOR, CARDBOARD 63"
3	02974316	1	INSERT NYLON DRIVE BRG CLAMP
4	02974349	1	KNIFE HEAD WLD'MT
	00756328	1	BOLT
5	02976270	35	SECTION BOLT
6	02976271	7	HEAD BOLT
7	02976272	42	LOCKNUT
8	0530100M	1	BACKING STRIP, 5'

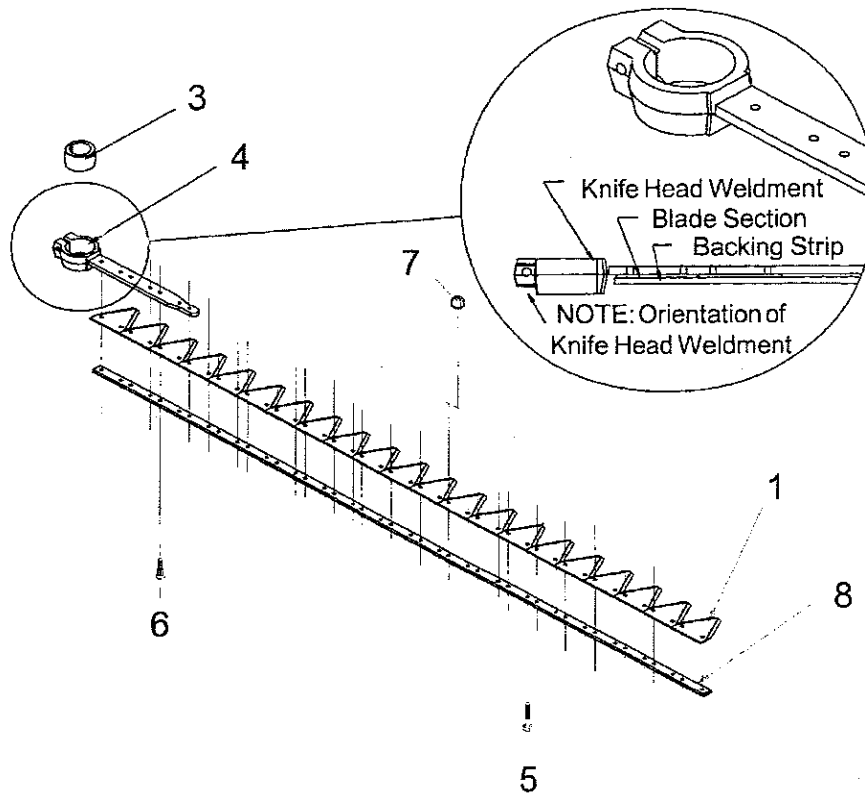
# **CUTTER BAR ASY - 6 FT RH WG - PN 02974372 - (03-01 TO CURRENT)**



ITEM	PART NO.	QTY.	DESCRIPTION
	<b>02974372</b>	--	<b>6' SICKLE BAR ASY.</b>
1	00001200	1	NUT
2	00019600	1	LOCKWASHER
3	00022200	2	LOCKWASHER
4	000516	1	CARRIAGE BOLT
5	0012700	1	KNIFE CLIP, HIGH
6	0046400	12	PLOW BOLT
7	00999316	26	NUT
8	0123800	1	OUTER SHOE SOLE
9	0129000	1	CARRIAGE BOLT
10	0188700	5	KNIFE CLIP
11	02974346	1	BAR CUTTER 6'
12	0532600	5	WEAR PLATE
13	0570900	1	OUTER SHOE ASY.
14	0571800	12	PLOW BOLT
15	0571900	1	WEAR PLATE
16	0593600	1	OUTER ROCK GUARD
17	0593700	22	CENTER ROCK GUARD
18	0593800	1	INNER ROCK GUARD, RH
19	12666000	1	CARRIAGE BOLT

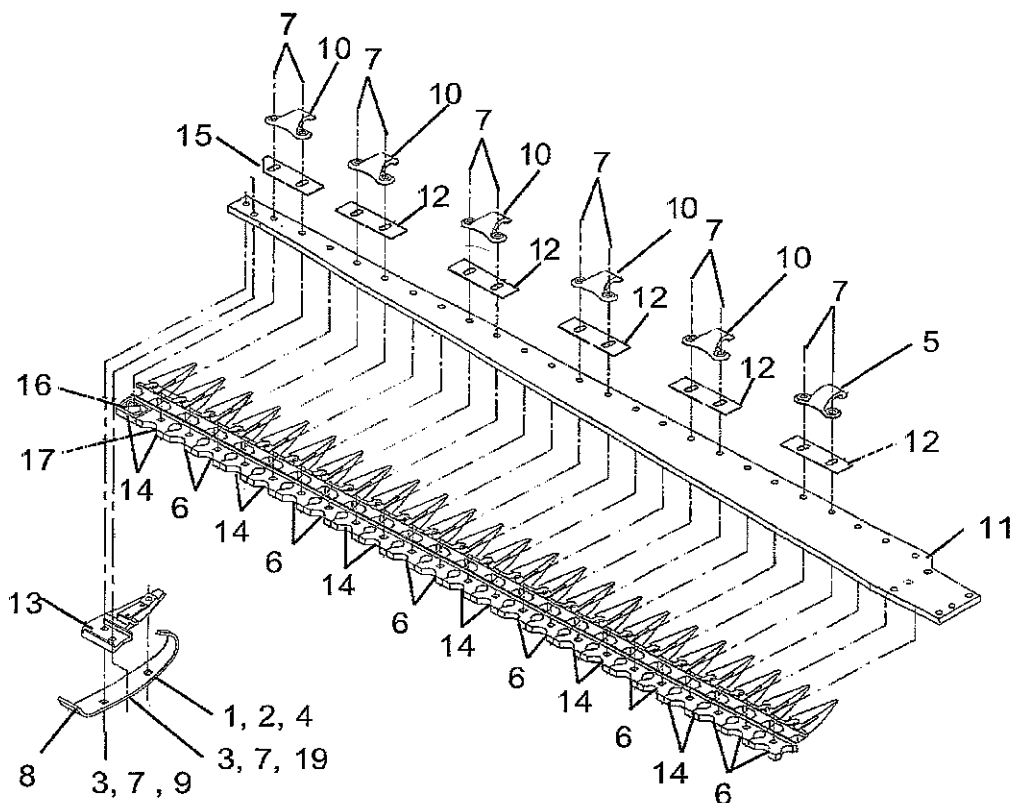
SWITCHBLADE 5 & 6 FT MECH. BRK-A-WAY - ARCHIVE MAN (08-06)

# Knife Bar - 6 ft RH WG - PN 02974373 - w/ Serrated Knives - (03-01 To Current)



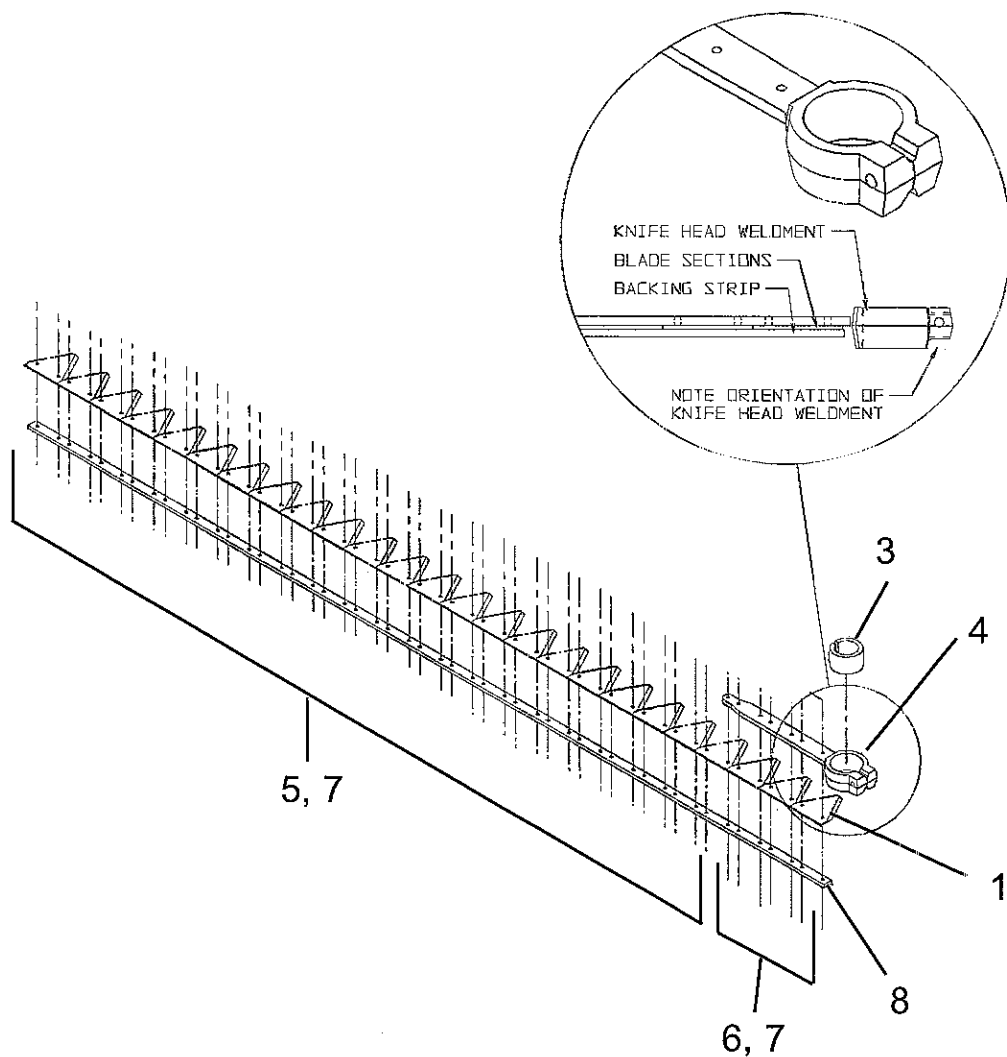
ITEM	PART NO.	QTY.	DESCRIPTION
	02974373	--	6' SERRATED KNIFE BAR ASY.
1	0064600	25	KNIFE SECTION 3"
2	0189900	1	KNIFE PROTECTOR,CARDBOARD 63"
3	02974316	1	INSERT NYLON DRIVE BRG CLAMP
4	02974349	1	KNIFE HEAD WLD'MT
	00756328	1	BOLT
5	02976270	43	SECTION BOLT
6	02976271	7	HEAD BOLT
7	02976272	50	LOCKNUT
8	0530100M	1	BACKING STRIP 6'

# **CUTTER BAR ASY - 6 FT LH WG - PN 02977717 - (03-01 TO CURRENT)**



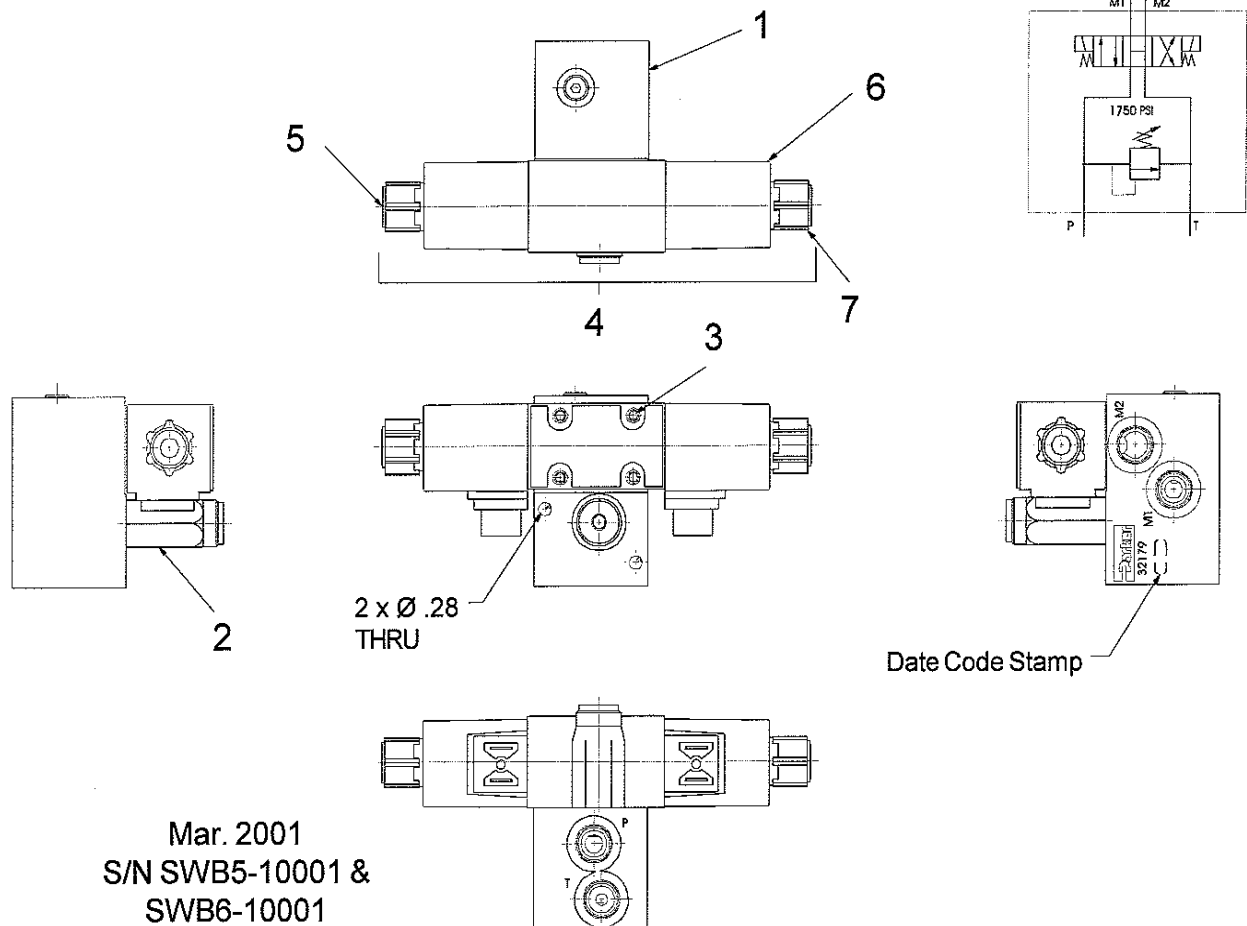
ITEM	PART NO.	QTY.	DESCRIPTION
	<b>02974372</b>	--	<b>6' CUTTER BAR ASY, RH WING</b>
1	00001200	1	NUT
2	00019600	1	LOCKWASHER
3	00022200	2	LOCKWASHER
4	000516	1	CARRIAGE BOLT
5	02983841	1	LOW ARCH HOLD DOWN CLIP
6	0046400	12	PLOW BOLT
7	00999316	26	NUT
8	0123800	1	OUTER SHOE SOLE
9	0129000	1	CARRIAGE BOLT
10	02983841	5	LOW ARCH HOLD DOWN CLIP
11	02974346	1	BAR CUTTER, 6'
12	0532600	5	WEAR PLATE
13	0570900	1	OUTER SHOE ASSEMBLY
14	0571800	12	PLOW BOLT
15	0571900	1	WEAR PLATE
16	0593600	1	OUTER ROCK GUARD
17	0593700	22	CENTER ROCK GUARD
18	0593800	1	INNER ROCK GUARD, RH
19	12666000	1	CARRIAGE BOLT

# **Knife Bar - 6 ft LH WG - PN 02977718 - w/ Serrated Knives - (03-01 To Current)**



ITEM	PART NO.	QTY.	DESCRIPTION
	<b>02977718</b>	<b>--</b>	<b>6' KNIFE BAR ASY, LH WING</b>
1	0064600	25	SERRATED KNIFE SECTION, 3"
2	0189900	1	KNIFE PROTECTOR, CARDBOARD 63"
3	02974316	1	INSERT NYLON DRIVE BRG CLAMP
4	02974349	1	KNIFE HEAD WLD'MT
	00756328	1	BOLT
5	02976270	43	SECTION BOLT
6	02976271	7	HEAD BOLT
7	02976272	50	LOCKNUT
8	0531900	1	BACKING STRIP, 6'

# HYD CNTRL VALVE SOLENOID ASY - (03-01 TO CURRENT)

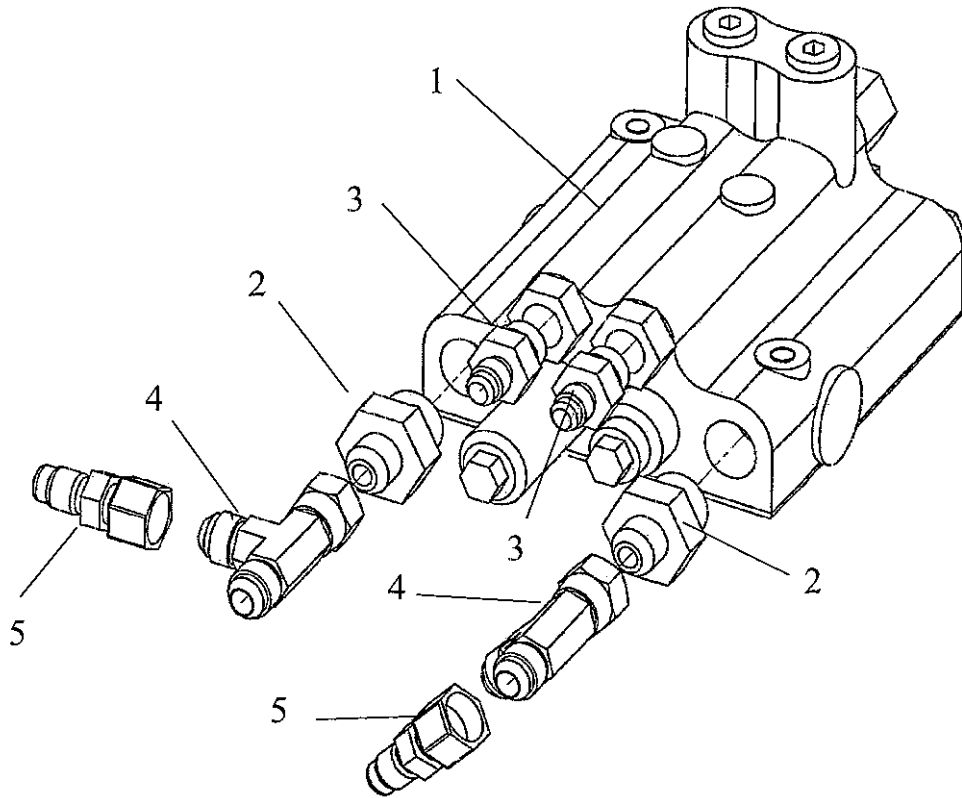


Mar. 2001  
S/N SWB5-10001 &  
SWB6-10001  
to  
S/N - Current

ITEM	PART NO.	QTY.	DESCRIPTION
	<b>02974305</b>	--	<b>VALVE SOLENOID ASY.</b>
1	02979345	1	BODY
2	02979346	1	RELIEF CARTRIDGE
3	02979190	1	BOLT KIT
4*	02979349	1	* SOLENOID ASY.
5	02979186	1	STEM TUBE ASY.
6	02979187	1	COIL SOLENOID
7	02979188	1	COIL NUT
*		*	* CONSISTS OF REPLACEMENT PARTS; STEM TUBE, COIL SOLENOID, COIL NUT.

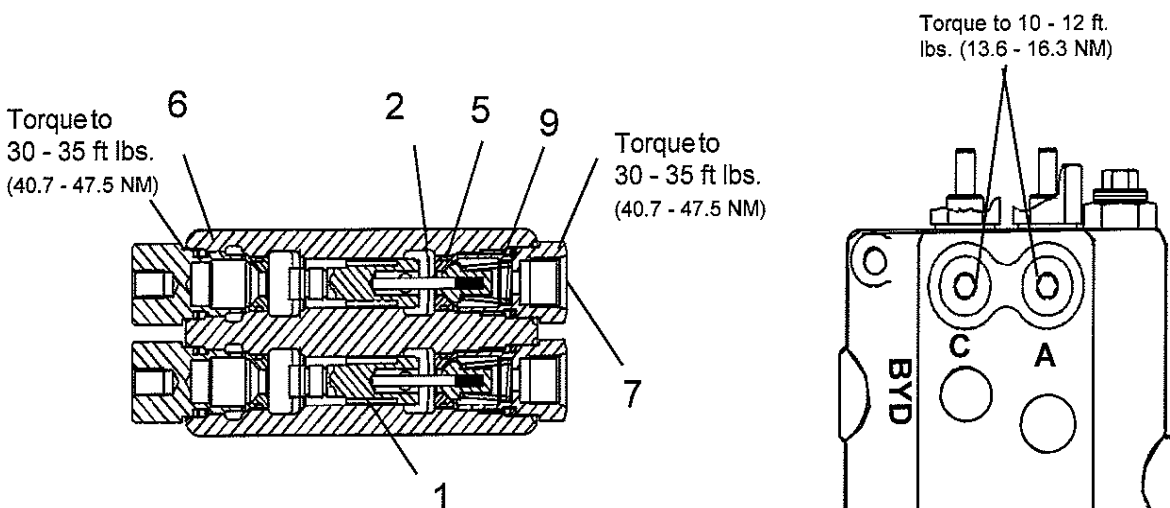


# HYD CNTRL VALVE ASY - W-FITTINGS - PN 02982077 - (03-01 TO CURRENT)

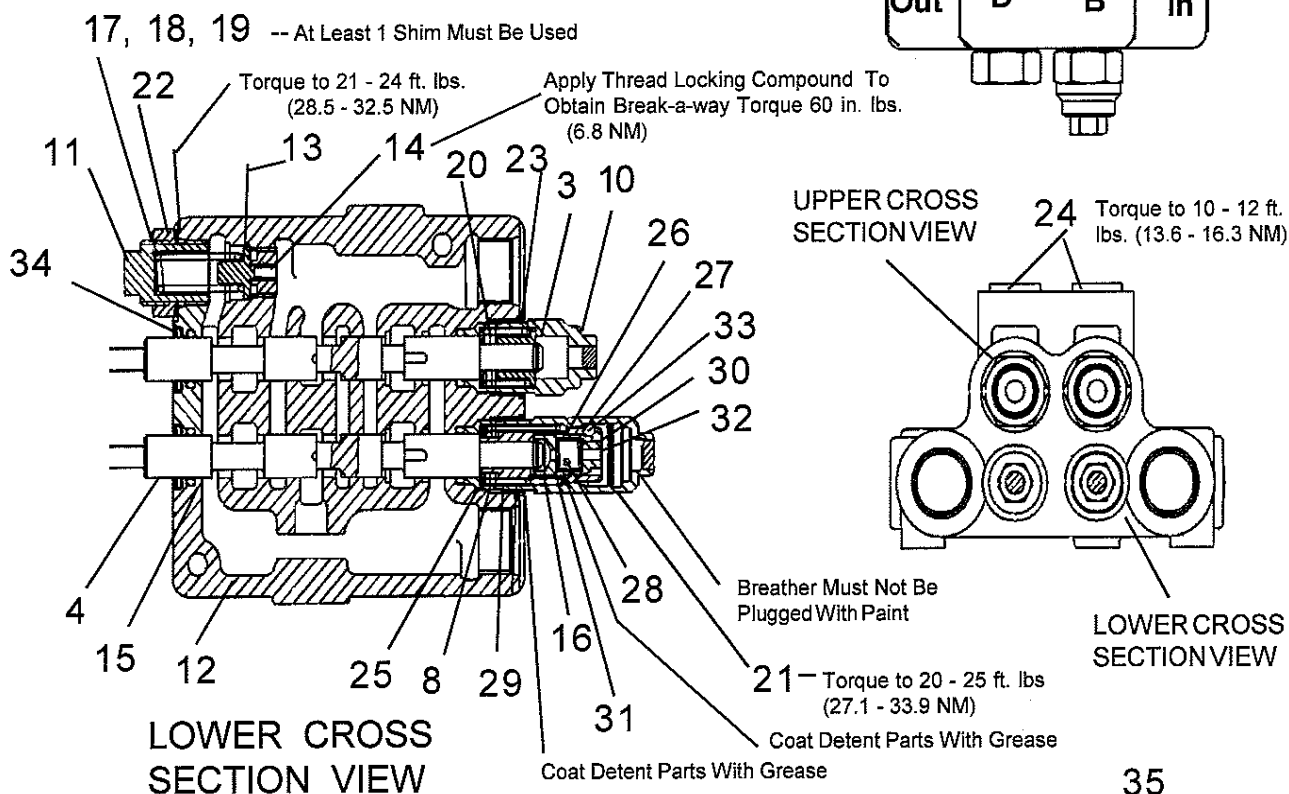


ITEM	PART NO.	QTY.	DESCRIPTION
	<b>02982077</b>	--	<b>VALVE ASY, W/ FITTINGS ( 2-SPOOL )</b>
1	02974306	1	VALVE, DIRECTIONAL CONTROL
2	02968850	2	HYD. ADAPTER STRAIGHT
3	03200284	2	HYD. ADAPTER STRAIGHT
4	02965166	2	HYD. TEE ADAPTER
5	02981896	2	HYD. ADAPTER

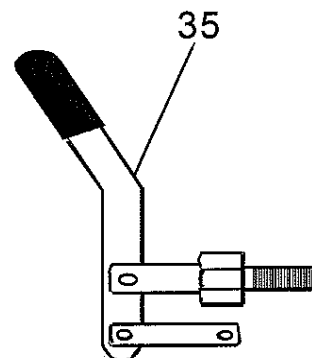
# HYD CNTRL VALVE ASY - W/O FITTINGS - (03-01 TO CURRENT)



UPPER CROSS SECTION VIEW



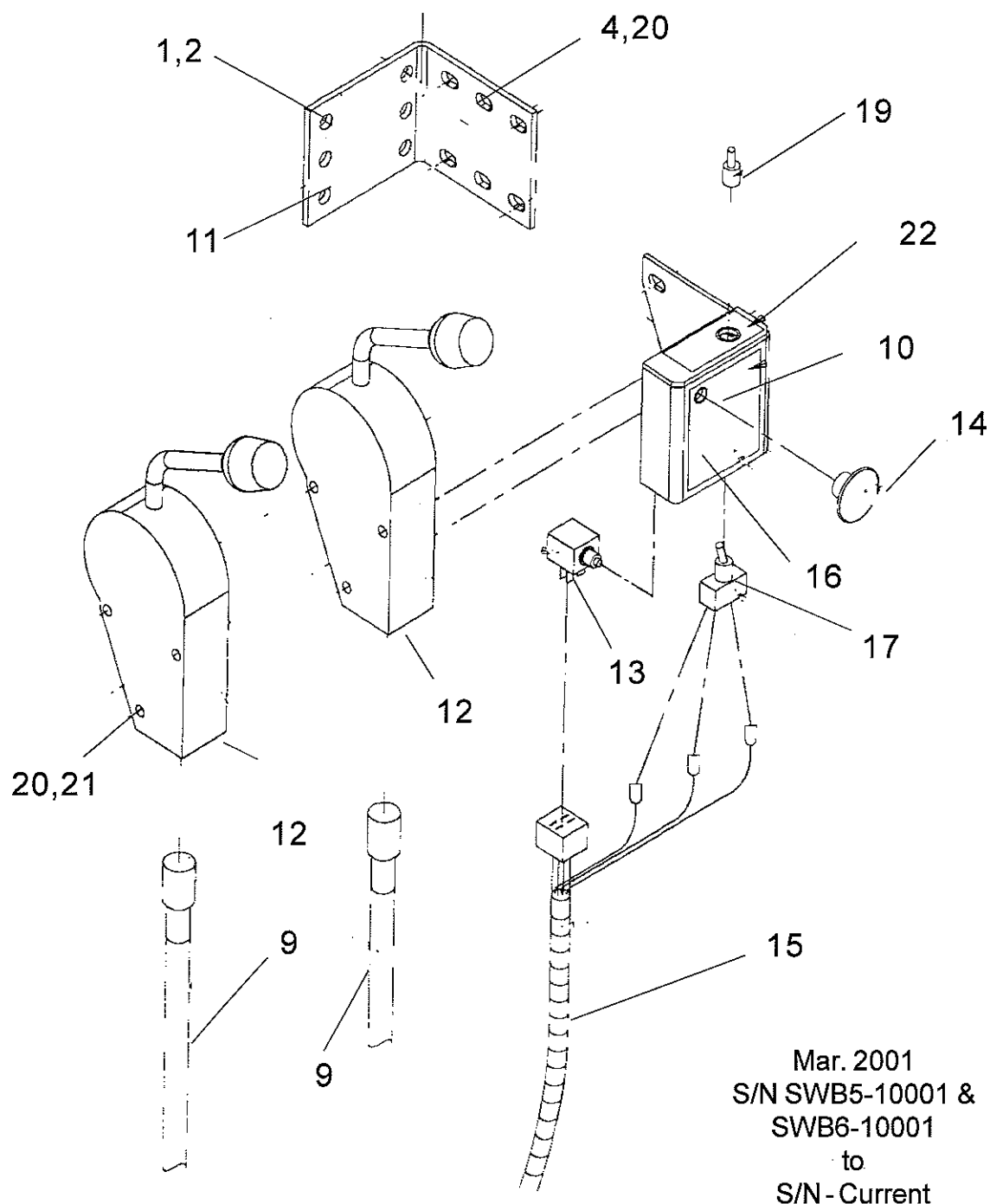
Mar. 2001  
S/N SWB5-10001 &  
SWB6-10001  
to  
S/N - Current



## HYD CNTRL VALVE ASY - W/O FITTINGS - (03-01 TO CURRENT)

ITEM	PART NO.	QTY.	DESCRIPTION
	<b>02974364</b>	--	<b>VALVE ASY, 2-SPOOL W/ FITTINGS</b>
	<b>02974306</b>	--	<b>VALVE ASY, 2 SPOOL W/O FITTINGS</b>
1	02976934	2	UNLOAD PLUNGER
2	02966645	2	POPPET ASY.
3	02966646	1	SPACER
4	02976933	2	SPOOL
5	02966648	4	SEAT ASY.
6	02966649	2	PLUG ASY.
7	02966650	2	PLUG ASY.
8	02966651	2	BUSHING
9	02966652	2	LOCKOUT SPRING
10	02966653	1	CAP ASY.
11	02966654	1	PLUG ASY.
12	02976932	1	BODY
13	02976931	1	POPPET
14	02976930	1	SEAT
15	02966657	4	O-RING
16	02966658	2	RETAINING RING
17	02966659	AR	WASHER
18	02966660	AR	WASHER
19	02966661	AR	WASHER
20	02966662	1	WASHER
21	02976946	1	CAP ASY.
22	02976945	1	SPRING
23	02966669	1	SPRING
24	02976944	2	PLUG ASY.
25	02976943	1	WASHER
26	02976942	1	WASHER
27	02976941	3	BALL
28	02976940	1	SPRING
29	02976939	1	SPRING
30	02976938	1	CONE
31	02976937	1	SPACER
32	02976936	1	ADAPTER CAP
33	02976935	AR	WASHER
34	02966671	2	WIPER SEAL
35	02976957	2	HANDLE KIT

# REMOTE CONTROL HANDLES - (03-01 TO CURRENT)

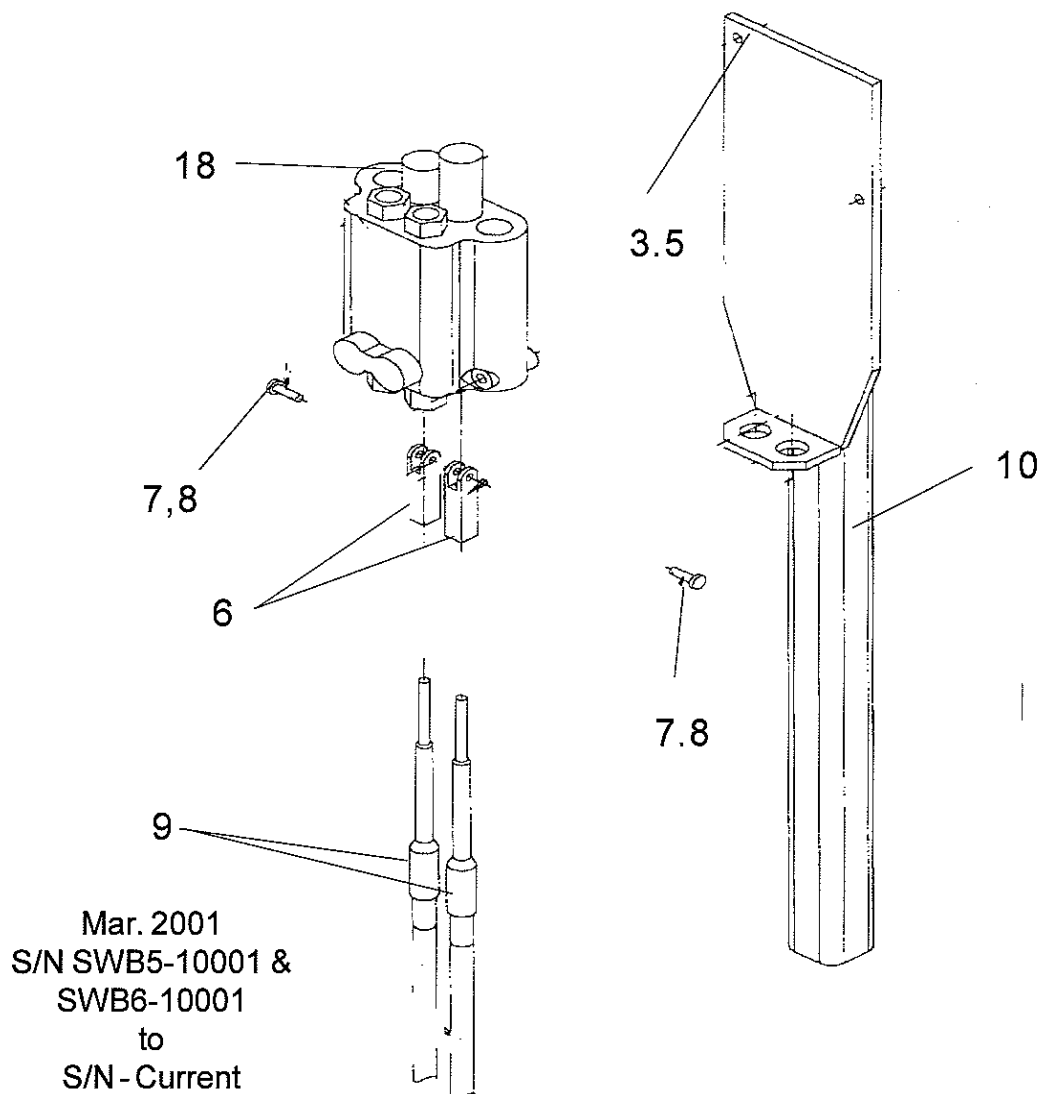


## REMOTE CONTROL HANDLES - (03-01 TO CURRENT)

ITEM	PART NO.	QTY.	DESCRIPTION
1	00015800	2	LOCKNUT ( NOT SHOWN )
2	000354	2	BOLT ( NOT SHOWN )
4	00750940	2	LOCKNUT
9	02971200	A/R	* CABLE, 48" LG
	02971201	A/R	* CABLE, 60" LG
	02971202	A/R	* CABLE, 72" LG
	02971203	A/R	* CABLE, 102" LG
10	02974296	1	SWITCH MOUNT WLD'MT
11	02974299	1	ANGLE MOUNT
12	02974323	2	SINGLE AXIS, CONTROL ASY.
13	02964028	1	PUSH PULL SWITCH
14	02964063	1	KNOB, F/ SWITCH
15	02974318	1	WIRE HARNESS, SINGLE
16	02974321	1	DECAL INSTRUCT VALVE & SWITCH
17	02974322	1	TOGGLE SWITCH, 3 POSITION
19	02974962	1	TOGGLE SWITCH, BOOT COVER
20	00023500	6	FLATWASHER
21	02733700	3	BOLT
22	02975270	1	DECAL, INSTRUCT. REVERSING SWITCH

NOTE: \* CABLE LENGTH WILL VARY WITH TYPE OF TRACTOR THAT IS USED. MEASURE CABLES REFER TO ORIGINAL MOUNT KIT COMPONENTS LIST TO DETERMINE WHICH CABLE IS NEEDED.

## REMOTE CONTROL VALVE STAND - (03-01 TO CURRENT)



NOTE: Remote Control Valve Stand only used with remote control Option and parts on previous page showing remote control handles. Standard model used a mechanical handle assembly shown on previous pages. Note the same valve is used with the remote handles or the mechanical handles. Item 10 Valve stand part number will vary with the type of Tractor clipper is mounted on.

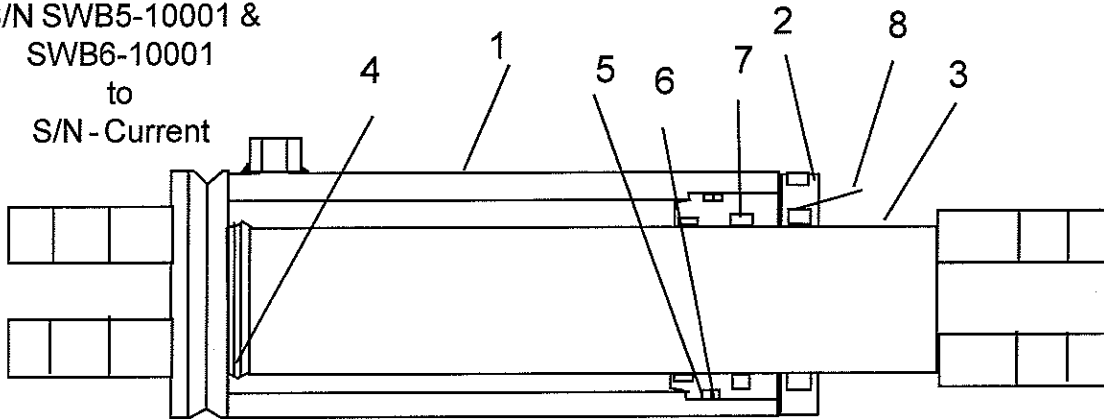
## REMOTE CONTROL VALVE STAND - (03-01 TO CURRENT)

ITEM	PART NO.	QTY.	DESCRIPTION
3	001636	2	BOLT ( NOT SHOWN )
5	02959924	2	LOCKNUT
6	02966687	2	YOKE ADJUSTMENT END
7	02966688	2	CLEVIS PIN
8	02968698	2	PIN COTTER
9	02971200	A/R	CABLE, 48" LG
	02971201	A/R	CABLE, 60" LG
	02971202	A/R	CABLE, 72" LG
	02971203	A/R	CABLE, 102" LG
10	-----	1	VALVE STAND, VARIES W/ MOUNT KIT
18	02974364	1	VALVE ASY., 2-SPOOL W/ FITTINGS

NOTE : REMOTE CONTROL VALVE STAND IS ONLY USED WITH REMOTE CONTROL OPTION AND PARTS ON PREVIOUS PAGE SHOWING REMOTE CONTROL HANDLES. STANDARD MODEL USED A MECHANICAL HANDLE ASSEMBLY SHOWN ON PREVIOUS PAGES. NOTE THE SAME VALVE IS USED WITH THE REMOTE HANDLES OR THE MECHANICAL HANDLES. ITEM # 10 V

# HYD CYL - BAR LIFT - (03-01 TO CURRENT)

Mar. 2001  
S/N SWB5-10001 &  
SWB6-10001  
to  
S/N - Current

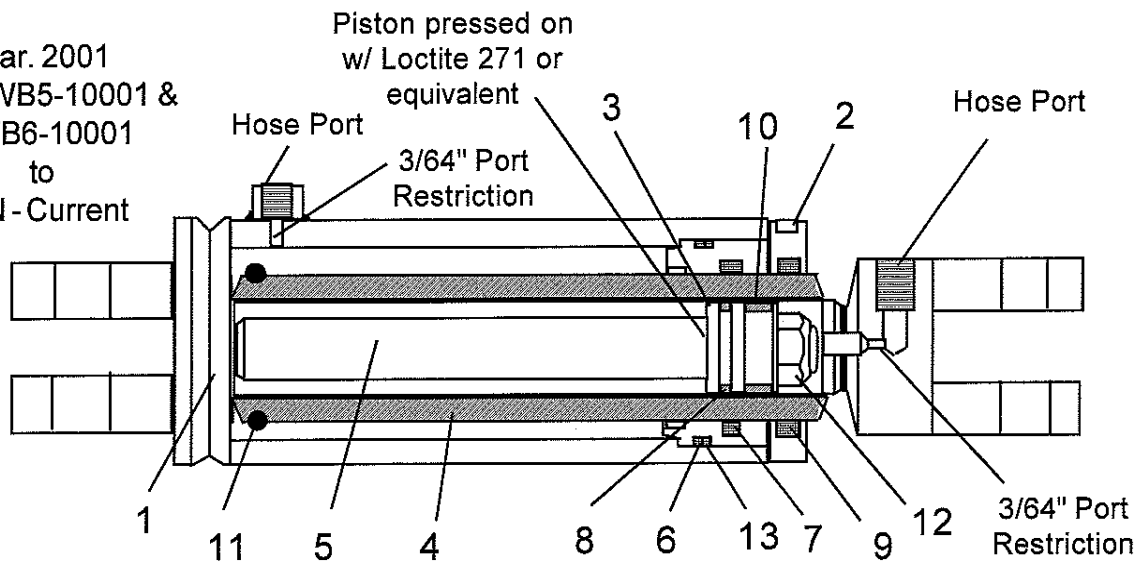


ITEM	PART NO.	QTY.	DESCRIPTION
	<b>0693500A</b>	---	<b>BAR TILT CYLINDER</b>
1	02977114	1	TUBE WLD'MT
2	02977116	1	CYLINDER HEAD
3	02977115	1	ROD WLD'MT
4	-----	1	RING WIRE
5	-----	1	O-RING
6	-----	1	SEAL
7	-----	1	SEAL
8	-----	1	ROD WIPER SEAL
9	02977121	1	SEAL KIT, ( ITEMS 4,5,6,7 & 8 )



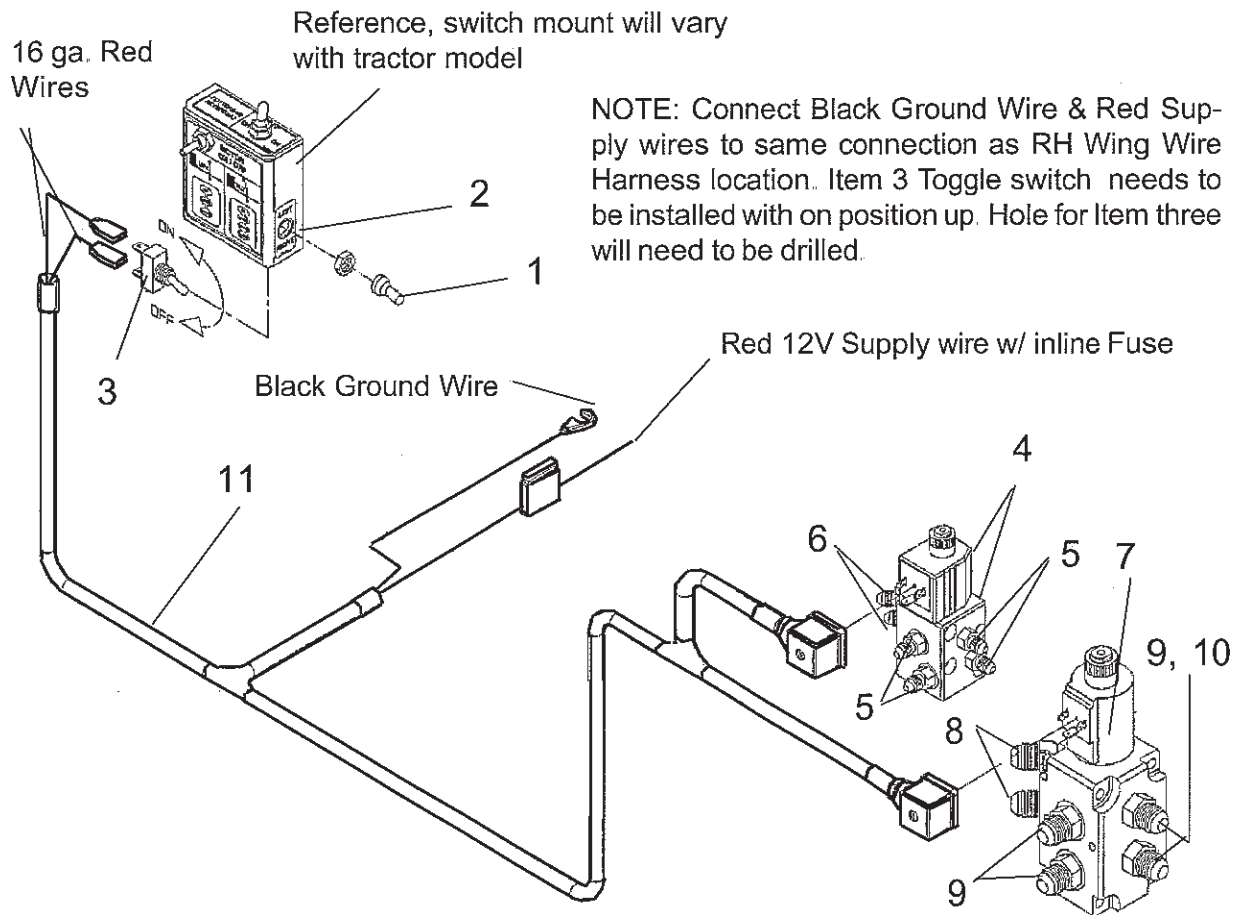
# HYD CYL - CURB STOP - (03-01 TO CURRENT)

Mar. 2001  
S/N SWB5-10001 &  
SWB6-10001  
to  
S/N - Current



ITEM	PART NO.	QTY.	DESCRIPTION
	<b>0693400A</b>	---	<b>CURB STOP CYLINDER</b>
1	02977114	1	TUBE WLD'MT
2	02977116	1	CYLINDER HEAD
3	02977118	1	PISTON
4	02977122	1	ROD WLD'MT
5	02977123	1	INNER ROD
6	-----	1	O-RING
7	-----	1	SEAL
8	-----	1	PISTON RING SEAL
9	-----	1	ROD WIPER SEAL
10	-----	1	WEAR RING
11	-----	1	WEAR RING
12	02208000	1	LOCKNUT
13	-----	1	SEAL
14	02977121	1	SEAL KIT ( ITEMS 6,7,8,9,10,11 & 13 )

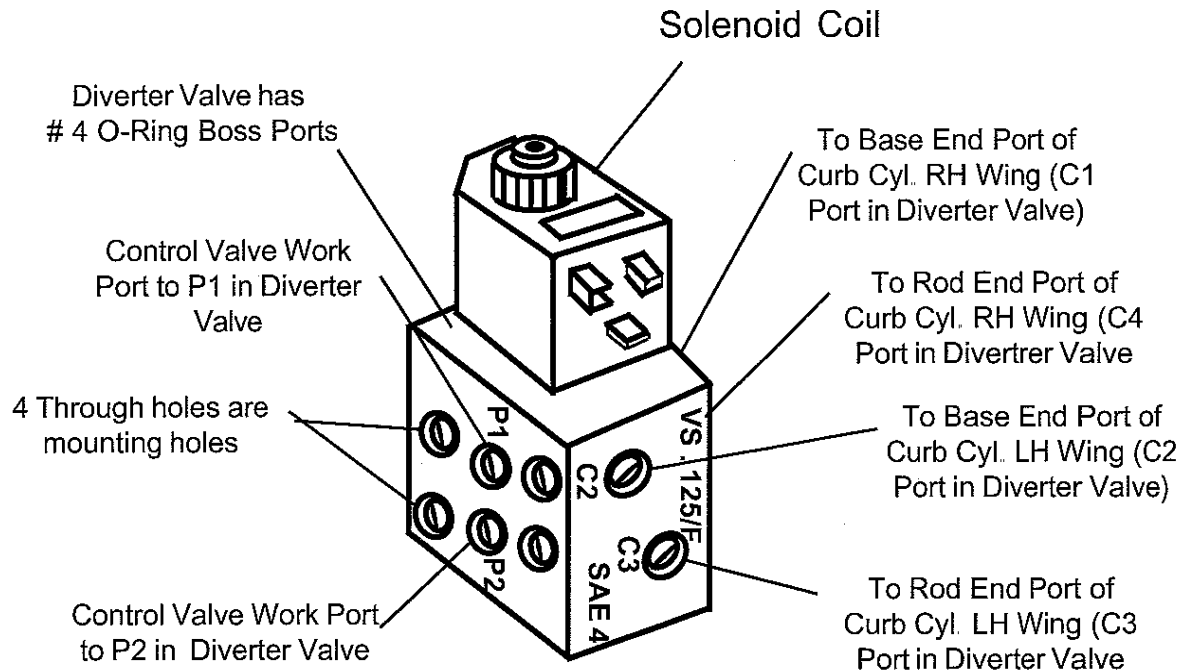
# **HYD DIVERTER VALVES - PN 02992334 - PN 02977622 - (03-01 TO CURRENT)**



ITEM	PART NO.	QTY.	DESCRIPTION
1	02974962	1	BOOT, TOGGLE SWITCH COVER
2	02977825	1	DECAL, INSTRUCT. LEFT & RIGHT SWITCH
3	02977826	1	SWITCH, 2-POSITION "ON" & "OFF"
4	02977622	1	DIVERTER VALVE & SOLENOID, # 4 PORTS
5	02962181	4	HYD. ADAPTER STRAIGHT
6	02977915	2	HYD. ADAPTER ELBOW
7	02992334	1	DIVERTER VALVE & SOLENOID DIVERTER, # 8 PORTS
8	02962214	2	HYD. ADAPTER ELBOW
9	00696800	4	HYD. ADAPTER STRAIGHT
10	02761100	2	HYD. ADAPTER ELBOW
11	02977754	1	WIRE HARNESS, LH DUAL WINGS

## HYD DIVERTER VALVE - CYL CNTRL - PN 02977622 - (03-01 TO CURRENT)

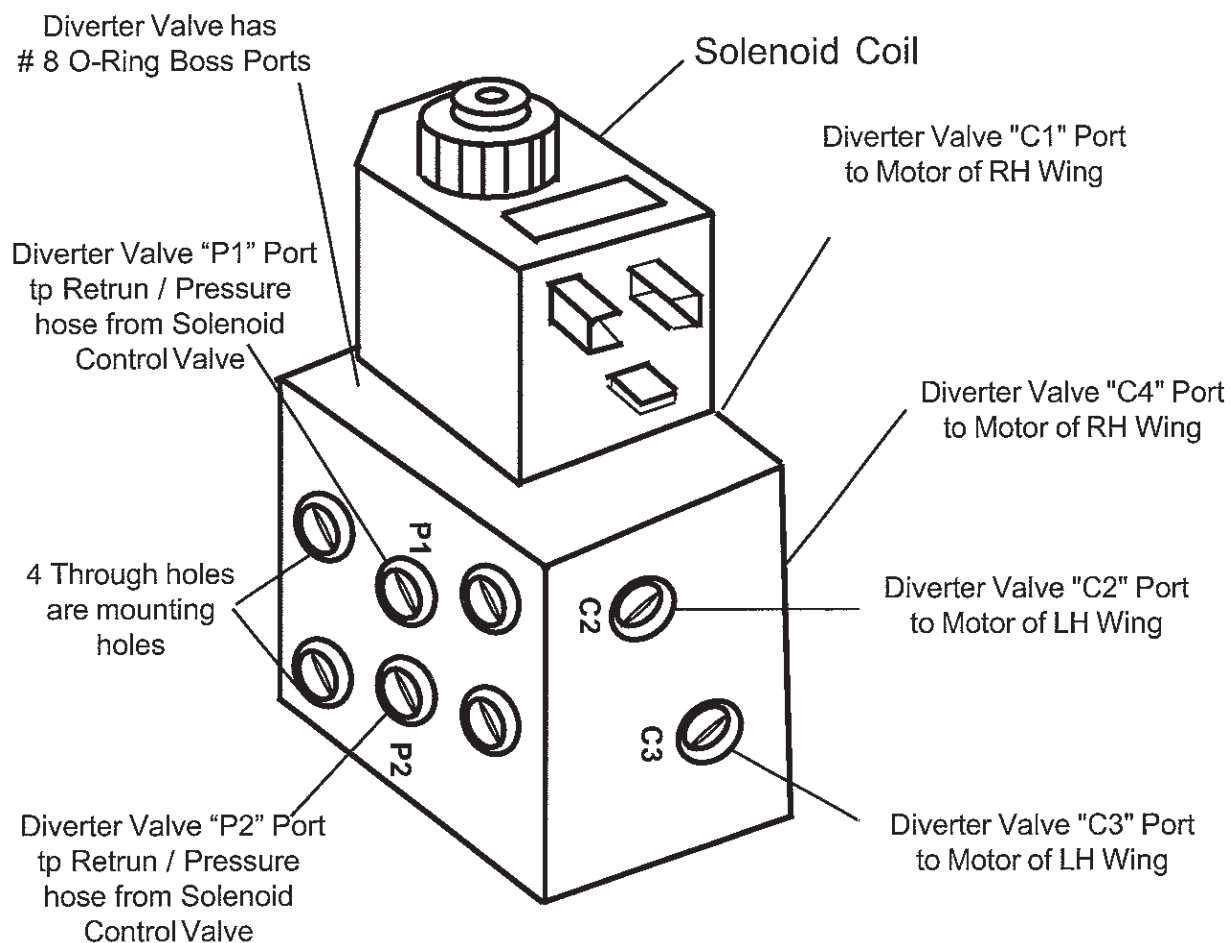
### Diverter Valve 02977622 (Cylinder Control)



ITEM	PART NO.	QTY.	DESCRIPTION
1	02977622	1	VALVE, SOLENOID DIVERTER (USE W/ DUAL WINGS)

## HYD DIVERTER VALVE - MTR CNTRL - PN 02992334 - (03-01 TO CURRENT)

### Diverter Valve 02977621 (Motor Control)



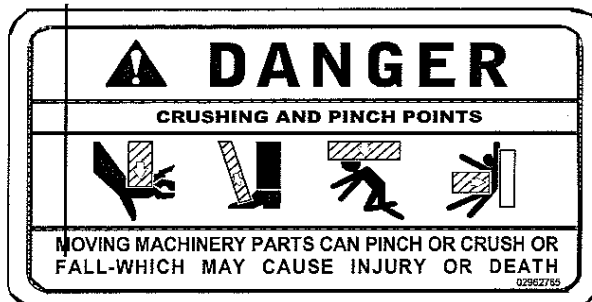
ITEM	PART NO.	QTY.	DESCRIPTION
1	02992334	1	VALVE, SOLENOID DIVERTER (USE W/ DUAL WINGS)



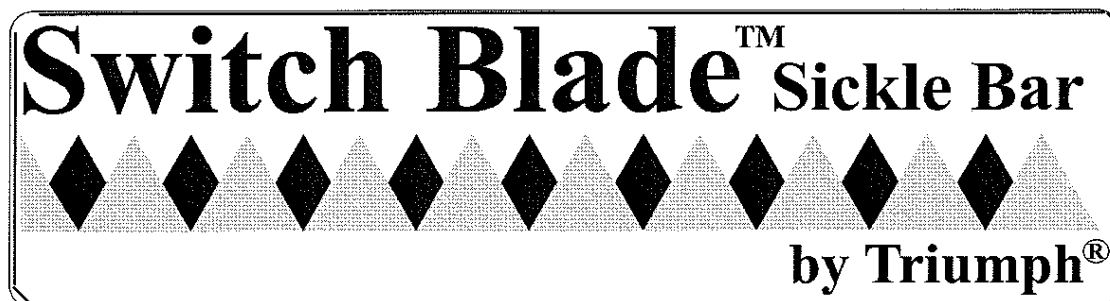
# DECALS - SAFETY & INSTRUCTIONS I - (03-01 TO CURRENT)



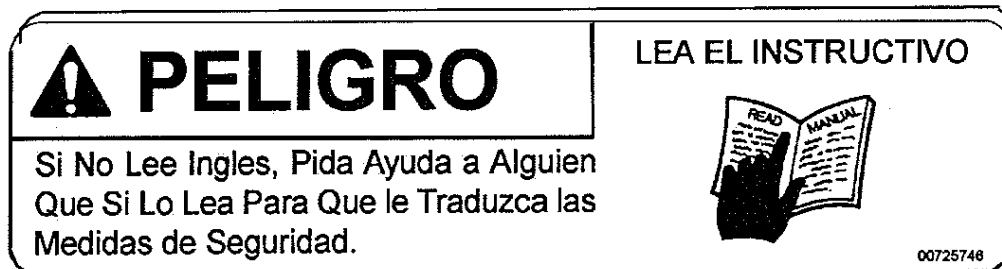
P/N 02966307



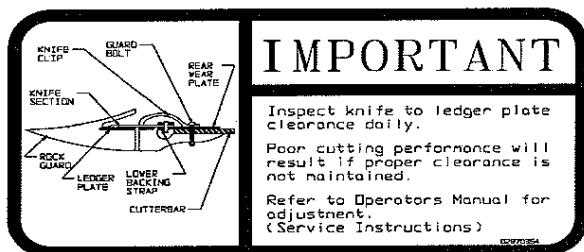
P/N 02962765



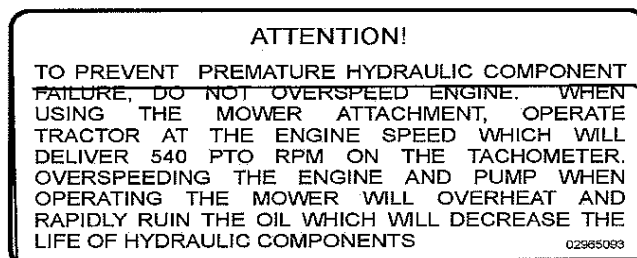
P/N 02974997



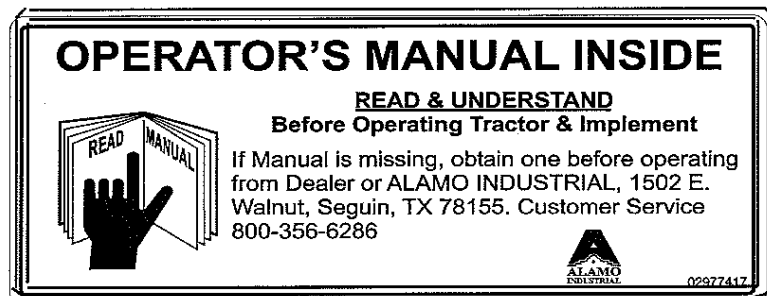
P/N 00725746



P/N 02970354



P/N 02965093



P/N 02977417

Mar. 2001  
S/N SWB5-10001 &  
SWB6-10001  
to  
S/N - Current

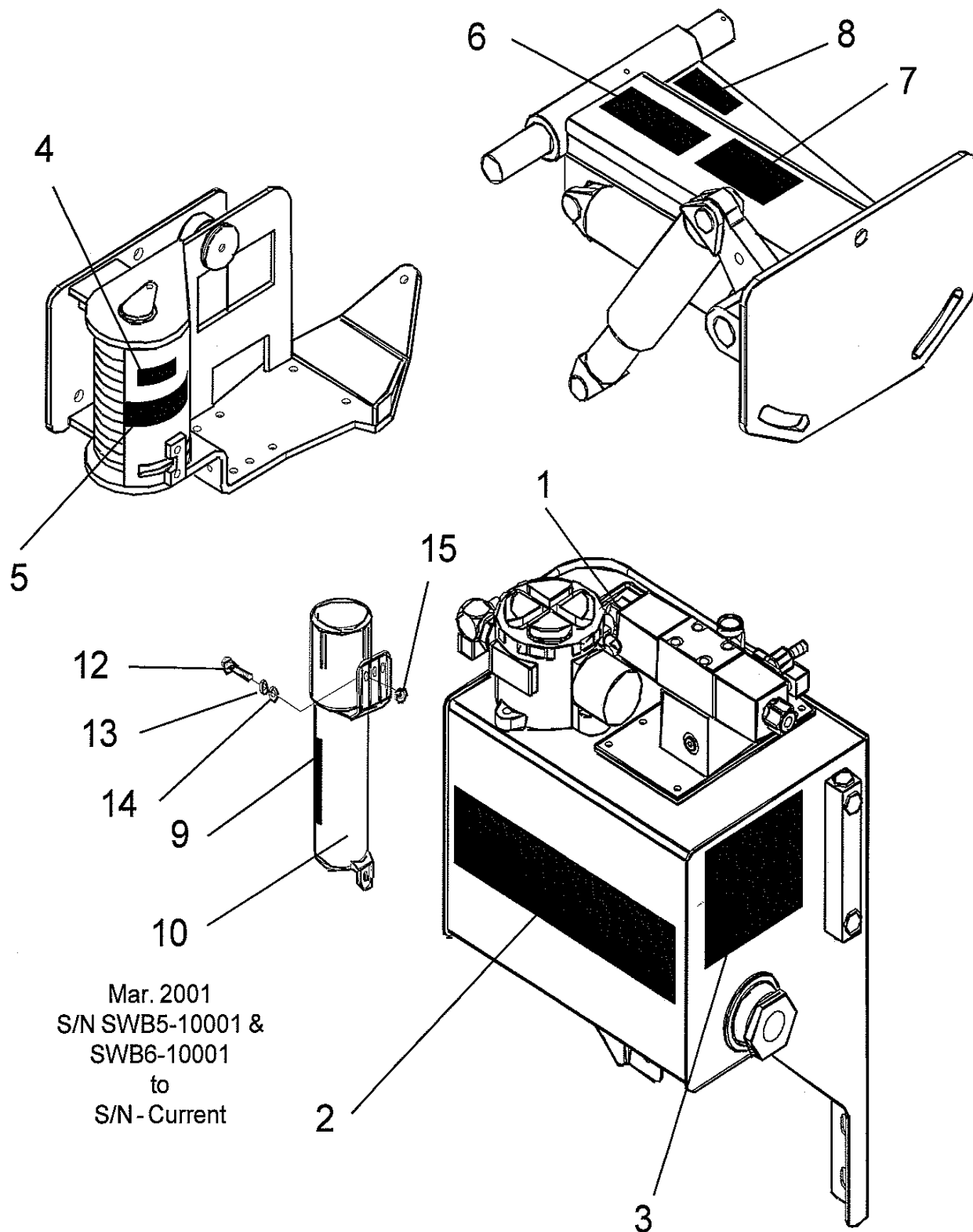
SWITCHBLADE 5 & 6 FT MECH. BRK-A-WAY - ARCHIVE MAN (08-06)

## DECALS - SAFETY & INSTRUCTIONS I - (03-01 TO CURRENT)

ITEM	PART NO.	QTY.	DESCRIPTION
	02966307	A/R	OIL,UNIVERSAL TRACTOR HYD.
	02962765	A/R	DECAL-MULTIPLE HAZARD
	02974997	A/R	DECAL NAME SWITCH BLADE SICKLE
	00725746	A/R	DECAL PELIGRO
	02970354	A/R	DECAL,KNIFE CLEARANCE
	02965093	A/R	DECAL-PROPER ENGINE OPERATING
	02977417	A/R	DECAL OPERATORS MANUAL INSIDE

SWITCHBLADE 5 & 6 FT MECH. BRK-A-WAY - ARCHIVE MAN (08-06)

# DECALS - MOWER LOCATION - (03-01 TO CURRENT)





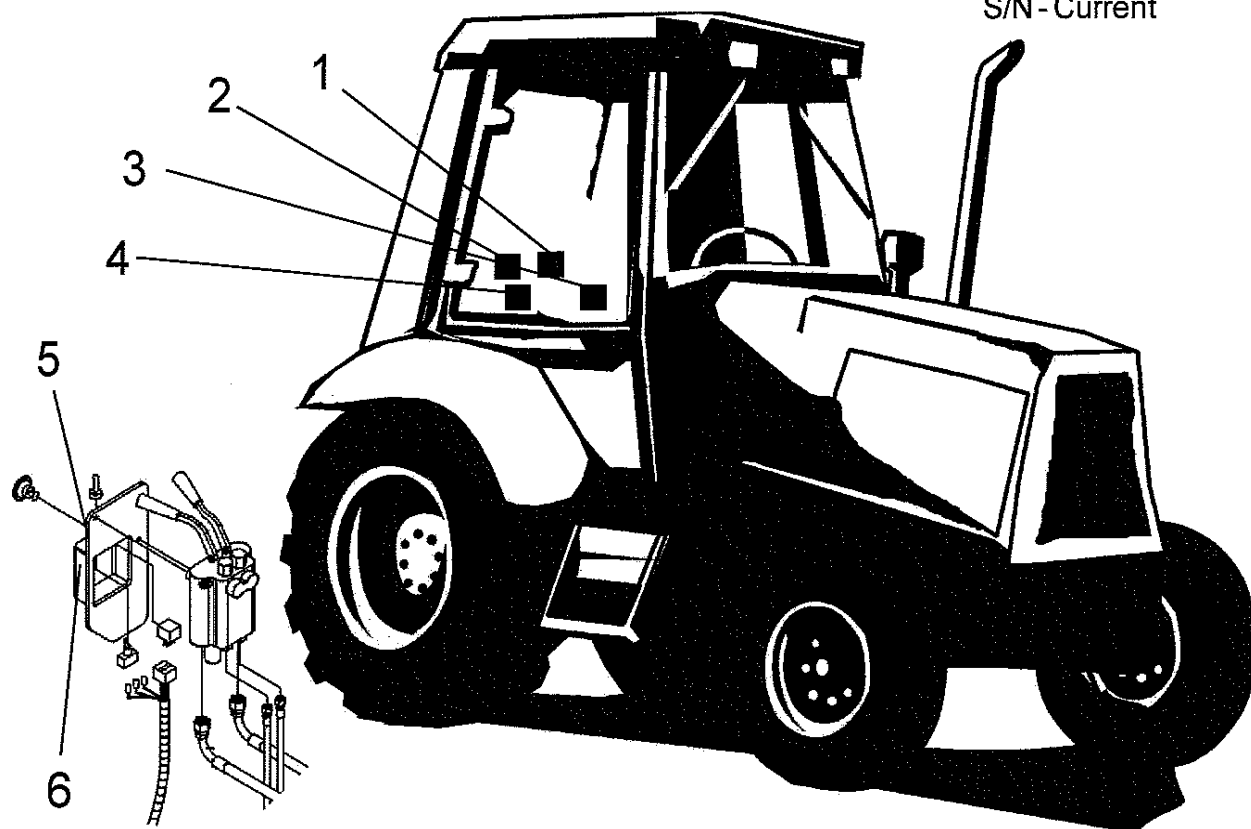
## DECALS - MOWER LOCATION - (03-01 TO CURRENT)

ITEM	PART NO.	QTY.	DESCRIPTION
1	02966305	1	INSTRUCT, UNIVERSAL TRACTOR
2	02974997	1	NAME, SWITCH BLADE
3	02965262	1	WARNING, HOSE BURST
4	000678	1	INSTRUCT, GREASE FITTING INSIDE
5	0614600	1	CAUTION, SPRING
6	02962765	1	DANGER, MULTIPLE HAZARD
7	0614500	1	CAUTION, NO STEP
8	NFS	1	SERIAL NO. PLATE SWITCH BLADE
9	02977417	1	INSTRUCT, OPERATORS MANUAL INSIDE
10	00776031	1	CANISTER, PARTS MANUAL
11	02974374C	1	SWITCH BLADE, OPERATORS MANUAL
12	10058000	3	BOLT
13	00017000	3	LOCKWASHER
14	00024100	3	FLATWASHER
15	02959924	3	LOCKNUT

SWITCHBLADE 5 & 6 FT MECH. BRK-A-WAY - ARCHIVE MAN (08-06)

## DECALS - TRACTOR LOCATION - (03-01 TO CURRENT)

Mar. 2001  
S/N SWB5-10001 &  
SWB6-10001  
to  
S/N - Current



ITEM	PART NO.	QTY.	DESCRIPTION
1	02970354	1	INSTRUCT, KNIFE CLEARANCE
2	02965093	1	INSTRUCT, PROPER ENGINE OPERATING
3	00725746	1	PELIGRO, SPANISH TRANSLATION
4	0410300	1	WARNING, WARNING SIGN
5	02975270	1	INSTRUCT, BAR REVERSING SWITCH
6	02974321	1	INSTRUCT, VALVE OPERATION



## DECALS - SAFETY & INSTRUCTIONS II - (03-01 TO CURRENT)

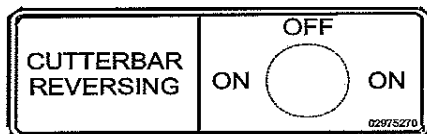
### CAUTION

1. KEEP ALL SHIELDS IN PLACE
2. STOP MACHINE TO ADJUST AND OIL
3. IF MECHANISM BECOMES CLOGGED SHUT OFF POWER BEFORE CLEANING
4. KEEP HANDS, FEET AND CLOTHING AWAY FROM POWER-DRIVEN PARTS
5. KEEP OFF MOWER AND KEEP OTHERS OFF
6. WARN BYSTANDERS TO KEEP AWAY

P/N 0410300

**GREASE  
FITTING  
INSIDE**

P/N 000678



P/N 02975270

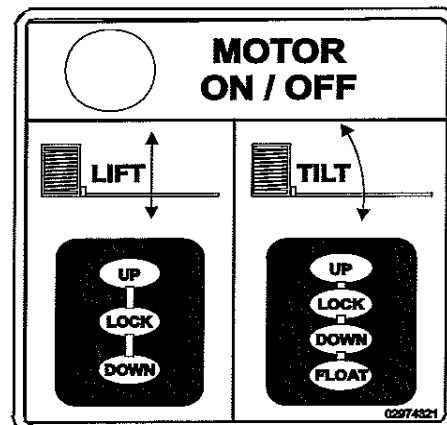
### CAUTION

**NO STEP**

**KEEP HANDS AND FEET OFF MACHINE**

P/N 0614500

Mar. 2001  
S/N SWB5-10001 &  
SWB6-10001  
to  
S/N - Current



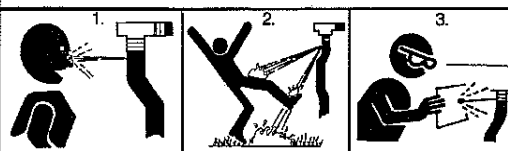
P/N 02974321

### CAUTION

**SPRING IS PRELOADED  
REMOVE BOLTS WITH CARE**

P/N 0614600

### WARNING!



Failure to INSPECT and REPAIR or REPLACE Hoses may allow worn Hoses to rupture SUDDENLY and VIOLENTLY with resulting serious BODILY INJURY from SCALDING or FIRE with resulting BURN INJURY or DEATH.

1. Frayed, torn, or crimped Hoses may RUPTURE and spray BOILING OIL onto Operator and cause serious BODILY INJURY from scalding.

2. Boiling Oil may spray onto HOT TRACTOR PARTS and CATCH FIRE with SEVERE BURN INJURY or DEATH.

3. Use Paper or Cardboard to check for leaks. NEVER USE YOUR HAND. If oil penetrates skin, gangrene or other serious injury could occur. GET IMMEDIATE MEDICAL ATTENTION. See Manual.

KEEP SHIELDS OVER HYDRAULIC COMPONENTS IN PLACE. Inspect Hoses daily and repair or replace when needed. Stop all leaks. Repair or replace hoses as indicated to prevent unexpected failure and possible serious injury to operator or bystander.

02965262

P/N 02965262

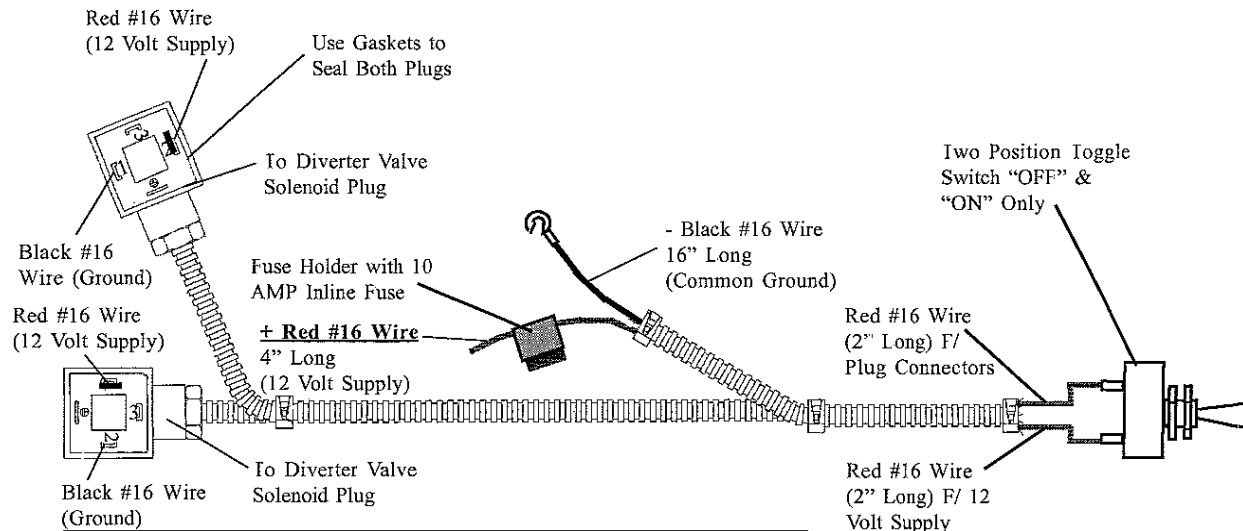
## DECALS - SAFETY & INSTRUCTIONS II - (03-01 TO CURRENT)

ITEM	PART NO.	QTY.	DESCRIPTION
	0410300	A/R	DECAL-WARNING SIGN
	02974321	A/R	DECAL INSTRUCT VALVE & SWITCH
	000678	A/R	DECAL- GREASE FITTING INSIDE
	0614600	A/R	DECAL
	02975270	A/R	DECAL INST REVERSING SWITCH
	0614500	A/R	DECAL
	02965262	A/R	DECAL- WARNING HOSE BURST

SWITCHBLADE 5 & 6 FT MECH. BRK-A-WAY - ARCHIVE MAN (08-06)



# WIRE HARNESS - DUAL WG - PN 02977754 - (03-01 TO CURRENT)



**NOTE: + Red # 16 Wire** (12 Volt Supply) Connect to Key Switch Connection that is positive only when ignition key is in "ON" Position. If connected to direct power supply and push pull switch is left on when tractor is stopped and parked it will run down the tractor battery.

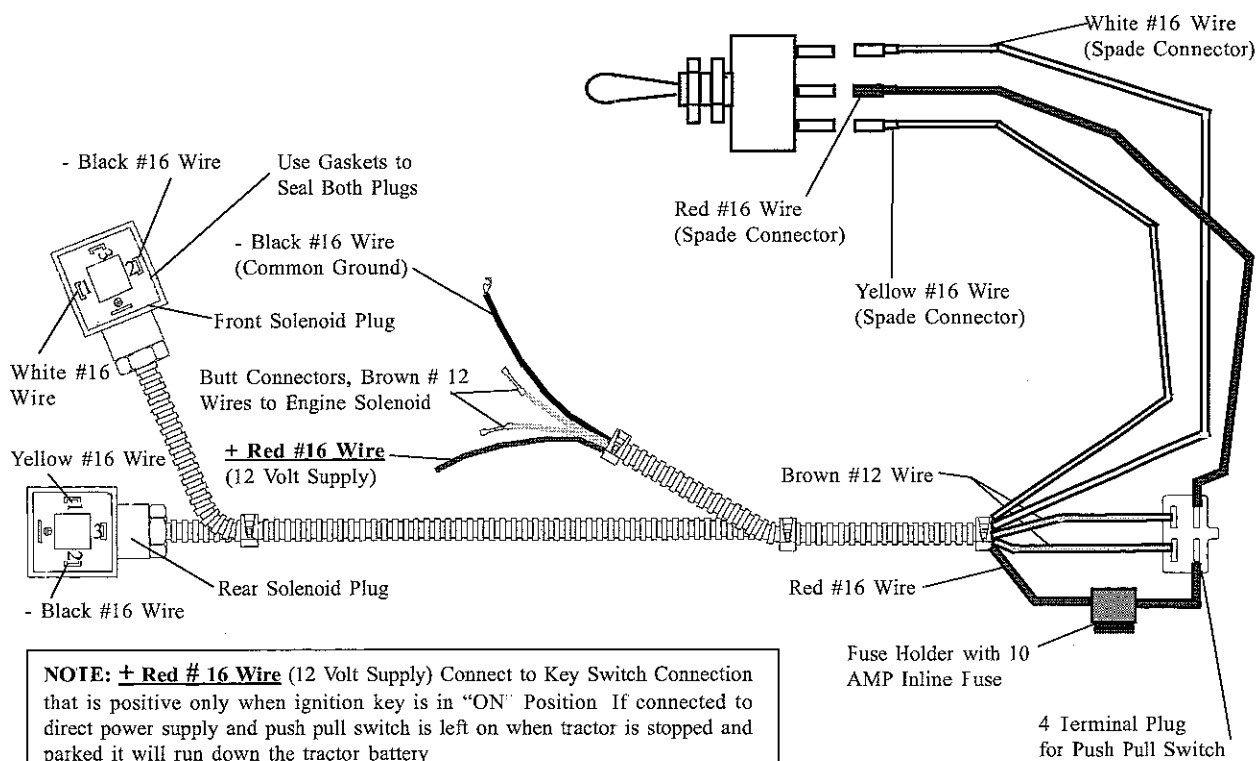
It will not matter which plug goes on which diverter valve as both diverter valves are activated at the same time with the same toggle switch.

ITEM	PART NO.	QTY.	DESCRIPTION
	<b>02977754</b>	--	<b>WIRE HARNESS LH DUAL WING</b>
2	02965731	1	FUSE 10 AMP, TYPE ATO

NOTE: Toggle Switch is shown for illustration only and is not included with wire harness.

NOTE: This wire harness is only used when LH wing is mounted. It does not replace the RH Harness but is used with it.

# WIRE HARNESS - SINGLE WG - PN 02974318 - (03-01 TO CURRENT)

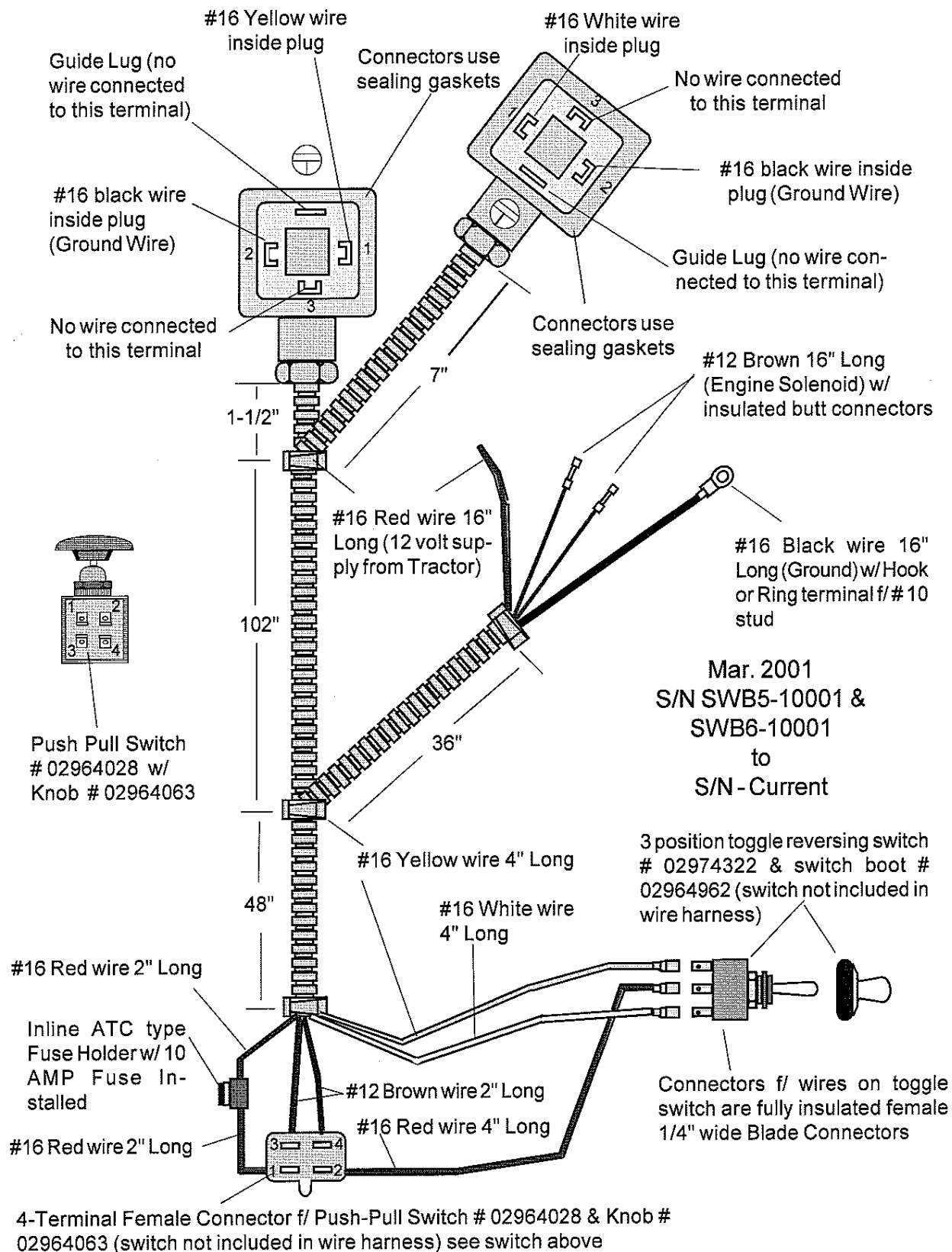


ITEM	PART NO.	QTY.	DESCRIPTION
1	02974318	A/R	WIRE HARNESS SINGLE

NOTE: Wiring harness used on single wing as standard.



# WIRE HARNESS PN 02974318 - (03-01 TO CURRENT)





# ALAMO INDUSTRIAL

## Limited Warranty

### 1. Limited Warranties

- 1.01. Alamo industrial warrants for one year from the purchase date to the original non-commercial, governmental, or municipal purchaser ("purchaser") and warrants for six months to the original commercial or industrial purchaser ("purchaser") that the goods purchased are free from defects in material or workmanship.
- 1.02. Manufacturer will replace for the purchaser any part or parts found, upon examination at one of its factories, to be defective under normal use and service due to defects in material or workmanship.
- 1.03. This limited warranty does not apply to any part of the goods which has been subjected to improper or abnormal use, negligence, alteration, modification, or accident, damaged due to lack of maintenance or use of wrong fuel, oil, or lubricants, or which has served its normal life. This limited warranty does not apply to any part of any internal combustion engine, or expendable items such as blades, shields, guards, or pneumatic tires except as specifically found in your operator's manual.
- 1.04. Except as provided herein, no employee, agent, dealer, or other person is authorized to give any warranties of any nature on behalf of manufacturer.

### 2. Remedies And Procedures

- 2.01. This limited warranty is not effective unless the purchaser returns the registration and warranty form to manufacturer within 30 days of purchase.
- 2.02. Purchaser claims must be made in writing to the authorized dealer ("dealer") from whom purchaser purchased the goods or an approved authorized dealer ("dealer") within 30 days after purchaser learns of the facts on which the claim is based.
- 2.03. Purchaser is responsible for returning the goods in question to the dealer.
- 2.04. If after examining the goods and/or parts in question, manufacturer finds them to be defective under normal use and service due to defects in material or workmanship, manufacturer will:
  - (A) repair or replace the defective goods or part(s) or
  - (B) reimburse purchaser for the cost of the part(s) and reasonable labor charges (as determined by manufacturer) if purchaser paid for the repair and/or replacement prior to the final determination of applicability of the warranty by manufacturer. The choice of remedy shall belong to manufacturer.
- 2.05. Purchaser is responsible for any labor charges exceeding a reasonable amount as determined by manufacturer and for returning the goods to the dealer, whether or not the claim is approved. Purchaser is responsible for the transportation cost for the goods or part(s) from the dealer to the designated factory.

### 3. Limitation Of Liability

- 3.01. Manufacturer disclaims any express (except as set forth herein) and implied warranties with respect to the goods including, but not limited to, merchantability and fitness for a particular purpose.
- 3.02. Manufacturer makes no warranty as to the design, capability, capacity, or suitability for use of the goods.
- 3.03. Except as provided herein, manufacturer shall have no liability or responsibility to purchaser or any other person or entity with respect to any liability, loss, or damage caused or alleged to be caused directly or indirectly by the goods including, but not limited to, any indirect, special, consequential, or incidental damages resulting from the use or operation of the goods or any breach of this warranty. Notwithstanding the above limitations and warranties, manufacturer's liability hereunder for damages incurred by purchaser or others shall not exceed the price of the goods.
- 3.04. No action arising out of any claimed breach of this warranty or transactions under this warranty may be brought more than two (2) years after the cause of action has occurred.

### 4. Miscellaneous

- 4.01. Proper venue for any lawsuits arising from or related to this limited warranty shall be only in Guadalupe county, Texas.
- 4.02. Manufacturer may waive compliance with any of the terms of this limited warranty, but no waiver of any terms shall be deemed to be a waiver of any other term.
- 4.03. If any provision of this limited warranty shall violate any applicable law and is held to be unenforceable, then the invalidity of such provision shall not invalidate any other provisions herein.
- 4.04. Applicable law may provide rights and benefits to purchaser in addition to those provided herein.

*Keep for your records*

Attention: Purchaser should fill in the blanks below for his reference when buying repair parts and/or for proper machine identification when applying for warranty.

Alamo Industrial Implement Model \_\_\_\_\_ Serial Number \_\_\_\_\_  
Date Purchased \_\_\_\_\_ Dealer \_\_\_\_\_

Attention:  
Read your operator's manual



**ALAMO INDUSTRIAL**  
1502 E. Walnut  
Seguin, Texas 78155  
830-379-1480



## TO THE OWNER/OPERATOR/DEALER

To keep your implement running efficiently and safely, read your manuals thoroughly and follow these directions and the Safety Messages in this Manual. The Table of Contents clearly identifies each section where you can easily find the information you need.

The OCCUPATIONAL SAFETY AND HEALTH ACT (1928.51 Subpart C) makes these minimum safety requirements of tractor operators:

### REQUIRED OF THE OWNER

1. Provide a Roll-Over-Protective Structure that meets the requirements of this standard.
2. Provide seat belts that meet the requirements of this paragraph of this standard and SAE J4C.
3. Ensure that each employee uses such seat belt while the tractor is moving.
4. Ensure that each employee tightens the seat belt sufficiently to confine the employee to the protected area provided by the ROPS.

### REQUIRED OF THE OPERATOR

1. Securely fasten seat belt if the tractor has a ROPS.
2. Where possible, avoid operating the tractor near ditches, embankments, and holes.
3. Reduce speed when turning, crossing slopes, and on rough, slick, or muddy surfaces.
4. Stay off slopes too steep for safe operation.
5. Watch where you are going, especially at row ends, on roads, and around trees.
6. Do not permit others to ride.
7. Operate the tractor smoothly, no jerky turns, starts, or stops.
8. Hitch only to the draw bar and hitch points recommended by the tractor manufacturer.
9. When the tractor is stopped, set brakes securely and use park lock, if available.



**Keep children away from danger all day, every day...**



**Equip tractors with rollover protection (ROPS) and keep all machinery guards in place...**



**Please work, drive, play and live each day with care and concern for your safety and that of your family and fellow citizens.**



**BUILT SHARPER®**

An Alamo Group Company

1502 E. Walnut St.  
Seguin, Texas 78155



## **Sales and Marketing**

Tel 800.882.5762      Fax 830.379.0864  
support@alamo-industrial.com

## **Warranty Registration/Claims**

[www.alamoparts.com](http://www.alamoparts.com)

## **Return Authorizations**

Online Part Orders  
Techical Information  
[www.alamoparts.com](http://www.alamoparts.com)  
Tel 800.356.6286      Fax 800.322.5141  
[www.alamo-industrial.com](http://www.alamo-industrial.com)

