

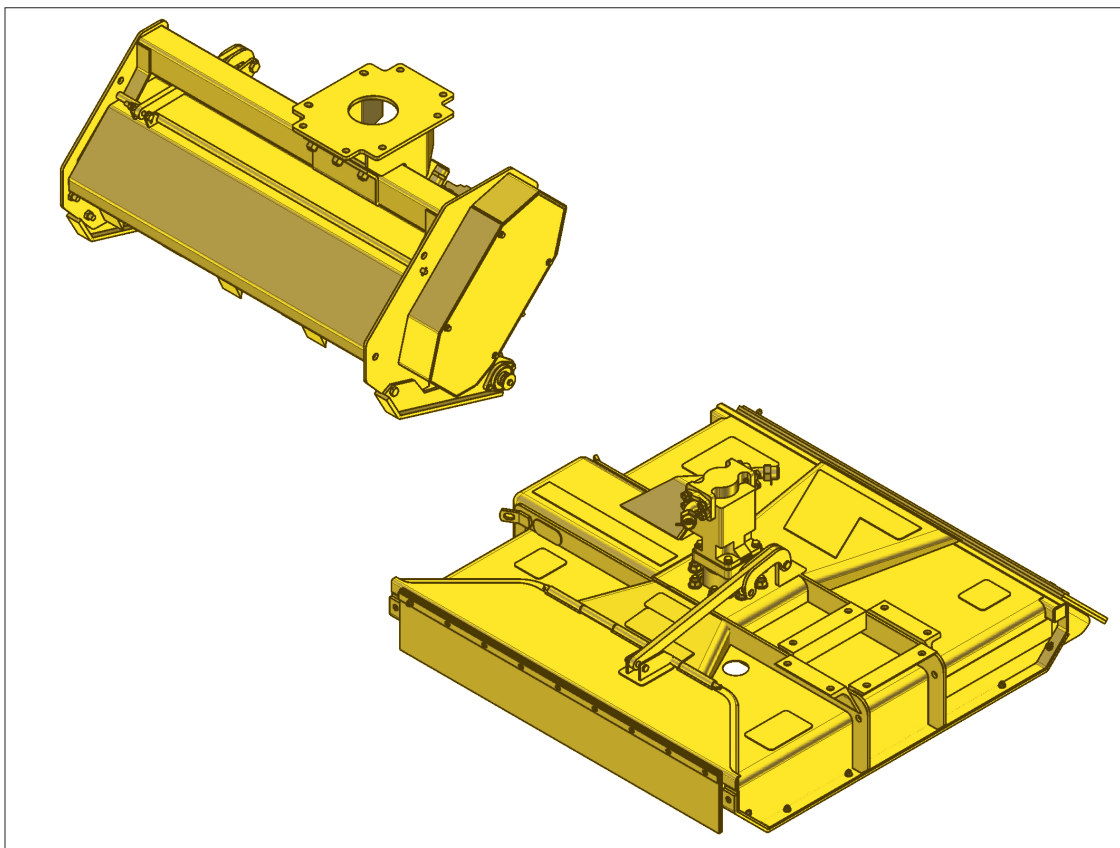


Gradall XL3000
Gradall XL4000
Gradall XL5000
50 & 60 Rotary / 48 Flail

Rev 08-14

Part No. 02985519P

PARTS MANUAL



ALAMO INDUSTRIAL

1502 E. Walnut
Seguin, Texas 78155
830-372-9595

¡ATENCIÓN!

LEA EL INSTRUCTIVO

Si No Lee Ingles, Pida Ayuda a Alguien
Que Si Lo Lea Para Que le Traduzca las
Medidas de Seguridad.



An Operator's Manual was shipped with the equipment in the Manual Canister. This Operator's Manual is an integral part of the safe operation of this machine and must be maintained with the unit at all times. READ, UNDERSTAND, and FOLLOW the Safety and Operation Instructions contained in this manual before operating the equipment. If the Operator's Manual is not with the equipment, contact your dealer or Alamo Industrial (800-356-6286) to obtain a Free copy before operating the equipment.

BOLT TORQUE

Mounting procedures for mowers will require a significant amount of bolt nut and washer installation.

Frame and structure mounting bolts should be installed using *Red Loctite*, and torqued to the dry values listed in the torque chart based on the bolt size and hardness.

Other structures such as pump mounting bolts should be installed with *Blue Loctite* and torqued to the dry values indicated in the chart.

Bolt tightness should be completed with and checked with a suitable torque wrench.

Torque checks should be completed throughout the life of the mower in accordance with the maintenance chart provided in this manual.



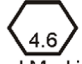

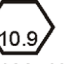

Loose bolts on a frame or in a casting may be a result of:

- Vibration from the mower due to imbalance of the mower blades
- Pulled threads due to over tightening
- Distortion of the hole due to under tightening during installation

Bolts broken or sheared in the mounting structure or tractor may be the result of:

- Improper alignment of the Mounting Plate or Structure such that it is not sitting flat on the mating surface
- Distortion of the bolt due to over-tightening
- Under tightening of the bolts

Check the bolt torque during installation and prior to delivery with a suitable torque wrench.

Proper Torque Values for Standard Bolts			Proper Torque Values for Metric Bolts				
Bolt Diameter			Bolt Diameter				
	Head Marking Three Lines Grade Five	Head Marking Six Lines Grade Eight		Head Marking 4.6	Head Marking 8.8 or 9.8	Head Marking 10.9	Head Marking 12.9
	Pound - Foot Value Dry	Pound - Foot Value Dry		Pound - Foot Value Dry	Pound - Foot Value Dry	Pound - Foot Value Dry	Pound - Foot Value Dry
1/4"	7	10	6mm	3	7	9	10
5/16"	15	22	8mm	6.2	16	23	24
3/8"	26	39	10mm	12	32	45	47
7/16"	42	60	12mm	21	55	79	81
1/2"	64	88	14mm	34	88	126	130
9/16"	100	134	16mm	53	137	196	202
5/8"	128	180	18mm	73	189	270	279
3/4"	227	320	20mm	104	267	382	394
7/8"	365	515	22mm	141	364	520	537
1"	547	772	24mm	179	461	660	680
			27mm	262	676	968	998
			30mm	355	917	1312	1353

To get Newton-Meters multiply pound-foot of torque by 1.356

TO THE OWNER/OPERATOR/DEALER

All implements with moving parts are potentially hazardous. There is no substitute for a cautious, safe-minded operator who recognizes the potential hazards and follows reasonable safety practices. The manufacturer has designed this implement to be used with all its safety equipment properly attached to minimize the chance of accidents.

BEFORE YOU START!! Read the safety messages on the implement and shown in your manual.
Observe the rules of safety and common sense!



DANGER

FAILING TO FOLLOW SAFETY MESSAGES AND OPERATING INSTRUCTION CAN CAUSE SERIOUS BODILY INJURY OR EVEN DEATH TO OPERATOR AND OTHERS IN THE AREA.

1. 	2. NO RIDERS. NO CHILDREN OPERATORS. 	3. USE SAFETY SHOES, HARD HAT, SAFETY GLASSES, SEAT BELTS, ROPS & OPS. 	4. BLOCK UP SECURELY BEFORE WORKING UNDER. 
---	---	--	---

1. Study and understand Operator's Manuals, Safety Decals, and Instructional Decals for tractor and implement to prevent misuse, abuse, and accidents. Practice before operating in a confined area or near passersby.
• Learn how to stop engine suddenly in an emergency. Be alert for passersby and especially children.

2. Allow no children on or near folding mower or tractor. Allow no riders on tractor or implement. Falling off may cause serious injury or death from being run over by tractor or mower or contact with rotating blades.

3. Operate only with tractor having Roll-Over Protective Structure (ROPS) and with seat belt securely fastened to prevent injury and possible death from falling off or tractor overturn.
• Personal Protective Equipment such as Hard Hat, Safety Glasses, Safety Shoes, & Ear Plugs are recommended.

4. Block up or support raised machine and all lifted components securely before putting hands or feet under or working underneath any lifted component to prevent crushing injury or death from sudden dropping or inadvertent operation of controls. Make certain area is clear before lowering or folding.

5. Before transporting, put Lift Lever in detent or full-lift position. Install Transport Safety Devices securely on folding mowers. Put Booms securely in Transport Rest.
• Folding and Boom Mowers have raised center of gravity. Slow down when turning and on hillsides.

6. Make certain that SMV sign, warning lights, and reflectors are clearly visible. Follow local traffic codes.

7. Never operate with Cutting Head or Folding Section raised if passersby, bystanders, or traffic are in the area to reduce possibility of injury or death from objects thrown by Blades under Guards or mower structure.

8. Before dismounting, secure implement in transport position or lower to ground.
• Put tractor in park or set brake, disengage PTO, stop engine, remove key, and wait until noise of rotation has ceased to prevent crushing by entanglement in rotating parts which could cause injury or death.
• Never mount or dismount a moving vehicle. Crushing from runover may cause serious injury or death.

5. TRANSPORT SAFELY, LOCK UP. 	6. USE SMV, LIGHTS, & REFLECTORS. 	7. DO NOT OPERATE WITH CUTTER OR WING RAISED 	8. DO NOT MOUNT OR DISMOUNT WHILE MOVING. 
--	--	--	--

02967827

WARRANTY INFORMATION:

Read and understand the complete Warranty Statement found in this Manual. Fill out the Warranty Registration Form in full and return it within 30 Days. Make certain the Serial Number of the Machine is recorded on the Warranty Card and on the Warranty Form that you retain. The use of "will-fit" parts will void your warranty and can cause catastrophic failure with possible injury or death.

CHANGE PAGES

[illegible]

CHANGE PAGES

The following is a listing of pages that have been changed since the latest publication date for the overall document.

PARTS ORDERING GUIDE

The following instructions are offered to help eliminate needless delay and error in processing purchase orders for the equipment in this section.

1. The Parts Section is prepared in logical sequence and grouping of parts that belong to the basic machine featured in this manual. Part Numbers and Descriptions are given to help locate the parts and quantities required.
2. The Purchase Order must include the name and address of the person or organization ordering the parts, who should be charged, and if possible, the serial number of the machine for which the parts are ordered.
3. The Purchase Order must clearly list the quantity of each part, the complete and correct part number (be sure to include all periods), and the basic name of the part.
4. The Manufacturer reserves the right to substitute parts where applicable.
5. Some parts are unlisted items which are special production items not normally stocked and are subject to special handling. Request a quotation for such parts before sending a Purchase Order.
6. The Manufacturer reserves the right to change prices without prior notice.

Note: *Please refer to The Safety Section in the front of this Manual for the proper part number when ordering replacement safety decals.*



For maximum safety and to guarantee optimum product reliability, always use genuine Alamo Industrial Parts. The use of inferior replacement parts may cause premature or catastrophic failure which could result in serious injury or death. Direct any questions regarding parts to:



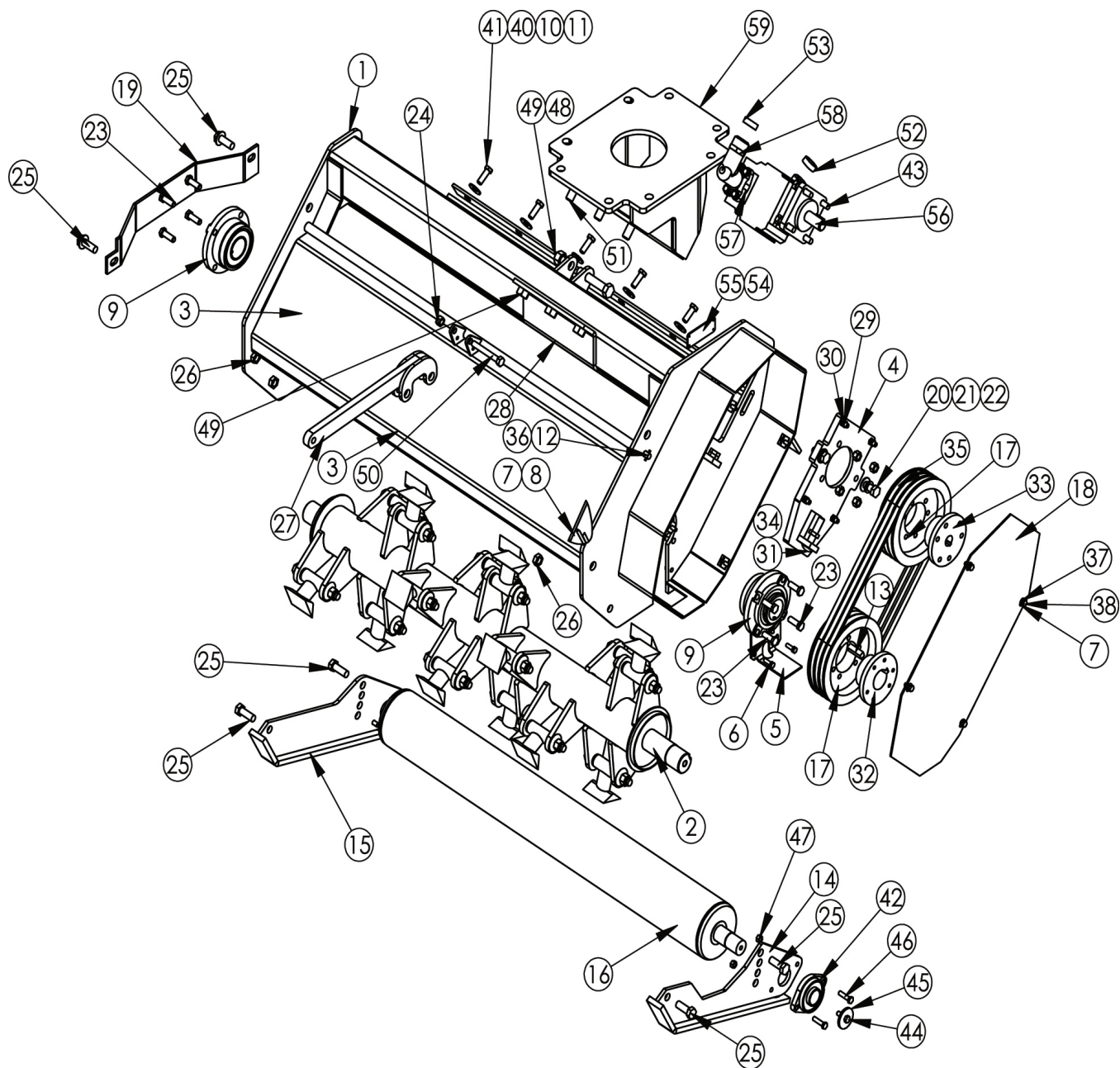
ALAMO INDUSTRIAL

1502 E. Walnut
Seguin, Texas 78155
830-379-1480

PART NAME INDEX

48 IN FLAIL - ASSEMBLY (PART 1) SN FA48 10746 TO CURRENT.....	4
48 IN FLAIL - ASSEMBLY (PART 2) SN FA48 10746 TO CURRENT.....	6
48 IN FLAIL - ASSEMBLY (PART 1).....	8
48 IN FLAIL - ASSEMBLY (PART 2).....	10
48 IN FLAIL - ROTOR W/KNIVES.....	12
48 IN FLAIL - MOTOR PARTS.....	14
50 IN AND 60 IN ROTARY - MOTOR PARTS.....	15
50 IN ROTARY - ASSEMBLY.....	16
50 IN ROTARY - SUB ASSEMBLY.....	18
50 IN ROTARY - BLADE BAR ASY.....	20
60 IN ROTARY - ASSEMBLY.....	22
60 IN ROTARY - SUB ASSEMBLY.....	24
60 IN ROTARY - BLADE BAR ASY.....	26

48 IN FLAIL - ASSEMBLY (PART 1) SN FA48 10746 TO CURRENT



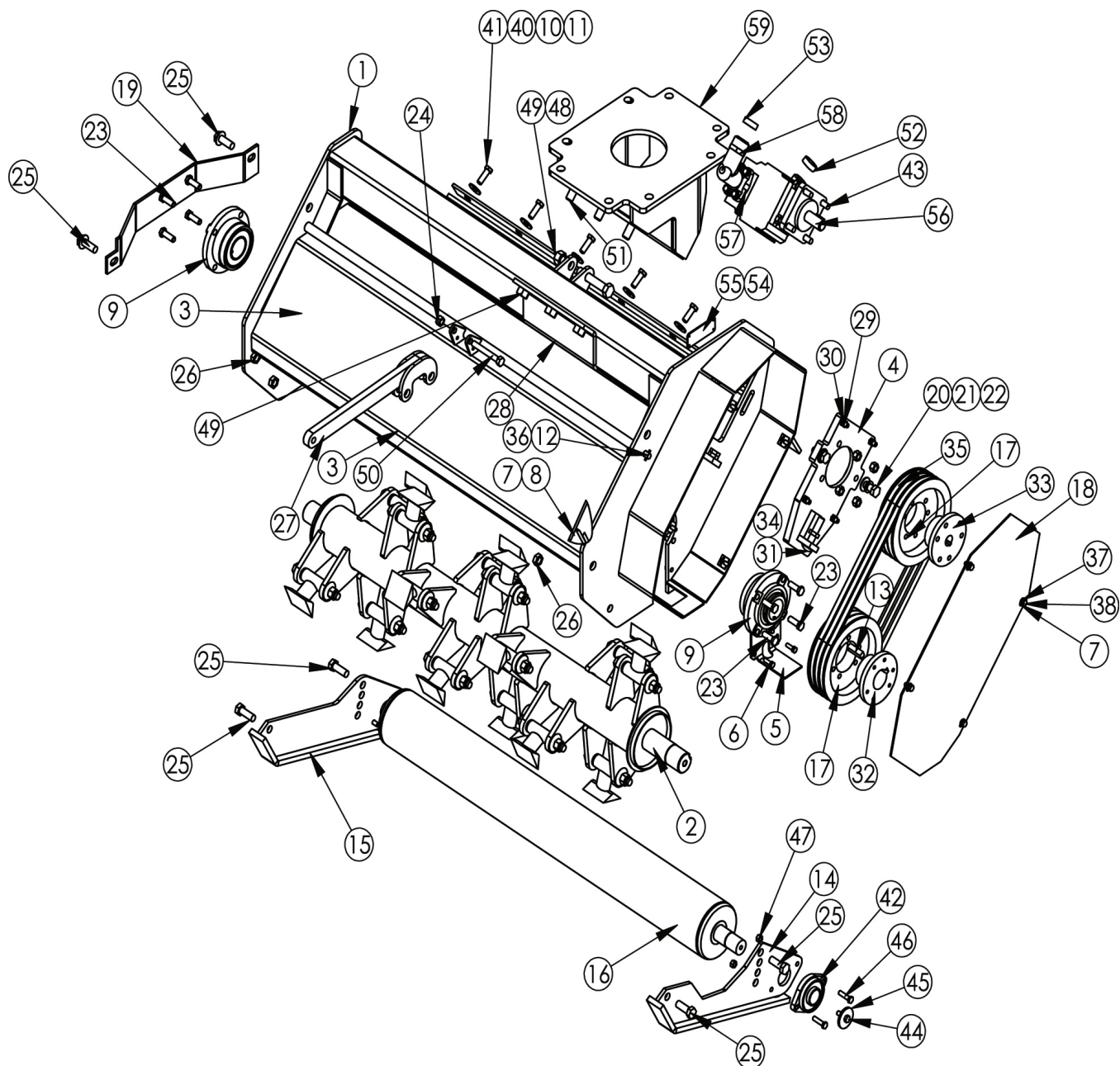
ITEM	PART NO.	QTY.	DESCRIPTION
1	02994073	1	WLDMNT, HOUSING, F/AXE 48"
2	02957655M	1	ROTOR W/KNIVES (FLAIL AXE)
3	02994074	1	WLDMNT, DOOR, F/AXE 48"
4	02973544	1	WLDMT MOTOR MOUNTS
5	02970709	1	PLATE,INSIDE PLATE
6	10119000	2	HEXB 5/16 X 1 NC GR5
7	00023500	6	FLATWASHER 5/16 PL
8	00750940	2	LOCKNUT TLM 5/16 NC PLB

48 IN FLAIL - ASSEMBLY (PART 1) SN FA48 10746 TO CURRENT

Continued...

ITEM	PART NO.	QTY.	DESCRIPTION
9	02958131A	2	FLANGE BEARING ASY 2 BORE
10	02956714	1	CLAMP BAR
11	02956712	1	RUBBER FLAP 6 X 48-1/2
12	02970326	1	ROD,HINGE,F/A DOOR
13	02958198	1	KEY 1/2 X 1/2 X 1 7/8LG
14	02970585	1	WELDMENT,SKID SHOE
15	02956748	1	WLDMT, SKID SHOE
16	02970540	1	WELDMENT,ROLLER
17	02967325	2	PULLEY, 3G5V-8.50 DIA.
18	02970325	1	PLATE,COVER,BELT & PULLEY
19	02972442	1	GUARD,BEARING
20	02675800	2	HHCS 5/8-11 X 1-1/2 PL5
21	00010300	2	WASHER,LOCK 5/8 GR8 - YDP
22	00001400	4	FLATWASHER 5/8 PL STD
23	02892000	8	HHCS, 1/2"-13 NC x 1-1/2" PL8
24	00001800	13	LOCKNUT TLM 1/2 NC PLC
25	00008300	6	HHCS 5/8 NC 1-3/4 PL5
26	00695100	5	NUT,TOBLOCK 5/8 NC PLC
27	02986101	1	WLDMT, BAR, LINK, DOOR
28	02970324	1	PLATE,HITCH POST CLAMP
29	02970583	4	SHSS 3/8-NF X 1-1/2 PL5
30	23504500	8	NUT, JAM 3/8 NF PLB
31	03200925	1	CARB 5/8-11UNC 3LG PL5
32	02967328	1	BUSHING,QD-HUB SF 1-15/16 DIA.
33	02970537	1	HUB,QD-SF 1DIA.BORE W/KEY WAY
34	00013500	3	NUT JAM HEX 5/8 NC PL
35	02970539	3	V-BELT
36	02956768	2	PIN ROLL 5/32X1
37	00011700	4	HIGH ALLOY, L/W 5/16 YZ KG
38	00035900	4	HHCS,5/16-18 X 3/4 PL5
39	000642	7	NUT,1/2NF CENTERLOCK
40	00002700	7	FLATWASHER 1/2 PL STD

48 IN FLAIL - ASSEMBLY (PART 2) SN FA48 10746 TO CURRENT

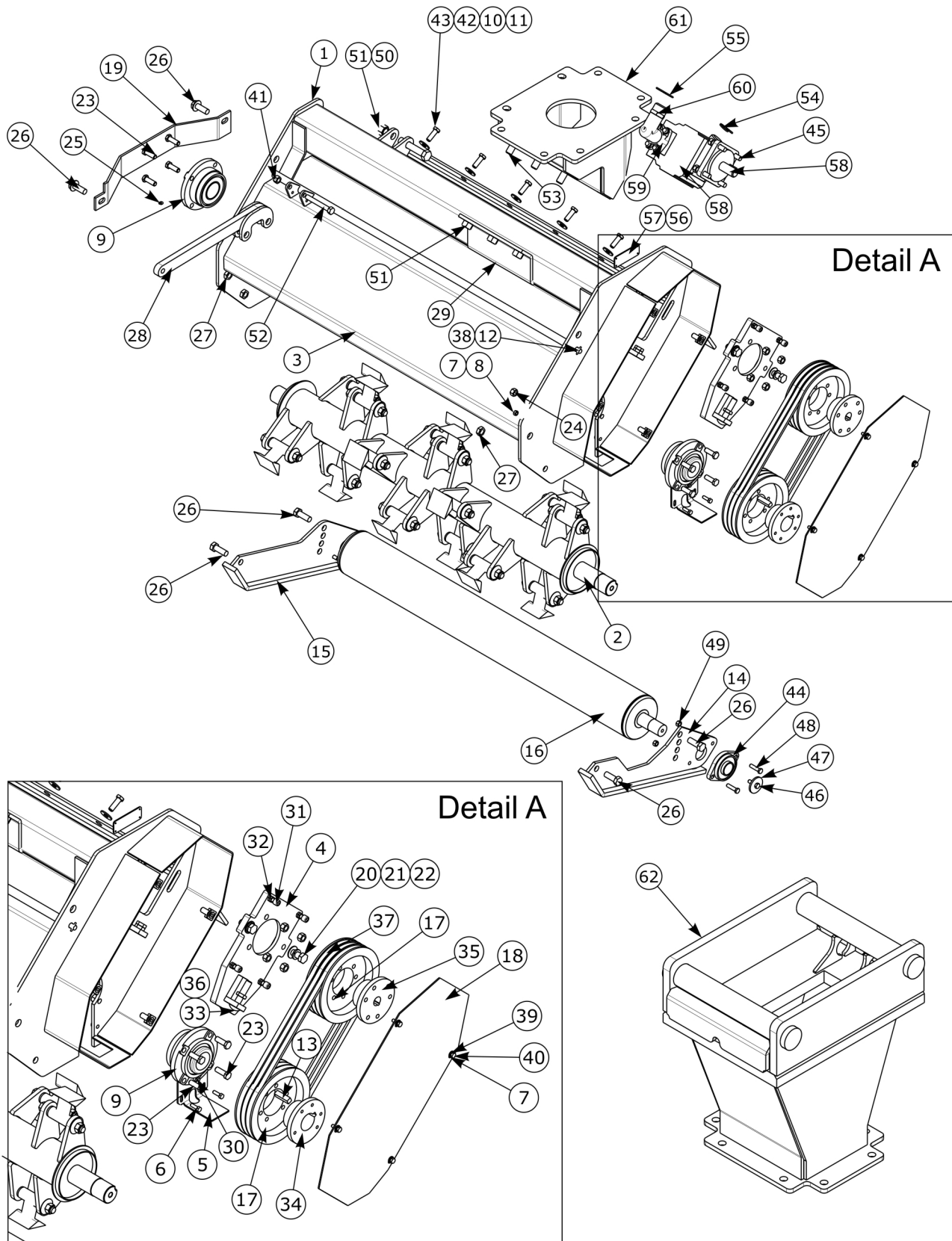


ITEM	PART NO.	QTY.	DESCRIPTION
41	00019300	7	HHCS 1/2 NF 1-1/2 PL5
42	02957041	2	ROLLER BEARING AND FLANGE
43	00013300	4	HHCS 1/2 NC X 2 GR.5 PL
44	02972949	2	BOLT 3/8 NC GR8 X 1-1/4
45	02970586	2	WASHER,2OD,7/16 ID X 3/16
46	02977955	4	HHCS 3/8 NC 1-1/2 PL8
47	00015800	4	LOCKNUT TLM 3/8-NC PLC
48	00003300	1	HEXB 3/4 NC 4 PL5

48 IN FLAIL - ASSEMBLY (PART 2) SN FA48 10746 TO CURRENT**Continued...**

ITEM	PART NO.	QTY.	DESCRIPTION
49	00037200	7	NUT,HEX TOPLOCK 3/4 NC GR.C PL
50	00008200	1	HEXB 1/2NC X 3-3/4 PL5
51	02918600	6	HEXB 3/4-10UNC 2 PL8
52	02968896	1	VINYL TAPE BLUE 1/2" WIDE
53	02968894	1	VINYL TAPE RED 1/2" WIDE
54	3710151	4	METAL TACK
55	02971498	1	PLATE,S/N 48 FLAIL AXE
56	02987315	1	MOTOR, GEAR 3.0 CU/IN F/A
57	00749103	2	SPLIT FLG KIT #20
58	02961280	2	ADP HYD ELBOW 20FL-20MJ90
59	02985433	1	WLDMT, FA HITCHPOST ADP

48 IN FLAIL - ASSEMBLY (PART 1)



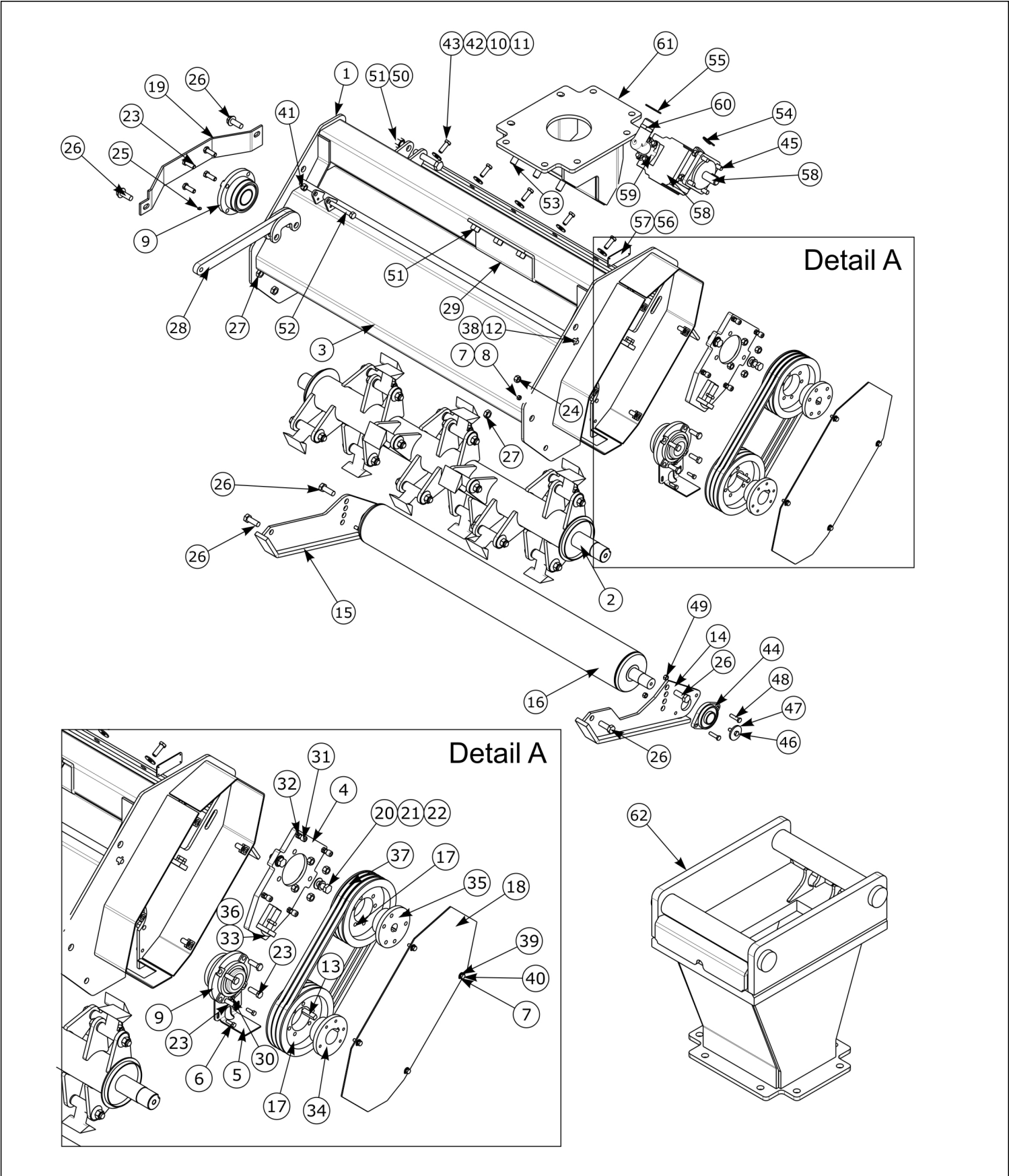
48 IN FLAIL - ASSEMBLY (PART 1)

Continued...

ITEM	PART NO.	QTY.	DESCRIPTION
	02986100	1	ASY 48" FLAIL AXE, GEAR,GRADALL
1	02970301	1	WLDMT, FLAIL AXE HEAD
2	02957655M	1	ASY, CUTTERSHAFT, 48" F/A
3	02970465	1	WLDMT DOOR, 48" FLAIL AXE
4	02973544	1	WLDMT, MOTOR MOUNT
5	02970709	1	PLATE, COVER FLAIL AXE
6	10119000	2	HHCS 5/16 NC 1 PL5
7	00023500	6	FLATWASHER 5/16, TYPE AW, ZP
8	00750940	2	NUT, TOPLOCK 5/16 NC PL B
9	02958131A	2	FLANG BEARING ASY
10	02956714	1	CLAMP BAR
11	02956712	1	RUBBER FLAP
12	02970326	1	ROD-HINGE, F/A DOOR
13	02958198	1	1/2 X 1/2 X 1 7/8 LG
14	02970585	1	WLDM SKIDSHOE INSIDE FLAIL AXE
15	02956748	1	SKID SHOE WLDMT
16	02970540	1	WLDMT - REAR ROLLER
17	02967325	2	PULLEY, 3G5V - 8.50 DIA
18	02970325	1	PLATE-BELT & PULLEY COVER
19	02972442	1	FLAIL AXE BEARING GUARD
20	02675800	2	HHCS 5/8 X 1-1/2 PL GR5
21	00010300	2	LOCKWASHER 5/8
22	00001400	4	FLATWASHER 5/8 PL STD
23	02892000	8	HHCS, 1/2"-13 NC x 1-1/2" PL8
24	00001800	8	LOCKNUT TLM 1/2 NC PLC
25	00752670	1	GREASE FITTING 1/4-28 BOLT THD
26	00008300	6	BOLT, HHCS 5/8" NC X 1-3/4" PL5
27	00695100	5	NUT, TOPLOCK 5/8 NC PLC
28	02986101	1	BAR, LINK, DOOR
29	02970324	1	PLATE-CLAMP, HITCHPOST
30	000941	1	GREASE ZERK 1/4-28 90 BOLT THD
31	02970583	4	SHCS 3/8 NF 1-1/2 PL GR5
32	23504500	8	JAMNUT 3/8 NF
33	03200925	1	CARR 5/8 NC X 3 PL GR5
34	02967328	1	BUSHIN, QD HUB SF 1-15/16 ID
35	02970537	1	BUSHING, QD HUB SF 1 ID
36	00013500	3	NUT, 3/8 NC JAMNUT
37	02970539	3	V BELT
38	02956768	2	PIN, ROLL 5/32X1
39	00011700	4	LOCKWASHER 5/16 PL STD
40	00035900	4	HHCS 5/16 NC X 3/4 GR5

02985519P - Gradall Cutters (03-10)_08-14

48 IN FLAIL - ASSEMBLY (PART 2)

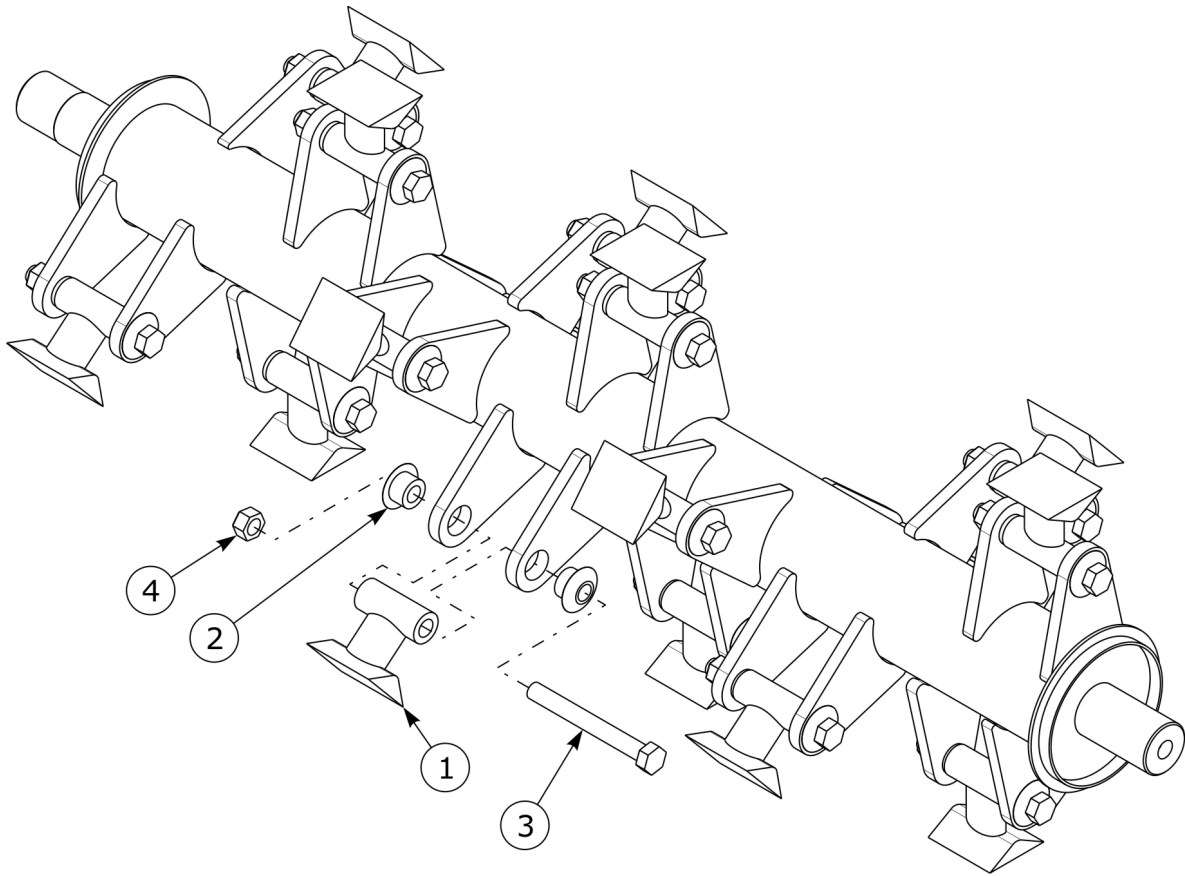


48 IN FLAIL - ASSEMBLY (PART 2)

Continued...

ITEM	PART NO.	QTY.	DESCRIPTION
41	000642	12	NUT,1/2NF CENTERLOCK
42	00002700	7	FLATWASHER, 1/2 PL STD
43	00019300	7	HHCS 1/2 NF 1-1/2 PL5
44	02957041	2	ROLLER BEARING & FLANGE
45	00013300	4	BOLT, HHCS 1/2" NC X 2" PL5
46	02972949	2	BOLT 3/8 NC GR8 X 1-1/4
47	02970586	2	WASHER, 2 X 7/16 X 3/16
48	02977955	4	HHCS 3/8 NC 1-1/2 PL8
49	00015800	4	LOCKNUT TLM 3/8 NC PLC
50	00003300	1	HHCS 3/4" X 4" LG
51	00037200	7	NUT 3/4 NC LOCKNUT
52	00008200	1	BOLT, HHCS 1/2" NC X 3-3/4" PL5
53	02918600	6	HHCS 3/4 NC 2 PL8
54	02968896	1	VINYL TAPE BLUE 1/2" WIDE
55	02968894	1	VINYL TAPE RED 1/2" WIDE
56	----NFS----	4	METAL TACK
57	----NFS----	1	PLATE, S/N FLAIL AXE 48
58	02987315	1	GEAR MOTOR
59	00749103	2	#20 SPLIT FLANGE KIT
60	02961280	2	ADP,HYD 20FL-20MJ-90
61	02985433	1	WLDMT,FA HITCHPOST ADP
62	80456075	1	XL SERIES III HITCH

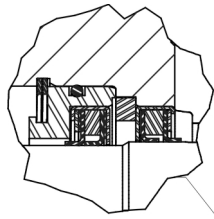
48 IN FLAIL - ROTOR W/KNIVES



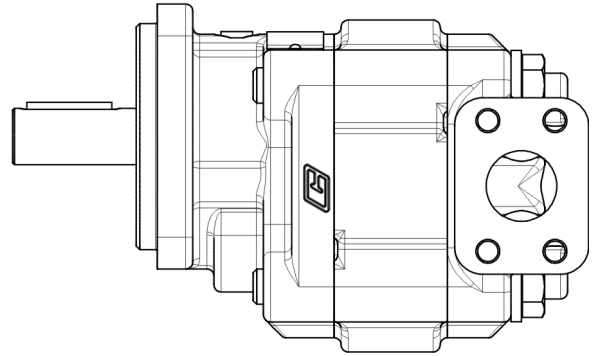
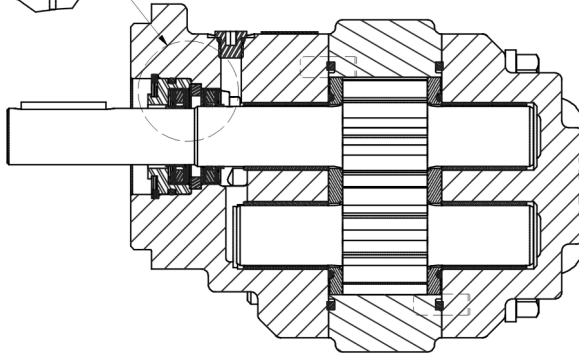
ITEM	PART NO.	QTY.	DESCRIPTION
0	02957655M	1	ROTOR W/KNIVES ASY
1	02958540	1	KIT - BLADE, FLAIL AXE
2	02956943	32	FLAIL HANGER BUSHING
3	02956949	16	HHCS HANGER BOLT PER DWG
4	02980976	16	LOCKNUT,CENTERLOCK 5/8 NC PLC

THIS PAGE INTENTIONALLY LEFT BLANK

48 IN FLAIL - MOTOR PARTS

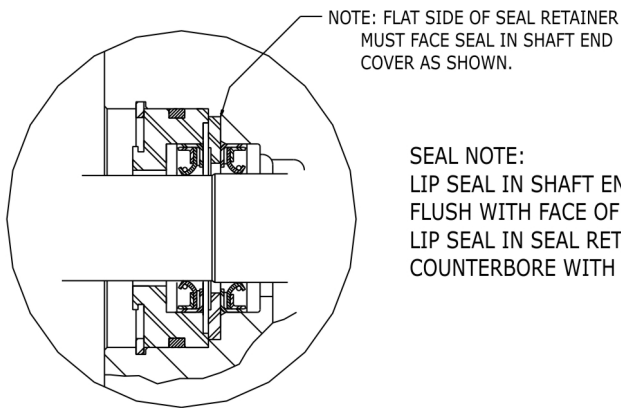


SEAL NOTE: LIP SEAL IN SHAFT END COVER MUST BE PRESSED FLUSH WITH FACE OF RECESS WITH THE LIP TOWARD GEAR AS SHOWN. LIP SEAL IN SEAL RETAINER MUST BE FLUSH WITH COUNTERBORE WITH LIP AWAY FROM GEAR AS SHOWN.

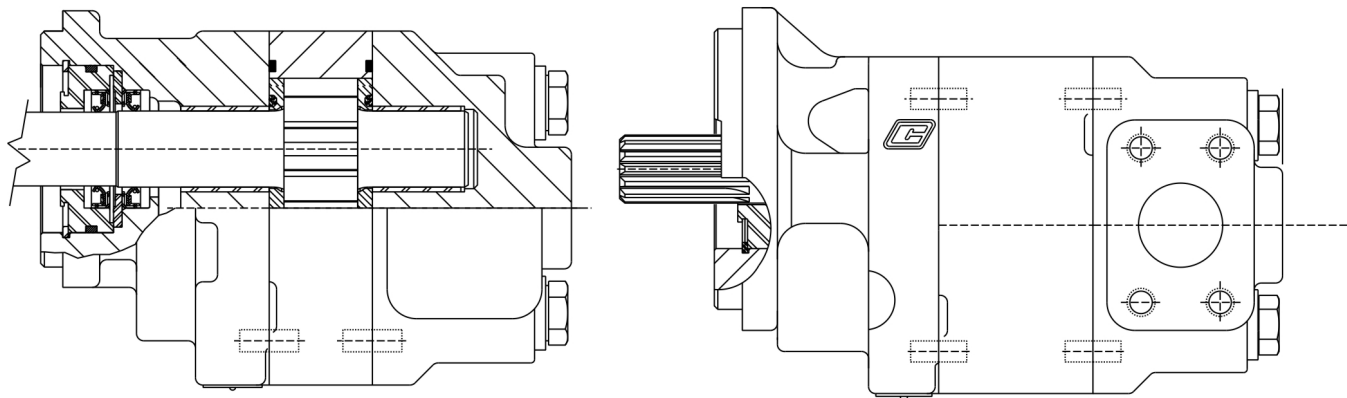


ITEM	PART NO.	QTY.	DESCRIPTION
	02988473	1	KIT, SEAL, CMPLT, MOTOR 3.0 CU

50 IN AND 60 IN ROTARY - MOTOR PARTS

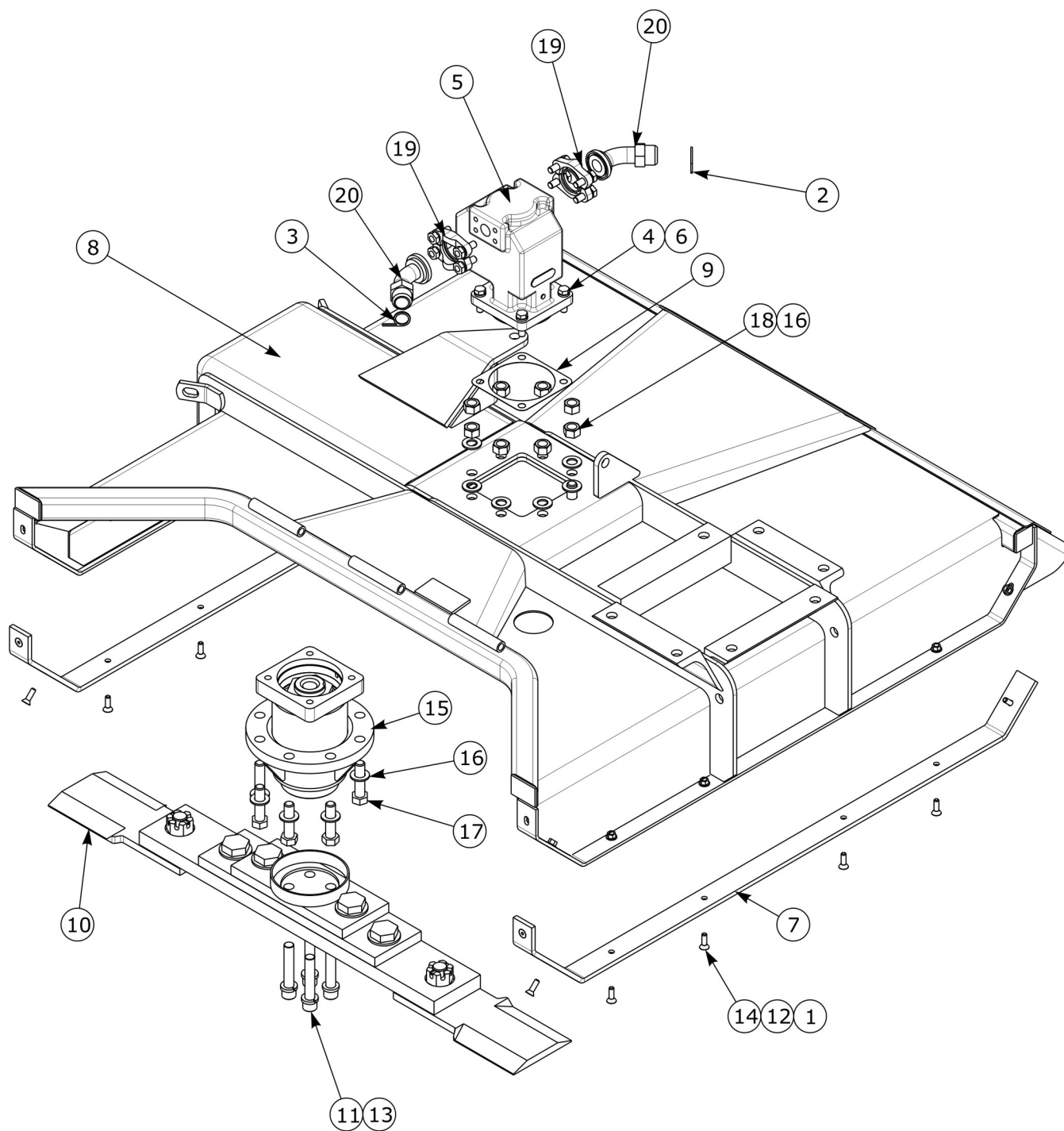


SEAL NOTE:
LIP SEAL IN SHAFT END COVER MUST BE PRESSED FLUSH WITH FACE OF RECESS WITH LIP TOWARD GEAR AS SHOWN.
LIP SEAL IN SEAL RETAINER MUST BE FLUSH WITH COUNTERBORE WITH LIP AWAY FROM GEAR AS SHOWN.



ITEM	PART NO.	QTY.	DESCRIPTION
	02962538	1	KIT-SEAL-MINOR REBUILD

50 IN ROTARY - ASSEMBLY

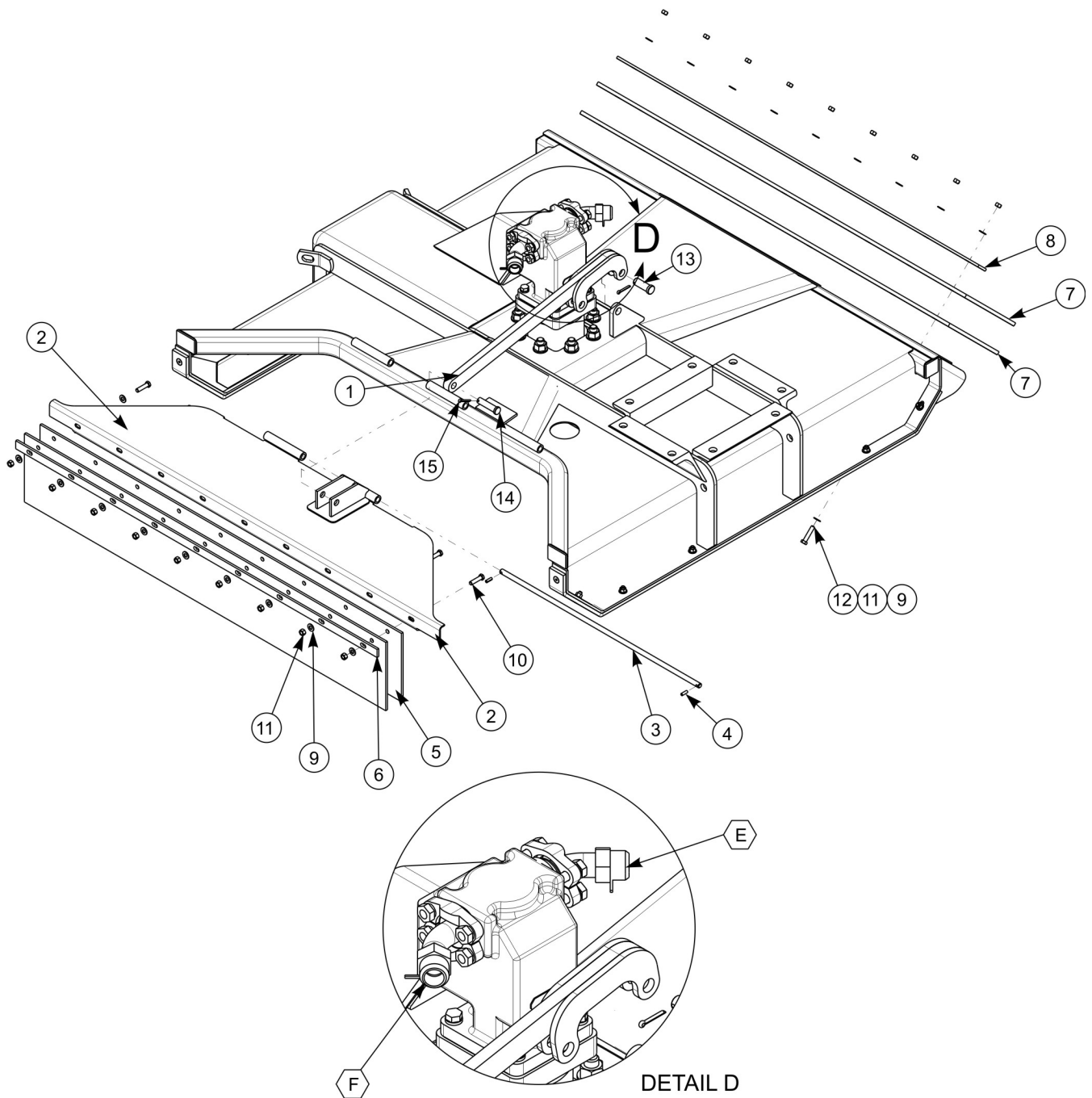


50 IN ROTARY - ASSEMBLY

Continued...

ITEM	PART NO.	QTY.	DESCRIPTION
	02986098	1	ASSEMBLY, 50" ROTARY, AX TREME GRADALL
1	00015800	32	LOCKNUT TLM 3/8 NC PLC
2	02968894	1	VINYL TAPE RED 1/2" WIDE
3	02968896	1	VINYL TAPE BLUE 1/2" WIDE
4	02891800	4	HHCS 1/2 NC 1-3/4 PL8
5	02989904	1	HYD GEAR MOTOR 5.73 CID
6	00019600	4	LOCKWASHER 1/2 HEAVY
7	02982907	2	SKID SHOE
8	02981411	1	WELDMENT, DECK 50" HEAD
9	02961038	1	GASKET
10	02982906	1	ASY, BLADE BAR W/BLADES
11	02964861	4	SHCS 3/4 NC 4" LG PL8
12	15B600	14	WASHER 3/8 SAE P
13	00003901	4	LOCKWASHER 3/4 HEAVY
14	00059700	14	FSCS 3/8 NC X 1-1/4
15	02968859A	1	ASSEMBLY, SPINDLE HOUSING-SPLINED
16	5312316	16	FLATWASHER 3/4 HARDENED
17	03200269	8	HHCS 3/4 NC 3 PL8
18	00037200	8	NUT 3/4 NC LOCKNUT
19	00749101	2	SPLIT FLANGE KIT #24
20	02962774	2	ADP HYD ELBOW 24FL - 20MJ - 45
21	80456075	1	XL SERIES III HITCH

50 IN ROTARY - SUB ASSEMBLY



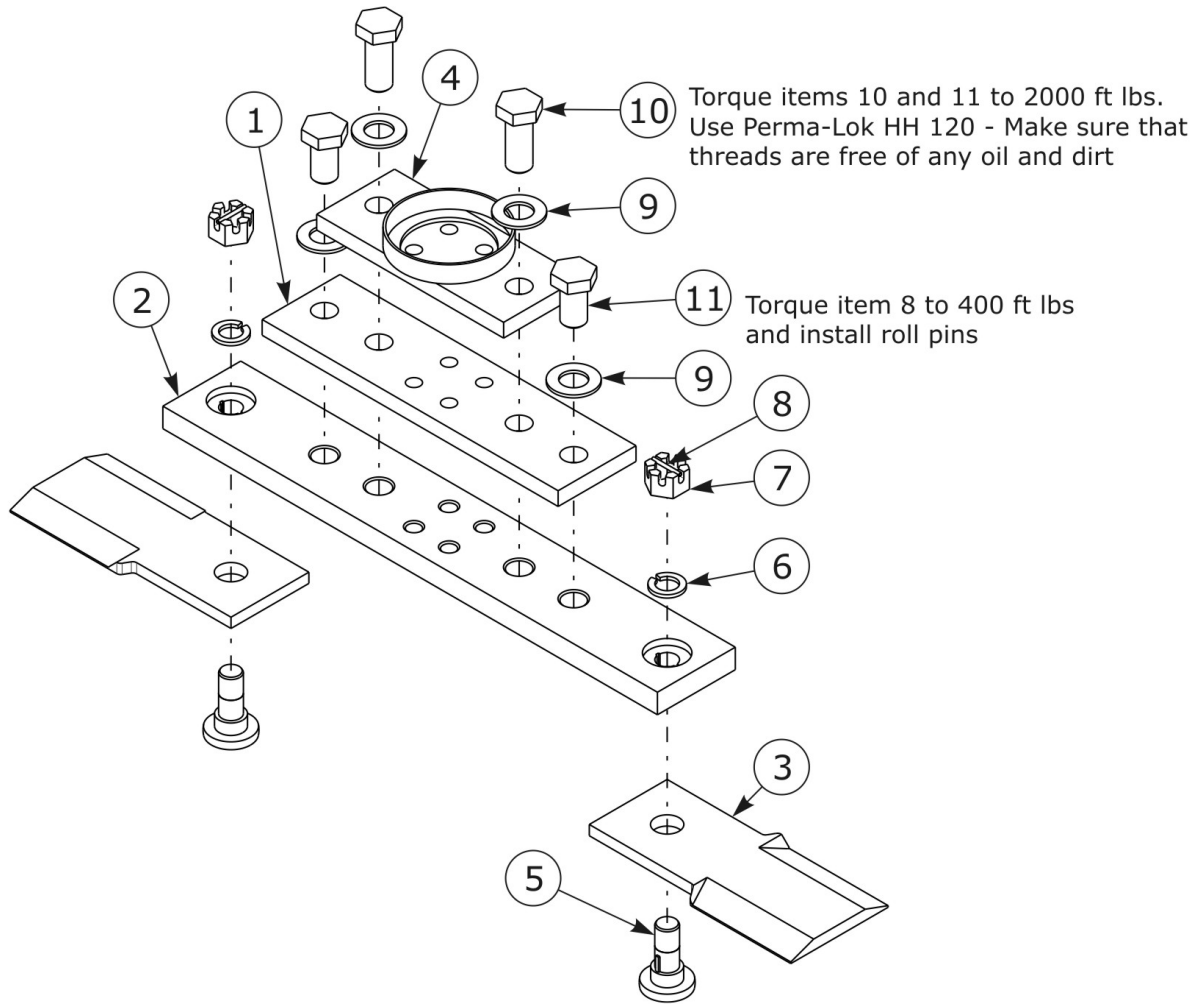
Hose Part Number	Description	Connection
02968874	Motor Pressure (Red)	E
02968875	Motor Return (Orange)	F

50 IN ROTARY - SUB ASSEMBLY

Continued...

ITEM	PART NO.	QTY.	DESCRIPTION
1	02985574	1	BAR, LINK, DOOR
2	02982914	1	WELDMENT, DOOR
3	02982915	1	ROD, HINGE
4	99338S	2	PIN ROLL 1/4 X 3/4
5	02982919	2	FLAP, 8 1/2 X 52 X 1/4 THK
6	02982918	1	BAR, HOLD DOWN, FLAP
7	02982920	2	FLAP, REAR 10 X 53 X 3/8 THK
8	02982921	1	BAR, CLAMP, REAR
9	00011100	36	FLATWASHER 3/8 STD
10	00023100	9	HHCS 3/8 X 1-1/2 NC PL GR5
11	00015800	32	LOCKNUT TLM 3/8 NC PLC
12	00007000	9	HHCS 3/8 NC 1-3/4 PL5
13	651102	1	PIN-DRILLED
14	02976448	1	PIN - MACHINED HEAD
15	00755153	2	PIN, COTTER 3/16 X 1-1/2 PL
	02968874	1	HOSE #16-16FJX-16FJX-60LG (RED)
	02968875	1	HOSE #16-16FJX-16FJX45-68LG (ORANGE)

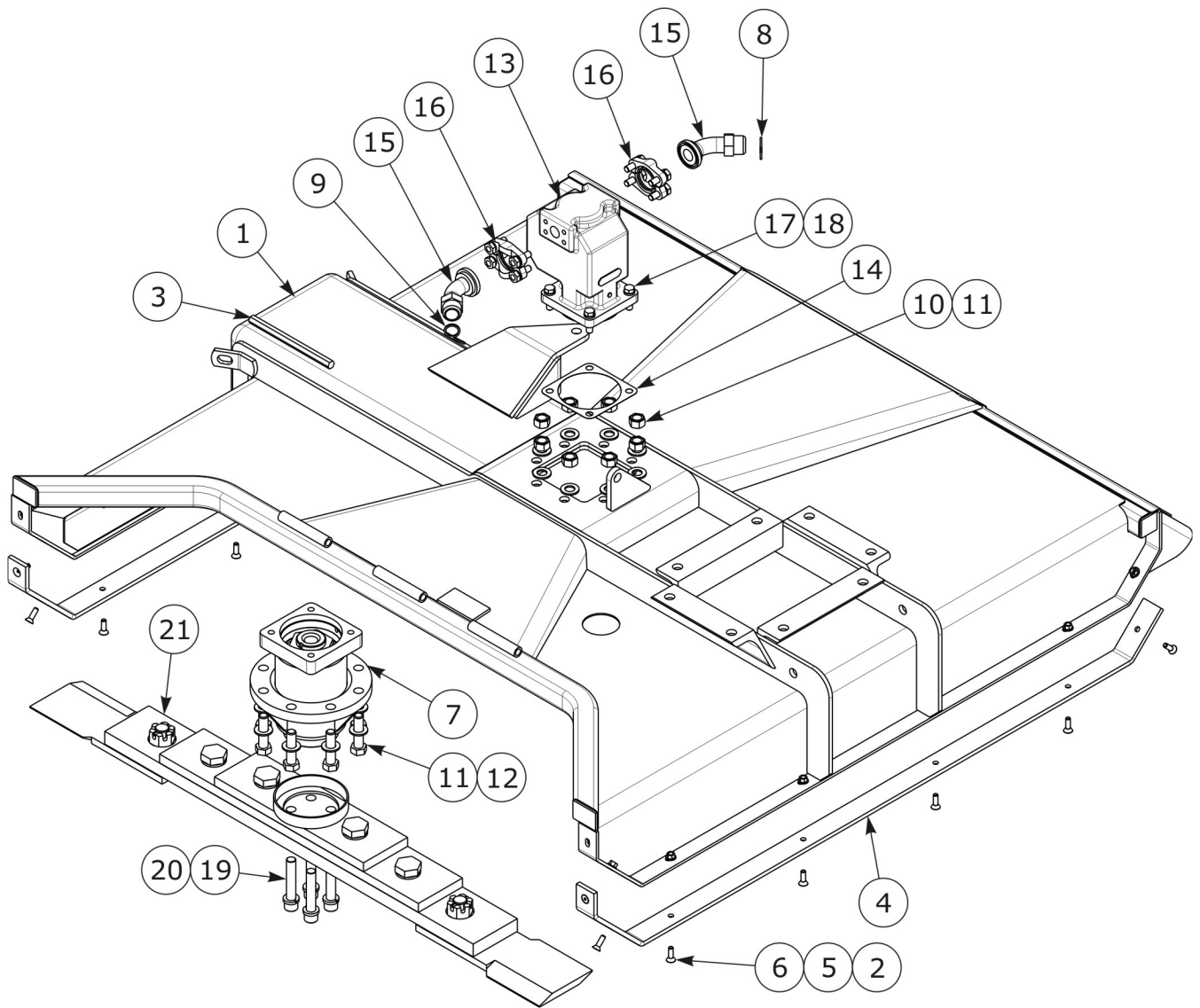
50 IN ROTARY - BLADE BAR ASY



ITEM	PART NO.	QTY.	DESCRIPTION
	02982906	1	ASY, BLADE BAR W/BLADES
1	02982912	1	LEAF, MIDDLE, BLADE BAR
2	02982913	1	LEAF, BOTTOM, BLADE BAR
3	02962635	2	BLADE, CW ROTATION
4	02982934	1	WLDMT. TOP BLADE BAR
5	02782900	2	BOLT, BLADE
6	02957089	2	LOCKWASHER 1-1/8 PL STD
7	00020900	2	NUT, SLOTTED, HVY, 1-1/8NF PL GR5
8	00023200	2	PIN, ROLL, 3/16X1-3/4
9	15C2000	4	WASHER, 1.375 X 2.50 X .165, HARDENED
10	02969235	2	HHCS, 1-1/4X3 PL GR8
11	02969236	2	HHCS, 1-1/4X2-1/4 PL GR8

THIS PAGE INTENTIONALLY LEFT BLANK

60 IN ROTARY - ASSEMBLY

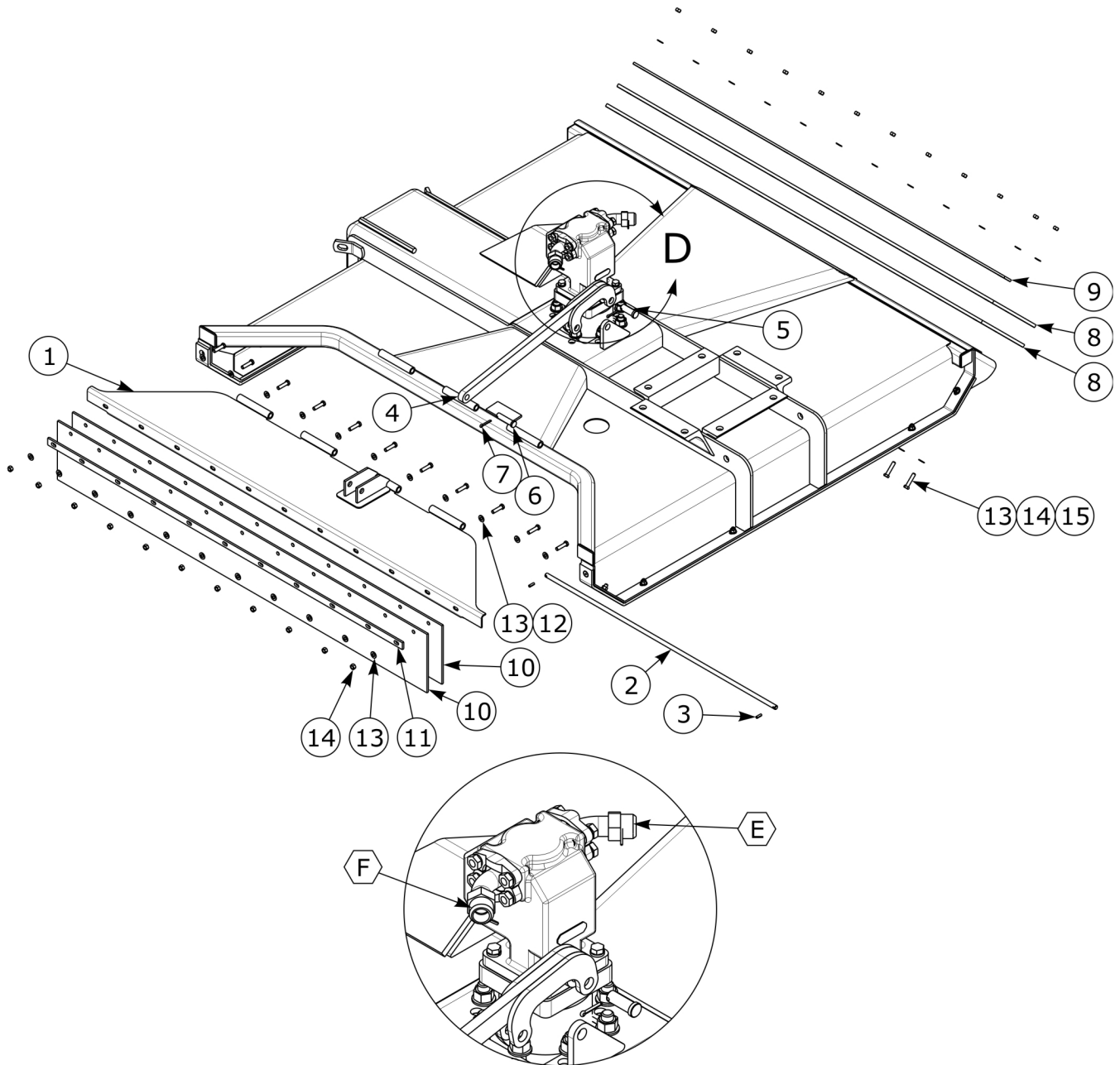


60 IN ROTARY - ASSEMBLY

Continued...

ITEM	PART NO.	QTY.	DESCRIPTION
	02986099	1	ASSEMBLY, 60" ROTARY, AXTREME GRADALL
1	02981410	1	WELDMENT,60" ROTARY,SWIVEL
2	00015800	37	LOCKNUT TLM 3/8 NC PLC
4	02966899	2	SKID SHOE
5	00059700	14	FSCS 3/8 NC X 1-1/4
6	15B600	14	WASHER 3/8 SAE P
7	02968859A	1	ASSEMBLY, SPINDLE HOUSING-SPLINED
8	02968894	1	VINYL TAPE RED 1/2" WIDE
9	02968896	1	VINYL TAPE BLUE 1/2" WIDE
10	00037200	8	NUT 3/4 NC LOCKNUT
11	5312316	16	FLATWASHER 3/4 HARDENED
12	03200269	8	HHCS 3/4 NC 3 PL8
13	02989904	1	HYD GEAR MOTOR 5.73 CID
14	02961038	1	GASKET
15	02962774	2	ADP HYD ELBOW 24FL - 20MJ - 45
16	00749101	2	SPLIT FLANGE KIT #24
17	00019600	4	LOCKWASHER 1/2 HEAVY
18	02891800	4	HHCS 1/2 NC 1-3/4 PL8
19	00003901	4	LOCKWASHER 3/4 HEAVY
20	02964861	4	SHCS 3/4 NC 4" LG PL8
21	02969230	1	ASY, BLADE BAR W/BLADES
22	80456075	1	XL SERIES III HITCH

60 IN ROTARY - SUB ASSEMBLY



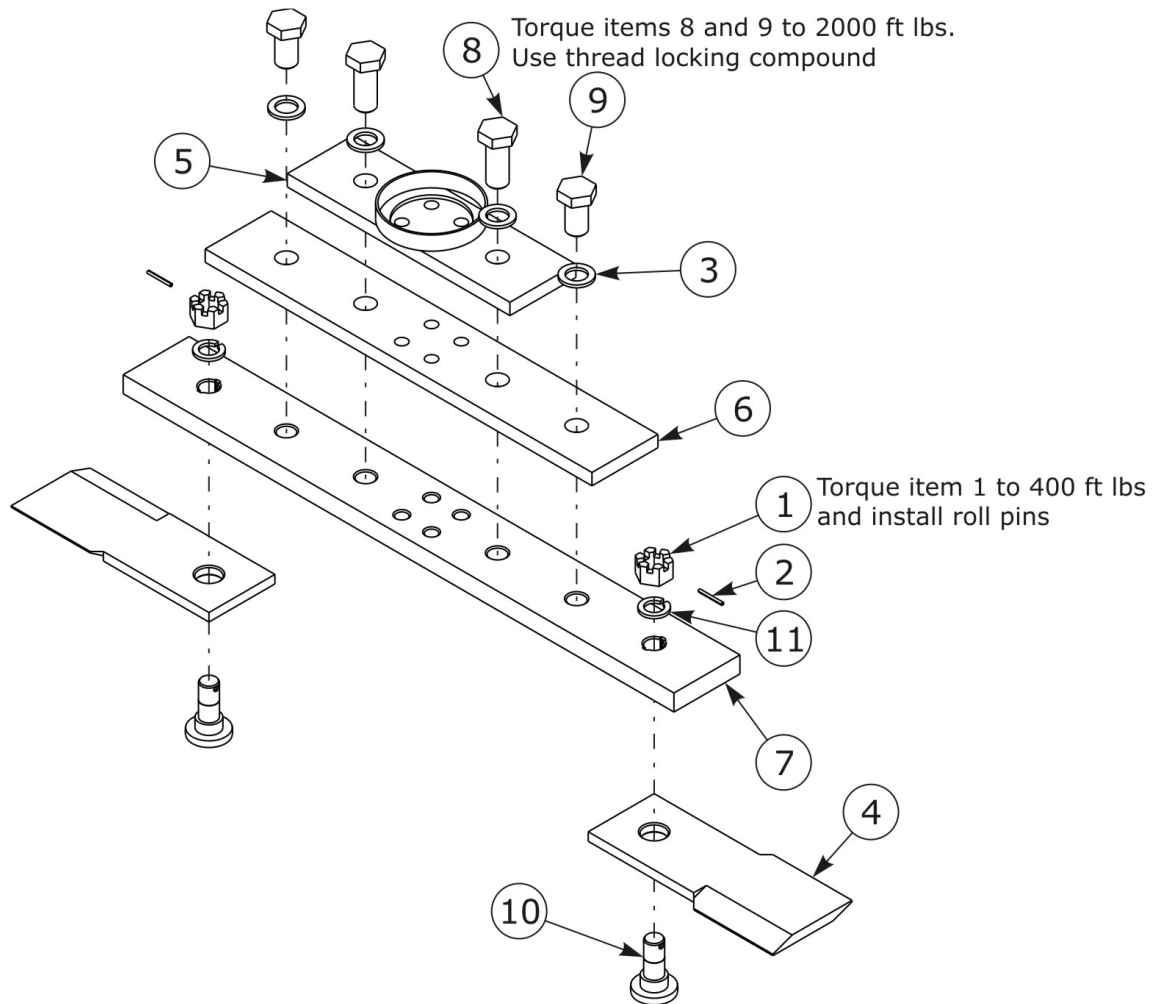
Hose Part Number	Description	Connection
02983211	Motor Pressure (Red)	E
02983211	Motor Return (Orange)	F

60 IN ROTARY - SUB ASSEMBLY

Continued...

ITEM	PART NO.	QTY.	DESCRIPTION
1	02971963	1	WELDMENT, DOOR
2	02967782	1	ROD-HINGE
3	99338S	2	PIN ROLL 1/4 X 3/4
4	02985574	1	BAR, LINK, DOOR
5	651102	1	PIN-DRILLED
6	02976448	1	PIN - MACHINED HEAD
7	00755153	2	PIN, COTTER 3/16 X 1-1/2 PL
8	02885700	2	REAR FLAP 10 X 63 X 3/8 THK
9	02885800	1	REAR CLAMP BAR
10	00759862	2	DEBRIS DEFLECTOR
11	00756875	1	FLAP HOLD DOWN BAR
12	00023100	11	HHCS 3/8 X 1-1/2 NC PL GR5
13	00011100	46	FLATWASHER 3/8 STD
14	00015800	37	LOCKNUT TLM 3/8 NC PLC
15	00007000	12	HHCS 3/8 NC 1-3/4 PL5

60 IN ROTARY - BLADE BAR ASY



ITEM	PART NO.	QTY.	DESCRIPTION
	02969230	1	BLADE BAR ASY, W/ BLADES
1	00020900	2	HEX SLOTTED NUT, HVY 1-1/8-NF PL GR5"
2	00023200	2	ROLL PIN, 3/16 X 1-3/4"
3	02969234	4	FLATWASHER, 1-1/4 HARDENED PL"
4	02761500	1	BLADE SET, MATCHED SET OF TWO
5	02971387	1	LEAF BLADE BAR, TOP
6	02969232	1	LEAF BLADE BAR, MIDDLE
7	02969233	1	LEAF BLADE BAR, BOTTOM
8	02969235	2	BOLT, HEX HEAD 1-1/4-NC X 3" PL GR8"
9	02969236	2	BOLT, HEX HEAD 1-1/4-NC X 2-1/4" PL GR8"
10	02782900	2	BLADE BOLT, SHOULDERED
11	02957089	2	LOCKWASHER, 1-1/8 PL STD"
12	02984572	1	BLADE BOLTS, NUTS, ROLLPIN KIT (INCLUDES 2 EACH OF ITEMS 1, 2, & 10)



TO THE OWNER/OPERATOR/DEALER

To keep your implement running efficiently and safely, read your manuals thoroughly and follow these directions and the Safety Messages in this Manual. The Table of Contents clearly identifies each section where you can easily find the information you need.

The OCCUPATIONAL SAFETY AND HEALTH ACT (1928.51 Subpart C) makes these minimum safety requirements of tractor operators:

REQUIRED OF THE OWNER

1. Provide a Roll-Over-Protective Structure that meets the requirements of this standard.
2. Provide seat belts that meet the requirements of this paragraph of this standard and SAE J4C.
3. Ensure that each employee uses such seat belt while the tractor is moving.
4. Ensure that each employee tightens the seat belt sufficiently to confine the employee to the protected area provided by the ROPS.

REQUIRED OF THE OPERATOR

1. Securely fasten seat belt if the tractor has a ROPS.
2. Where possible, avoid operating the tractor near ditches, embankments, and holes.
3. Reduce speed when turning, crossing slopes, and on rough, slick, or muddy surfaces.
4. Stay off slopes too steep for safe operation.
5. Watch where you are going, especially at row ends, on roads, and around trees.
6. Do not permit others to ride.
7. Operate the tractor smoothly, no jerky turns, starts, or stops.
8. Hitch only to the draw bar and hitch points recommended by the tractor manufacturer.
9. When the tractor is stopped, set brakes securely and use park lock, if available.



Keep children away from danger all day, every day...



Equip tractors with rollover protection (ROPS) and keep all machinery guards in place...



Please work, drive, play and live each day with care and concern for your safety and that of your family and fellow citizens.

ALAMO INDUSTRIAL

Limited Warranty

1. Limited Warranties

- 1.01. Alamo industrial warrants for one year from the purchase date to the original non-commercial, governmental, or municipal purchaser ("purchaser") and warrants for six months to the original commercial or industrial purchaser ("purchaser") that the goods purchased are free from defects in material or workmanship.
- 1.02. Manufacturer will replace for the purchaser any part or parts found, upon examination at one of its factories, to be defective under normal use and service due to defects in material or workmanship.
- 1.03. This limited warranty does not apply to any part of the goods which has been subjected to improper or abnormal use, negligence, alteration, modification, or accident, damaged due to lack of maintenance or use of wrong fuel, oil, or lubricants, or which has served its normal life. This limited warranty does not apply to any part of any internal combustion engine, or expendable items such as blades, shields, guards, or pneumatic tires except as specifically found in your operator's manual.
- 1.04. Except as provided herein, no employee, agent, dealer, or other person is authorized to give any warranties of any nature on behalf of manufacturer.

2. Remedies And Procedures

- 2.01. This limited warranty is not effective unless the purchaser returns the registration and warranty form to manufacturer within 30 days of purchase.
- 2.02. Purchaser claims must be made in writing to the authorized dealer ("dealer") from whom purchaser purchased the goods or an approved authorized dealer ("dealer") within 30 days after purchaser learns of the facts on which the claim is based.
- 2.03. Purchaser is responsible for returning the goods in question to the dealer.
- 2.04. If after examining the goods and/or parts in question, manufacturer finds them to be defective under normal use and service due to defects in material or workmanship, manufacturer will:
 - (A) repair or replace the defective goods or part(s) or
 - (B) reimburse purchaser for the cost of the part(s) and reasonable labor charges (as determined by manufacturer) if purchaser paid for the repair and/or replacement prior to the final determination of applicability of the warranty by manufacturer. The choice of remedy shall belong to manufacturer.
- 2.05. Purchaser is responsible for any labor charges exceeding a reasonable amount as determined by manufacturer and for returning the goods to the dealer, whether or not the claim is approved. Purchaser is responsible for the transportation cost for the goods or part(s) from the dealer to the designated factory.

3. Limitation Of Liability

- 3.01. Manufacturer disclaims any express (except as set forth herein) and implied warranties with respect to the goods including, but not limited to, merchantability and fitness for a particular purpose.
- 3.02. Manufacturer makes no warranty as to the design, capability, capacity, or suitability for use of the goods.
- 3.03. Except as provided herein, manufacturer shall have no liability or responsibility to purchaser or any other person or entity with respect to any liability, loss, or damage caused or alleged to be caused directly or indirectly by the goods including, but not limited to, any indirect, special, consequential, or incidental damages resulting from the use or operation of the goods or any breach of this warranty. Notwithstanding the above limitations and warranties, manufacturer's liability hereunder for damages incurred by purchaser or others shall not exceed the price of the goods.
- 3.04. No action arising out of any claimed breach of this warranty or transactions under this warranty may be brought more than two (2) years after the cause of action has occurred.

4. Miscellaneous

- 4.01. Proper venue for any lawsuits arising from or related to this limited warranty shall be only in Guadalupe county, Texas.
- 4.02. Manufacturer may waive compliance with any of the terms of this limited warranty, but no waiver of any terms shall be deemed to be a waiver of any other term.
- 4.03. If any provision of this limited warranty shall violate any applicable law and is held to be unenforceable, then the invalidity of such provision shall not invalidate any other provisions herein.
- 4.04. Applicable law may provide rights and benefits to purchaser in addition to those provided herein.

Keep for your records

Attention: Purchaser should fill in the blanks below for his reference when buying repair parts and/or for proper machine identification when applying for warranty.

Alamo Industrial Implement Model _____ Serial Number _____
Date Purchased _____ Dealer _____

Attention:
Read your operator's manual



ALAMO INDUSTRIAL
1502 E. Walnut
Seguin, Texas 78155
830-379-1480



BUILT SHARPER®

An Alamo Group Company

1502 E. Walnut St.
Seguin, Texas 78155



Sales and Marketing

Tel 800.882.5762

Fax 830.379.0864

support@alamo-industrial.com

Warranty Registration/Claims

www.alamoparts.com

Return Authorizations

Online Part Orders

Technical Information

www.alamoparts.com

Tel 800.356.6286

Fax 800.322.5141

www.alamo-industrial.com

