



SN 00061 to SN 00073 - Remote Controlled Mower

Rev 06-20

Part No. TR477642

PARTS MANUAL



ALAMO INDUSTRIAL

1502 E. Walnut
Seguin, Texas 78155
830-372-9595

¡ATENCIÓN!

LEA EL INSTRUCTIVO

Si No Lee Ingles, Pida Ayuda a Alguien
Que Si Lo Lea Para Que le Traduzca las
Medidas de Seguridad.



An Operator's Manual was shipped with the equipment in the Manual Canister. This Operator's Manual is an integral part of the safe operation of this machine and must be maintained with the unit at all times. READ, UNDERSTAND, and FOLLOW the Safety and Operation Instructions contained in this manual before operating the equipment. If the Operator's Manual is not with the equipment, contact your dealer or Alamo Industrial (800-356-6286) to obtain a Free copy before operating the equipment.

BOLT TORQUE

Mounting procedures for mowers will require a significant amount of bolt nut and washer installation.

Frame and structure mounting bolts should be installed using *Red Loctite*, and torqued to the dry values listed in the torque chart based on the bolt size and hardness.

Other structures such as pump mounting bolts should be installed with *Blue Loctite* and torqued to the dry values indicated in the chart.

Bolt tightness should be completed with and checked with a suitable torque wrench.

Torque checks should be completed throughout the life of the mower in accordance with the maintenance chart provided in this manual.



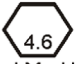

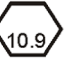
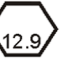
Loose bolts on a frame or in a casting may be a result of:

- Vibration from the mower due to imbalance of the mower blades
- Pulled threads due to over tightening
- Distortion of the hole due to under tightening during installation

Bolts broken or sheared in the mounting structure or tractor may be the result of:

- Improper alignment of the Mounting Plate or Structure such that it is not sitting flat on the mating surface
- Distortion of the bolt due to over-tightening
- Under tightening of the bolts

Check the bolt torque during installation and prior to delivery with a suitable torque wrench.

Proper Torque Values for Standard Bolts			Proper Torque Values for Metric Bolts				
Bolt Diameter			Bolt Diameter				
	Head Marking Three Lines Grade Five	Head Marking Six Lines Grade Eight		Head Marking 4.6	Head Marking 8.8 or 9.8	Head Marking 10.9	Head Marking 12.9
	Pound - Foot Value Dry	Pound - Foot Value Dry		Pound - Foot Value Dry	Pound - Foot Value Dry	Pound - Foot Value Dry	Pound - Foot Value Dry
1/4"	7	10	6mm	3	7	9	10
5/16"	15	22	8mm	6.2	16	23	24
3/8"	26	39	10mm	12	32	45	47
7/16"	42	60	12mm	21	55	79	81
1/2"	64	88	14mm	34	88	126	130
9/16"	100	134	16mm	53	137	196	202
5/8"	128	180	18mm	73	189	270	279
3/4"	227	320	20mm	104	267	382	394
7/8"	365	515	22mm	141	364	520	537
1"	547	772	24mm	179	461	660	680
			27mm	262	676	968	998
			30mm	355	917	1312	1353

To get Newton-Meters multiply pound-foot of torque by 1.356

TO THE OWNER/OPERATOR/DEALER

All implements with moving parts are potentially hazardous. There is no substitute for a cautious, safe-minded operator who recognizes the potential hazards and follows reasonable safety practices. The manufacturer has designed this implement to be used with all its safety equipment properly attached to minimize the chance of accidents.

BEFORE YOU START!! Read the safety messages on the implement and shown in your manual.
Observe the rules of safety and common sense!



DANGER

FAILING TO FOLLOW SAFETY MESSAGES AND OPERATING INSTRUCTION CAN CAUSE SERIOUS BODILY INJURY OR EVEN DEATH TO OPERATOR AND OTHERS IN THE AREA.

1. 	2. NO RIDERS. NO CHILDREN OPERATORS. 	3. USE SAFETY SHOES, HARD HAT, SAFETY GLASSES, SEAT BELTS, ROPS & OPS. 	4. BLOCK UP SECURELY BEFORE WORKING UNDER. 
---	---	--	---

1. Study and understand Operator's Manuals, Safety Decals, and Instructional Decals for tractor and implement to prevent misuse, abuse, and accidents. Practice before operating in a confined area or near passersby.
• Learn how to stop engine suddenly in an emergency. Be alert for passersby and especially children.

2. Allow no children on or near folding mower or tractor. Allow no riders on tractor or implement. Falling off may cause serious injury or death from being run over by tractor or mower or contact with rotating blades.

3. Operate only with tractor having Roll-Over Protective Structure (ROPS) and with seat belt securely fastened to prevent injury and possible death from falling off or tractor overturn.
• Personal Protective Equipment such as Hard Hat, Safety Glasses, Safety Shoes, & Ear Plugs are recommended.

4. Block up or support raised machine and all lifted components securely before putting hands or feet under or working underneath any lifted component to prevent crushing injury or death from sudden dropping or inadvertent operation of controls. Make certain area is clear before lowering or folding.

5. Before transporting, put Lift Lever in detent or full-lift position. Install Transport Safety Devices securely on folding mowers. Put Booms securely in Transport Rest.
• Folding and Boom Mowers have raised center of gravity. Slow down when turning and on hillsides.

6. Make certain that SMV sign, warning lights, and reflectors are clearly visible. Follow local traffic codes.

7. Never operate with Cutting Head or Folding Section raised if passersby, bystanders, or traffic are in the area to reduce possibility of injury or death from objects thrown by Blades under Guards or mower structure.

8. Before dismounting, secure implement in transport position or lower to ground.
• Put tractor in park or set brake, disengage PTO, stop engine, remove key, and wait until noise of rotation has ceased to prevent crushing by entanglement in rotating parts which could cause injury or death.
• Never mount or dismount a moving vehicle. Crushing from runover may cause serious injury or death.

5. TRANSPORT SAFELY, LOCK UP. 	6. USE SMV, LIGHTS, & REFLECTORS. 	7. DO NOT OPERATE WITH CUTTER OR WING RAISED 	8. DO NOT MOUNT OR DISMOUNT WHILE MOVING. 
--	--	--	--

02967827

WARRANTY INFORMATION:

Read and understand the complete Warranty Statement found in this Manual. Fill out the Warranty Registration Form in full and return it within 30 Days. Make certain the Serial Number of the Machine is recorded on the Warranty Card and on the Warranty Form that you retain. The use of "will-fit" parts will void your warranty and can cause catastrophic failure with possible injury or death.

CHANGE PAGES

[illegible]

CHANGE PAGES

The following is a listing of pages that have been changed since the latest publication date for the overall document.

PARTS ORDERING GUIDE

The following instructions are offered to help eliminate needless delay and error in processing purchase orders for the equipment in this section.

1. The Parts Section is prepared in logical sequence and grouping of parts that belong to the basic machine featured in this manual. Part Numbers and Descriptions are given to help locate the parts and quantities required.
2. The Purchase Order must include the name and address of the person or organization ordering the parts, who should be charged, and if possible, the serial number of the machine for which the parts are ordered.
3. The Purchase Order must clearly list the quantity of each part, the complete and correct part number (be sure to include all periods), and the basic name of the part.
4. The Manufacturer reserves the right to substitute parts where applicable.
5. Some parts are unlisted items which are special production items not normally stocked and are subject to special handling. Request a quotation for such parts before sending a Purchase Order.
6. The Manufacturer reserves the right to change prices without prior notice.

Note: *Please refer to The Safety Section in the front of this Manual for the proper part number when ordering replacement safety decals.*



For maximum safety and to guarantee optimum product reliability, always use genuine Alamo Industrial Parts. The use of inferior replacement parts may cause premature or catastrophic failure which could result in serious injury or death. Direct any questions regarding parts to:



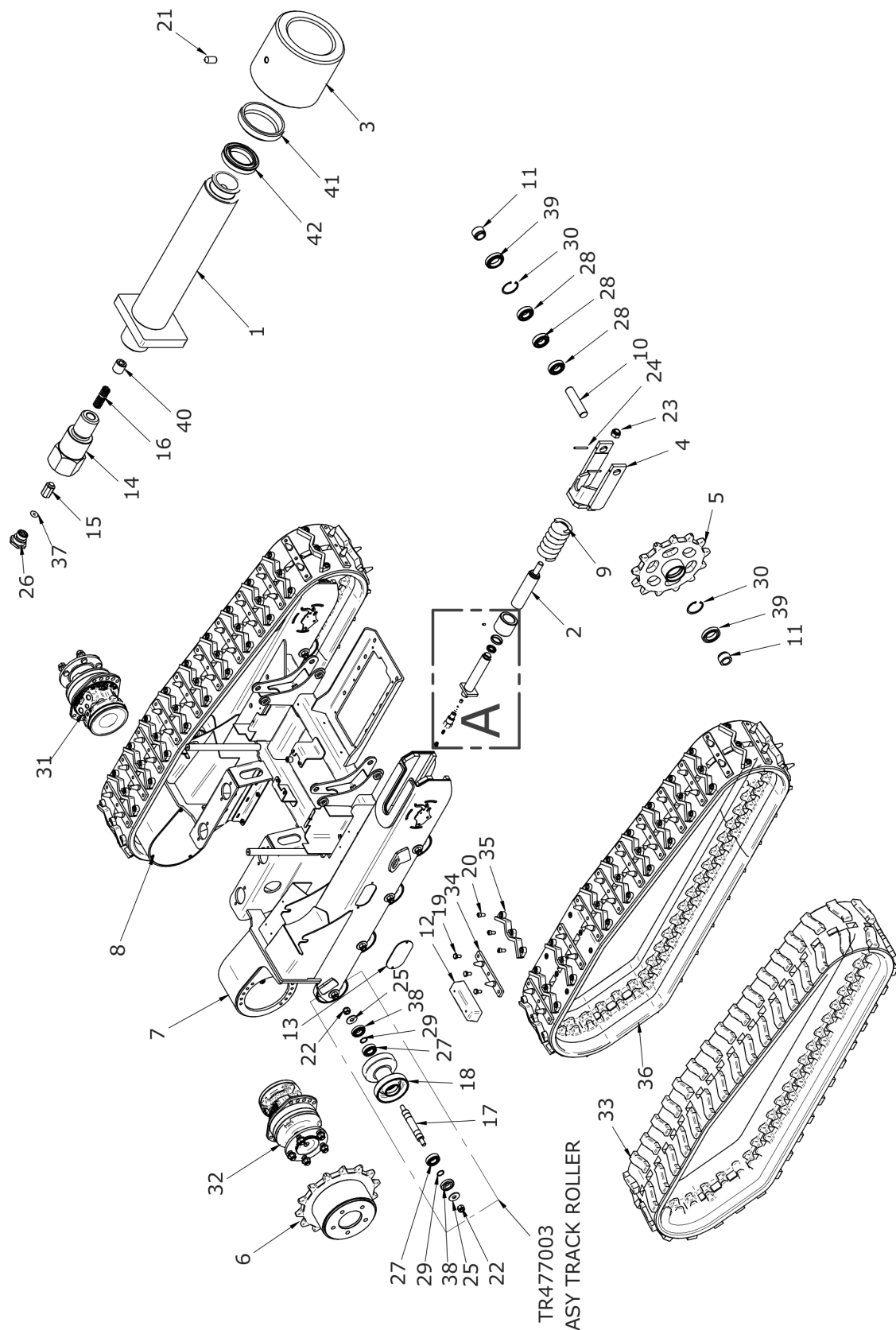
ALAMO INDUSTRIAL

1502 E. Walnut
Seguin, Texas 78155
830-379-1480

PART NAME INDEX

CHASSIS (PART 1).....	4
CHASSIS (PART 2).....	6
DIESEL ENGINE (PART 1).....	8
DIESEL ENGINE (PART 2).....	10
COMPONENTS AND TANKS (PART 1).....	12
COMPONENTS AND TANKS (PART 2).....	14
COMPONENTS AND TANKS (PART 3).....	16
COVER ASSY AND CLOSURES (PART 1).....	18
COVER ASSY AND CLOSURES (PART 2).....	20
CUTTING HEAD (PART 1).....	22
CUTTING HEAD (PART 2).....	24
CUTTING HEAD HYDRAULIC LINE P/N TR477667.....	26
ROTOR AND CUTTING TOOLS.....	28
MISCELLANEOUS PARTS.....	30

CHASSIS (PART 1)



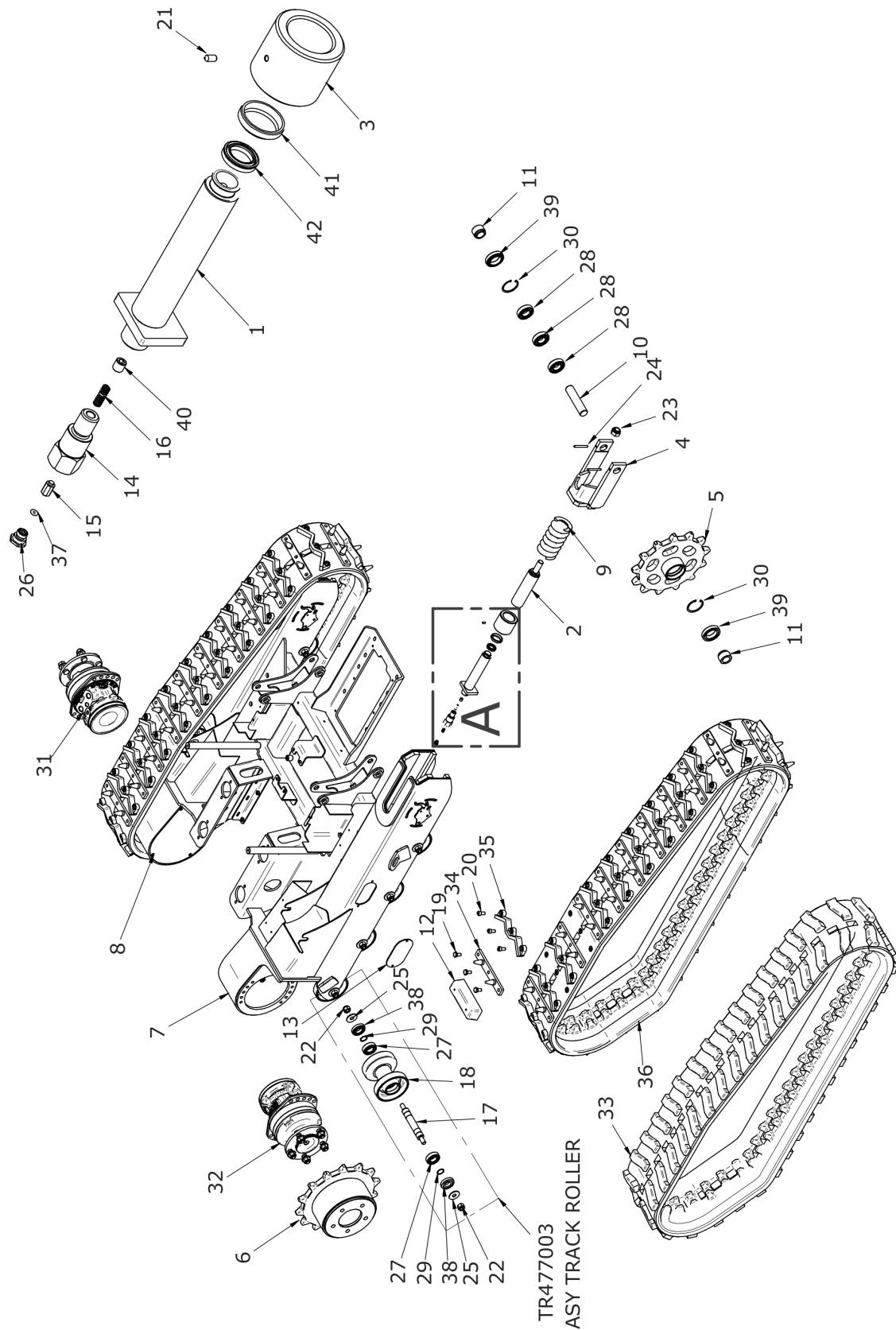
CHASSIS (PART 1)

Continued...

ITEM	PART NO.	QTY.	DESCRIPTION
1	TR477004	2	TENSIONER ROD
2	TR477005	2	TENSIONER CYLINDER
3	TR477006	2	TENSIONER CAP
4	TR477007	2	FRONT WHEEL FORK
5	TR477008	2	SPROCKET, FRONT
6	TR477009	2	SPROCKET, REAR DRIVE
7	TR477174	1	UNDERCARRIAGE
8	TR477175	2	PLATE, WHL MOTOR COVER
9	TR477010	2	SPRING, TRACK TENSIONER
10	TR477011	2	PIN, FRONT SPROCKET
11	TR477012	4	BUSHING, FRONT SPROCKET
12	TR477176	46	BLOCK, RUBBER, SPIKE
13	TR477177	2	PLATE, TENSIONER COVER
14	TR477013	2	VALVE, TRACK TENSION
15	TR477014	2	CYLINDER, TRACK VALVE
16	TR477015	2	SPRING, TRACK VALVE
17	TR477178	10	AXLE, TRACK ROLLER
18	TR477179	10	WHEEL, TRACK ROLLER
19	TR477030	141	SCREW, STEEL SPIKE
20	TR477031	282	SCREW, STEEL CLEAT
21	TR477016	2	SET SCREW, TENSIONER CAP
22	TR477180	20	LOCKNUT M14 X 1.5
23	TR477033	2	LOCKNUT M20X1.5
24	TR477032	4	ROLL PIN, FRONT SPROCKET
25	TR477181	20	FLATWASHER M14
26	TR477017	2	BUTTON HEAD FITTING
27	TR477182	20	BEARING, INNER, TRACK ROLLER
28	TR477018	6	BEARING, FRONT SPROCKET
29	TR477183	20	SNAP RING, 25MM
30	TR477019	4	KEEPER, BEARING
31	TR477020	1	MOTOR, LH TRACK DRIVE
32	TR477021	1	MOTOR, RH TRACK DRIVE
33	TR477002	2	TRACK, RUBBER
34	TR477022	46	STEEL SPIKE
35	TR477023	94	STEEL CLEAT
36	TR477024	2	TRACK, FOR CLEATS/SPIKES
37	TR477025	2	O-RING
38	TR477184	20	SEAL, OUTER, TRACK ROLLER
39	TR477026	4	SEAL, FRONT SPROCKET
40	TR477027	2	NUT, PERFORATED
41	TR477028	2	BUSHING, FRONT CAP

TR477642 - TRAXX RF SN00061 to SN00073 Pub 01-12 rev 06-20

CHASSIS (PART 2)

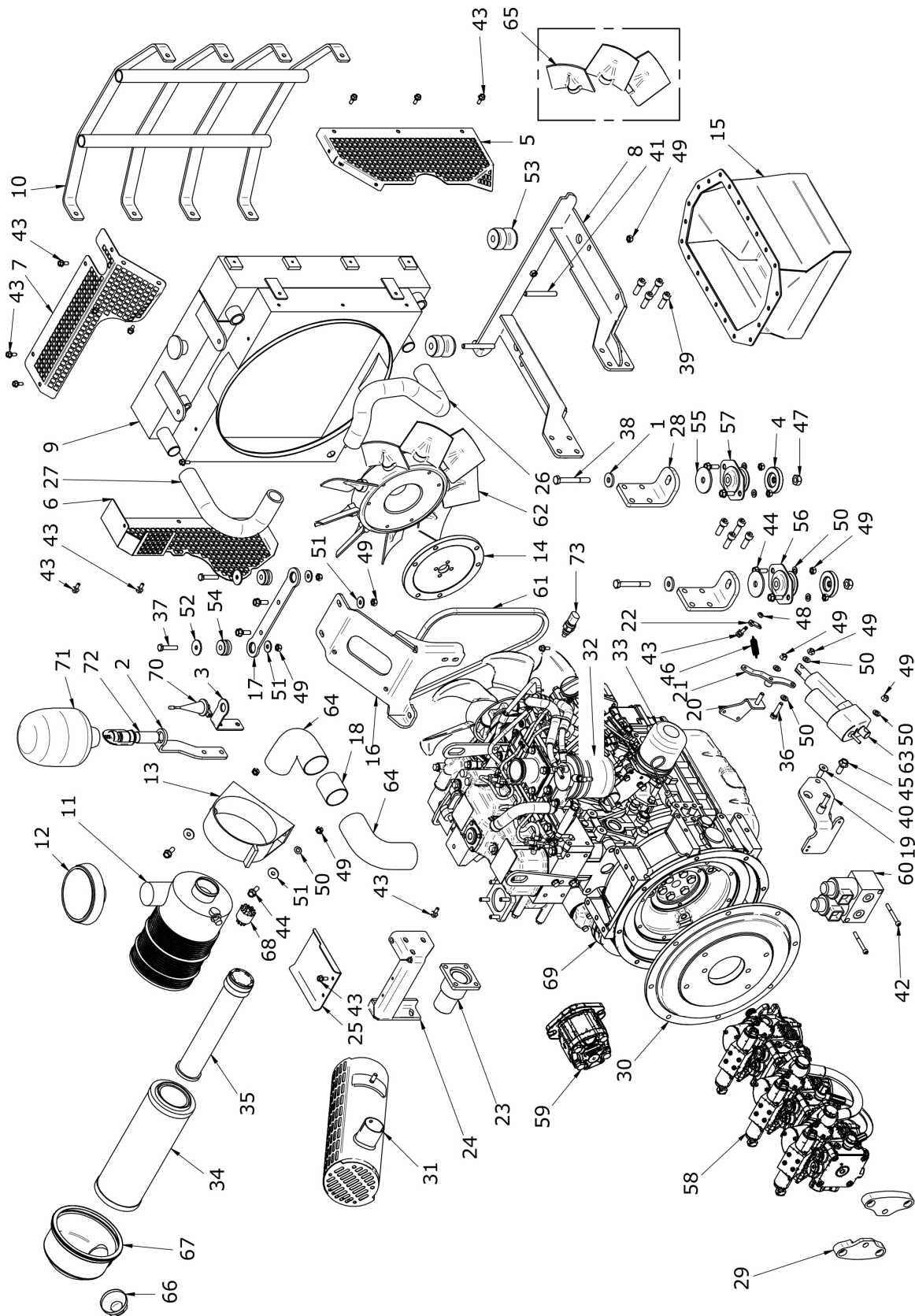


CHASSIS (PART 2)

Continued...

ITEM	PART NO.	QTY.	DESCRIPTION
42	TR477029	2	WASHER, FRONT CAP

DIESEL ENGINE (PART 1)



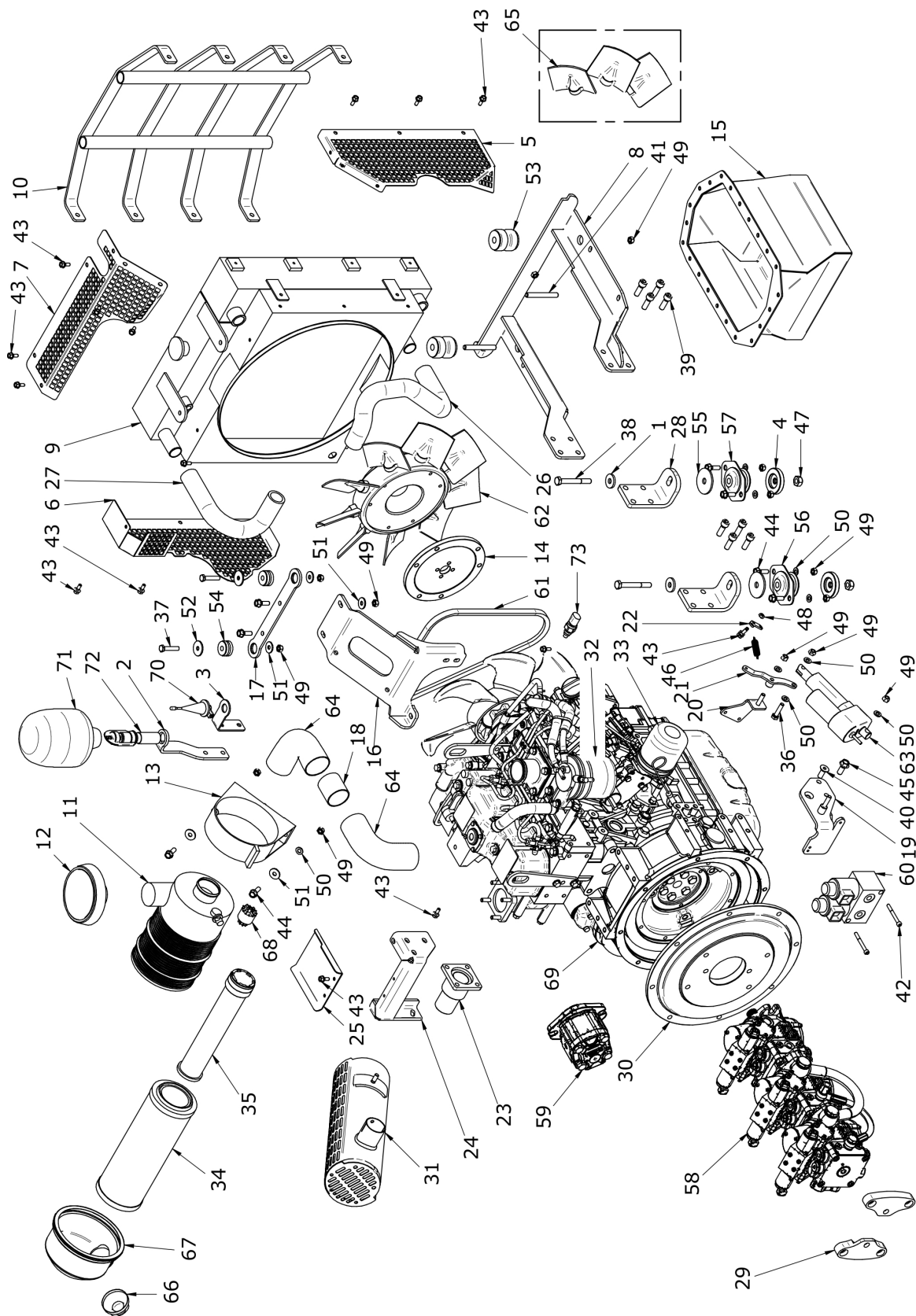
DIESEL ENGINE (PART 1)

Continued...

ITEM	PART NO.	QTY.	DESCRIPTION
1	TR477185	4	FLATWASHER 11MM
2	TR477036	1	BRACKET, BEACON
3	TR477186	1	BRACKET, ANTENNA
4	TR477187	4	SPACER, ISO MOUNT
5	TR477188	1	GUARD, FAN, LEFT SIDE
6	TR477190	1	GUARD, FAN, RIGHT SIDE
7	TR477189	1	GUARD, FAN, TOP
8	TR477789	1	BRACKET, RADIATOR SUPPORT
9	TR477037	1	ASY RADIATOR
10	TR477192	1	GUARD, RADIATOR
11	TR477193	1	CONTIANER, AIR FILTER
12	TR477194	1	COVER, AIR INTAKE
13	TR477195	1	BRACKET, AIR FILT CONTAINER
14	TR477196	1	FLANGE, RADIATOR FAN
15	TR477197	1	OIL PAN
16	TR477198	1	SUPPORT, AIR FILTER
17	TR477199	1	BRACKET, TOP RADIATOR MT
18	TR477200	1	JOINT, STRAIGHT, AIR INTAKE
19	TR477038	1	BRACKET, ACTUATOR
20	TR477039	1	BRACKET, THROTTLE
21	TR477040	1	LINKAGE, THROTTLE
22	TR477041	1	LINKAGE, THROTTLE SPRING
23	TR477201	1	MANIFOLD, MUFFLER
24	TR477202	1	SUPPORT, MUFFLER
25	TR477203	1	COVER, ALTERNATOR
26	TR477204	1	HOSE, WATER, RADIATOR, LEFT
27	TR477205	1	HOSE, WATER, RADIATOR, RIGHT
28	TR477206	4	BRACKET, ENGINE MOUNT
29	TR477207	1	MOUNT, PUMP
30	TR477034	1	ADAPTER, FLYWHEEL-PUMP
	TR477035	1	FLYWHEEL
31	TR477208	1	MUFFLER
32	TR477042	1	FUEL FILTER
33	TR477043	1	ENGINE OIL FILTER
34	TR477044	1	FILTER, PRIMARY AIR
35	TR477045	1	FILTER, SECONDARY AIR
36	TR477046	1	SCREW, M8X35
37	TR477209	2	SCREW, M8X40 GR8.8
38	TR477210	4	SCREW, M10X80 GR10.9
39	TR477211	16	SCREW, M10X30 GR8.8
40	TR477047	1	SHCS M10X80

TR477642 - TRAXX RF SN00061 to SN00073 Pub 01-12 rev 06-20

DIESEL ENGINE (PART 2)



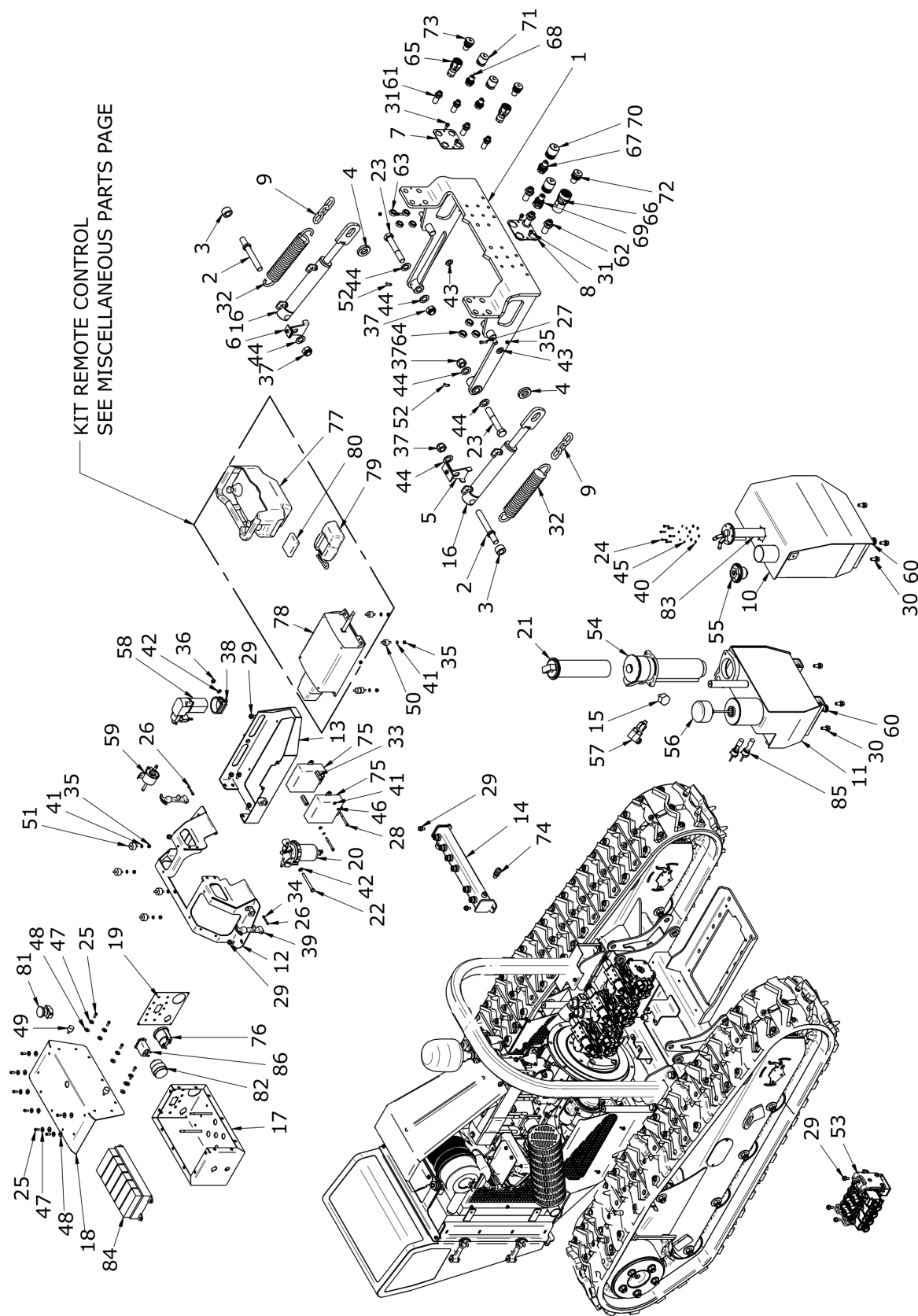
DIESEL ENGINE (PART 2)

Continued...

ITEM	PART NO.	QTY.	DESCRIPTION
41	TR477212	2	SCREW, FLAT TIP M10X80 GR10.9
42	TR477213	2	SCREW, M6X55 GR8.8
43	TR477048	16	FHCS M6X16
44	TR477214	12	SCREW, FLANGE, M8X25 GR8.8
45	TR477049	2	FHCS M10X25
46	TR477050	1	SPRING, THROTTLE
47	TR477215	4	LOCKNUT M12
48	TR477051	2	LOCKNUT M6
49	TR477052	19	LOCKNUT M8
50	TR477053	14	FLATWASHER M8
51	TR477216	6	FLATWASHER M12 LARGE
52	TR477217	2	FLATWASHER M12 OD32MM
53	TR477054	2	RUBBER ISO MOUNT, RADIATOR
54	TR477218	2	RUBBER ISO MNT, RADIATOR TOP
55	TR477219	4	FLATWASHER, ISO MOUNT
56	TR477055	2	ISO MOUNT, ENGINE FRONT
57	TR477056	2	ISO MOUNT, ENGINE REAR
58	TR477057	1	PISTON PUMP
59	TR477058	1	GEAR PUMP
60	TR477059	1	SPEED/BRAKE VALVE
61	TR477060	1	ENGINE BELT
62	TR477061	1	FAN, ENGINE
63	TR477062	1	ACTUATOR, THROTTLE
64	TR477220	2	90 DEGREE AIR INTAKE
65	TR477221	3	KIT, 3 FAN BLADES
66	TR477222	1	VALVE, DUST
67	TR477223	1	CAP, AIR FILTER
68	TR477224	1	SENSOR, FILTER LIFE
69	TR477225	1	ENGINE, ISUZU DIESEL
70	TR477226	1	ANTENNA, COMMUNICATION
71	TR477063	1	BEACON
72	TR477064	1	BEACON CONNECTOR
73	TR477227	1	SENSOR, FUEL WATER

TR477642 - TRAXX RF SN00061 to SN00073 Pub 01-12 rev 06-20

COMPONENTS AND TANKS (PART 1)



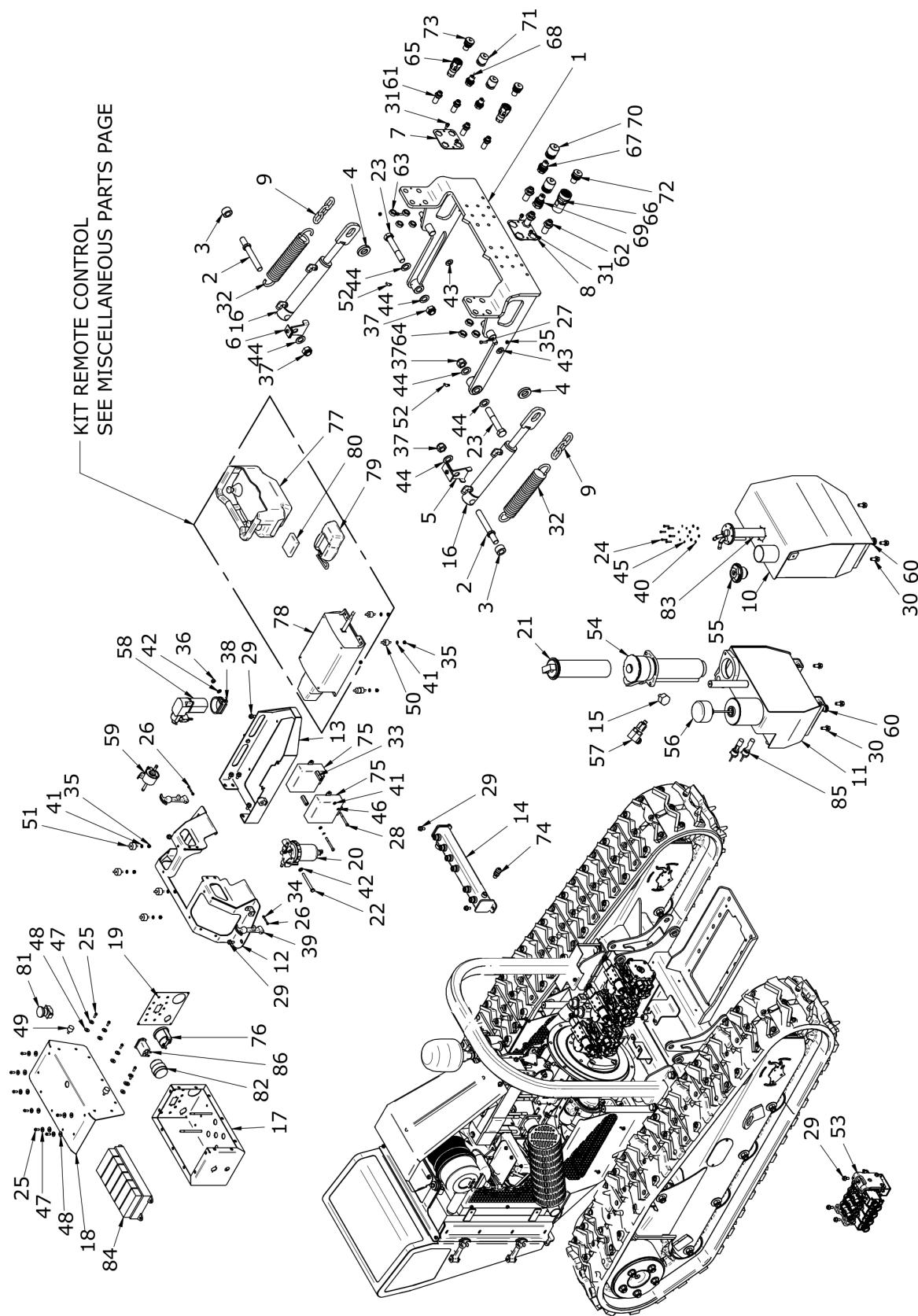
COMPONENTS AND TANKS (PART 1)

Continued...

ITEM	PART NO.	QTY.	DESCRIPTION
1	TR477228	1	TOOLBAR, FRONT
2	TR477229	2	PIN, LIFT CYLINDER
3	TR477230	2	RETAINER, LIFT SPRING
4	TR477231	2	FLATWASHER, LIFT CYLINDER
5	TR477232	1	BRACKET, RH LIFT CYLINDER
6	TR477233	1	BRACKET, LH LIFT CYLINDER
7	TR477234	1	BULKHEAD, LH TOOLBAR
8	TR477235	1	BULKHEAD, RH TOOLBAR
9	TR477236	2	CHAIN, TOOLBAR LIFT
10	TR477237	1	TANK, FUEL
11	TR477238	1	TANK, HYDRAULIC
12	TR477239	1	BRACKET, ELECTRIC BOX
13	TR477240	1	BRACKET, RADIO RECEIVER
14	TR477241	1	MANIFOLD, HYDRAULIC
15	TR477242	1	ADAPTER, OIL SENSOR
16	TR477067	2	HEAD LIFT CYLINDER
17	TR477243	1	BOX, ELECTRIC CONTROL
18	TR477244	1	COVER, ELECTRIC CNTRL BOX
19	TR477245	1	INSTRUMENT PANEL
20	TR477068	1	PRIMARY FUEL FILTER
21	TR477065	1	ELEMENT, HYD FILTER
22	TR477246	1	SCREW M8X85
23	TR477247	2	HHCS M20-P1.5 X 120MM
24	TR477248	6	SCREW M4X20 GR8.8
25	TR477249	12	SCREW M6X16
26	TR477250	2	SCREW M4X40 GR8.8
27	TR477251	2	SCREW M6X25 GR8.8
28	TR477252	2	SCREW M6X60 GR8.8
29	TR477253	34	SCREW M8X16 GR 8.8
30	TR477049	8	FHCS M10X25
31	TR477254	6	SCREW M6X16 GR10.9
32	TR477069	2	HEAD LIFT SPRING
33	TR477255	2	NUT M8
34	TR477256	2	LOCKNUT M4
35	TR477257	12	LOCKNUT M6
36	TR477258	1	LOCKNUT M8
37	TR477033	4	LOCKNUT M20X1.5
38	TR477259	1	CLAMP, COMPRESSOR
39	TR477260	2	LATCH, RUBBER, HOOD

TR477642 - TRAXX RF SN00061 to SN00073 Pub 01-12 rev 06-20

COMPONENTS AND TANKS (PART 2)



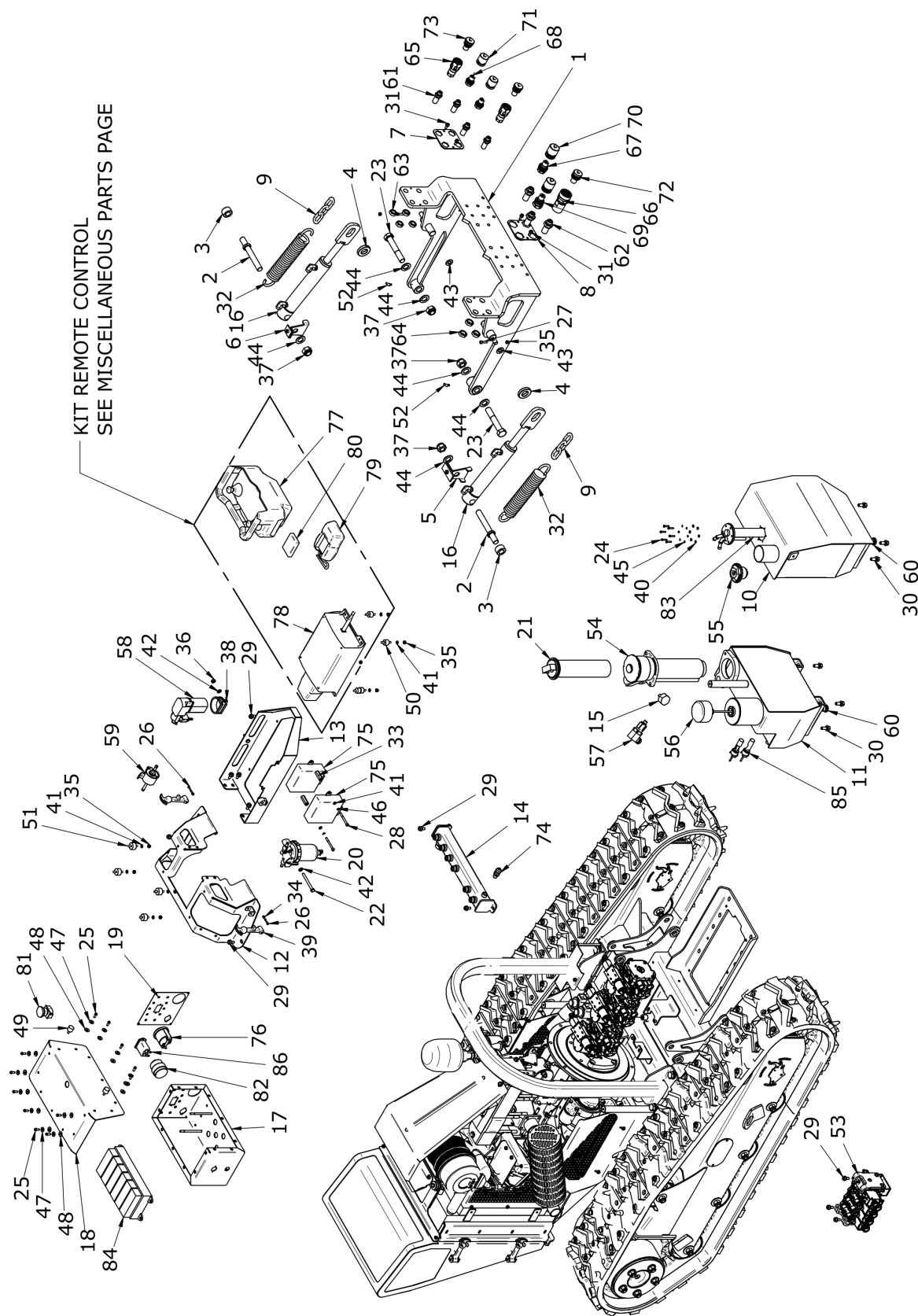
COMPONENTS AND TANKS (PART 2)

Continued...

ITEM	PART NO.	QTY.	DESCRIPTION
40	TR477261	6	WASHER M4
41	TR477262	10	WASHER M6
42	TR477053	2	FLATWASHER M8
43	TR477263	2	WASHER M14
44	TR477264	6	WASHER M20
45	TR477265	6	LOCKWASHER M4
46	TR477266	2	LOCKWASHER M6
47	TR477267	12	FLATWASHER M6
48	TR477268	12	WASHER, RUBBER, M6
49	TR477269	2	STOP, HOOD
50	TR477270	4	MOUNT, RUBBER ISO, M6
51	TR477271	4	MOUNT, RUBBER ISO, M6 LG
52	TR477272	2	GREASE FTG M6 45DEG
53	TR477070	1	VALVE BLOCK
54	TR477071	1	HYDRAULIC OIL FILTER HOUSING
55	TR477072	1	FUEL CAP, KEYED
56	TR477073	1	HYDRAULIC OIL CAP
57	TR477273	1	SENSOR, HYD VAC PRESS
58	TR477074	1	COMPRESSOR, FAN REVERSE
59	TR477075	1	FUEL PUMP
60	TR477274	2	PLUG, TANK
61	TR477275	4	ADP HYD 11/16-3/8 BLKHD
62	TR477276	3	ADP HYD 13/16-1/2 BLKHD
63	TR477277	4	NUT 11/16-16
64	TR477278	3	NUT 13/16-16
65	TR477279	2	ADP HYD QD 3/8F VV
66	TR477280	1	ADP HYD QD 1/2F VVS
67	TR477281	1	ADP HYD QD 1/2M VV
68	TR477282	2	ADP HYD QD 3/8M VV
69	TR477283	1	ADP HYD QD 1/2M VVS
70	TR477284	2	CAP HYD QD 1/2F VV/VVS
71	TR477285	2	CAP HYD QD 3/8F VV/VVS
72	TR477286	1	PLUG HYD QD 1/2M VV/VVS
73	TR477287	2	PLUG HYD QD 3/8M VV/VVS
74	TR477288	1	PLUG 1/4"
75	TR477076	2	PROCESSOR
76	TR477289	1	GUAGE, WATER TEMP
77	TR477152	1	REMOTE CONTROL
78	TR477290	1	RECEIVER, REMOTE
79	TR477166	1	CHARGER, REMOTE BATTERY, DC
	TR477167	1	CHARGER, REMOTE BATTERY, AC

TR477642 - TRAXX RF SN00061 to SN00073 Pub 01-12 rev 06-20

COMPONENTS AND TANKS (PART 3)

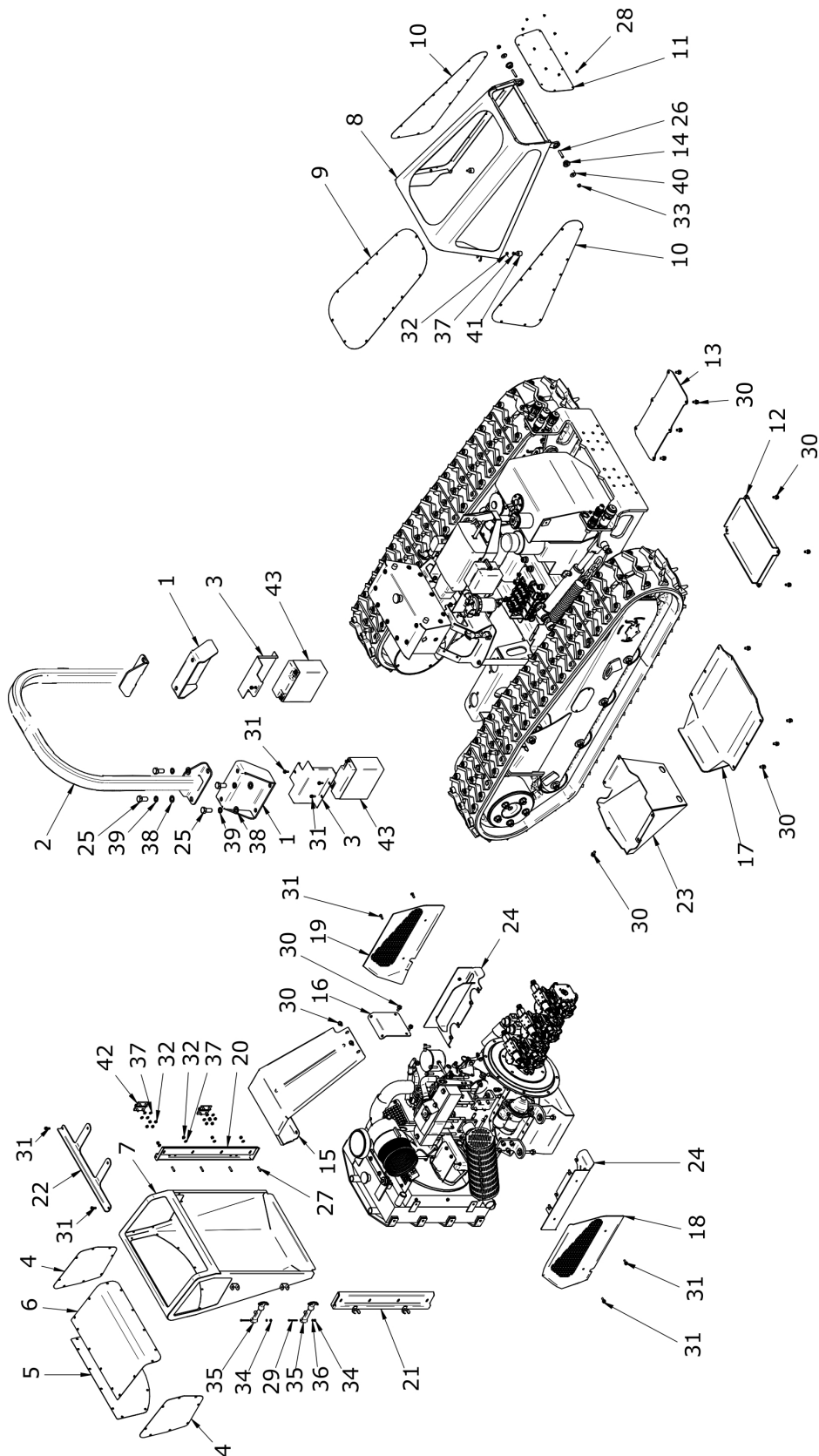


COMPONENTS AND TANKS (PART 3)

Continued...

ITEM	PART NO.	QTY.	DESCRIPTION
80	TR477078	1	BATTERY, REMOTE
81	TR477291	1	SWITCH, EMERGENCY STOP
82	TR477292	1	SWITCH, IGNITION
83	TR477079	1	SENSOR, FUEL LEVEL
84	TR477080	1	FUSE/RELAY BOX
85	TR477081	2	SENSOR, HYD OIL LEVEL
86	TR477293	1	HOUR METER

COVER ASSY AND CLOSURES (PART 1)



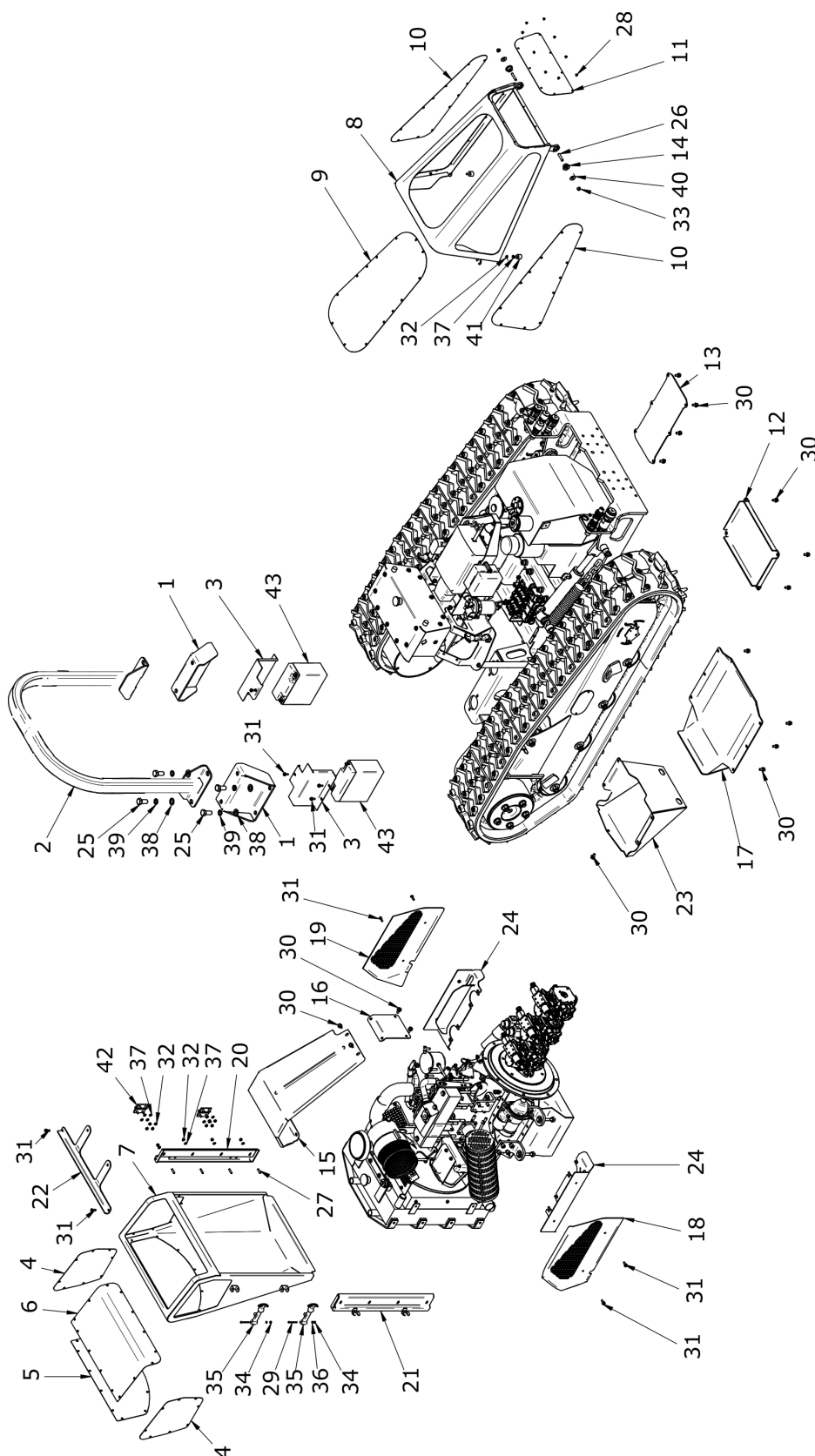
COVER ASSY AND CLOSURES (PART 1)

Continued...

ITEM	PART NO.	QTY.	DESCRIPTION
1	TR477294	2	SUPPORT, ROLL-BAR
2	TR477295	1	ROLL-BAR
3	TR477296	2	COVER, BATTERY
4	TR477297	2	MESH, REAR DOOR SIDE
5	TR477298	1	MESH, REAR DOOR BACK
6	TR477299	1	MESH, REAR DOOR TOP
7	TR477300	1	DOOR, REAR
8	TR477301	1	DOOR, FRONT
9	TR477302	1	MESH, FRONT DOOR TOP
10	TR477303	2	MESH, FRONT DOOR SIDE
11	TR477304	1	MESH, FRONT DOOR FRONT
12	TR477305	1	PLATE, VALVE COVER
13	TR477306	1	PLATE, TANK CAVITY
14	TR477307	2	BUSHING M8
15	TR477308	1	ENGINE GUARD
16	TR477309	1	BRACKET, ENGINE GUARD
17	TR477310	1	PLATE, SKID, OIL PAN
18	TR477311	1	GUARD, ENGINE, RH
19	TR477312	1	GUARD, ENGINE, LH
20	TR477313	1	MOUNT, HINGE, REAR DOOR
21	TR477314	1	MOUNT, LATCH, REAR DOOR
22	TR477315	1	SUPPORT, RADIATOR TOP
23	TR477316	1	PLATE, SKID, REAR
24	TR477317	2	BRACKET, SIDE GUARD
25	TR477318	8	SCREW M16X40 GR10.9
26	TR477319	2	SCREW, FLAT TIP M8X40
27	TR477320	8	SCREW M6X25 GR10.9
28	TR477321	9	SCREW M4X40 GR8.8
29	TR477250	2	SCREW M4X40 GR8.8
30	TR477253	27	SCREW M8X16 GR 8.8
31	TR477254	12	SCREW M6X16 GR10.9
32	TR477322	18	LOCKNUT M6
33	TR477323	2	LOCKNUT M8
34	TR477256	2	LOCKNUT M4
35	TR477260	2	LATCH, RUBBER, HOOD
36	TR477261	2	WASHER M4
37	TR477262	18	WASHER M6
38	TR477110	8	FLATWASHER M16
39	TR477113	8	LOCKWASHER M16
40	TR477216	2	FLATWASHER M12 LARGE
41	TR477269	2	STOP, HOOD

TR477642 - TRAXX RF SN00061 to SN00073 Pub 01-12 rev 06-20

COVER ASSY AND CLOSURES (PART 2)

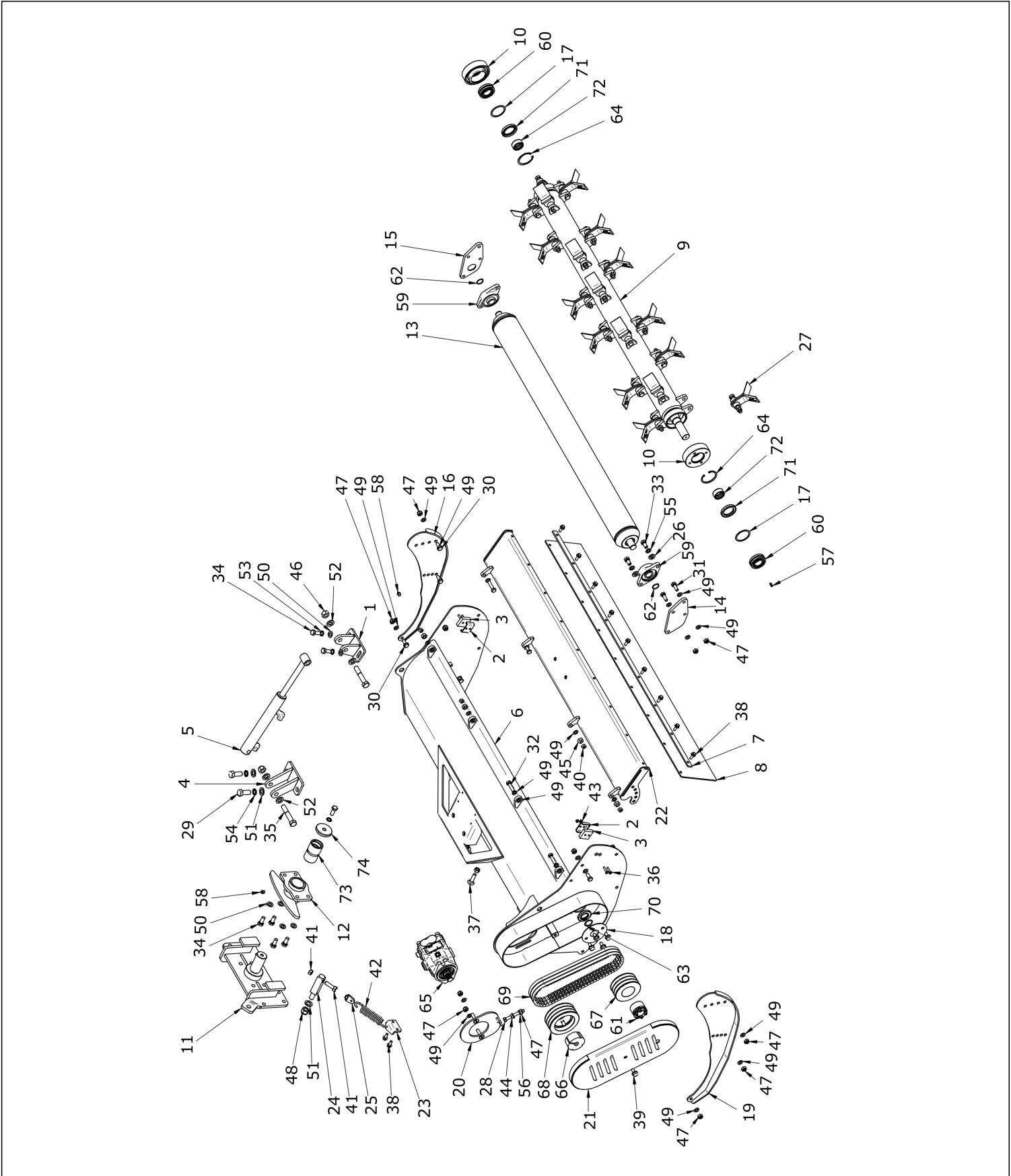


COVER ASSY AND CLOSURES (PART 2)

Continued...

ITEM	PART NO.	QTY.	DESCRIPTION
42	TR477396	2	HINGE, REAR DOOR
43	TR477327	2	BATTERY, TRAXXRF

CUTTING HEAD (PART 1)



©2020 Alamo Group Inc.

Parts Section -22

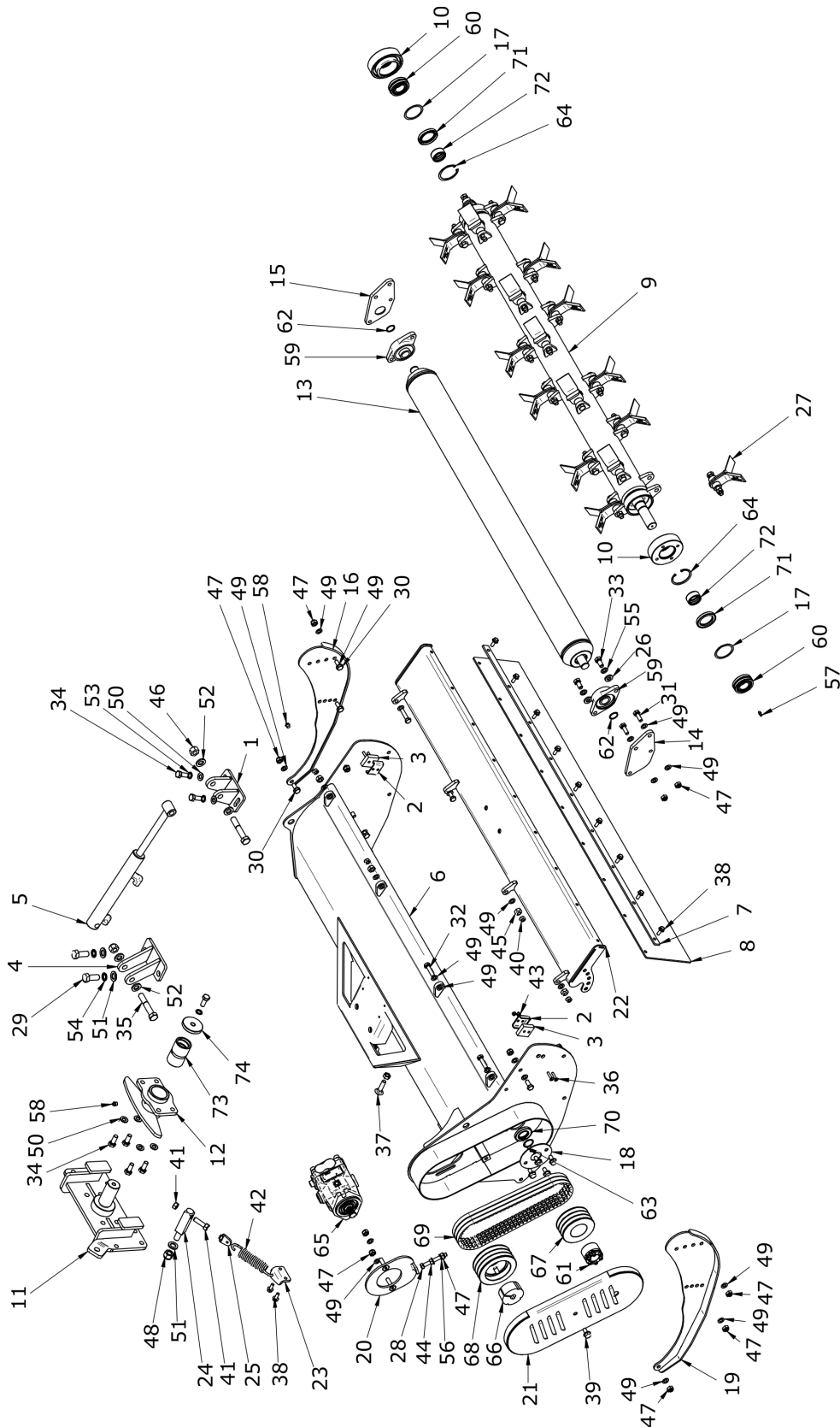
CUTTING HEAD (PART 1)

Continued...

ITEM	PART NO.	QTY.	DESCRIPTION
1	TR477082	1	CYL ROD CLEVIS
2	TR477328	2	BRKT, DOOR SUPPORT
3	TR477329	2	DOOR SUPPORT
4	TR477083	1	CYL BARREL CLEVIS
5	TR477084	1	DOOR CYLINDER
6	TR477330	1	FRAME, HEAD
7	TR477085	2	DOOR FLAP CLAMP
8	TR477086	2	DOOR FLAP
9	TR477353	1	Y-FLAIL ROTOR, NO KNIVES
10	TR477087	2	BEARING COLLAR
11	TR477088	1	OSCILLATING FLANGE
12	TR477089	1	OSCILLATION JOINT
13	TR477090	1	REAR ROLLER
14	TR477091	1	RH ROLLER MOUNT
15	TR477092	1	LH ROLLER MOUNT
16	TR477093	1	LEFT SKID
17	TR477094	2	WASHER
18	TR477331	1	FLANGE, ROTOR, POWER IN
19	TR477095	1	RIGHT SKID
20	TR477332	1	PLATE, MOTOR MOUNT
21	TR477096	1	DRIVE SYSTEM GUARD
22	TR477097	1	DOOR
23	TR477098	1	SPRING BRACKET
24	TR477099	1	SPRING TENSIONER
25	TR477100	1	SPRING HOOK
26	TR477333	4	WASHER M13
27	TR477129	22	Y-FLAIL SET, WITH BOLT, NUT
28	TR477334	1	SCREW M10X80 GR8.8
29	TR477101	2	HHCS M16X40
30	TR477335	8	SCREW M10X25 GR10.9
31	TR477336	4	SCREW M10X30 GR10.9
32	TR477337	4	SCREW M10X45 GR10.9
33	TR477338	4	SCREW M12X25 GR10.9
34	TR477102	7	HHCS M12X30
35	TR477103	2	HHCS M16X90
36	TR477339	4	SCREW M6X30 GR8.8
37	TR477104	2	HHCS M12X45
38	TR477105	20	FHCS M8X20
39	TR477106	9	FHCS M10X20
40	TR477340	4	NUT M10
41	TR477341	4	NUT M12

TR477642 - TRAXX RF SN00061 to SN00073 Pub 01-12 rev 06-20

CUTTING HEAD (PART 2)

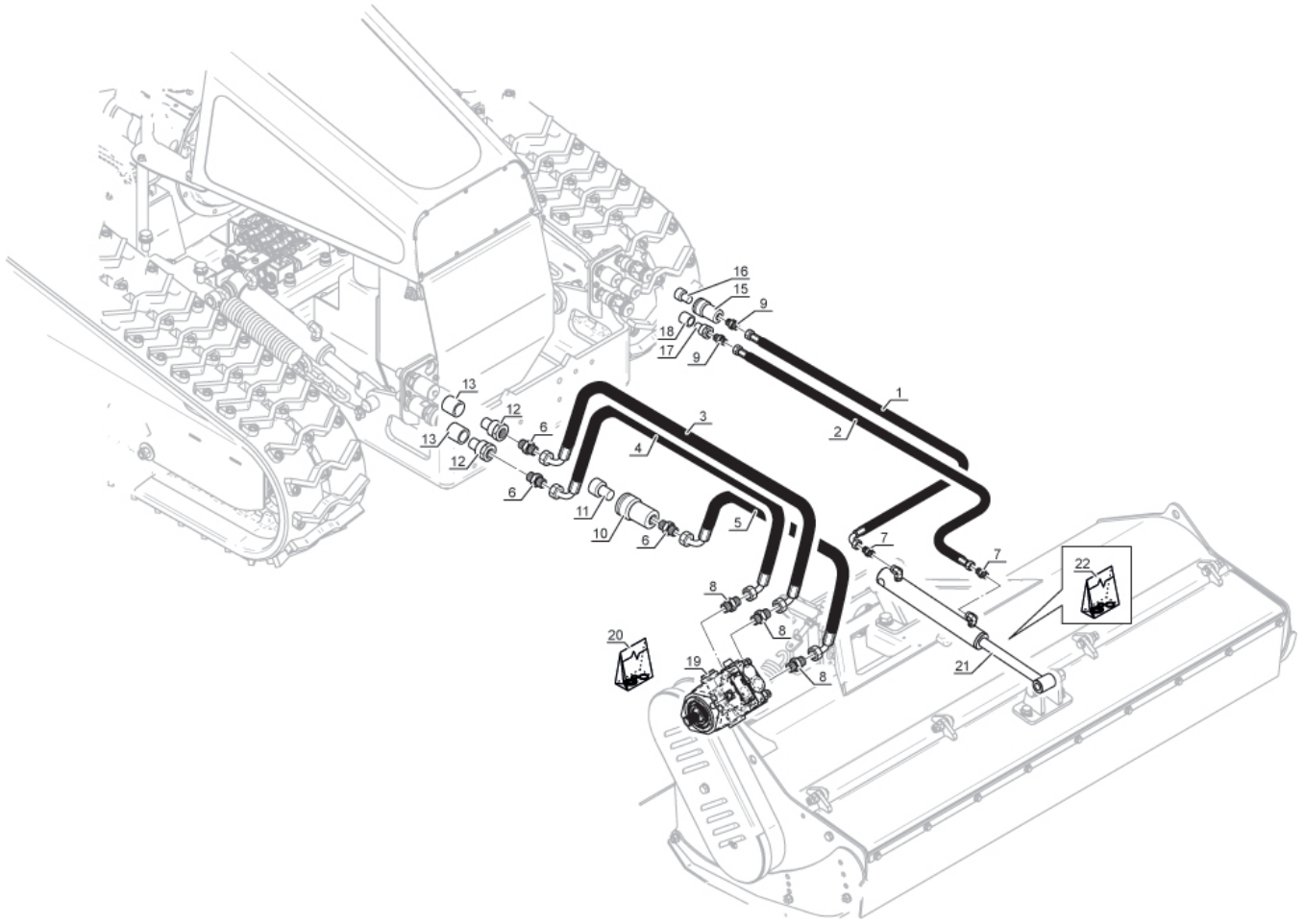


CUTTING HEAD (PART 2)

Continued...

ITEM	PART NO.	QTY.	DESCRIPTION
42	TR477107	1	TENSIONING SPRING
43	TR477342	4	LOCKNUT M6
44	TR477343	1	NUT, FLANGE, M10
45	TR477344	4	LOCKNUT M12
46	TR477345	2	LOCKNUT M16
47	TR477346	15	LOCKNUT M10
48	TR477108	1	LOCKNUT M16X1.5
49	TR477347	40	WASHER M10
50	TR477109	6	FLATWASHER M12
51	TR477110	3	FLATWASHER M16
52	TR477111	4	FLATWASHER M16
53	TR477112	3	LOCKWASHER M12
54	TR477113	2	LOCKWASHER M16
55	TR477325	4	LOCKWASHER M12
56	TR477348	1	WASHER M10
57	TR477114	1	GREASE FITTING M6X1
58	TR477115	2	GREASE FITTING M10X1
59	TR477116	2	FLANGE BEARING
60	TR477117	2	ROLLER BEARING
61	TR477118	1	LOWER SHAFT LOCK
62	TR477183	2	SNAP RING, 25MM
63	TR477349	1	SNAP RING, 30MM
64	TR477019	2	KEEPER, BEARING
65	TR477119	1	CUTTERSHAFT MOTOR
66	TR477120	1	UPPER SHAFT LOCK
67	TR477121	1	LOWER PULLEY
68	TR477122	1	UPPER PULLEY
69	TR477123	3	DRIVE BELT
70	TR477350	1	OIL SEAL, 30MM
71	TR477124	2	OIL SEAL
72	TR477125	2	SEAL KEEPER
73	TR477126	1	SWIVEL BUSHING
74	TR477127	1	KEEPER WASHER

CUTTING HEAD HYDRAULIC LINE P/N TR477667



ITEM	PART NO.	QTY.	DESCRIPTION
1	TR477615	1	HOSE, DOOR CLOSE
2	TR477616	1	HOSE, DOOR OPEN
3	TR477617	1	HOSE, MOTOR 1
4	TR477618	1	HOSE, MOTOR 2
5	TR477619	1	HOSE, MOTOR 3
6	TR477450	3	ADP HYD FTG 1/2 - 13/16
7	TR477581	2	ADP HYD FTG 1/4 - 9/16
8	TR477620	3	ADP HYD FTG 3/4 - 13/16
9	TR477590	2	ADP HYD FTG 3/8 - 9/16
10	TR477280	1	ADP HYD QD 1/2F VVS
11	TR477286	1	PLUG HYD QD 1/2M VV/VVS
12	TR477283	2	ADP HYD QD 1/2M VVS
13	TR477284	2	CAP HYD QD 1/2F VV/VVS
15	TR477279	1	ADP HYD QD 3/8F VV
16	TR477287	1	PLUG HYD QD 3/8M VV/VVS
17	TR477282	1	ADP HYD QD 3/8M VV
18	TR477285	1	CAP HYD QD 3/8F VV/VVS

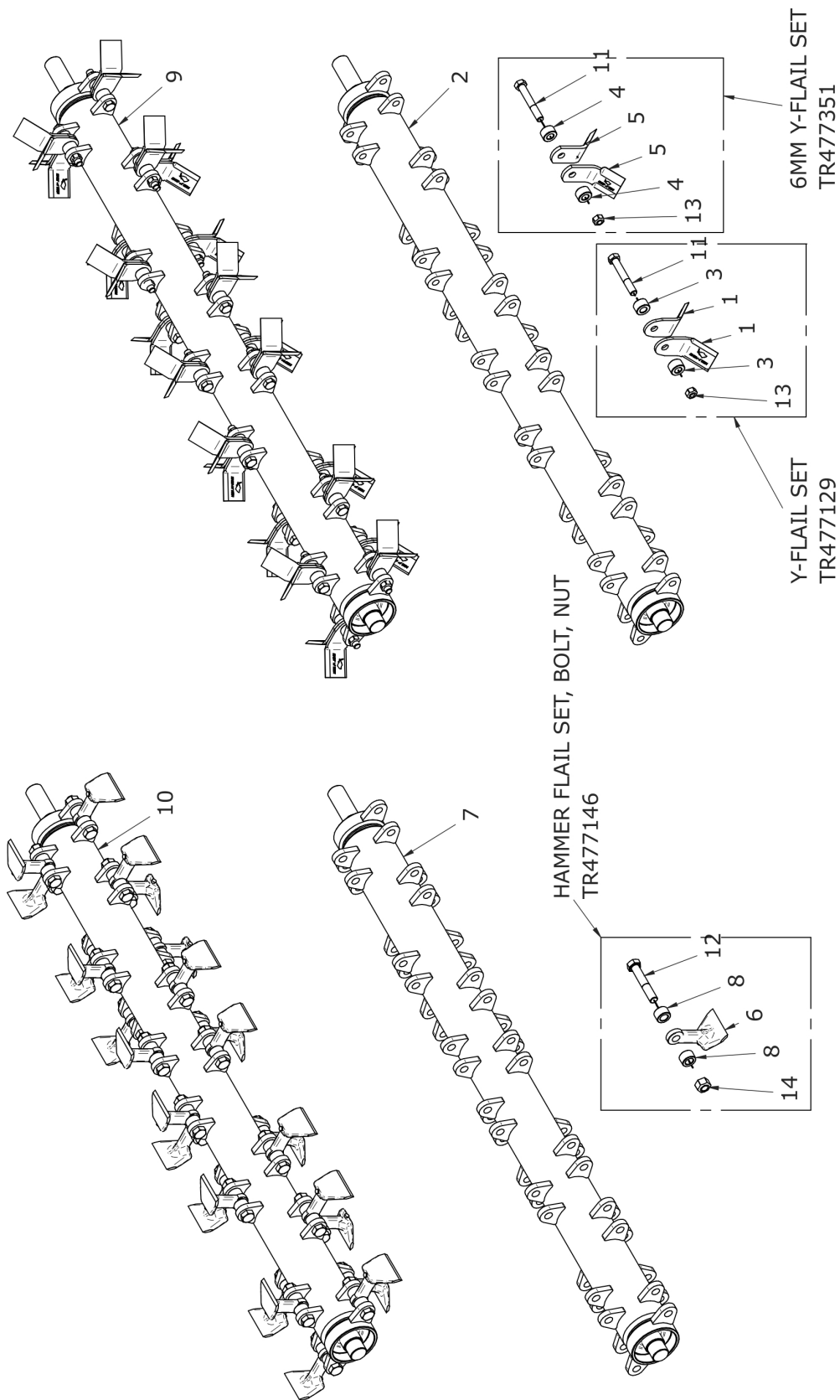
TR477642 - TRAXX RF SN00061 to SN00073 Pub 01-12 rev 06-20

CUTTING HEAD HYDRAULIC LINE P/N TR477667

Continued...

ITEM	PART NO.	QTY.	DESCRIPTION
19	TR477119	1	CUTTERSHAFT MOTOR
20	TR477667	1	KIT,GASKET,FLAIL HEAD MOTOR
21	TR477084	1	CYLINDER, DOOR
22	TR477960	1	SEAL KIT, DOOR CYLINDER

ROTOR AND CUTTING TOOLS



ROTOR AND CUTTING TOOLS

Continued...

ITEM	PART NO.	QTY.	DESCRIPTION
	TR477146	26	HAMMER FLAIL SET, BOLT, NUT
	TR477129	22	Y-FLAIL SET, WITH BOLT, NUT
	TR477351	22	6MM Y-FLAIL SET, BOLT, NUT
1	TR477352	44	Y-FLAIL
2	TR477353	1	Y-FLAIL ROTOR, NO KNIVES
3	TR477354	44	BUSHING, Y-FLAIL
4	TR477355	44	BUSHING, 6MM Y-FLAIL
5	TR477356	44	6MM Y-FLAIL
6	TR477357	26	HAMMER FLAIL
7	TR477358	1	HAMMER ROTOR, NO KNIVES
8	TR477359	52	BUSHING, HAMMER FLAIL
9	TR477128	1	ROTOR, Y-FLAILS
10	TR477001	1	ASY, CUTTERSHAFT, HAMMER KNIFE
11	TR477360	22	HHCS M12-1.25 X 80MM GR10.9
12	TR477361	26	HHCS M14-1.5 X 80MM GR10.9
13	TR477362	22	LOCKNUT M12-1.25 ZN
14	TR477180	26	LOCKNUT M14 X 1.5

MISCELLANEOUS PARTS

ITEM	PART NO.	QTY.	DESCRIPTION
1	TR477136	1	KIT, GREASE GUN
2	TR477135	1	BUTTON HEAD GREASE FITTING; INCLUDED IN GREASE GUN KIT TR477136
3	TR477137	1	KIT, BRAKE RELEASE/TOW
4	TR477141	2	PLATE, TENSION; INCLUDED IN BRAKE RELEASE/TOW KIT TR477137
5	TR477140	1	SPREADER BAR; INCLUDED IN BRAKE RELEASE/TOW KIT TR477137
6	TR477142	1	HYDRAULIC OIL 22L CONTAINER
7	TR477143	1	KIT, HIGH WEAR, Y-FLAILS; INCLUDES BLADES, GUARDS, SKID SHOES, BELTS, BEARINGS
8	TR477144	1	OPERATOR'S MANUAL
9	TR477147	1	KIT, HIGH WEAR, HAMMER FLAILS; INCLUDES BLADES, GUARDS, SKID SHOES, BELTS, BEARINGS
10	TR477153	1	KIT, REMOTE REPLACEMENT; INCLUDES REMOTE, ADDRESS KEYS
11	TR477363	1	KIT, REMOTE W/RECEIVER; INCLUDES REMOTE, RECEIVER
12	TR477155	1	SPRAY PAINT, TRAXX GREY
13	TR477156	1	SPRAY PAINT, TRAXX YELLOW
14	TR477364	1	DIPSTICK FOR ENGINE
15	TR477365	1	SHOULDER HARNESS FOR REMOTE; REPLACES LAP BAND
16	TR477763	1	KEY, POWER, ROBO-UNIT
17	TR478104	1	SHROUD, RADIATOR FAN

TR477642 - TRAXX RF SN00061 to SN00073 Pub 01-12 rev 06-20



TO THE OWNER/OPERATOR/DEALER

To keep your implement running efficiently and safely, read your manuals thoroughly and follow these directions and the Safety Messages in this Manual. The Table of Contents clearly identifies each section where you can easily find the information you need.

The OCCUPATIONAL SAFETY AND HEALTH ACT (1928.51 Subpart C) makes these minimum safety requirements of tractor operators:

REQUIRED OF THE OWNER

1. Provide a Roll-Over-Protective Structure that meets the requirements of this standard.
2. Provide seat belts that meet the requirements of this paragraph of this standard and SAE J4C.
3. Ensure that each employee uses such seat belt while the tractor is moving.
4. Ensure that each employee tightens the seat belt sufficiently to confine the employee to the protected area provided by the ROPS.

REQUIRED OF THE OPERATOR

1. Securely fasten seat belt if the tractor has a ROPS.
2. Where possible, avoid operating the tractor near ditches, embankments, and holes.
3. Reduce speed when turning, crossing slopes, and on rough, slick, or muddy surfaces.
4. Stay off slopes too steep for safe operation.
5. Watch where you are going, especially at row ends, on roads, and around trees.
6. Do not permit others to ride.
7. Operate the tractor smoothly, no jerky turns, starts, or stops.
8. Hitch only to the draw bar and hitch points recommended by the tractor manufacturer.
9. When the tractor is stopped, set brakes securely and use park lock, if available.



Keep children away from danger all day, every day...



Equip tractors with rollover protection (ROPS) and keep all machinery guards in place...



Please work, drive, play and live each day with care and concern for your safety and that of your family and fellow citizens.

ALAMO INDUSTRIAL

Limited Warranty

1. Limited Warranties

- 1.01. Alamo industrial warrants for one year from the purchase date to the original non-commercial, governmental, or municipal purchaser ("purchaser") and warrants for six months to the original commercial or industrial purchaser ("purchaser") that the goods purchased are free from defects in material or workmanship.
- 1.02. Manufacturer will replace for the purchaser any part or parts found, upon examination at one of its factories, to be defective under normal use and service due to defects in material or workmanship.
- 1.03. This limited warranty does not apply to any part of the goods which has been subjected to improper or abnormal use, negligence, alteration, modification, or accident, damaged due to lack of maintenance or use of wrong fuel, oil, or lubricants, or which has served its normal life. This limited warranty does not apply to any part of any internal combustion engine, or expendable items such as blades, shields, guards, or pneumatic tires except as specifically found in your operator's manual.
- 1.04. Except as provided herein, no employee, agent, dealer, or other person is authorized to give any warranties of any nature on behalf of manufacturer.

2. Remedies And Procedures

- 2.01. This limited warranty is not effective unless the purchaser returns the registration and warranty form to manufacturer within 30 days of purchase.
- 2.02. Purchaser claims must be made in writing to the authorized dealer ("dealer") from whom purchaser purchased the goods or an approved authorized dealer ("dealer") within 30 days after purchaser learns of the facts on which the claim is based.
- 2.03. Purchaser is responsible for returning the goods in question to the dealer.
- 2.04. If after examining the goods and/or parts in question, manufacturer finds them to be defective under normal use and service due to defects in material or workmanship, manufacturer will:
 - (A) repair or replace the defective goods or part(s) or
 - (B) reimburse purchaser for the cost of the part(s) and reasonable labor charges (as determined by manufacturer) if purchaser paid for the repair and/or replacement prior to the final determination of applicability of the warranty by manufacturer. The choice of remedy shall belong to manufacturer.
- 2.05. Purchaser is responsible for any labor charges exceeding a reasonable amount as determined by manufacturer and for returning the goods to the dealer, whether or not the claim is approved. Purchaser is responsible for the transportation cost for the goods or part(s) from the dealer to the designated factory.

3. Limitation Of Liability

- 3.01. Manufacturer disclaims any express (except as set forth herein) and implied warranties with respect to the goods including, but not limited to, merchantability and fitness for a particular purpose.
- 3.02. Manufacturer makes no warranty as to the design, capability, capacity, or suitability for use of the goods.
- 3.03. Except as provided herein, manufacturer shall have no liability or responsibility to purchaser or any other person or entity with respect to any liability, loss, or damage caused or alleged to be caused directly or indirectly by the goods including, but not limited to, any indirect, special, consequential, or incidental damages resulting from the use or operation of the goods or any breach of this warranty. Notwithstanding the above limitations and warranties, manufacturer's liability hereunder for damages incurred by purchaser or others shall not exceed the price of the goods.
- 3.04. No action arising out of any claimed breach of this warranty or transactions under this warranty may be brought more than two (2) years after the cause of action has occurred.

4. Miscellaneous

- 4.01. Proper venue for any lawsuits arising from or related to this limited warranty shall be only in Guadalupe county, Texas.
- 4.02. Manufacturer may waive compliance with any of the terms of this limited warranty, but no waiver of any terms shall be deemed to be a waiver of any other term.
- 4.03. If any provision of this limited warranty shall violate any applicable law and is held to be unenforceable, then the invalidity of such provision shall not invalidate any other provisions herein.
- 4.04. Applicable law may provide rights and benefits to purchaser in addition to those provided herein.

Keep for your records

Attention: Purchaser should fill in the blanks below for his reference when buying repair parts and/or for proper machine identification when applying for warranty.

Alamo Industrial Implement Model _____ Serial Number _____
Date Purchased _____ Dealer _____

Attention:
Read your operator's manual



ALAMO INDUSTRIAL
1502 E. Walnut
Seguin, Texas 78155
830-379-1480



BUILT SHARPER®

An Alamo Group Company

1502 E. Walnut St.
Seguin, Texas 78155



Sales and Marketing

Tel 800.882.5762

Fax 830.379.0864

support@alamo-industrial.com

Warranty Registration/Claims

www.alamoparts.com

Return Authorizations

Online Part Orders

Technical Information

www.alamoparts.com

Tel 800.356.6286

Fax 800.322.5141

www.alamo-industrial.com

