

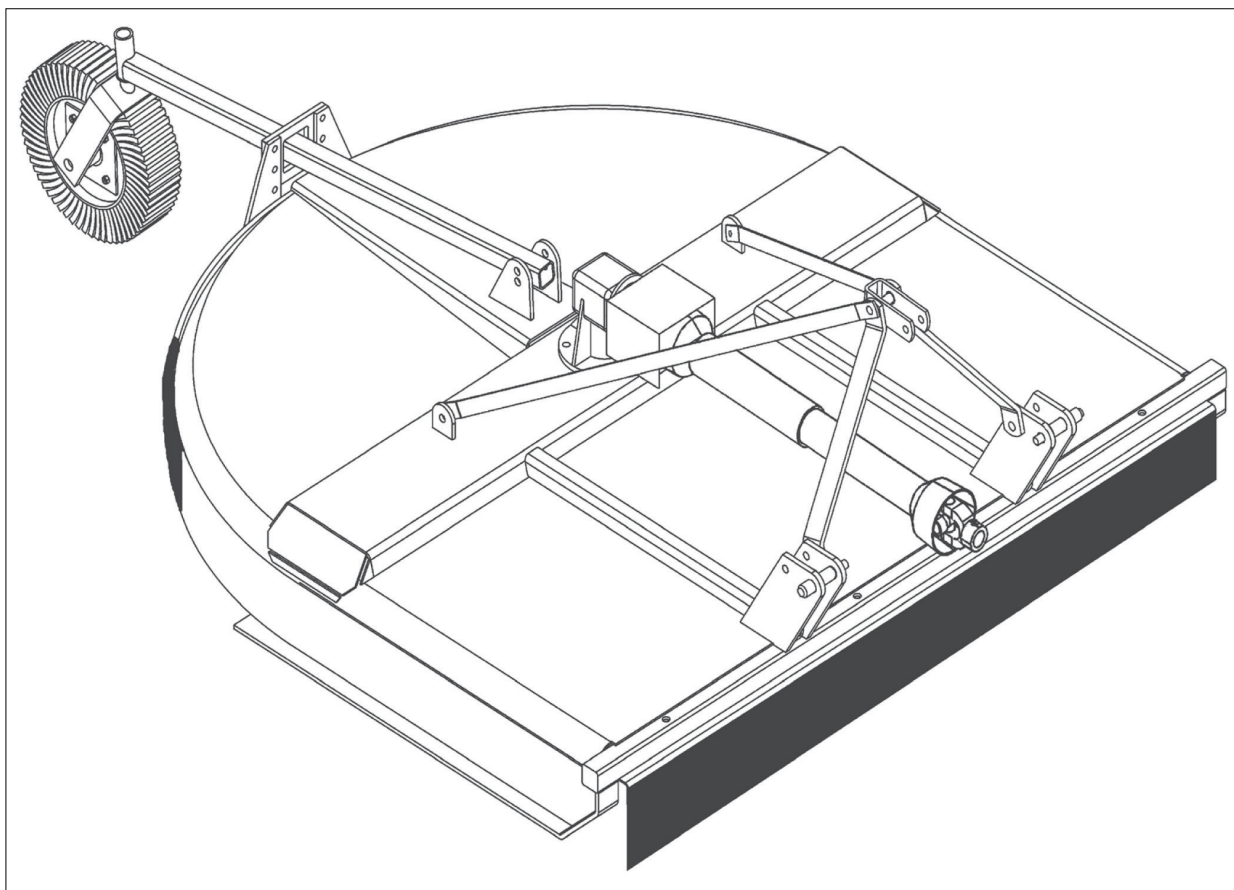


**A60
A72
A72SD**
Rotary Mower

Rev 04-13

Part No. 00757274P

PARTS MANUAL



ALAMO INDUSTRIAL

1502 E. Walnut
Seguin, Texas 78155
830-372-9595

¡ATENCIÓN!

LEA EL INSTRUCTIVO

Si No Lee Ingles, Pida Ayuda a Alguien
Que Si Lo Lea Para Que le Traduzca las
Medidas de Seguridad.



An Operator's Manual was shipped with the equipment in the Manual Canister. This Operator's Manual is an integral part of the safe operation of this machine and must be maintained with the unit at all times. **READ, UNDERSTAND, and FOLLOW** the Safety and Operation Instructions contained in this manual before operating the equipment. If the Operator's Manual is not with the equipment, contact your dealer or Alamo Industrial (800-356-6286) to obtain a Free copy before operating the equipment.

TO THE OWNER/OPERATOR/DEALER

All implements with moving parts are potentially hazardous. There is no substitute for a cautious, safe-minded operator who recognizes the potential hazards and follows reasonable safety practices. The manufacturer has designed this implement to be used with all its safety equipment properly attached to minimize the chance of accidents.

BEFORE YOU START!! Read the safety messages on the implement and shown in your manual.
Observe the rules of safety and common sense!



DANGER

FAILING TO FOLLOW SAFETY MESSAGES AND OPERATING INSTRUCTION CAN CAUSE SERIOUS BODILY INJURY OR EVEN DEATH TO OPERATOR AND OTHERS IN THE AREA.

| | | | |
|---|---|--|---|
| 1.  | 2. NO RIDERS. NO CHILDREN OPERATORS.  | 3. USE SAFETY SHOES, HARD HAT, SAFETY GLASSES, SEAT BELTS, ROPS & OPS.  | 4. BLOCK UP SECURELY BEFORE WORKING UNDER.  |
|---|---|--|---|

1. Study and understand Operator's Manuals, Safety Decals, and Instructional Decals for tractor and implement to prevent misuse, abuse, and accidents. Practice before operating in a confined area or near passersby.
• Learn how to stop engine suddenly in an emergency. Be alert for passersby and especially children.

2. Allow no children on or near folding mower or tractor. Allow no riders on tractor or implement. Falling off may cause serious injury or death from being run over by tractor or mower or contact with rotating blades.

3. Operate only with tractor having Roll-Over Protective Structure (ROPS) and with seat belt securely fastened to prevent injury and possible death from falling off or tractor overturn.
• Personal Protective Equipment such as Hard Hat, Safety Glasses, Safety Shoes, & Ear Plugs are recommended.

4. Block up or support raised machine and all lifted components securely before putting hands or feet under or working underneath any lifted component to prevent crushing injury or death from sudden dropping or inadvertent operation of controls. Make certain area is clear before lowering or folding.

5. Before transporting, put Lift Lever in detent or full-lift position. Install Transport Safety Devices securely on folding mowers. Put Booms securely in Transport Rest.
• Folding and Boom Mowers have raised center of gravity. Slow down when turning and on hillsides.

6. Make certain that SMV sign, warning lights, and reflectors are clearly visible. Follow local traffic codes.

7. Never operate with Cutting Head or Folding Section raised if passersby, bystanders, or traffic are in the area to reduce possibility of injury or death from objects thrown by Blades under Guards or mower structure.

8. Before dismounting, secure implement in transport position or lower to ground.
• Put tractor in park or set brake, disengage PTO, stop engine, remove key, and wait until noise of rotation has ceased to prevent crushing by entanglement in rotating parts which could cause injury or death.
• Never mount or dismount a moving vehicle. Crushing from runover may cause serious injury or death.

| | | | |
|--|--|--|--|
| 5. TRANSPORT SAFELY, LOCK UP.  | 6. USE SMV, LIGHTS, & REFLECTORS.  | 7. DO NOT OPERATE WITH CUTTER OR WING RAISED  | 8. DO NOT MOUNT OR DISMOUNT WHILE MOVING.  |
|--|--|--|--|

02967827

WARRANTY INFORMATION:

Read and understand the complete Warranty Statement found in this Manual. Fill out the Warranty Registration Form in full and return it within 30 Days. Make certain the Serial Number of the Machine is recorded on the Warranty Card and on the Warranty Form that you retain. The use of "will-fit" parts will void your warranty and can cause catastrophic failure with possible injury or death.

BOLT TORQUE

Mounting procedures for mowers will require a significant amount of bolt nut and washer installation.

Frame and structure mounting bolts should be installed using *Red Loctite*, and torqued to the dry values listed in the torque chart based on the bolt size and hardness.

Other structures such as pump mounting bolts should be installed with *Blue Loctite* and torqued to the dry values indicated in the chart.

Bolt tightness should be completed with and checked with a suitable torque wrench.

Torque checks should be completed throughout the life of the mower in accordance with the maintenance chart provided in this manual.



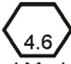
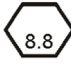
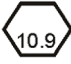
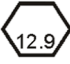
Loose bolts on a frame or in a casting may be a result of:

- Vibration from the mower due to imbalance of the mower blades
- Pulled threads due to over tightening
- Distortion of the hole due to under tightening during installation

Bolts broken or sheared in the mounting structure or tractor may be the result of:

- Improper alignment of the Mounting Plate or Structure such that it is not sitting flat on the mating surface
- Distortion of the bolt due to over-tightening
- Under tightening of the bolts

Check the bolt torque during installation and prior to delivery with a suitable torque wrench.

| Proper Torque Values for Standard Bolts | | | Proper Torque Values for Metric Bolts | | | | |
|---|---|---|---------------------------------------|---|---|---|---|
| Bolt Diameter |  |  | Bolt Diameter |  |  |  |  |
| | Head Marking Three Lines Grade Five | Head Marking Six Lines Grade Eight | | Head Marking 4.6 | Head Marking 8.8 or 9.8 | Head Marking 10.9 | Head Marking 12.9 |
| | Pound - Foot Value Dry | Pound - Foot Value Dry | | Pound - Foot Value Dry | Pound - Foot Value Dry | Pound - Foot Value Dry | Pound - Foot Value Dry |
| 1/4" | 7 | 10 | 6mm | 3 | 7 | 9 | 10 |
| 5/16" | 15 | 22 | 8mm | 6.2 | 16 | 23 | 24 |
| 3/8" | 26 | 39 | 10mm | 12 | 32 | 45 | 47 |
| 7/16" | 42 | 60 | 12mm | 21 | 55 | 79 | 81 |
| 1/2" | 64 | 88 | 14mm | 34 | 88 | 126 | 130 |
| 9/16" | 100 | 134 | 16mm | 53 | 137 | 196 | 202 |
| 5/8" | 128 | 180 | 18mm | 73 | 189 | 270 | 279 |
| 3/4" | 227 | 320 | 20mm | 104 | 267 | 382 | 394 |
| 7/8" | 365 | 515 | 22mm | 141 | 364 | 520 | 537 |
| 1" | 547 | 772 | 24mm | 179 | 461 | 660 | 680 |
| | | | 27mm | 262 | 676 | 968 | 998 |
| | | | 30mm | 355 | 917 | 1312 | 1353 |

To get Newton-Meters multiply pound-foot of torque by 1.356

CHANGE PAGES

[illegible]

CHANGE PAGES

The following is a listing of pages that have been changed since the latest publication date for the overall document.

PARTS SECTION

PARTS ORDERING GUIDE

The following instructions are offered to help eliminate needless delay and error in processing purchase orders for the equipment in this section.

1. The Parts Section is prepared in logical sequence and grouping of parts that belong to the basic machine featured in this manual. Part Numbers and Descriptions are given to help locate the parts and quantities required.
2. The Purchase Order must include the name and address of the person or organization ordering the parts, who should be charged, and if possible, the serial number of the machine for which the parts are ordered.
3. The Purchase Order must clearly list the quantity of each part, the complete and correct part number (be sure to include all periods), and the basic name of the part.
4. The Manufacturer reserves the right to substitute parts where applicable.
5. Some parts are unlisted items which are special production items not normally stocked and are subject to special handling. Request a quotation for such parts before sending a Purchase Order.
6. The Manufacturer reserves the right to change prices without prior notice.



For maximum safety and to guarantee optimum product reliability, always use genuine Alamo Industrial Parts. The use of inferior replacement parts may cause premature or catastrophic failure which could result in serious injury or death. Direct any questions regarding parts to:



ALAMO INDUSTRIAL

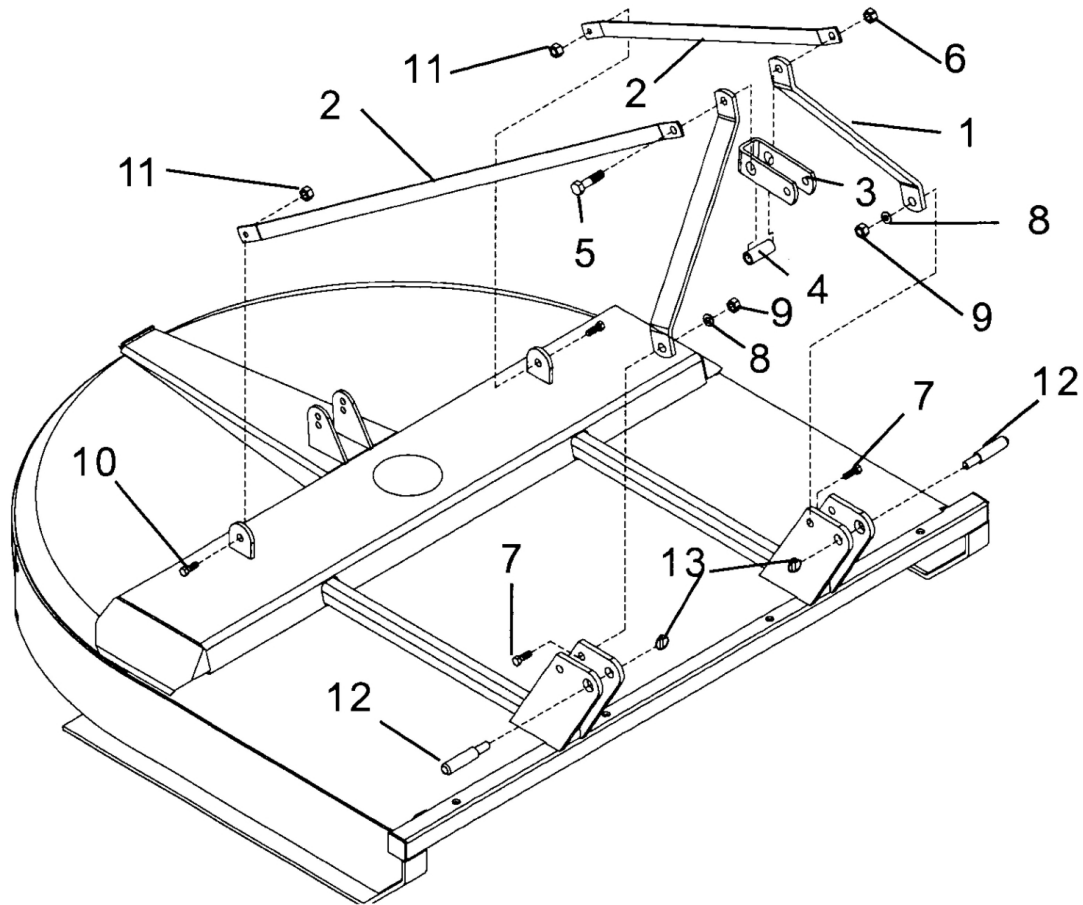
1502 E. Walnut
Seguin, Texas 78155
830-379-1480



PART NAME INDEX

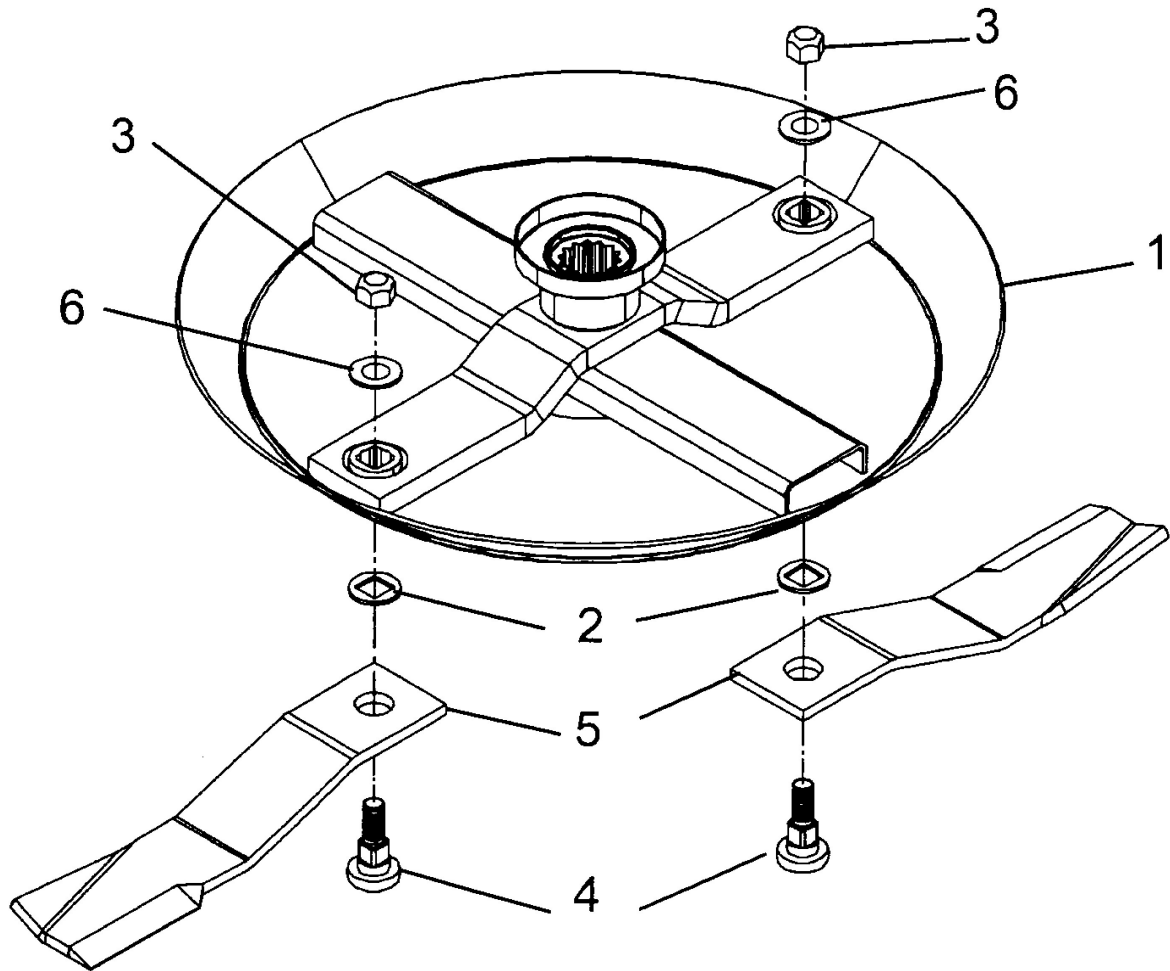
| | |
|--|----|
| A-FRAME ASY..... | 4 |
| BLADE CARRIER ASY - A60 & A72 (STANDARD)..... | 5 |
| BLADE CARRIER ASY - A72 (OPTIONAL HD)..... | 6 |
| CASTER WHL & FORK ASY - SN A60-01955, A72-02753, A72SD-01177 & DOWN..... | 8 |
| CASTER WHL & FORK ASY - SN A60-01956, A72-02754, A72SD-01178 & UP..... | 10 |
| CASTER WHL BEAM MNTG ASY - A60..... | 12 |
| CASTER WHL BEAM MNTG ASY - A72 & A72SD..... | 13 |
| CHAIN GUARD ASY - FRONT A60..... | 14 |
| CHAIN GUARD ASY - FRONT A72..... | 15 |
| CHAIN GUARD ASY - REAR A60..... | 16 |
| CHAIN GUARD ASY - REAR A72..... | 17 |
| CLUTCH ASY - PN 00775331 CAT IV (STANDARD)..... | 18 |
| CLUTCH ASY - PN 00775382 CAT V (OPTION)..... | 19 |
| DEFLECTOR ASY - FRONT A60..... | 20 |
| DEFLECTOR ASY - FRONT A72..... | 21 |
| DEFLECTOR ASY - REAR A60..... | 22 |
| DEFLECTOR ASY - REAR A72..... | 24 |
| DRIVELINE ASY - PN 00775385 CAT IV / 35R (STANDARD)..... | 26 |
| DRIVELINE ASY - PN 00775433 CAT V / 44R (OPTION)..... | 27 |
| GEARBOX ASY - PN 00769912 (OLD STYLE)..... | 28 |
| GEARBOX ASY - PN 00769912C (NEW STYLE)..... | 30 |
| GEARBOX SHIELD ASY..... | 32 |
| OFFSET HITCH ADAPTER (OPTION)..... | 34 |
| SKID SHOE - A60..... | 36 |
| SKID SHOE - A72..... | 37 |

A-FRAME ASY



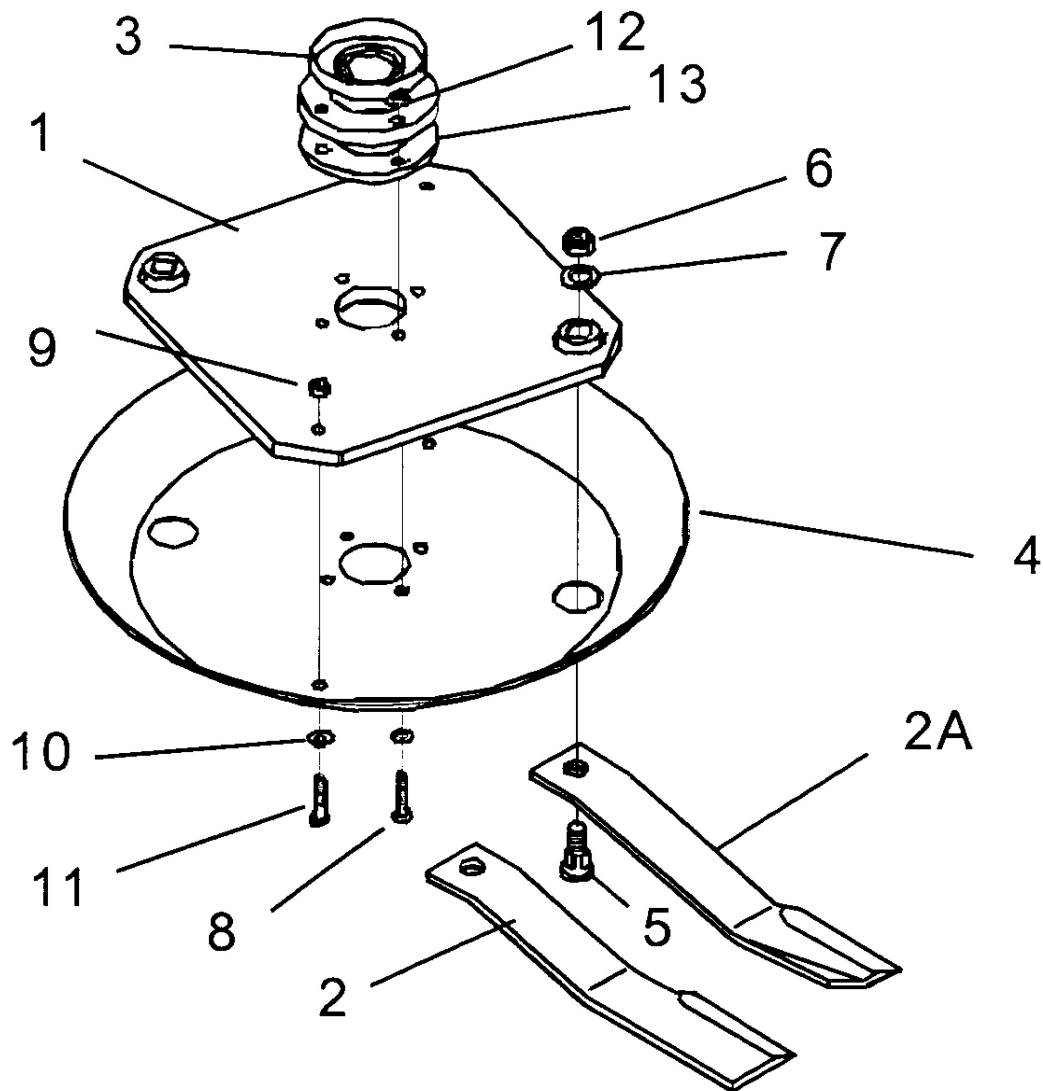
| ITEM | PART NO. | QTY. | DESCRIPTION |
|------|-----------|------|------------------------------------|
| 1 | 00773183 | 2 | A-FRAME BAR, FRONT |
| 2 | 00773189 | 2 | A-FRAME BRACE BAR, REAR (A60 ONLY) |
| | 00773190 | 2 | A-FRAME BRACE BAR, REAR (A72 ONLY) |
| 3 | 00757949 | 1 | LINK, TOP |
| 4 | 00757953 | 1 | BUSHING, 1-1/4 |
| 5 | 02959587 | 1 | BOLT, HEX HEAD 3/4 |
| 6 | 00037200 | 1 | LOCKNUT, TOPLOCK 3/4-NC GRC PL |
| 7 | 02945500 | 2 | WLDMT, TURNING ARM/STOP - CABS |
| 8 | 00756077 | 2 | WASHER, 5/8 HARDENED |
| 10 | 02675800 | 2 | BOLT, HEX HEAD 5/8-11UNC 1-1/2 PL5 |
| 11 | 00695100 | 2 | NUT, TOPLOCK 5/8 NC PLC |
| 12 | 4410212A | 2 | WRIST PIN, 7/8 |
| | 4410212AS | 2 | WRIST PIN, 1-1/8 |
| 13 | 2196 | 2 | CLIP (LYNCH PIN), 13/32 |

BLADE CARRIER ASY - A60 & A72 (STANDARD)



| ITEM | PART NO. | QTY. | DESCRIPTION |
|------|-----------|------|---------------------------------|
| 1 | 00768485 | 1 | BLADE CARRIER WLDMNT, PAN |
| 2 | 00758579 | 2 | WASHER, 1-9/64 |
| 3 | 5JRC16140 | 2 | LOCKNUT, TOPLOCK 1 |
| 4 | 8227 | 2 | BLADE BOLT, SQ SHOULDER |
| 5 | 8588 | 1 | BLADE SET, AG-72 CCW (SET OF 2) |
| | 8589 | 1 | BLADE SET, AG-60 CCW (SET OF 2) |
| 6 | 9216 | 2 | WASHER, HARDENED |

BLADE CARRIER ASY - A72 (OPTIONAL HD)



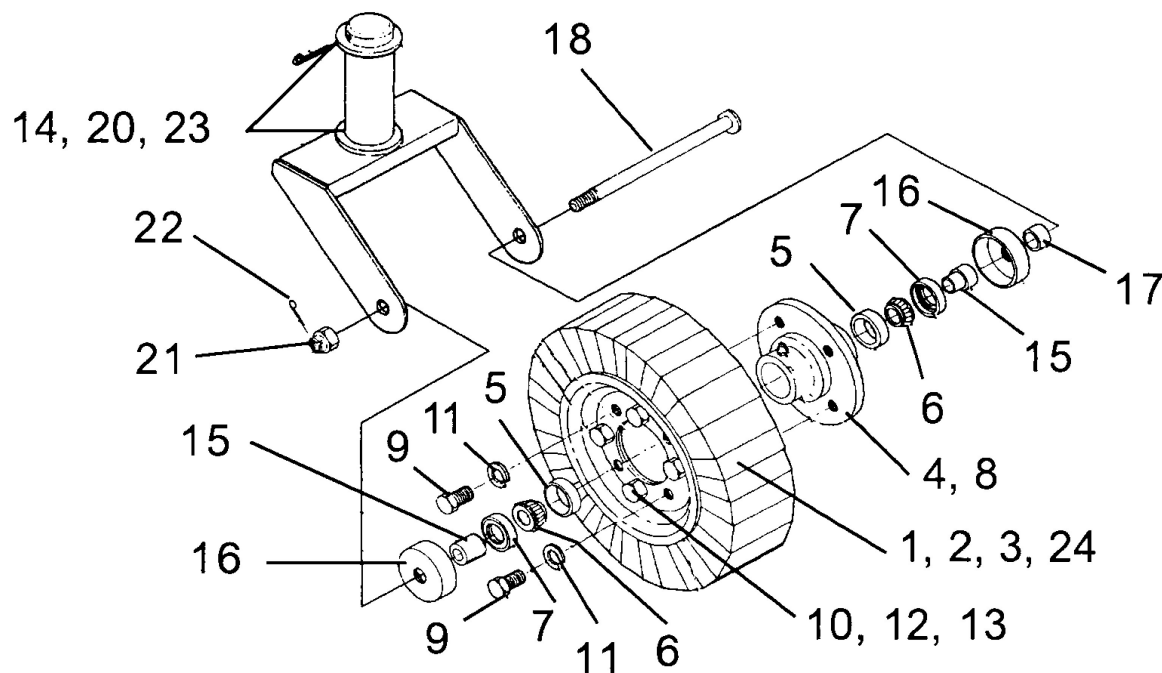
| ITEM | PART NO. | QTY. | DESCRIPTION |
|------|-----------|------|--------------------------------------|
| 1 | 00771704 | 1 | BLADE CARRIER WLDMNT, AG-72 (OPTION) |
| 2 | 00748764 | 2 | BLADES, FLAT AG-72 (OPTION) |
| | 00771705 | 2 | BLADE, FAN AG-72 (OPTION) |
| 3 | 00772016 | 1 | BLADE HUB & FLANGE WLDMNT |
| 4 | 582012 | 1 | PAN |
| 5 | 8227 | 2 | BLADE BOLT, SQ SHOULDER |
| 6 | 5JRC16140 | 2 | LOCKNUT, TOPLOCK 1 |
| 7 | 9216 | 2 | WASHER, HARDENED |
| 8 | 00703200 | 4 | BOLT, HEX HEAD 5/8 |
| 9 | 00749136 | 4 | LOCKNUT, TOPLOCK 5/8 |

BLADE CARRIER ASY - A72 (OPTIONAL HD)

Continued...

| ITEM | PART NO. | QTY. | DESCRIPTION |
|------|------------|------|-------------------------|
| 10 | 00756077 | 6 | WASHER, 5/8: HARDENED |
| 11 | 7AH5101816 | 2 | BOLT, HEX HEAD 5/8 |
| 12 | 00695100 | 4 | NUT, TOPLOCK 5/8 NC PLC |
| 13 | 00768521 | 1 | PLATE, BLADE SPACER |

CASTER WHL & FORK ASY - SN A60-01955, A72-02753, A72SD-01177 & DOWN

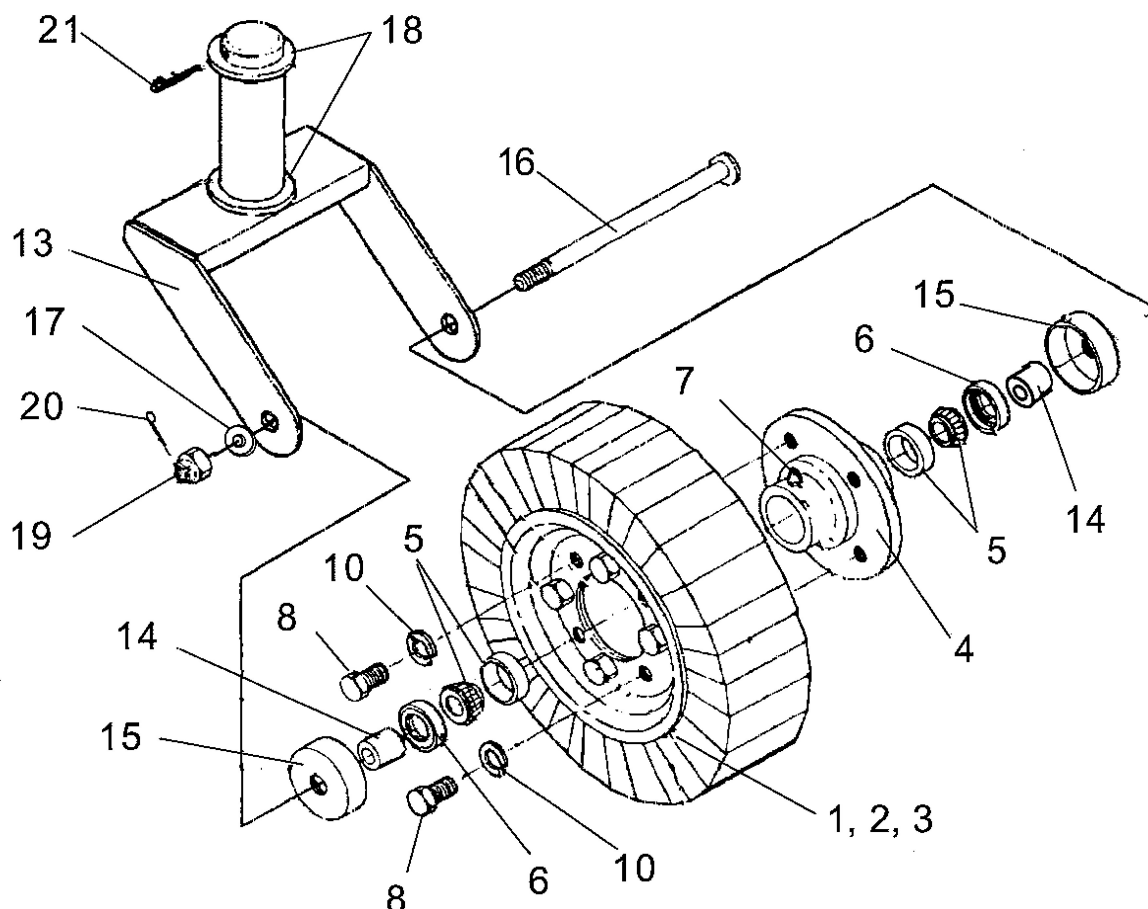


| ITEM | PART NO. | QTY. | DESCRIPTION |
|------|------------|------|--|
| | 0585020200 | 1 | CASTER FORK & WHL ASY, (USE 00776220 AS REPLACEMENT ASY) |
| 1 | 373024 | 1 | WHEEL, TIRE & HUB |
| 2 | 373024A | 1 | TIRE, 4 X 8 LAMINATED |
| 3 | 373024B | 1 | WHEEL, 4 X 8 W/NUTS |
| 4 | 373024C | 1 | HUB, W/BRG CUPS & GREASE FITTING |
| | 373024D | - | HUB ASY |
| 5 | 373024G | 2 | BEARING CUP |
| 6 | 00013701 | 2 | BEARING CONE |
| 7 | 373024E | 2 | SEAL |
| 8 | 17C1792B | - | GREASE FITTING, SCREW IN TYPE |
| | 00600000 | - | GREASE FITTING, DRIVE IN TYPE |
| 9 | 7A8208 | 4 | BOLT, HEX HEAD 1/2 |
| 10 | 7A6166 | 4 | BOLT, HEX HEAD 3/8 |
| 11 | 13800 | 4 | LOCK WASHER |
| 12 | 00012101 | 4 | LOCKWASHER, 3/8 |
| 13 | 00013901 | 4 | NUT, HEX (REPLACES P/N 4378) |
| 14 | 0585020210 | 1 | CASTER FORK WLDMNT |
| 15 | 37302C2C | 2 | SHOULDER BUSHING SLEEVE |
| 16 | 37302D2B | 2 | CAP, DUST HUB |
| 17 | 511016 | 2 | SPACER BUSHING |
| 18 | 37302D2A | 1 | SPINDLE BOLT |

CASTER WHL & FORK ASY - SN A60-01955, A72-02753, A72SD-01177 & DOWN**Continued...**

| ITEM | PART NO. | QTY. | DESCRIPTION |
|-------------|-----------------|-------------|--------------------------|
| 19 | 15B1200 | 1 | WASHER, 3/4 |
| 20 | 15B2400 | 2 | FLATWASHER, NARROW 1-1/2 |
| 21 | 5E12160 | 1 | NUT, CASTLE 3/4 |
| 22 | 1621/2012 | 1 | COTTER PIN, 5/32 |
| 23 | 00758899 | 1 | COTTER PIN, 3/8 |
| 24 | 373024H | 1 | WHEEL & TIRE ASY |

CASTER WHL & FORK ASY - SN A60-01956, A72-02754, A72SD-01178 & UP

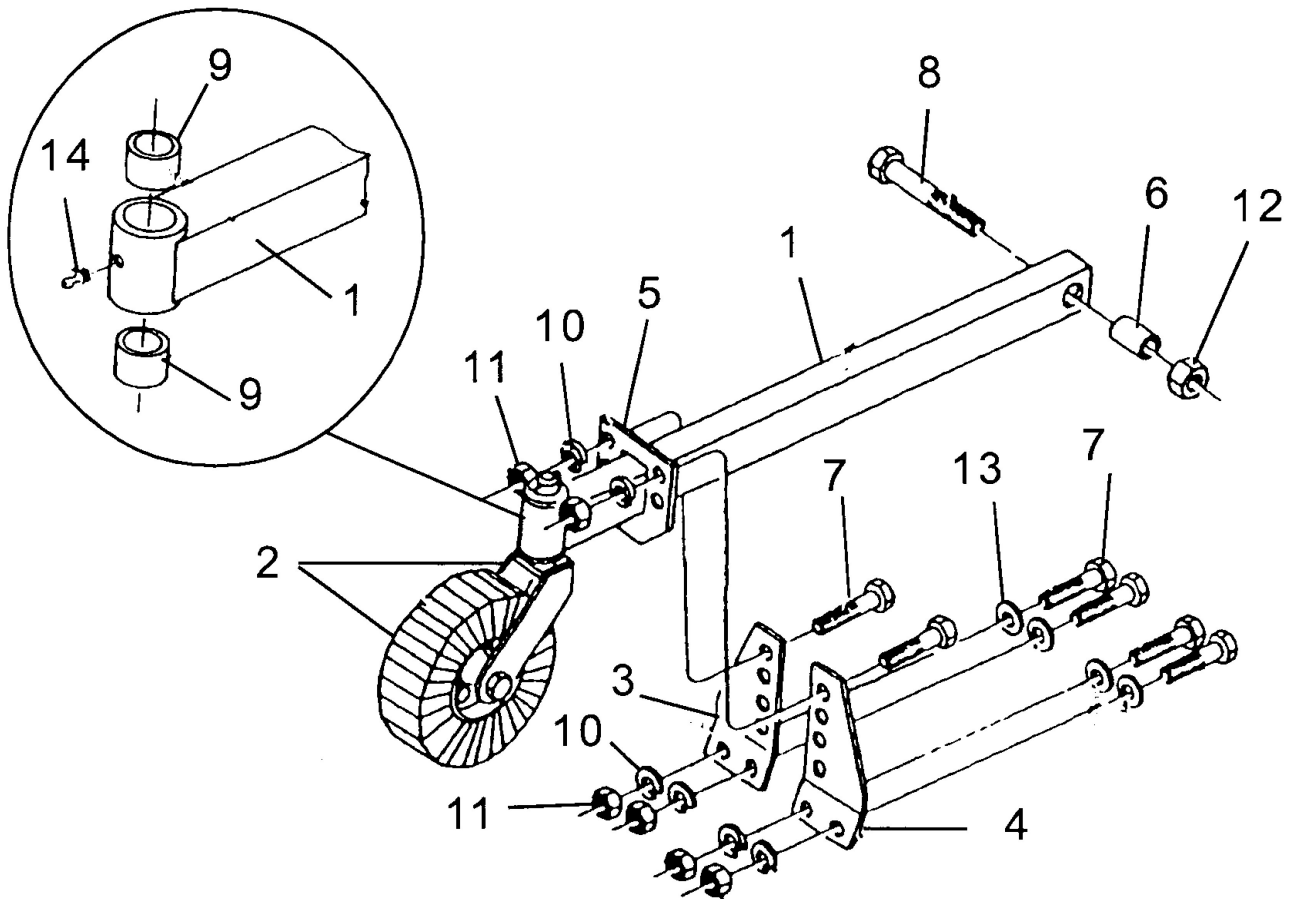


| ITEM | PART NO. | QTY. | DESCRIPTION |
|------|------------|------|--------------------------------|
| | 00776220 | - | CASTER FORK & WHL ASY |
| 1 | 373024H | 1 | WHEEL & TIRE ASY |
| 2 | 373024A | 1 | TIRE, 4 X 8 LAMINATED |
| 3 | 373024B | 1 | WHEEL, 4 X 8 W/NUTS |
| 4 | 00776214 | 1 | HUB, 4 BOLT |
| 5 | 00776213 | 2 | BEARING, CUP & CONE |
| 6 | 00776219 | 2 | SEAL |
| 7 | 00772082 | 1 | GREASE FITTING, M8 X 1 |
| 8 | 00776216 | 4 | BOLT, HEX HEAD M12-P1.5 X 25MM |
| 9 | 7A6166 | 4 | BOLT, HEX HEAD 3/8 |
| 10 | 00776215 | 4 | LUG BOLT FLAT WASHER |
| 11 | 00012101 | 4 | LOCKWASHER, 3/8 |
| 12 | 00013901 | 4 | NUT, HEX 3/8 |
| 13 | 0285020210 | 1 | CASTER FORK WELDMENT |
| 14 | 00772017 | 2 | BUSHING, SPINDLE STEP |

CASTER WHL & FORK ASY - SN A60-01956, A72-02754, A72SD-01178 & UP**Continued...**

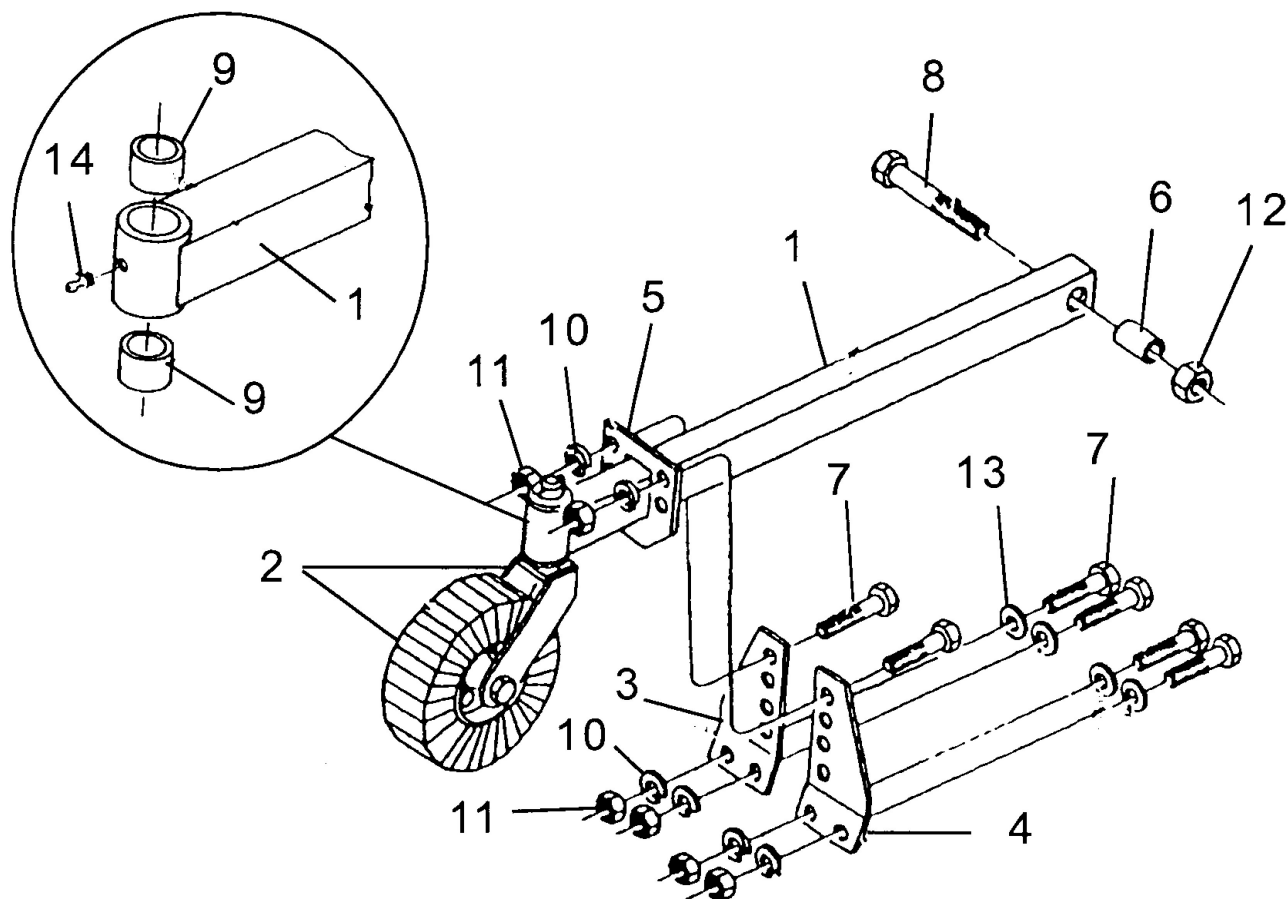
| ITEM | PART NO. | QTY. | DESCRIPTION |
|-------------|-----------------|-------------|--------------------------|
| 15 | 00772018 | 2 | DUST CAP |
| 16 | 00776211 | 1 | SPINDLE BOLT |
| 17 | 02822500 | 1 | FLATWASHER, 1 |
| 18 | 15B2400 | 2 | FLATWASHER, NARROW 1-1/2 |
| 19 | 00776212 | 1 | SPINDLE NUT |
| 20 | 00771620 | 1 | COTTER PIN, 5/32 |
| 21 | 00758899 | 1 | COTTER PIN, 3/8 |

CASTER WHL BEAM MNTG ASY - A60



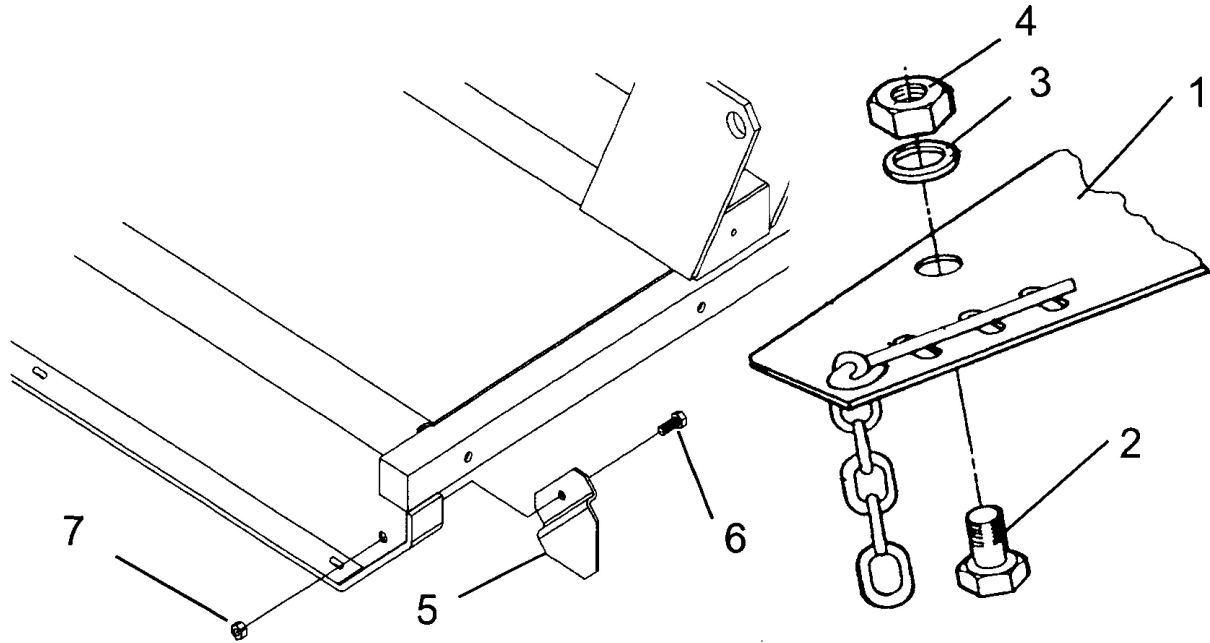
| ITEM | PART NO. | QTY. | DESCRIPTION |
|------|------------|------|--|
| 1 | 00775627 | 1 | TAILWHEEL BEAM WLDMNT AG-60 |
| 2 | 0585020200 | 1 | CASTER FORK & WHL ASY, SN A60-01955, A72-02753 & A72SD- 01177 & DOWN |
| | 00776220 | 1 | CASTER FORK & WHL ASY, SN A60-01956, A72-02754 & A72SD- 01178 & UP |
| 3 | 0585020002 | 1 | SUPPORT BRACKET, LH |
| 4 | 0585020001 | 1 | SUPPORT BRACKET, RH |
| 5 | 0585020300 | 1 | BRACKET, POSITION |
| 6 | 0585021101 | 1 | SPACER |
| 7 | 7A81312 | 6 | BOLT, HEX HEAD 1/2 |
| 8 | 7A101140 | 1 | BOLT, HEX HEAD 5/8 |
| 9 | 361129 | 2 | BUSHING |
| 10 | 00001300 | 6 | LOCKWASHER, 1/2 |
| 11 | 00001200 | 6 | NUT, HEX 1/2 |
| 12 | 00695100 | 1 | NUT, TOPLOCK 5/8 NC PLC |
| 13 | 15B800 | 4 | WASHER, 1/2 |
| 14 | 651062F | 1 | GREASE FITTING (DRIVE IN TYPE) |

CASTER WHL BEAM MNTG ASY - A72 & A72SD



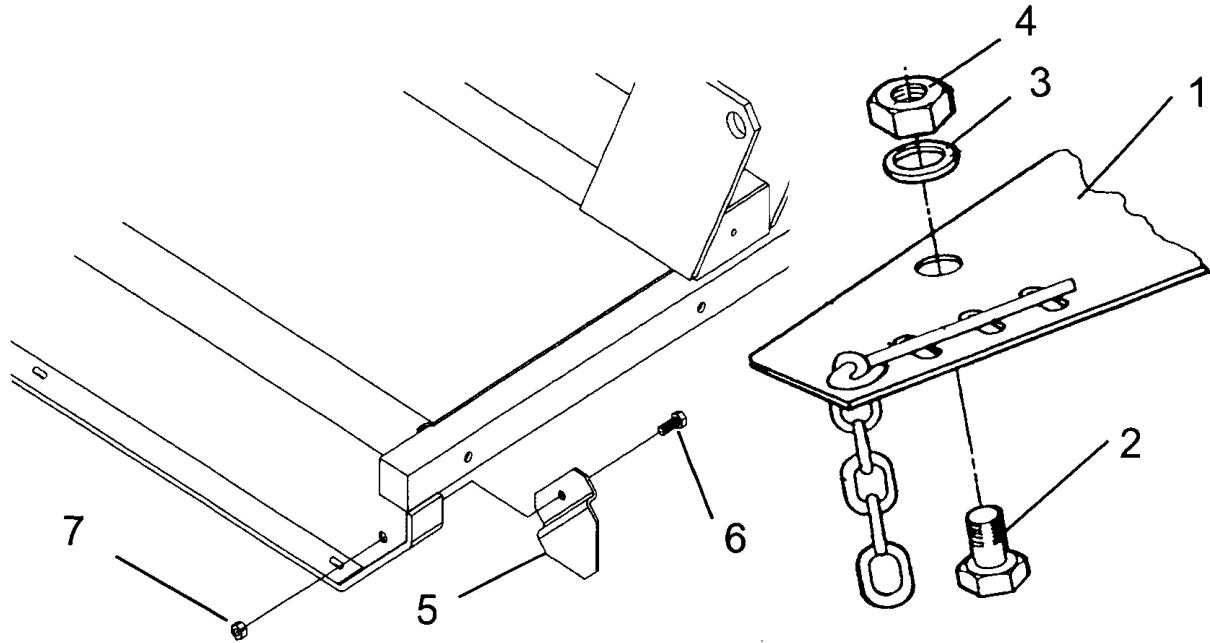
| ITEM | PART NO. | QTY. | DESCRIPTION |
|------|------------|------|--|
| 1 | 00775626 | 1 | TAILWHEEL BEAM WLDMNT AG-72 |
| 2 | 0585020200 | 1 | CASTER FORK & WHL ASY, SN A60-01955, A72-02753 & A72SD- 01177 & DOWN |
| | 00776220 | 1 | CASTER FORK & WHL ASY, SN A60-01956, A72-02754 & A72SD- 01178 & UP |
| 3 | 0585020002 | 1 | SUPPORT BRACKET, LH |
| 4 | 0585020001 | 1 | SUPPORT BRACKET, RH |
| 5 | 0585020300 | 1 | BRACKET, POSITION |
| 6 | 0585021101 | 1 | SPACER |
| 7 | 7A81312 | 6 | BOLT, HEX HEAD 1/2 |
| 8 | 7A101140 | 1 | BOLT, HEX HEAD 5/8 |
| 9 | 361129 | 2 | BUSHING |
| 10 | 00001300 | 6 | LOCKWASHER, 1/2 |
| 11 | 00001200 | 6 | NUT, HEX 1/2 |
| 12 | 00695100 | 1 | NUT, TOPLOCK 5/8 NC PLC |
| 13 | 15B800 | 4 | WASHER, 1/2 |
| 14 | 651062F | 1 | GREASE FITTING (DRIVE IN TYPE) |

CHAIN GUARD ASY - FRONT A60



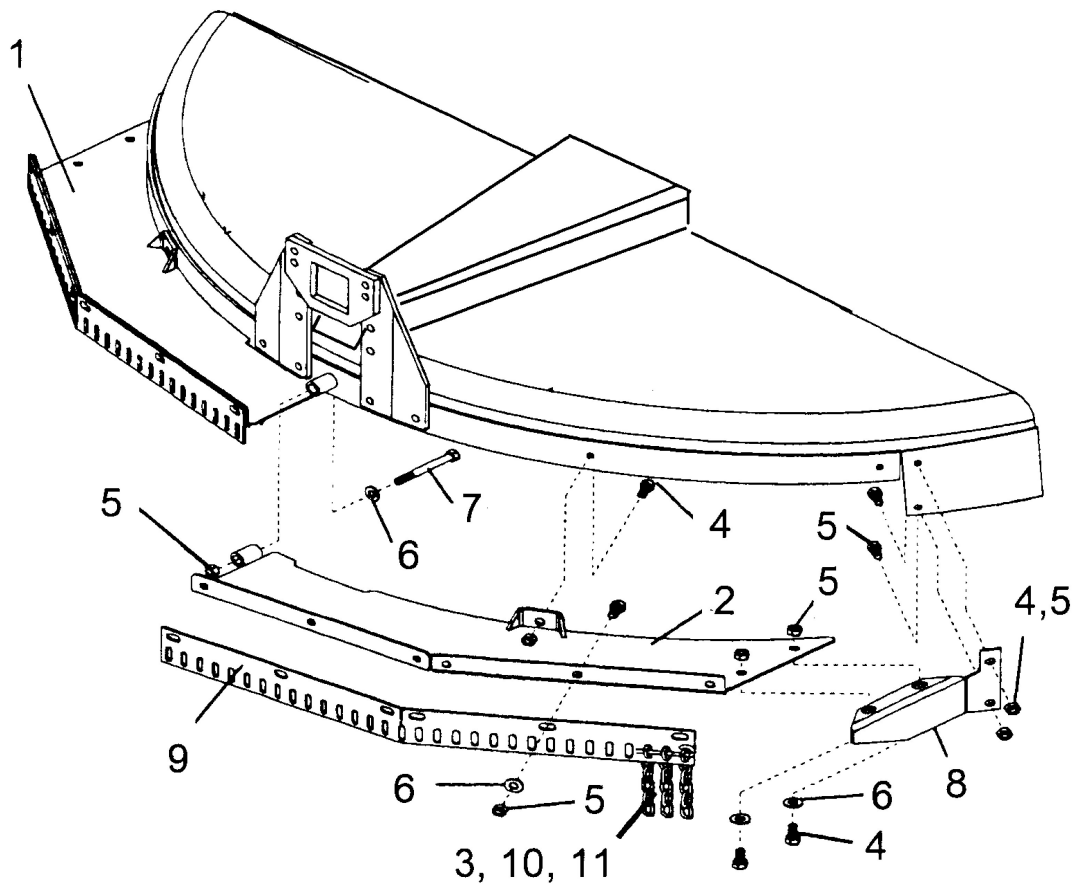
| ITEM | PART NO. | QTY. | DESCRIPTION |
|------|----------|------|---------------------------------------|
| | 00775706 | 1 | CHAIN GUARD ASY, FRONT SNGL COMP A-60 |
| 1 | 00775709 | 1 | FRONT RH ASY, A-60 |
| | 00775708 | 1 | FRONT LH ASY, A-60 |
| 2 | 7A101128 | 2 | BOLT, HEX HEAD 5/8 |
| 3 | 00001400 | 2 | FLATWASHER, 5/8 |
| 4 | 00695100 | 2 | NUT, TOPLOCK 5/8 NC PLC |
| 5 | 00775739 | 2 | DEFLECTOR, SIDE FORMED |
| 6 | 02030700 | 2 | BOLT, HEX HEAD 1/2 |
| 7 | 00001800 | 2 | LOCKNUT TLM 1/2 NC PLC |

CHAIN GUARD ASY - FRONT A72



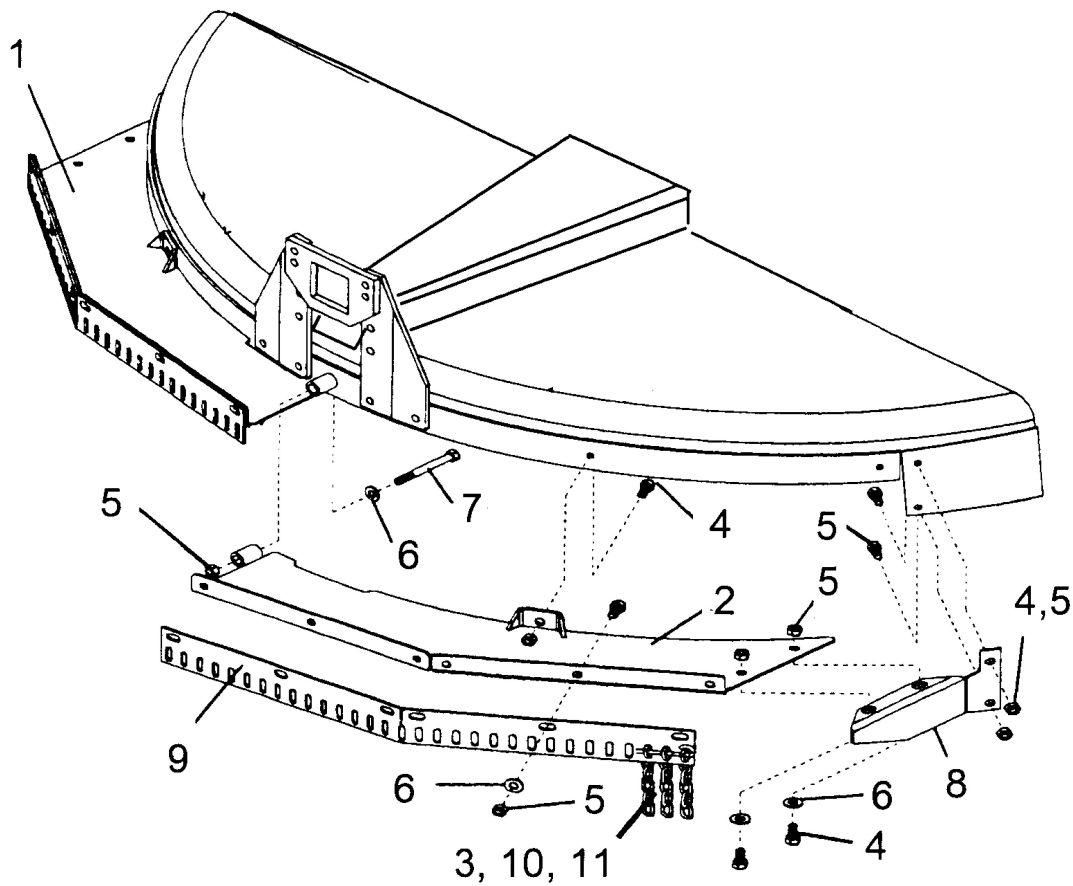
| ITEM | PART NO. | QTY. | DESCRIPTION |
|------|----------|------|-------------------------|
| 1 | 00775711 | 1 | FRONT RH ASY, A-72 |
| | 00775710 | 1 | FRONT LH ASY, A-72 |
| 2 | 7A101128 | 2 | BOLT, HEX HEAD 5/8 |
| 3 | 00001400 | 2 | FLATWASHER, 5/8 |
| 4 | 00695100 | 2 | NUT, TOPLOCK 5/8 NC PLC |
| 5 | 00775739 | 2 | DEFLECTOR, SIDE FORMED |
| 6 | 02030700 | 2 | BOLT, HEX HEAD 1/2 |
| 7 | 00001800 | 2 | LOCKNUT TLM 1/2 NC PLC |

CHAIN GUARD ASY - REAR A60



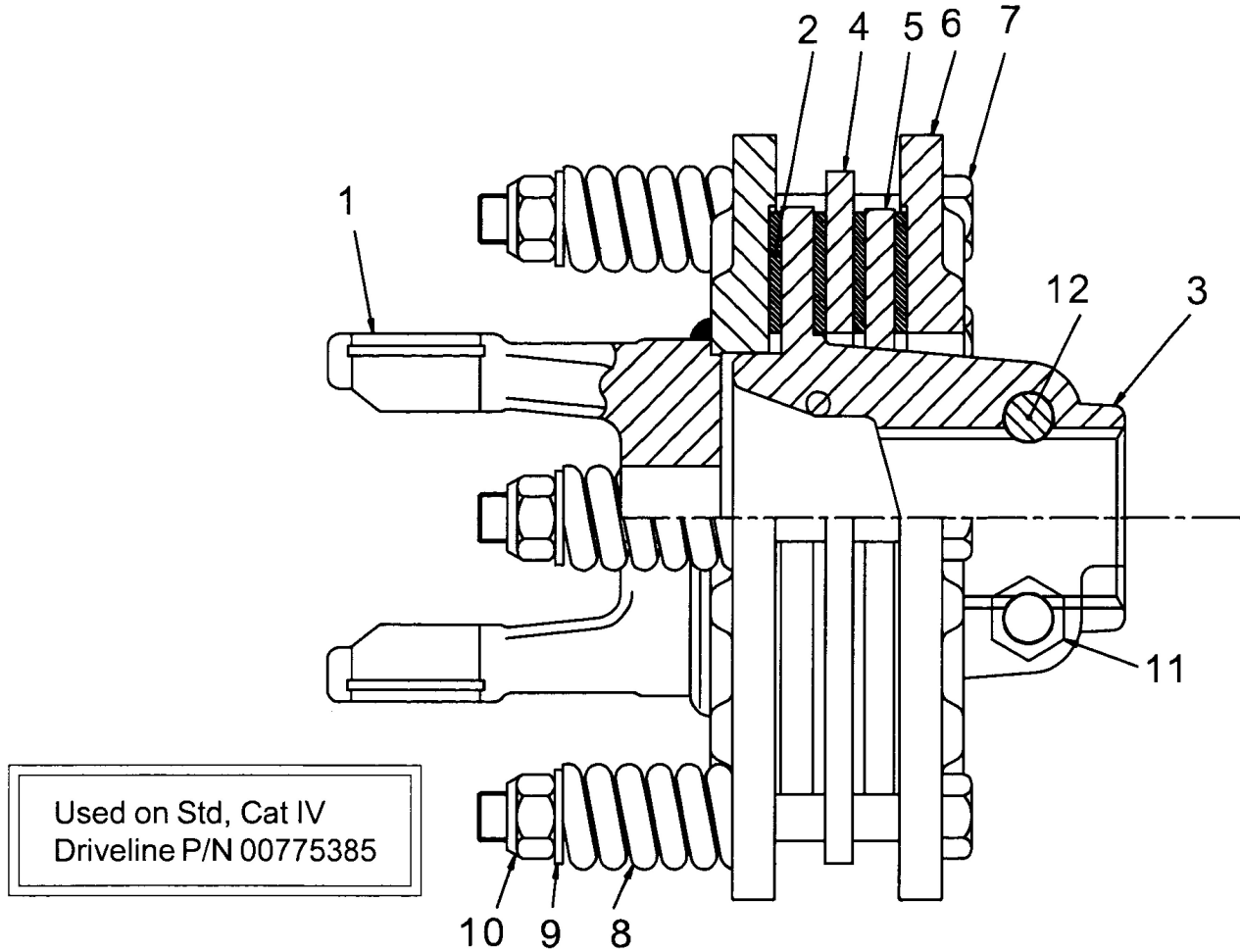
| ITEM | PART NO. | QTY. | DESCRIPTION |
|------|----------|------|---|
| | 00775664 | 1 | CHAIN GUARD ASY, REAR SNGL A-60 |
| 1 | 00773667 | 1 | DEFLECTOR WLDMNT, LH REAR A-60 |
| 2 | 00773663 | 1 | DEFLECTOR WLDMNT, RH REAR A-60 |
| 3 | 00775666 | 2 | CHANI GUARD ASY HALF, REAR LH OR RH A-60 |
| 4 | 02030700 | 18 | BOLT, HEX HEAD 1/2 |
| 5 | 00001800 | 19 | LOCKNUT TLM 1/2 NC PLC |
| 6 | 00002700 | 13 | FLATWASHER, 1/2 |
| 7 | 00752680 | 1 | BOLT, HEX HEAD 1/2 |
| 8 | 00775655 | 1 | PLATE, RH REAR C/G MNT |
| | 00775656 | 1 | PLATE, LH REAR C/G MNT |
| 9 | 00775501 | 2 | BRACKET (FLAT), REAR C/G A-60 |
| 10 | 00751126 | 24 | CHAIN, 5/16 |
| 11 | 00771618 | 2 | ROD, CHAIN GUARD (CUSTOMER CUT TO LENGTH) |

CHAIN GUARD ASY - REAR A72



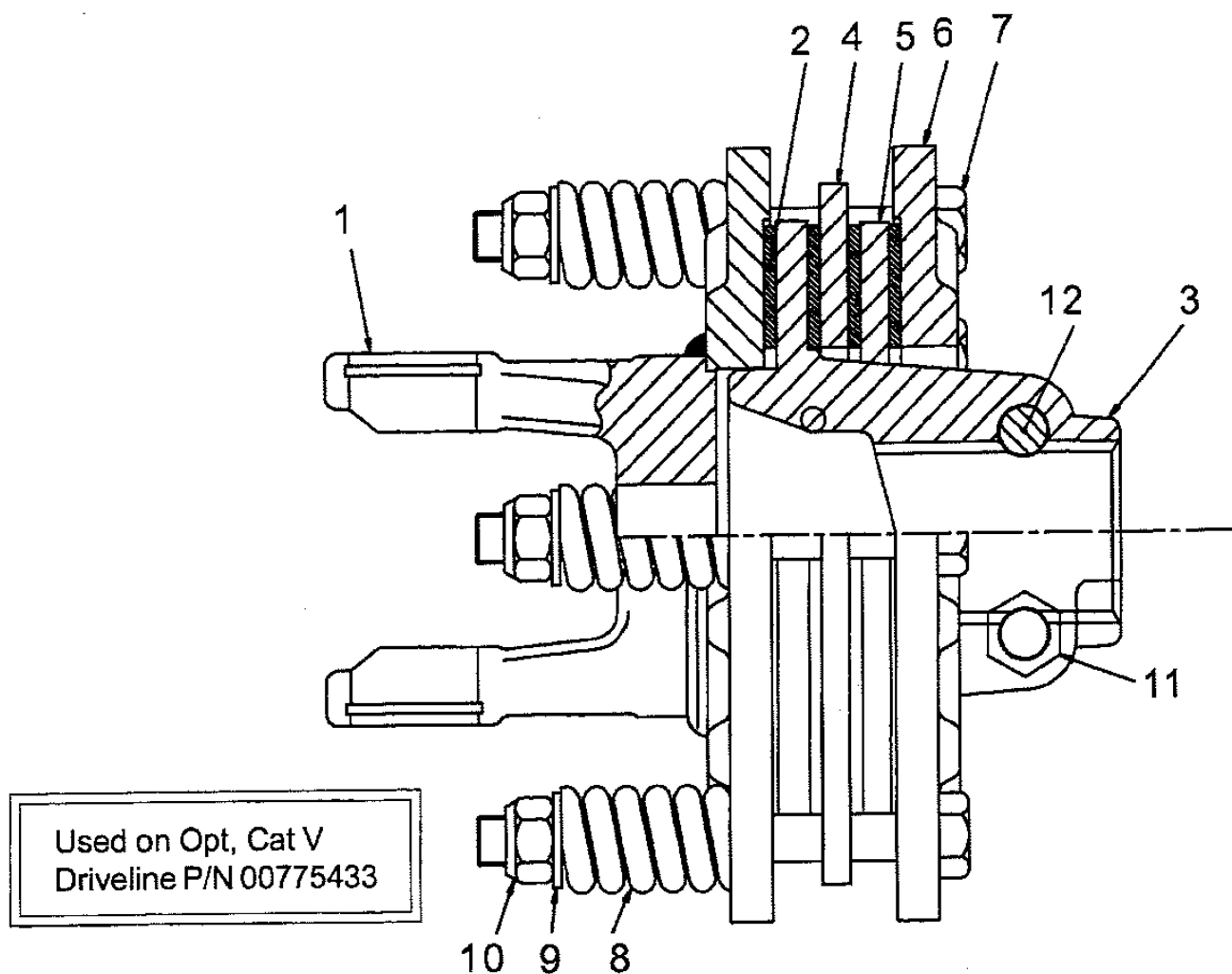
| ITEM | PART NO. | QTY. | DESCRIPTION |
|------|----------|------|---|
| 1 | 00775684 | 1 | CHAIN GUARD ASY, REAR SNGL A-72 |
| 2 | 00775503 | 1 | DEFLECTOR WLDMNT, LH REAR A-72 |
| | 00775502 | 1 | DEFLECTOR WLDMNT, RH REAR A-72 |
| 3 | 00775676 | 2 | CHAINING ASY HALF, REAR LH OR RH A-72 |
| 4 | 02030700 | 22 | BOLT, HEX HEAD 1/2 |
| 5 | 00001800 | 23 | LOCKNUT TLM 1/2 NC PLC |
| 6 | 00002700 | 17 | FLATWASHER, 1/2 |
| 7 | 00752680 | 1 | BOLT, HEX HEAD 1/2 |
| 8 | 00775655 | 1 | PLATE, RH REAR C/G MNT |
| | 00775656 | 1 | PLATE, LH REAR C/G MNT |
| 9 | 00775290 | 2 | BRACKET (FLAT), REAR C/G A-72 |
| 10 | 00751126 | 31 | CHAIN, 5/16 |
| 11 | 00771618 | 2 | ROD, CHAIN GUARD (CUSTOMER CUT TO LENGTH) |

CLUTCH ASY - PN 00775331 CAT IV (STANDARD)



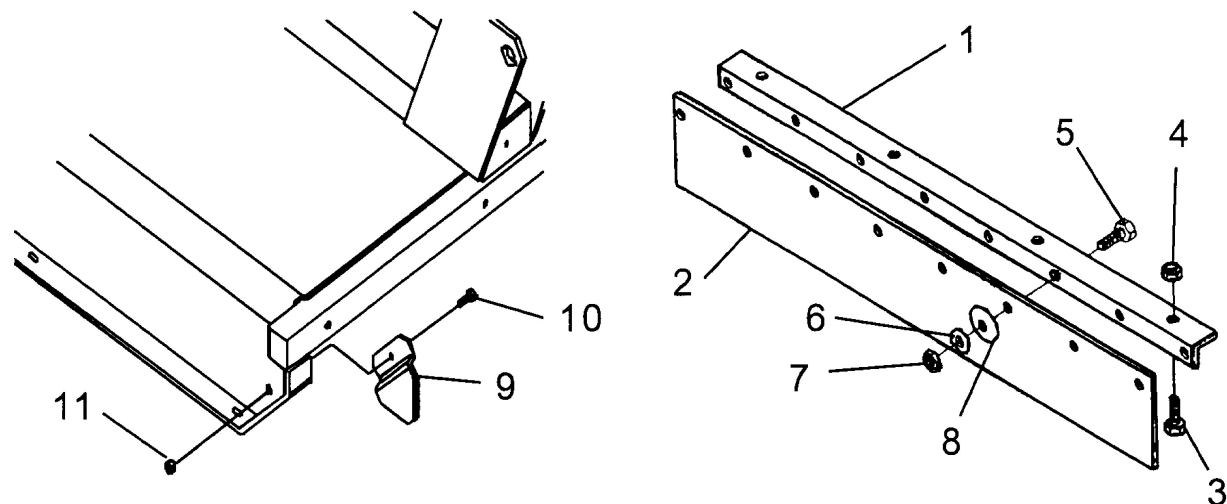
| ITEM | PART NO. | QTY. | DESCRIPTION |
|------|----------|------|--|
| | 00775331 | 1 | CLUTCH ASY, STD CAT IV / 35R |
| 1 | 00775333 | 1 | FLANGE YOKE |
| 2 | 8366 | 4 | RING, CLUTCH LINING |
| 3 | 00775334 | 1 | HUB 1-3/4 |
| 4 | 00775335 | 1 | DRIVE PLATE |
| 5 | 00775336 | 1 | DRIVE PLATE, W HOLES |
| 6 | 00775337 | 1 | THRUST PLATE. W/O HOLES |
| 7 | 00775338 | 6 | BOLT, HEX HEAD M12-P1.25 X 115MM |
| 8 | 00775339 | 6 | COMPRESSION SPRING |
| 9 | 00754566 | 6 | LOCKWASHER, 12MM |
| 10 | 00756164 | 6 | LOCKNUT, TOPLOCK HEX 12MM-P1.75 GR.8.8 |
| 11 | 00775327 | 2 | LOCKNUT, TOPLOCK M12-P1.75 |
| 12 | 00775328 | 2 | BOLT, HEX HEAD M12-P1.75 X 65MM |

CLUTCH ASY - PN 00775382 CAT V (OPTION)



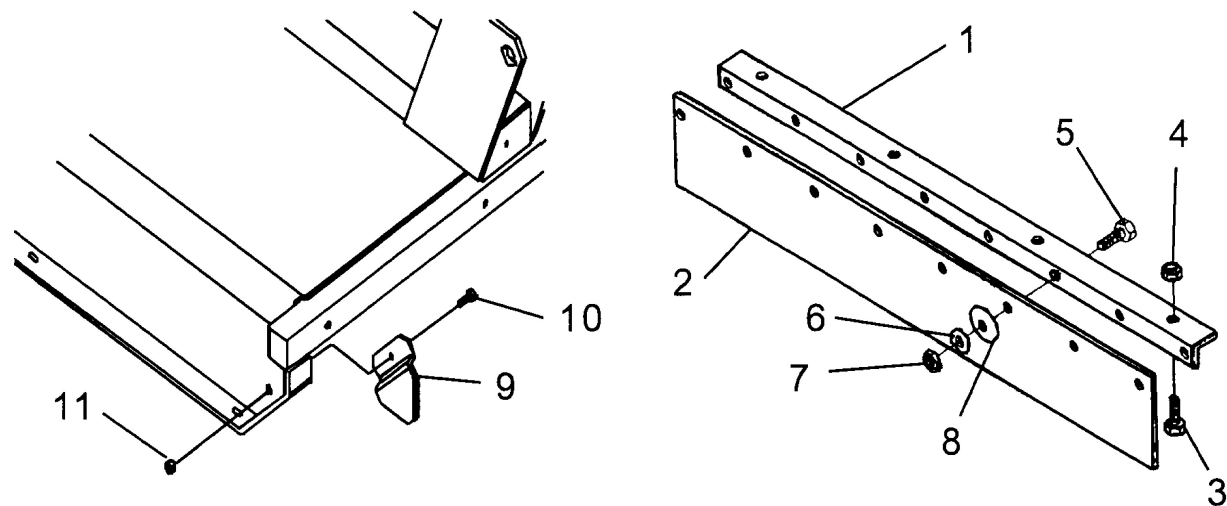
| ITEM | PART NO. | QTY. | DESCRIPTION |
|------|----------|------|------------------------------------|
| | 00775382 | 1 | CLUTCH ASY, CAT V / 44R |
| 1 | 00775383 | 1 | YOKE FLANGE |
| 2 | 8366 | 4 | FRICTION LINING |
| 3 | 00775334 | 1 | HUB, 1-3/4 |
| 4 | 00775335 | 1 | DRIVE PLATE |
| 5 | 00775336 | 1 | DRIVE PLATE, W/ HOLES |
| 6 | 00775337 | 1 | THRUST PLATE, W/O HOLES |
| 7 | 00775338 | 6 | BOLT, HEX HEAD M12-P1.25 X 115MM |
| 8 | 00775339 | 6 | COMPRESSION SPRING |
| 9 | 00754566 | 6 | LOCKWASHER, 12MM |
| 10 | 00756164 | 6 | LOCKNUT, TOPLOCK 12MM-P1.75 GR.8.8 |
| 11 | 00775327 | 2 | LOCKNUT, TOPLOCK M12-P1.75 |
| 12 | 00775328 | 2 | BOLT, HEX HEAD M12-P1.75 X 65MM |

DEFLECTOR ASY - FRONT A60



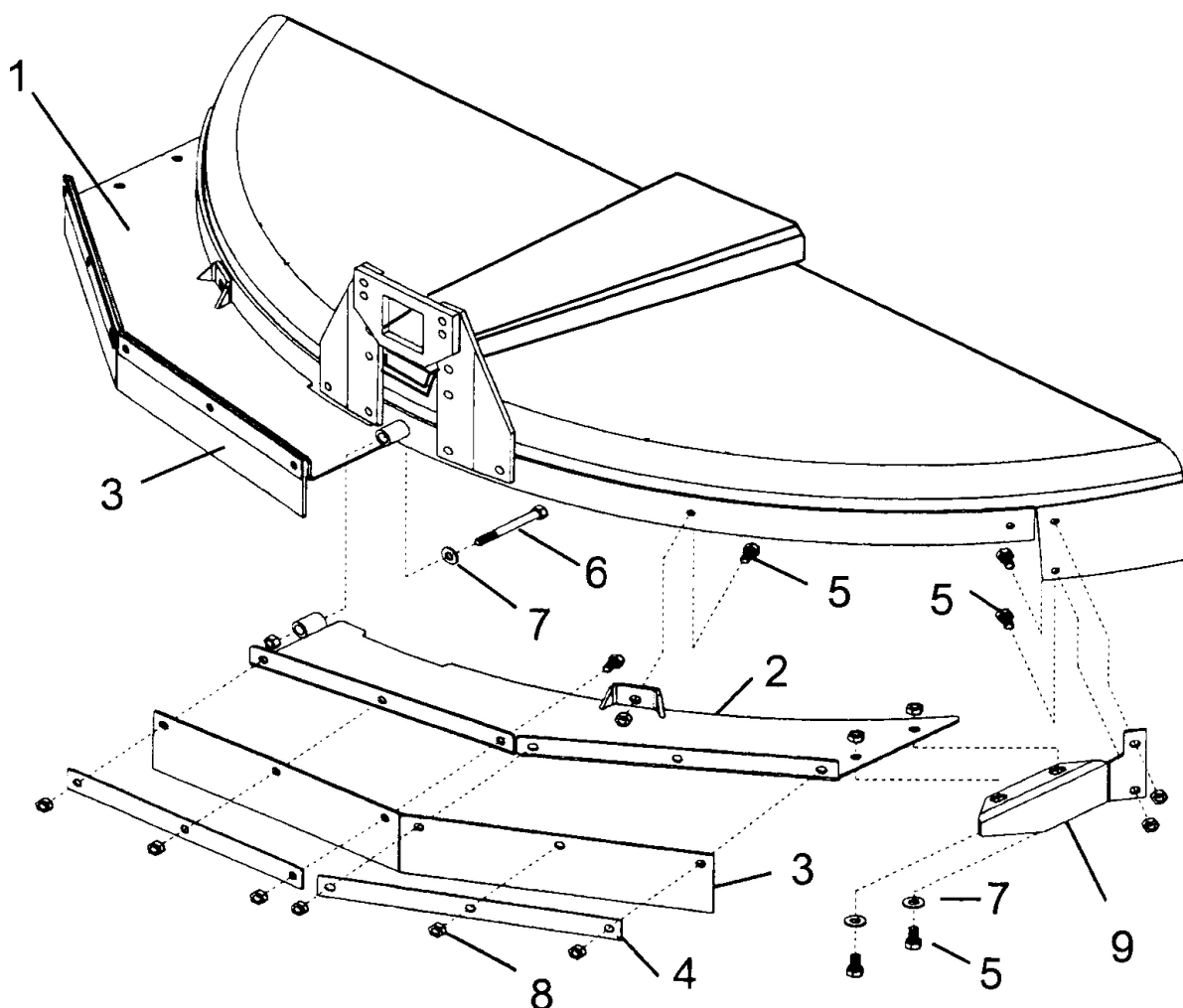
| ITEM | PART NO. | QTY. | DESCRIPTION |
|------|----------|------|--------------------------------|
| | 00775703 | 1 | ASY,DEFL FRT COMPL CY60 |
| | 00775702 | - | ASY,DEFL FRT COMPT CY72 |
| 1 | 00758240 | 1 | BRACKET,MOUNT,FRONT DEFLECTOR |
| | 00758244 | - | BRACKET, DEFLECTOR MOUNT FRONT |
| 2 | 00775704 | 1 | PANEL, RUBBER FRONT DEFLECTOR |
| | 00775697 | - | PANEL, RUBBER FRONT DEFLECTOR |
| 3 | 10318000 | 4 | HEXB 1/2NCX3 PL8 |
| 5 | 63066100 | 8 | HHCS 3/8NCX1-1/2 |
| 6 | 00011100 | 8 | FLATWASHER STD 3/8 |
| 7 | 00015800 | 8 | LOCKNUT TLM 3/8-NC PLC |
| 8 | 02035800 | 8 | WASHER, WOOD, PLATED |
| 9 | 00775739 | 2 | DEFLECT SIDE FORMED |
| 10 | 02030700 | 2 | HHCS 1/2-13UNC 1-1/4 PL5 |
| 11 | 00001800 | 2 | LOCKNUT TLM 1/2 NC PLC |

DEFLECTOR ASY - FRONT A72



| ITEM | PART NO. | QTY. | DESCRIPTION |
|------|----------|------|--------------------------------|
| | 00775702 | 1 | ASY, DEFL FRT COMPT CY72 |
| 1 | 00758244 | 1 | BRACKET, DEFLECTOR MOUNT FRONT |
| 2 | 00775697 | 1 | PANEL, RUBBER FRONT DEFLECTOR |
| 3 | 10318000 | 4 | HEXB 1/2 NC X 3 PL8 |
| 5 | 63066100 | 9 | HHCS 3/8 NC X 1-1/2 |
| 6 | 00011100 | 9 | FLATWASHER STD 3/8 |
| 7 | 00015800 | 9 | LOCKNUT TLM 3/8-NC PLC |
| 8 | 02035800 | 9 | WASHER, WOOD, PLATED |
| 9 | 00775739 | 2 | DEFLECT SIDE FORMED |
| 10 | 02030700 | 2 | HHCS 1/2-13 UNC 1-1/4 PL5 |
| 11 | 00001800 | 2 | LOCKNUT TLM 1/2 NC PLC |

DEFLECTOR ASY - REAR A60



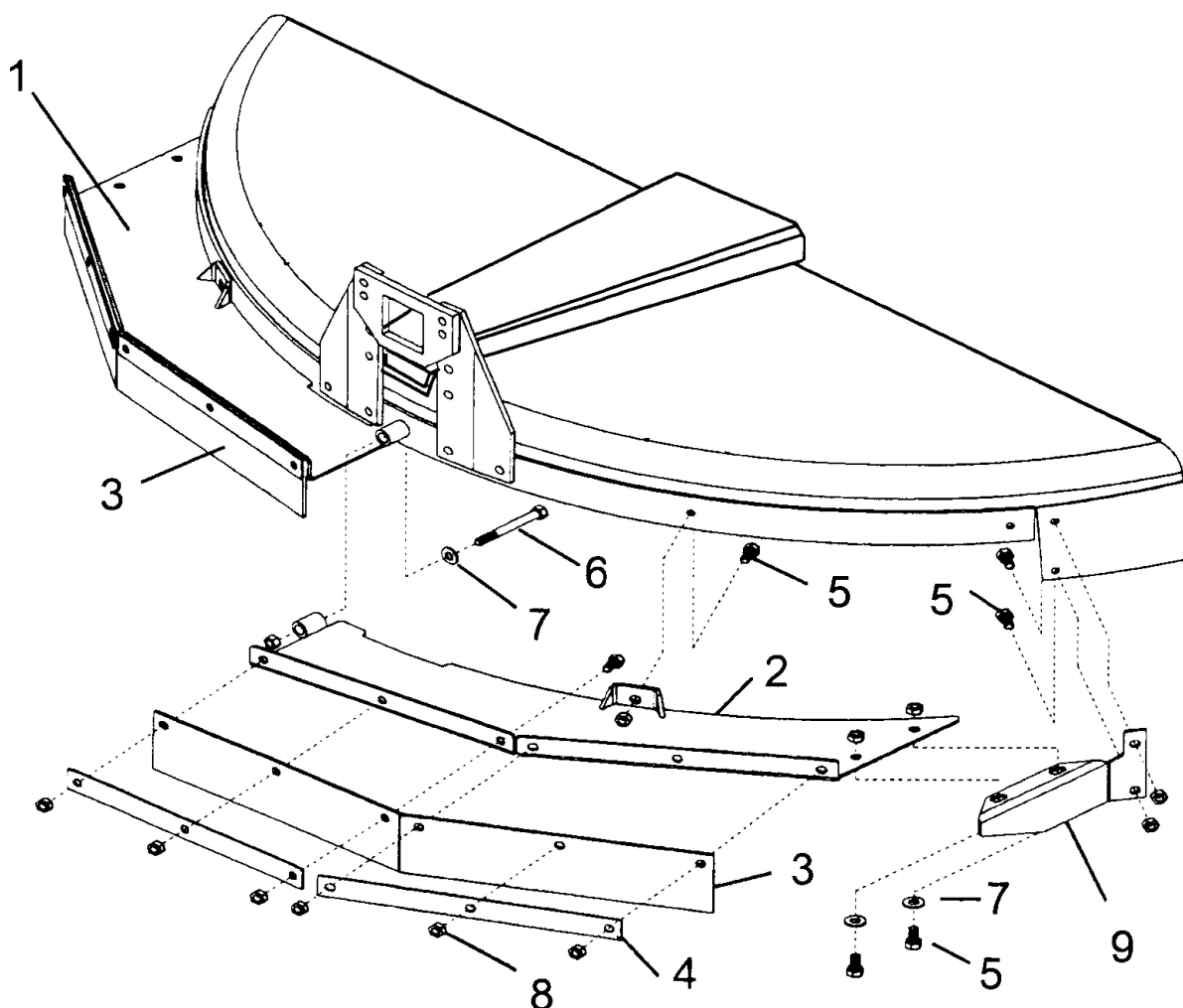
| ITEM | PART NO. | QTY. | DESCRIPTION |
|------|----------|------|--------------------------------|
| | 00775703 | 1 | ASY,DEFL FRT COMPL CY60 |
| | 00775702 | - | ASY,DEFL FRT COMPT CY72 |
| 1 | 00758240 | 1 | BRACKET,MOUNT,FRONT DEFLECTOR |
| | 00758244 | - | BRACKET, DEFLECTOR MOUNT FRONT |
| 2 | 00775704 | 1 | PANEL, RUBBER FRONT DEFLECTOR |
| | 00775697 | - | PANEL, RUBBER FRONT DEFLECTOR |
| 3 | 10318000 | 4 | HEXB 1/2NCX3 PL8 |
| 5 | 63066100 | 8 | HHCS 3/8NCX1-1/2 |
| 6 | 00011100 | 8 | FLATWASHER STD 3/8 |
| 7 | 00015800 | 8 | LOCKNUT TLM 3/8-NC PLC |

DEFLECTOR ASY - REAR A60

Continued...

| ITEM | PART NO. | QTY. | DESCRIPTION |
|------|----------|------|--------------------------|
| 8 | 02035800 | 8 | WASHER, WOOD, PLATED |
| 9 | 00775739 | 2 | DEFLECT SIDE FORMED |
| 10 | 02030700 | 2 | HHCS 1/2-13UNC 1-1/4 PL5 |
| 11 | 00001800 | 2 | LOCKNUT TLM 1/2 NC PLC |

DEFLECTOR ASY - REAR A72



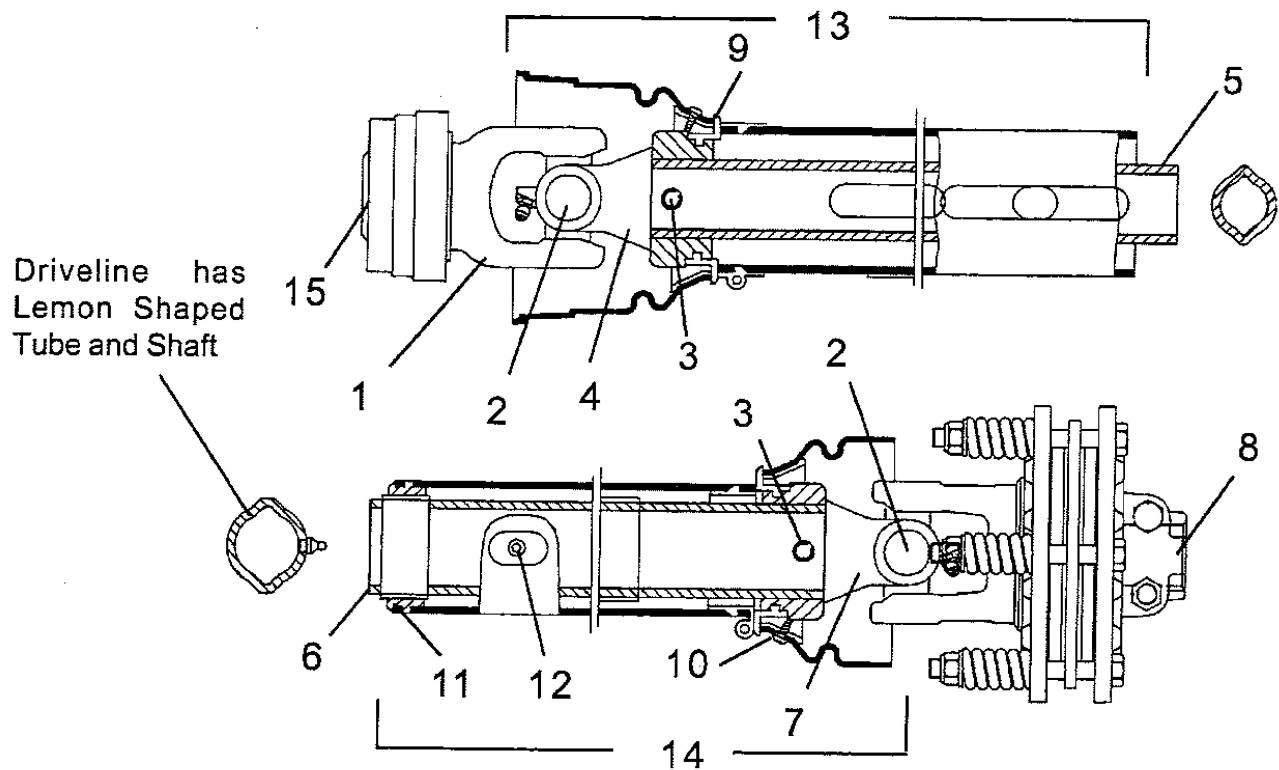
| ITEM | PART NO. | QTY. | DESCRIPTION |
|------|----------|------|--------------------------------|
| | 00775703 | 1 | ASY,DEFL FRT COMPL CY60 |
| | 00775702 | - | ASY,DEFL FRT COMPT CY72 |
| 1 | 00758240 | 1 | BRACKET,MOUNT,FRONT DEFLECTOR |
| | 00758244 | - | BRACKET, DEFLECTOR MOUNT FRONT |
| 2 | 00775704 | 1 | PANEL, RUBBER FRONT DEFLECTOR |
| | 00775697 | - | PANEL, RUBBER FRONT DEFLECTOR |
| 3 | 10318000 | 4 | HEXB 1/2NCX3 PL8 |
| 5 | 63066100 | 8 | HHCS 3/8NCX1-1/2 |
| 6 | 00011100 | 8 | FLATWASHER STD 3/8 |
| 7 | 00015800 | 8 | LOCKNUT TLM 3/8-NC PLC |

DEFLECTOR ASY - REAR A72

Continued...

| ITEM | PART NO. | QTY. | DESCRIPTION |
|------|----------|------|--------------------------|
| 8 | 02035800 | 8 | WASHER, WOOD, PLATED |
| 9 | 00775739 | 2 | DEFLECT SIDE FORMED |
| 10 | 02030700 | 2 | HHCS 1/2-13UNC 1-1/4 PL5 |
| 11 | 00001800 | 2 | LOCKNUT TLM 1/2 NC PLC |

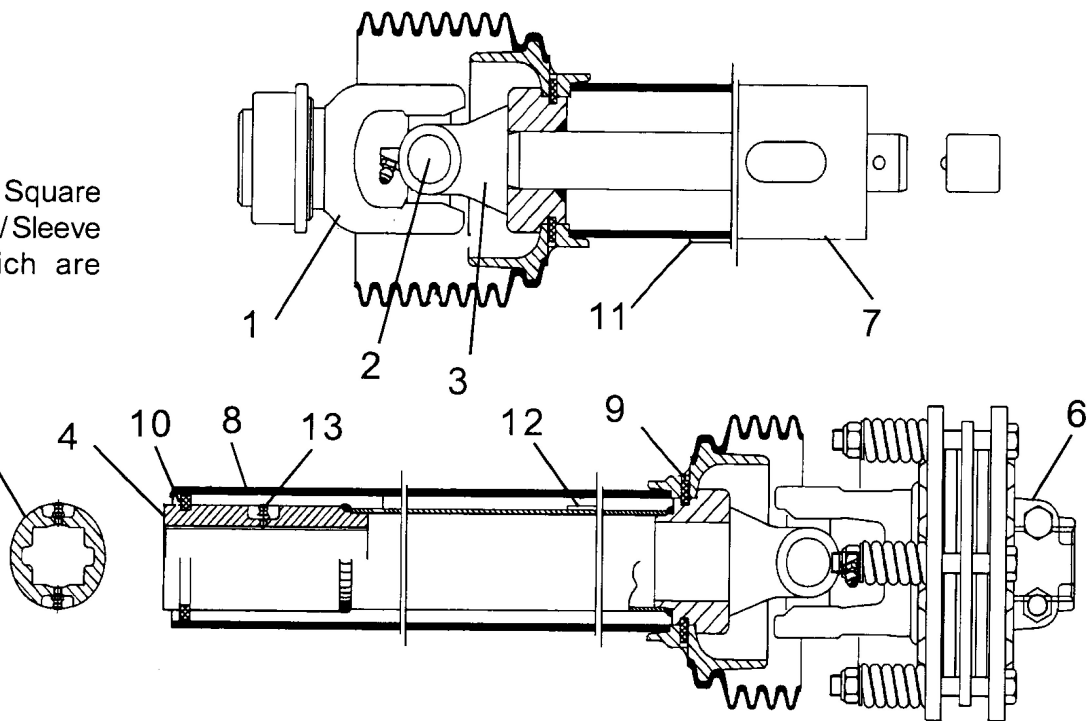
DRIVELINE ASY - PN 00775385 CAT IV / 35R (STANDARD)



| ITEM | PART NO. | QTY. | DESCRIPTION |
|------|----------|------|--|
| | 00775385 | 1 | DRIVELINE ASY, W/SHIELDS |
| 1 | 00775353 | 1 | YOKE, 1-3/8 |
| 2 | W279R | 2 | UNIVERSAL JOINT (X-KIT) |
| 3 | 8384 | 2 | SPRING PIN, 10MM X 90MM |
| 4 | 00775317 | 1 | YOKE, F/INNER TUBE |
| 5 | 7413 | 1 | INNER PROFILE |
| 6 | 00775377 | 1 | PROFILE & SLEEVE WLDMNT |
| 7 | 00775318 | 1 | YOKE, F/OUTER TUBE |
| 8 | 00775331 | 1 | CLUTCH ASY |
| 9 | 8393 | 2 | BEARING RING, F/ INNER OR OUTER SHIELD |
| 10 | 00759217 | 2 | SCREW, 1/2 |
| 11 | 8974 | 1 | SUPPORT BEARING, F/ INNER SHIELD |
| 12 | 1416601 | 1 | GREASE FITTING |
| 13 | 00775388 | 1 | OUTER SHIELD HALF, COMPLETE |
| 14 | 00775389 | 1 | INNER SHIELD HALF, COMPLETE |
| 15 | 00767954 | 1 | YOKE,Q.D.SLIDE COLLAR KIT - PLASTIC |

DRIVELINE ASY - PN 00775433 CAT V / 44R (OPTION)

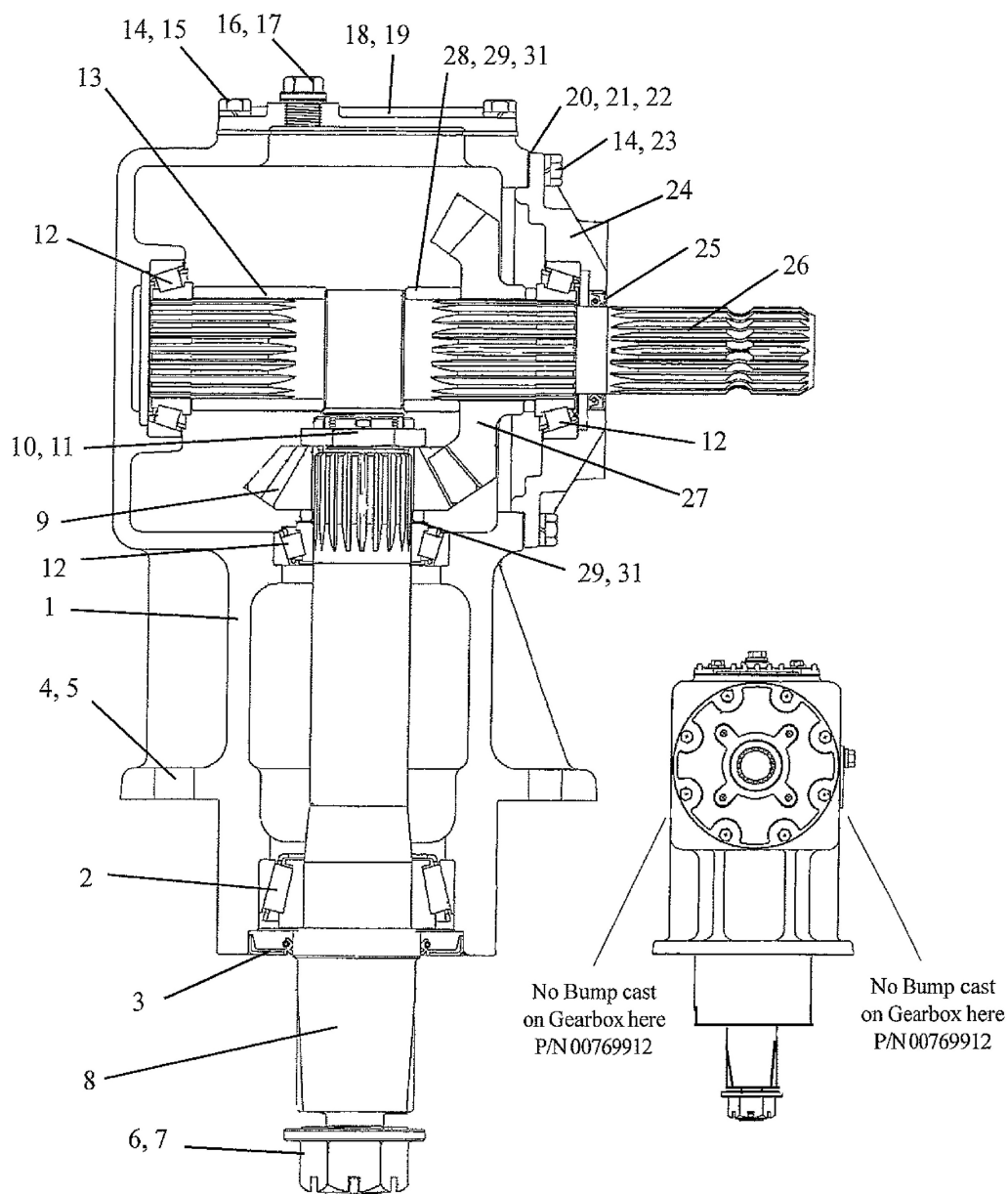
Driveline has Square Shaped Tube / Sleeve & Shaft which are weldments.



| ITEM | PART NO. | QTY. | DESCRIPTION |
|------|----------|------|------------------------------|
| | 00775433 | 1 | DRIVELINE, 540 AG60/72 |
| 1 | W821A | 1 | YOKE,Q.D. 6BSPLN PAINT BLACK |
| 2 | W840 | 2 | UNIVERSAL JOINT (X-KIT) |
| 3 | 00775446 | 1 | YOKE & SHAFT WLDMNT |
| 4 | 00775447 | 1 | YOKE, TUBE & SLEEVE WLDMNT |
| 6 | 00775382 | 1 | CLUTCH ASY |
| 7 | 00775448 | 1 | OUTER SHIELD TUBE ASY |
| 8 | 00775449 | 1 | INNER SHIELD TUBE ASY |
| 9 | 00775347 | 4 | SHIELD BEARING |
| 10 | 00775348 | 1 | SUPPORT BEARING |
| 11 | 7387 | 1 | DECAL, DECK U-JOINT |
| 12 | 00756004 | 1 | DECAL-SHIELD MISSING |
| 13 | 00752670 | 2 | GREASE FITTING, 1/4 |

GEARBOX ASY - PN 00769912 (OLD STYLE)

00769912 Gearbox



NOTE:

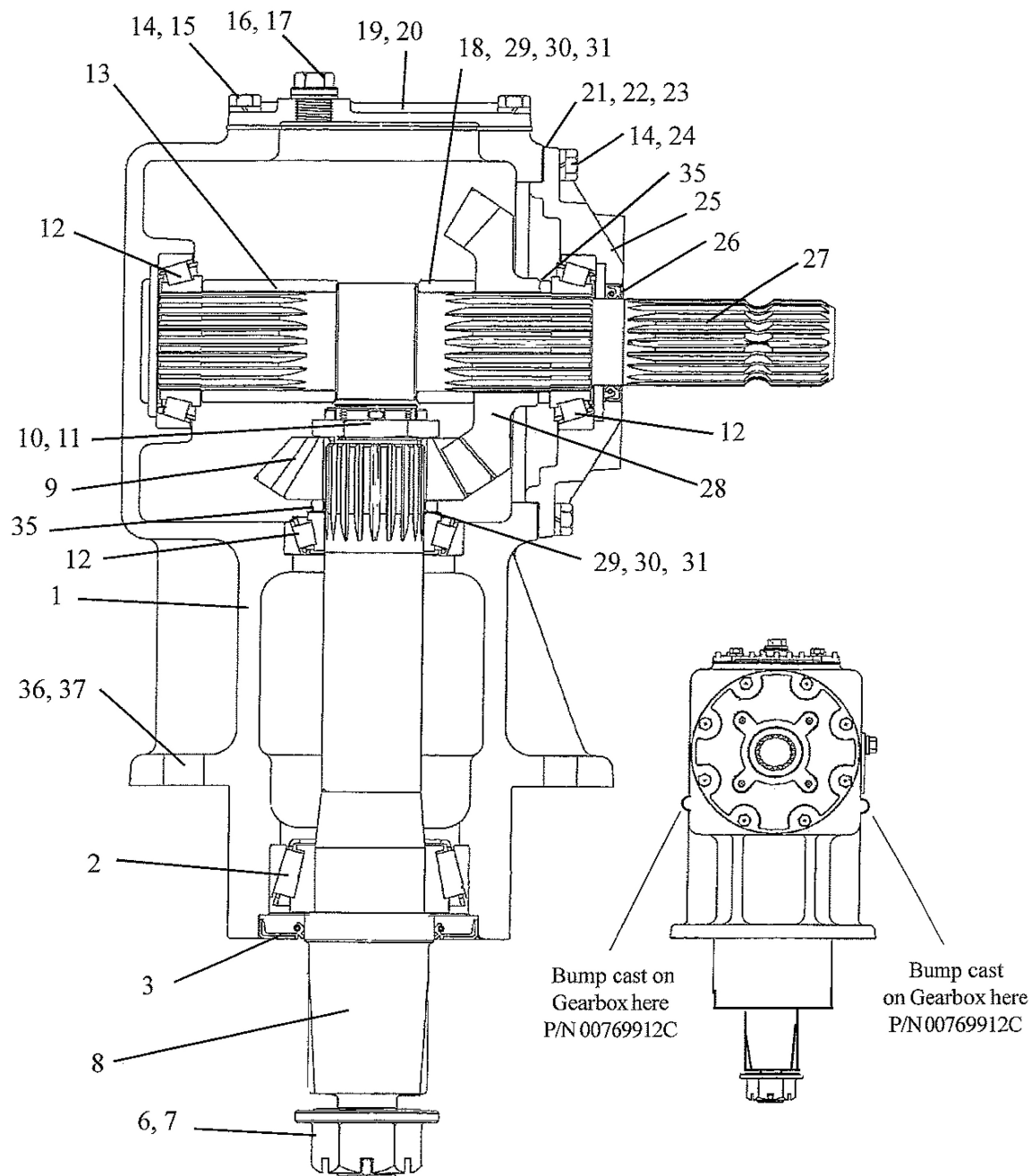
Approx 11/06 the gearbox was changed to P/N 00769912C which has a larger OD lower Bearing Cup (item 2). Both gearboxes were used in production until stock of P/N 00769912 was depleted. Due to both being used at the same time, you could have either gearbox. To ID the later gearbox (P/N 00769912C) there are two bumps cast on the outside of the gearbox housing, the earlier gearbox (P/N 00759912) will not have these bumps. Lower Bearing Cup OD for Gearbox P/N 00769912 is smaller at 3.54" and Bearing Cup OD for Gearbox P/N 00769912C is larger at 3.93", check the bearing cup OD before ordering replacement parts.

GEARBOX ASY - PN 00769912 (OLD STYLE)

Continued...

| ITEM | PART NO. | QTY. | DESCRIPTION |
|------|----------|------|--|
| | 00769912 | 1 | GEARBOX ASY - W/GREASE |
| 1 | 00770724 | 1 | GEARBOX HOUSING (W/O CAST BUMPS ON IT) |
| 2 | 00770725 | 1 | BEARING ASY, CUP & CONE (3.54 |
| 3 | 00770726 | 1 | OIL SEAL |
| 4 | 00749127 | 6 | BOLT, HEX HEAD 5/8 |
| 5 | 00749136 | 6 | LOCKNUT, TOPLOCK 5/8 |
| 6 | 00771226 | 1 | NUT, FLANGED SLOTTED M30-P2.0 |
| 7 | 01422502 | 1 | COTTER PIN, 3/16 |
| 8 | 00770728 | 1 | VERTICAL OUTPUT SHAFT |
| 9 | 00770729 | 1 | GEAR, 19 TOOTH |
| 10 | 00770730 | 1 | BEARING ADJUSTING NUT |
| 11 | 00606000 | 1 | COTTER PIN, 3/16 |
| 12 | 00769938 | 3 | BEARING ASY, CUP & CONE |
| 13 | 00770731 | 1 | INPUT SHAFT SPACER |
| 14 | 00766083 | 12 | WASHER |
| 15 | 00754338 | 4 | BOLT, HEX HEAD M10-P1.5 X 20MM |
| 16 | 00762517 | 2 | PLUG, SOCKET HEAD 18M-P1.5 |
| 17 | 00769321 | 3 | WASHER, SEALING 17.8M |
| 18 | 00770732 | 1 | INSPECTION COVER |
| 19 | 00770733 | 1 | INSPECTION COVER GASKET |
| 20 | 00758646 | 1 | SHIM, ADJUSTMENT - .004 |
| 21 | 00758647 | 1 | SHIM, ADJUSTMENT - .010 |
| 22 | 00758648 | 1 | SHIM ,ADJUSTMENT - .020 |
| 23 | 00765905 | 8 | BOLT, HEX HEAD M10-P1.5 X 30MM |
| 24 | 00770734 | 1 | INPUT CAP |
| 25 | 00758653 | 1 | SEAL |
| 26 | 00770735 | 1 | INPUT SHAFT |
| 27 | 00770736 | 1 | GEAR, 13 TOOTH |
| 28 | 00758657 | 1 | SPACER, INPUT SHAFT |
| 29 | 00758667 | 1 | SHIM, 0.30 |
| 31 | 00758668 | 1 | SHIM, 0.50 |

GEARBOX ASY - PN 00769912C (NEW STYLE)



NOTE:

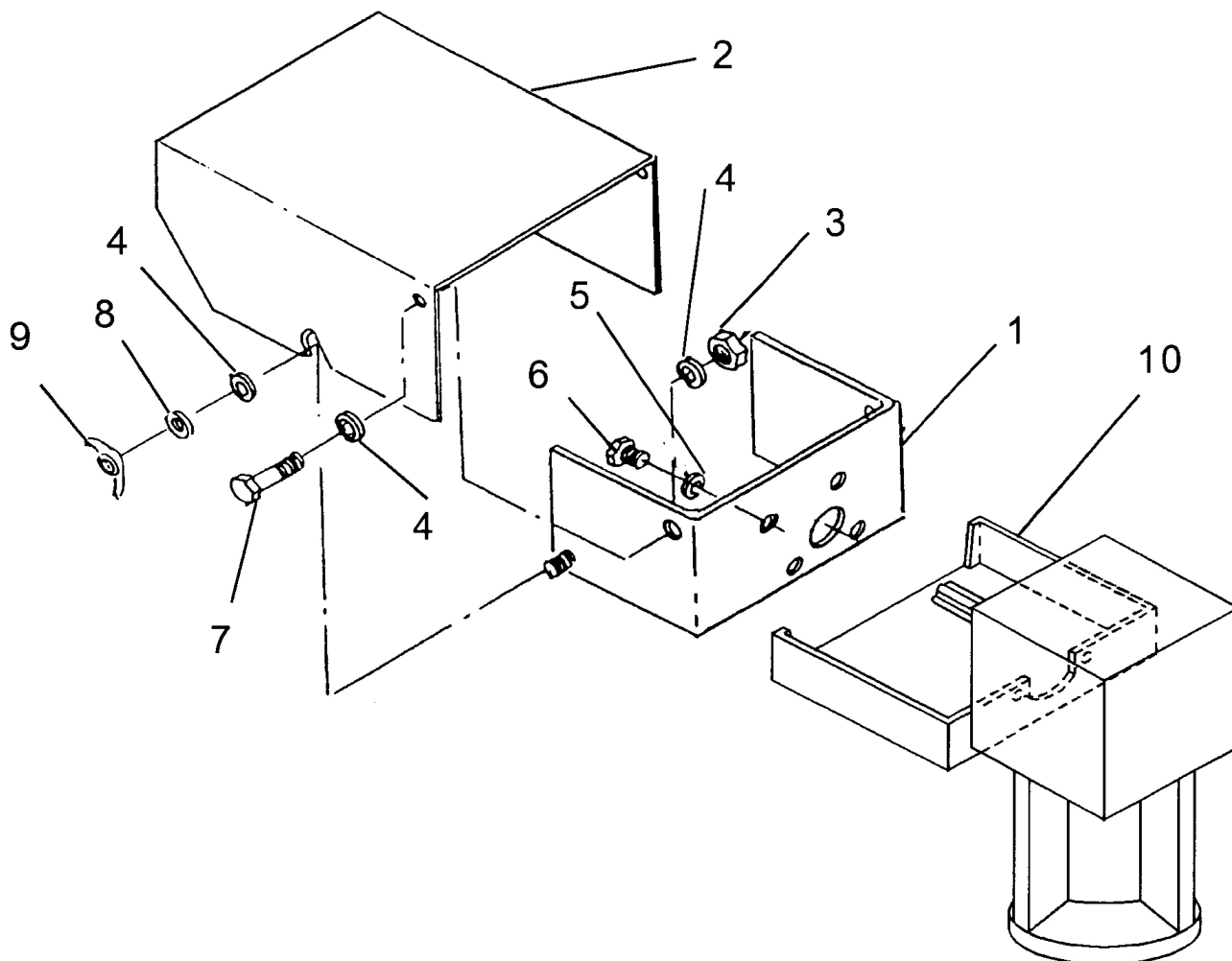
Approx 11/06 the gearbox was changed to P/N 00769912C which has a larger OD lower Bearing Cup (item 2). Both gearboxes were used in production until stock of P/N 00769912 was depleted. Due to both being used at the same time, you could have either gearbox. To ID the later gearbox (P/N 00769912C) there are two bumps cast on the outside of the gearbox housing, the earlier gearbox (P/N 00759912) will not have these bumps. Lower Bearing Cup OD for Gearbox P/N 00769912 is smaller at 3.54" and Bearing Cup OD for Gearbox P/N 00769912C is larger at 3.93", check the bearing cup OD before ordering replacement parts.

GEARBOX ASY - PN 00769912C (NEW STYLE)

Continued...

| ITEM | PART NO. | QTY. | DESCRIPTION |
|------|-----------|------|--|
| | 00769912C | 1 | GEARBOX ASY W/GREASE |
| 1 | 00779330 | 1 | GEARBOX HOUSING W/ BUMPS CAST ON IT |
| 2 | 00779329 | 1 | BEARING ASY CUP & CONE (CUP OD 3.93) |
| 3 | 00770726 | 1 | OIL SEAL |
| 6 | 00771226 | 1 | NUT FLANGED SLOTTED M30-P2.00 |
| 7 | 01422502 | 1 | COTTER PIN 3/16 X 2-1/2 |
| 8 | 00770728 | 1 | VERTICAL OUTPUT SHAFT |
| 9 | 00758693 | 1 | GEAR 13 TOOTH |
| 10 | 00762121 | 1 | NUT HEX THIN SLOTTED |
| 11 | 00770421 | 1 | COTTER PIN 3.6MM X 65MM |
| 12 | 00769938 | 3 | BEARING CUP & CONE |
| 13 | 00770731 | 1 | INPUT SHAFT SPACER (LONG SPACER) |
| 14 | 00755954 | 12 | LOCKWASHER M10 |
| 15 | 00754338 | 4 | BOLT HEX HEAD M10-P1.5 X 20MM |
| 16 | 00762123 | 2 | PLUG OIL LEVEL M18 X 1.5 |
| 17 | 00769321 | 3 | WASHER SEALING 17.8M |
| 18 | 00758657 | 1 | SPACER INPUT SHAFT (SHORT SPACER) |
| 19 | 00770732 | 1 | INSPECTION COVER |
| 20 | 00770733 | 1 | INSPECTION COVER GASKET |
| 21 | 00758646 | 1 | SHIM ADJUSTMENT - .004 |
| 22 | 00758647 | 1 | SHIM ADJUSTMENT - .010 |
| 23 | 00758648 | 1 | SHIM ADJUSTMENT - .020 |
| 24 | 00765905 | 8 | HEXB METRIC 10-P1.5 - 30MM |
| 25 | 00770734 | 1 | INPUT CAP |
| 26 | 00758653 | 1 | SEAL 1-3/4ID X 2.378OD |
| 27 | 00770735 | 1 | INPUT SHAFT |
| 28 | 00758694 | 1 | GEAR 19 TOOTH |
| 29 | 00758667 | 1 | SHIM .012 2.44 O.D. |
| 30 | 00762153 | 1 | SHIM .016 |
| 31 | 00758668 | 1 | SHIM .020 2.44 O.D. |
| 32 | 00762114 | 1 | PLUG VENT W/WASHER 18M-P1.5 |
| 35 | 00774064 | 2 | GEAR SPACER |
| 36 | 00749127 | 6 | BOLT HEX HEAD 5/8-18NF X 2-1/2 PL GR5 (G/B MNTG NOT SHOWN) |
| 37 | 00749136 | 6 | LOCKNUT TOPLOCK 5/8-NF PLB (G/B MNTG NOT SHOWN) |

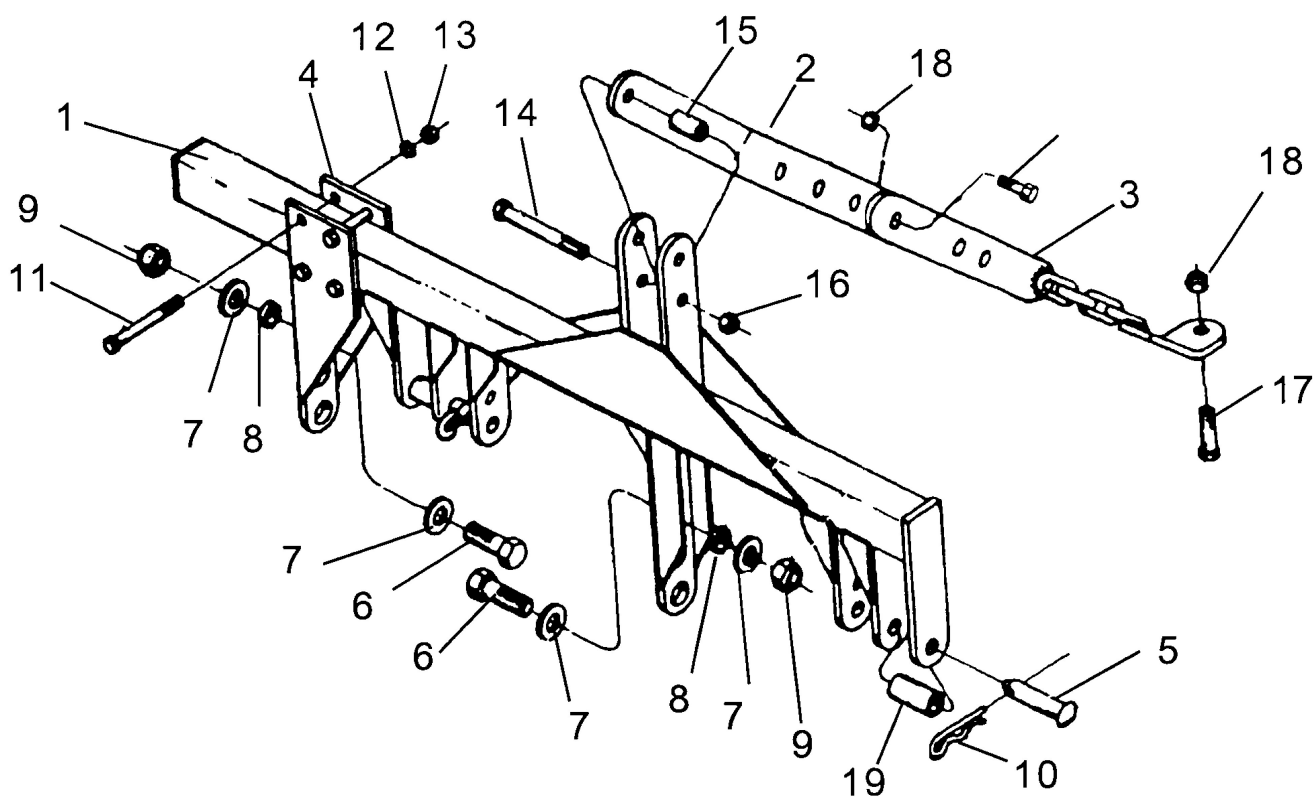
GEARBOX SHIELD ASY



| ITEM | PART NO. | QTY. | DESCRIPTION |
|------|----------|------|---------------------------------------|
| 1 | 00757742 | 1 | BRACKET, GEARBOX SHIELD |
| 2 | 00757573 | 1 | SHIELD, GEARBOX |
| 3 | 00015800 | 2 | LOCKNUT, TOPLOCK 3/8 |
| 4 | 00011100 | 4 | FLATWASHER, 3/8 |
| 5 | 00011700 | 4 | LOCKWASHER, 5/16 |
| 6 | 00751693 | 4 | BOLT, HEX HEAD M8-P1.25 X 16MM PL GR5 |
| 7 | 00753642 | 2 | BOLT, HEX HEAD 3/8 |
| 8 | 00024100 | 2 | FLATWASHER, 1/4 |
| 9 | 00004000 | 2 | WINGNUT, 1/4 |
| 10 | 00769842 | 1 | SHIELD, LOWER GEARBOX |

THIS PAGE INTENTIONALLY LEFT BLANK

OFFSET HITCH ADAPTER (OPTION)



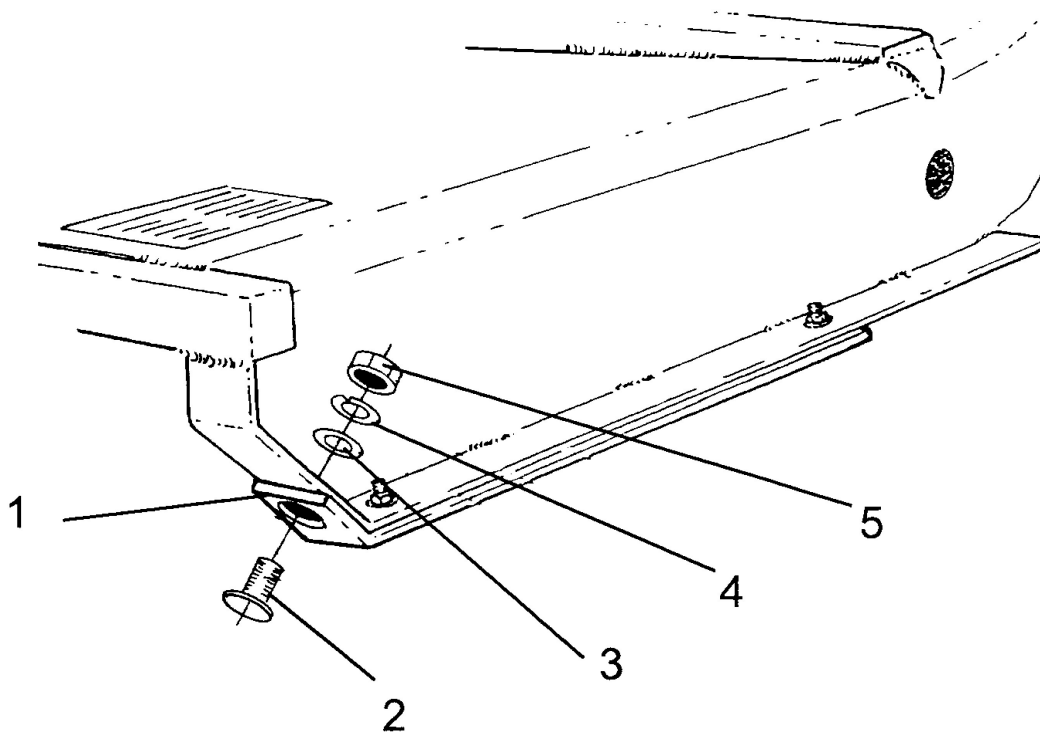
| ITEM | PART NO. | QTY. | DESCRIPTION |
|------|------------|------|-------------------------|
| | 0702310000 | 1 | OFFSET ADAPTER 13 |
| 1 | 0702310100 | 1 | ADAPTER, 3PT M/F WLDMNT |
| 2 | 0702310001 | 1 | STABELIZER BRACE BAR |
| 3 | 0702310300 | 1 | BRACE, LUG CHAIN WLDMNT |
| 4 | 0702310200 | 1 | LUG, WLDMNT LIFT |
| 5 | 511027 | 2 | PIN, 7/8 |
| 6 | 7A14924 | 2 | BOLT, HEX HEAD 7/8 |
| 7 | 15B1400 | 4 | WASHER, 7/8 |
| 8 | 423013 | 4 | BUSHING, PIVOT |
| 9 | 5JRC1490 | 2 | LOCKNUT, TOPLOCK 7/8 |
| 10 | 3W6 | 2 | PIN, RETAINING |
| 11 | 7A81336 | 4 | BOLT, HEX HEAD 1/2 |
| 12 | 13800 | 4 | LOCKWASHER |
| 13 | 00001200 | 4 | NUT, HEX 1/2 |
| 14 | 7AH5121636 | 1 | BOLT, HEX HEAD 3/4 |
| 15 | 595062 | 1 | BUSHING |
| 16 | 5JRC12160 | 1 | LOCKNUT, TOPLOCK 3/4 |
| 17 | 7AH5101816 | 2 | BOLT, HEX HEAD 5/8 |

OFFSET HITCH ADAPTER (OPTION)

Continued...

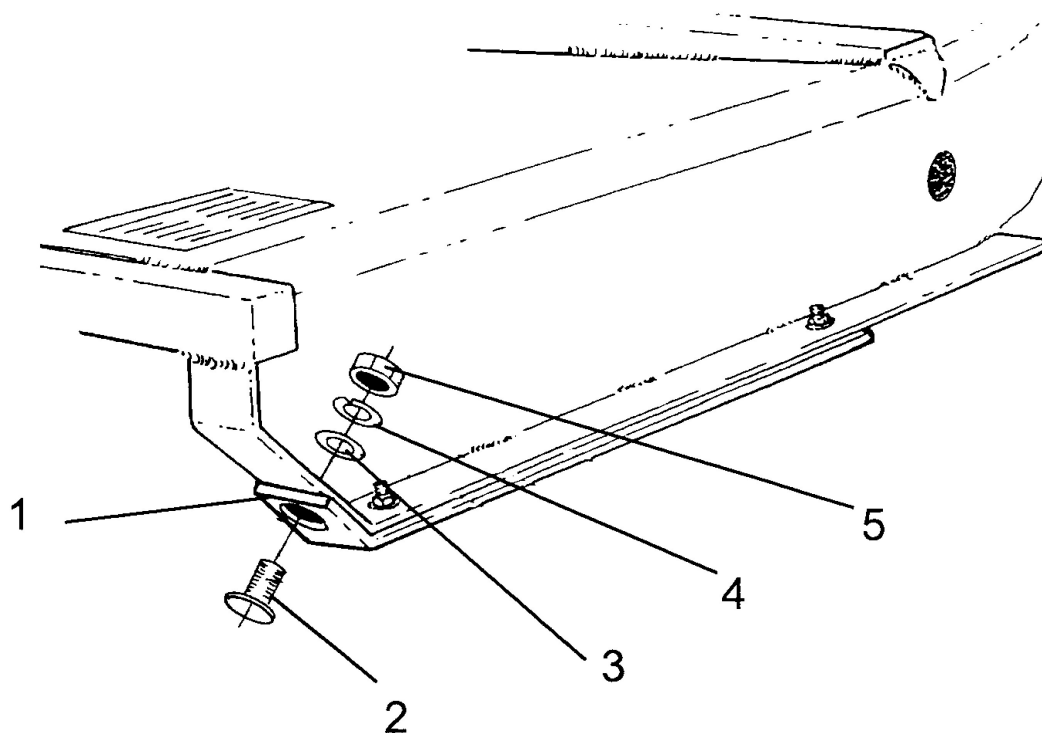
| ITEM | PART NO. | QTY. | DESCRIPTION |
|------|----------|------|----------------------|
| 18 | 00749136 | 2 | LOCKNUT, TOPLOCK 5/8 |
| 19 | 743013 | 2 | BUSHING |

SKID SHOE - A60



| ITEM | PART NO. | QTY. | DESCRIPTION |
|------|----------|------|----------------------------|
| 1 | 00774704 | 2 | RUNNER, SKID SHOE LH OR RH |
| 2 | 2A361612 | 6 | BOLT, PLOW 3/8 |
| 3 | 00011100 | 6 | FLATWASHER STD, 3/8 |
| 4 | 00012101 | 6 | LOCKWASHER, 3/8 |
| 5 | 00013901 | 6 | NUT, HEX 3/8 |

SKID SHOE - A72



| ITEM | PART NO. | QTY. | DESCRIPTION |
|------|----------|------|----------------------------|
| 1 | 00774704 | 2 | RUNNER, SKID SHOE LH OR RH |
| 2 | 2A361612 | 6 | BOLT, PLOW 3/8 |
| 3 | 00011100 | 6 | FLATWASHER STD, 3/8 |
| 4 | 00012101 | 6 | LOCKWASHER, 3/8 |
| 5 | 00013901 | 6 | NUT, HEX 3/8 |



TO THE OWNER/OPERATOR/DEALER

To keep your implement running efficiently and safely, read your manuals thoroughly and follow these directions and the Safety Messages in this Manual. The Table of Contents clearly identifies each section where you can easily find the information you need.

The OCCUPATIONAL SAFETY AND HEALTH ACT (1928.51 Subpart C) makes these minimum safety requirements of tractor operators:

REQUIRED OF THE OWNER

1. Provide a Roll-Over-Protective Structure that meets the requirements of this standard.
2. Provide seat belts that meet the requirements of this paragraph of this standard and SAE J4C.
3. Ensure that each employee uses such seat belt while the tractor is moving.
4. Ensure that each employee tightens the seat belt sufficiently to confine the employee to the protected area provided by the ROPS.

REQUIRED OF THE OPERATOR

1. Securely fasten seat belt if the tractor has a ROPS.
2. Where possible, avoid operating the tractor near ditches, embankments, and holes.
3. Reduce speed when turning, crossing slopes, and on rough, slick, or muddy surfaces.
4. Stay off slopes too steep for safe operation.
5. Watch where you are going, especially at row ends, on roads, and around trees.
6. Do not permit others to ride.
7. Operate the tractor smoothly, no jerky turns, starts, or stops.
8. Hitch only to the draw bar and hitch points recommended by the tractor manufacturer.
9. When the tractor is stopped, set brakes securely and use park lock, if available.



Keep children away from danger all day, every day...



Equip tractors with rollover protection (ROPS) and keep all machinery guards in place...



Please work, drive, play and live each day with care and concern for your safety and that of your family and fellow citizens.

ALAMO INDUSTRIAL

Limited Warranty

1. Limited Warranties

- 1.01. Alamo industrial warrants for one year from the purchase date to the original non-commercial, governmental, or municipal purchaser ("purchaser") and warrants for six months to the original commercial or industrial purchaser ("purchaser") that the goods purchased are free from defects in material or workmanship.
- 1.02. Manufacturer will replace for the purchaser any part or parts found, upon examination at one of its factories, to be defective under normal use and service due to defects in material or workmanship.
- 1.03. This limited warranty does not apply to any part of the goods which has been subjected to improper or abnormal use, negligence, alteration, modification, or accident, damaged due to lack of maintenance or use of wrong fuel, oil, or lubricants, or which has served its normal life. This limited warranty does not apply to any part of any internal combustion engine, or expendable items such as blades, shields, guards, or pneumatic tires except as specifically found in your operator's manual.
- 1.04. Except as provided herein, no employee, agent, dealer, or other person is authorized to give any warranties of any nature on behalf of manufacturer.

2. Remedies And Procedures

- 2.01. This limited warranty is not effective unless the purchaser returns the registration and warranty form to manufacturer within 30 days of purchase.
- 2.02. Purchaser claims must be made in writing to the authorized dealer ("dealer") from whom purchaser purchased the goods or an approved authorized dealer ("dealer") within 30 days after purchaser learns of the facts on which the claim is based.
- 2.03. Purchaser is responsible for returning the goods in question to the dealer.
- 2.04. If after examining the goods and/or parts in question, manufacturer finds them to be defective under normal use and service due to defects in material or workmanship, manufacturer will:
 - (A) repair or replace the defective goods or part(s) or
 - (B) reimburse purchaser for the cost of the part(s) and reasonable labor charges (as determined by manufacturer) if purchaser paid for the repair and/or replacement prior to the final determination of applicability of the warranty by manufacturer. The choice of remedy shall belong to manufacturer.
- 2.05. Purchaser is responsible for any labor charges exceeding a reasonable amount as determined by manufacturer and for returning the goods to the dealer, whether or not the claim is approved. Purchaser is responsible for the transportation cost for the goods or part(s) from the dealer to the designated factory.

3. Limitation Of Liability

- 3.01. Manufacturer disclaims any express (except as set forth herein) and implied warranties with respect to the goods including, but not limited to, merchantability and fitness for a particular purpose.
- 3.02. Manufacturer makes no warranty as to the design, capability, capacity, or suitability for use of the goods.
- 3.03. Except as provided herein, manufacturer shall have no liability or responsibility to purchaser or any other person or entity with respect to any liability, loss, or damage caused or alleged to be caused directly or indirectly by the goods including, but not limited to, any indirect, special, consequential, or incidental damages resulting from the use or operation of the goods or any breach of this warranty. Notwithstanding the above limitations and warranties, manufacturer's liability hereunder for damages incurred by purchaser or others shall not exceed the price of the goods.
- 3.04. No action arising out of any claimed breach of this warranty or transactions under this warranty may be brought more than two (2) years after the cause of action has occurred.

4. Miscellaneous

- 4.01. Proper venue for any lawsuits arising from or related to this limited warranty shall be only in Guadalupe county, Texas.
- 4.02. Manufacturer may waive compliance with any of the terms of this limited warranty, but no waiver of any terms shall be deemed to be a waiver of any other term.
- 4.03. If any provision of this limited warranty shall violate any applicable law and is held to be unenforceable, then the invalidity of such provision shall not invalidate any other provisions herein.
- 4.04. Applicable law may provide rights and benefits to purchaser in addition to those provided herein.

Keep for your records

Attention: Purchaser should fill in the blanks below for his reference when buying repair parts and/or for proper machine identification when applying for warranty.

Alamo Industrial Implement Model _____ Serial Number _____
Date Purchased _____ Dealer _____

Attention:
Read your operator's manual



ALAMO INDUSTRIAL
1502 E. Walnut
Seguin, Texas 78155
830-379-1480



BUILT SHARPER®

An Alamo Group Company

1502 E. Walnut St.
Seguin, Texas 78155



Sales and Marketing

Tel 800.882.5762

Fax 830.379.0864

support@alamo-industrial.com

Warranty Registration/Claims

www.alamoparts.com

Return Authorizations

Online Part Orders

Technical Information

www.alamoparts.com

Tel 800.356.6286

Fax 800.322.5141

www.alamo-industrial.com

