



Published 07-05

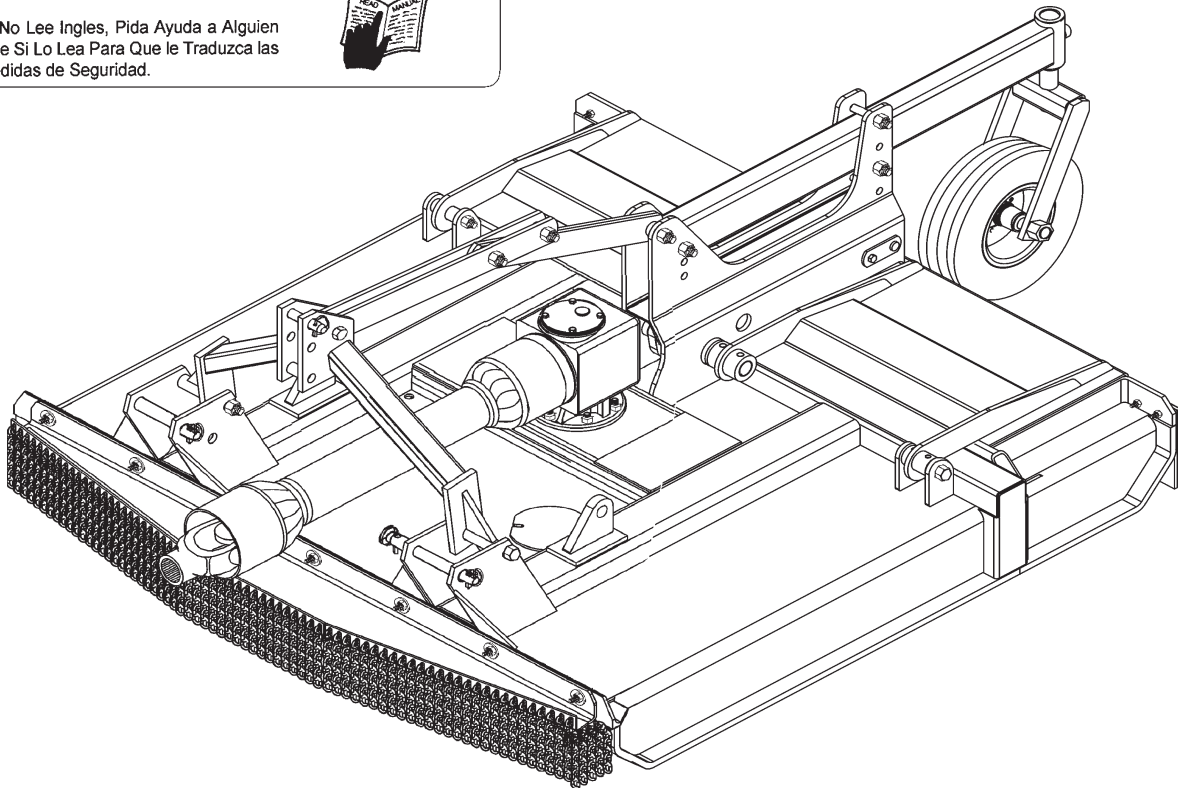
Effective Serial No. 10240 through Current

Part No. 00772057P

PARTS MANUAL

ATENCIÓN! LEA EL INSTRUCTIVO

Si No Lee Ingles, Pida Ayuda a Alguien
Que Si Lo Lea Para Que le Traduzca las
Medidas de Seguridad.



An Operator's Manual was shipped with the equipment in the Manual Canister. This Operator's Manual is an integral part of the safe operation of this machine and must be maintained with the unit at all times. **READ, UNDERSTAND, and FOLLOW** the Safety and Operation Instructions contained in this manual before operating the equipment. If the Operator's Manual is not with the equipment, contact your dealer or Alamo Industrial (830-379-1480) to obtain a Free copy before operating the equipment.

Alamo Industrial

1502 E. Walnut
Seguin, Texas 78155
830-379-1480



TO THE OWNER/OPERATOR/DEALER

All implements with moving parts are potentially hazardous. There is no substitute for a cautious, safe-minded operator who recognizes the potential hazards and follows reasonable safety practices. The manufacturer has designed this implement to be used with all its safety equipment properly attached to minimize the chance of accidents.

BEFORE YOU START!! Read the safety messages on the implement and shown in your manual. Observe the rules of safety and common sense!

| | | | |
|---|---|--|--|
|  <h1 style="margin: 0;">DANGER</h1> | | | |
| <p>FAILING TO FOLLOW SAFETY MESSAGES AND OPERATING INSTRUCTIONS CAN CAUSE SERIOUS BODILY INJURY OR EVEN DEATH TO OPERATOR AND OTHERS IN THE AREA.</p> | | | |
| <p>1.</p>  <p>READ MANUAL</p> | <p>2. NO RIDERS. NO CHILDREN OPERATORS.</p>  | <p>3. USE SAFETY SHOES, HARD HAT, SAFETY GLASSES, SEAT BELTS, & ROPS</p>  | <p>4. BLOCK UP SECURELY BEFORE WORKING UNDER.</p>  |
| <p>1. Study and understand operator's manual, safety signs, and instructional decals for tractor and implement to prevent misuse, abuse, and accidents.</p> <ul style="list-style-type: none"> Learn how to stop engine suddenly in an emergency. Be alert for passerby and especially children. <p>2. Allow no children on or near implement or tractor. Allow no riders on tractor and implement. Falling off may cause serious injury or death from being run over by tractor or cutter or contact with rotating blades.</p> <p>3. Operate only with tractor having Roll-Over Protective Structure (ROPS) and with seatbelt fastened securely and snugly to prevent injury and possible death from falling off or tractor overturn. Personal Protective Equipment such as Hard Hat, Safety Glasses, Safety Shoes, and Ear Plugs are Recommended.</p> <p>4. Block up or support raised machine and all lifted components securely before putting hands or feet under or working underneath a fully lifted component to prevent crushing injury or death from sudden dropping or inadvertent operation of controls. Make certain area is clear before lowering or folding.</p> <p>5. Before transporting, put Lift Lever in detent or full-lift position. Secure the implement for transport by installing Cylinder Stops or Transport Pin on Pull-type implement center axle and Wing Transport Locks on folding implements.</p> <ul style="list-style-type: none"> Attach Safety Chain to cutter and towing unit securely. See Operator's Manual. <p>6. Make certain that the SMV sign, Warning Lights, and Reflectors are clearly visible. Follow local traffic codes.</p> <p>7. Never operate with Cutting Head raised if passerby, bystanders, or traffic are in the area to reduce possibility of injury or death from Objects thrown by Blades under Guard or cutter structure.</p> <p>8. Before dismounting, secure implement in transport position or lower to ground.</p> <ul style="list-style-type: none"> Put tractor in park or set the brake, disengage PTO, stop engine, and remove key, and wait until noise of rotation has ceased to prevent entanglement in rotating parts which can cause injury or death. Never mount or dismount a moving vehicle. Crushing from runover may cause injury or death. | | | |
| <p>5. TRANSPORT SAFELY, LOCK UP.</p>  | <p>6. USE SMV, LIGHTS, & REFLECTORS.</p>  | <p>7. DO NOT OPERATE WITH CUTTER OR WING RAISED.</p>  | <p>8. DO NOT MOUNT OR DISMOUNT WHILE MOVING.</p>  <p style="text-align: right; font-size: small;">00749117</p> |

WARRANTY INFORMATION:

Read and understand the complete Warranty Statement found in this Manual. Fill out the Warranty Registration Form in full and return it to within 30 Days. Make certain the Serial Number of the Machine is recorded on the Warranty Card and on the Warranty Form that you retain.

PARTS SECTION

Parts Section -1

PARTS ORDERING GUIDE

The following instructions are offered to help eliminate needless delay and error in processing purchase orders for the equipment in this section.

1. The Parts Section is prepared in logical sequence and grouping of parts that belong to the basic machine featured in this manual. Part Numbers and Descriptions are given to help locate the parts and quantities required.
2. The Purchase Order must include the name and address of the person or organization ordering the parts, who should be charged, and if possible, the serial number of the machine for which the parts are ordered.
3. The Purchase Order must clearly list the quantity of each part, the complete and correct part number, and the basic name of the part.
4. The Manufacturer reserves the right to substitute parts where applicable.
5. Some parts are unlisted items which are special production items not normally stocked and are subject to special handling. Request a quotation for such parts before sending a Purchase Order.
6. The Manufacturer reserves the right to change prices without prior notice.

NOTE: Please refer to The Safety Section in the front of this Manual for the proper Part Number when ordering Replacement Safety Decals.

NOTE: Please note that the appearance of some parts may vary from the art or photographs shown in the manual.



For maximum safety and to guarantee optimum product reliability, always use genuine Alamo Group Parts. The use of inferior replacement parts may cause premature or catastrophic failure which could result in serious injury or death. Direct any questions regarding parts to:

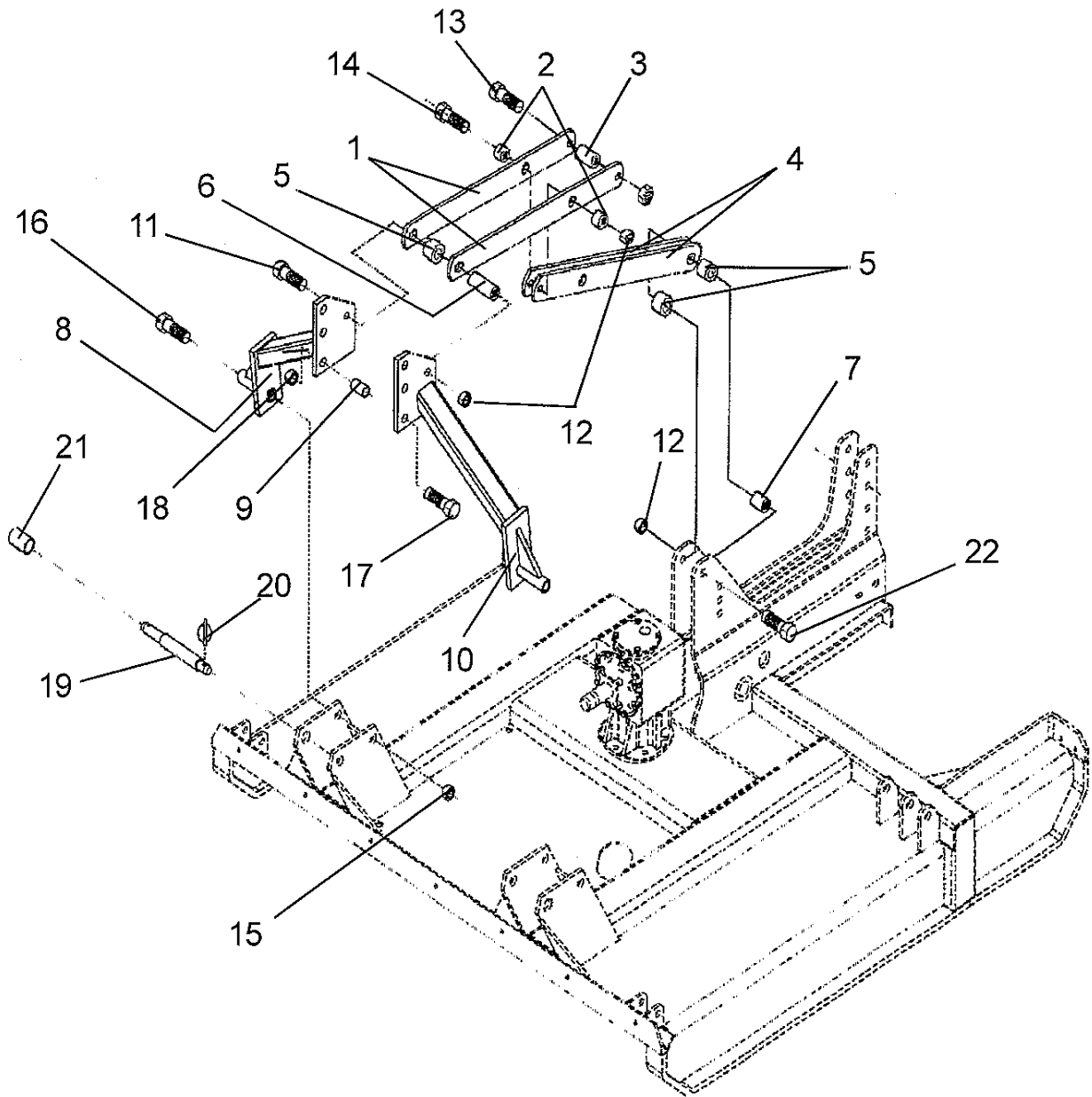


Alamo Industrial
1502 E. Walnut
Seguin, Texas 78155
830-379-1480

PART NAME INDEX

| | |
|---|----|
| A-FRAME ASY..... | 4 |
| BLADE CARRIER ASY. W / BLADES | 11 |
| CASTER WHEEL & HUB ASY. | 14 |
| CHAIN GUARD ASY. | 26 |
| DRIVELINE ASY - 1000 RPM - S/N GO72-10239 & DOWN | 18 |
| DRIVELINE ASY - 1000 RPM - S/N GO72-10240 & UP | 20 |
| DRIVELINE ASY - 540 RPM - S/N GO72-10239 & DOWN | 15 |
| DRIVELINE ASY - 540 RPM - S/N GO72-10240 & UP | 17 |
| GEARBOX ASY - 1000 RPM | 8 |
| GEARBOX ASY - 540 RPM | 6 |
| GEARBOX ATTACHMENT..... | 10 |
| HYDRAULIC CYLINDER ASY..... | 25 |
| OVER RUNNING CLUTCH ASY - S/N GO72-10239 & DOWN | 23 |
| OVER RUNNING CLUTCH ASY - S/N GO72-10240 & UP | 24 |
| REAR GUARD ASY..... | 27 |
| SLIP CLUTCH ASY - 6 SPRING CLUTCH - S/N GO72-10240 & UP | 22 |
| SLIP CLUTCH ASY - 8 SPRING CLUTCH - S/N GO72-10239 & DOWN | 21 |
| TAIL WHEEL ASY. | 12 |
| WHEEL ASY..... | 13 |

A-FRAME ASY.

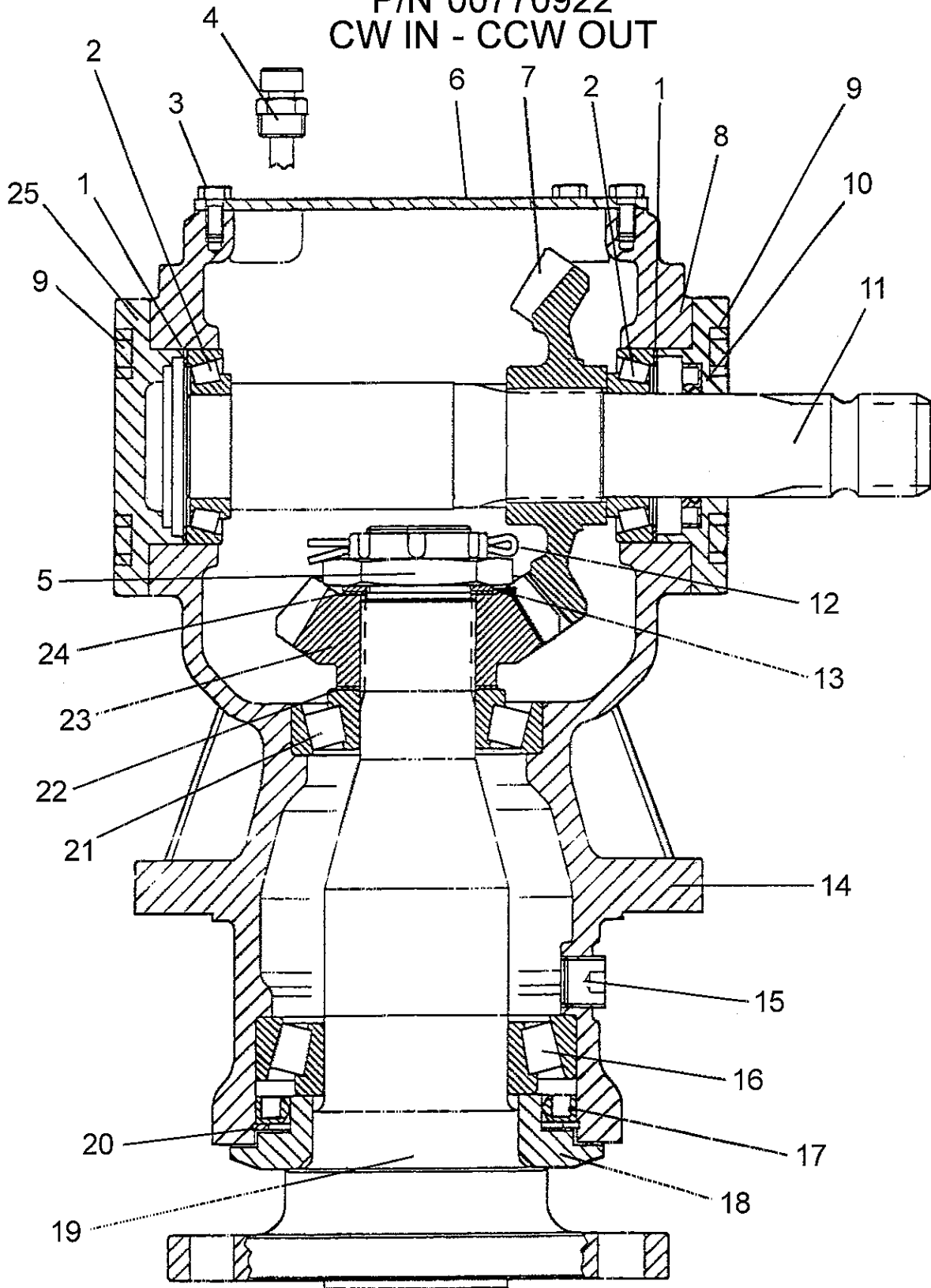


A-FRAME ASY.

| ITEM | PART NO. | QTY. | DESCRIPTION |
|------|------------|------|--------------------|
| 1 | 00771190 | 2 | REAR BRACE |
| 2 | 0758550070 | 2 | BUSHING |
| 3 | 641155 | 1 | BUSHING |
| 4 | 00773688 | 2 | REAR FLAT BRACE |
| 5 | 00771471 | 3 | SPACER |
| 6 | 0758550030 | 1 | BUSHING |
| 7 | 00771399 | 1 | SPACER |
| 8 | 00758327 | 1 | A-FRAME WLD'MT, RH |
| 9 | 0758550031 | 1 | BUSHING |
| 10 | 00758328 | 1 | A-FRAME WLD'MT, LH |
| 11 | 00009500 | 1 | BOLT |
| 12 | 00037200 | 7 | LOCKNUT |
| 13 | 00007800 | 1 | BOLT |
| 14 | 02881000 | 1 | BOLT |
| 15 | 02030300 | 4 | LOCKNUT |
| 16 | 00016700 | 2 | BOLT |
| 17 | 7AH5161436 | 1 | BOLT |
| 18 | 5JRC16140 | 1 | LOCKNUT |
| 19 | 69141 | 2 | HITCH PIN |
| 20 | 2196 | 2 | LYNCH PIN. |
| 21 | 69134 | 2 | BUSHING |
| 22 | 00748786 | 1 | BOLT |

GEARBOX ASY - 540 RPM

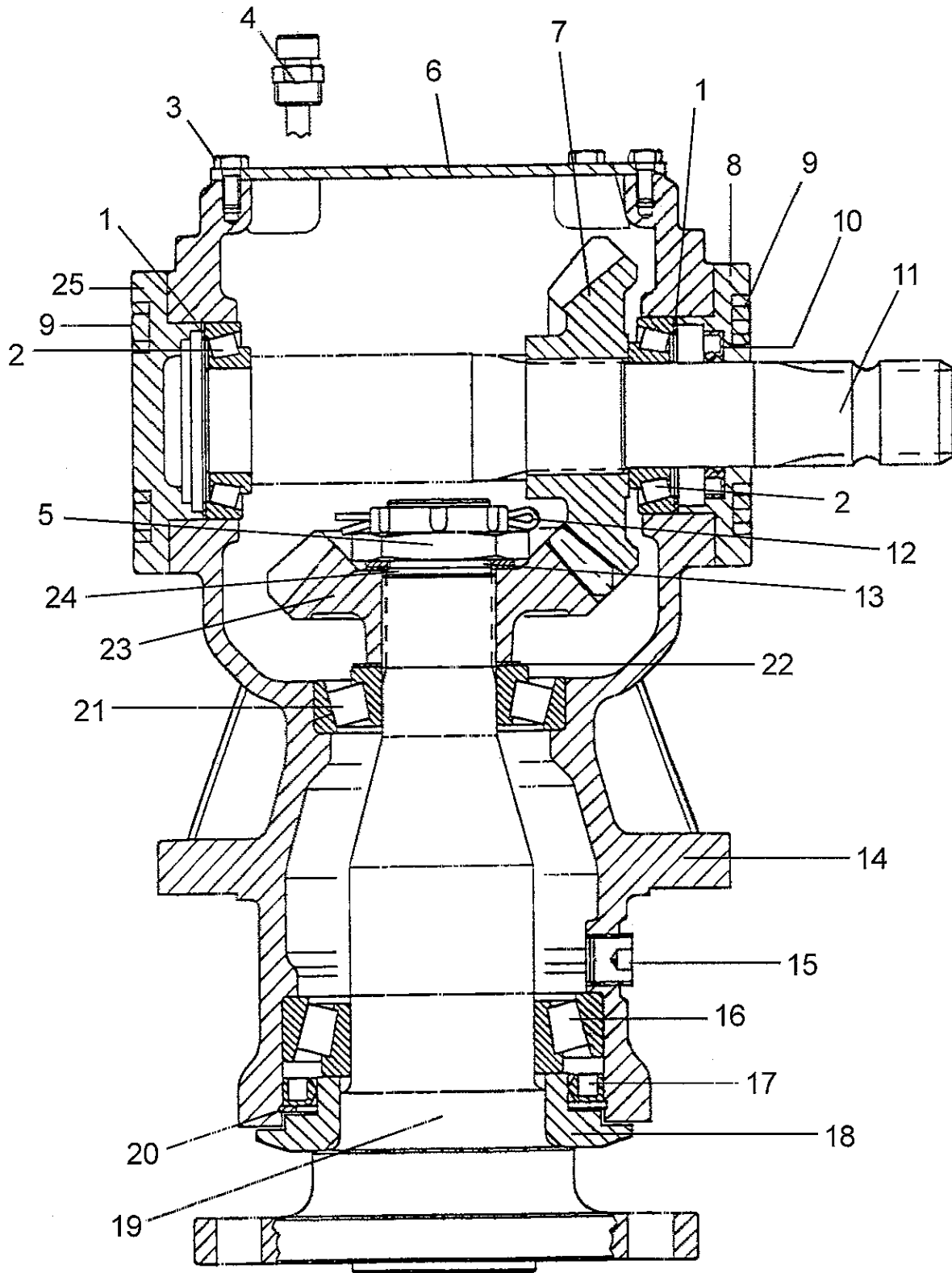
P/N 00770922
CW IN - CCW OUT



GEARBOX ASY - 540 RPM

| ITEM | PART NO. | QTY. | DESCRIPTION |
|------|----------|------|-------------------|
| 1 | 00771854 | 1 | SHIM |
| 2 | 00755615 | 2 | BEARING |
| 3 | 00771856 | 6 | BOLT |
| 4 | 00771857 | 1 | VENT PLUG |
| 5 | 00771858 | 1 | NUT |
| 6 | 00771859 | 1 | INSPECTION COVER |
| 7 | 00771860 | 1 | GEAR (27 TOOTH) |
| 8 | 00771881 | 1 | COVER |
| 9 | 00771862 | 8 | BOLT |
| 10 | 00771863 | 1 | DOUBLE LIP SEAL |
| 11 | 00771864 | 1 | INPUT SHAFT |
| 12 | 01422502 | 1 | COTTER PIN |
| 13 | 00771880 | 1 | SHIM |
| 14 | 00771867 | 1 | HOUSING |
| 15 | 00749508 | 1 | PLUG |
| 16 | 00771869 | 1 | LOWER BEARING |
| 17 | 00771870 | 1 | OIL SEAL |
| 18 | 00771871 | 1 | BUSHING |
| 19 | 00771872 | 1 | OUTPUT SHAFT |
| 20 | 00771873 | 1 | SNAP RING |
| 21 | 00771874 | 1 | BEARING |
| 22 | 00771875 | 1 | SHIM |
| 23 | 00771876 | 1 | GEAR (19 TOOTH) |
| 24 | 00771879 | 1 | SHIM |
| 25 | 00771878 | 1 | COVER |

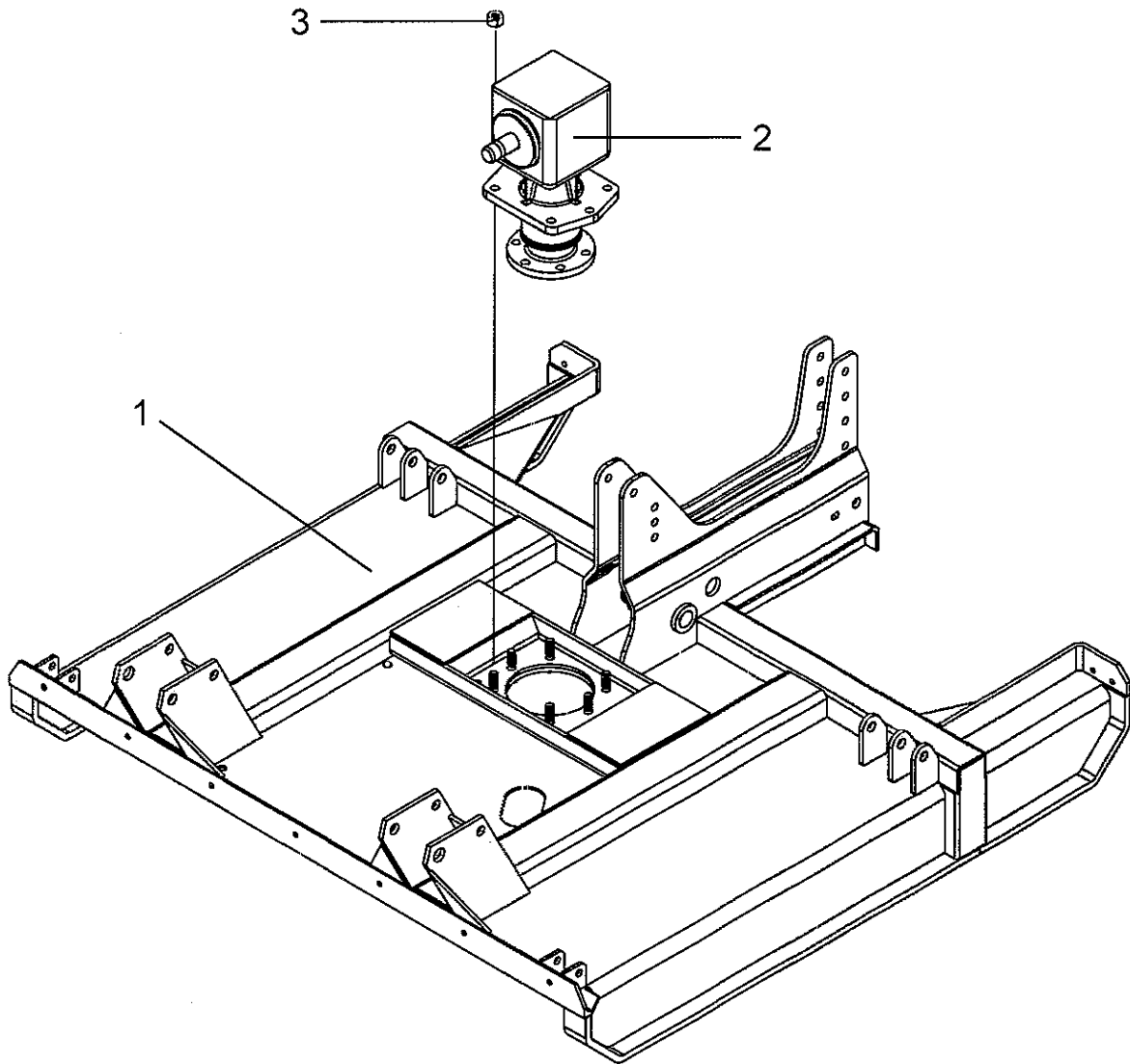
GEARBOX ASY - 1000 RPM



GEARBOX ASY - 1000 RPM

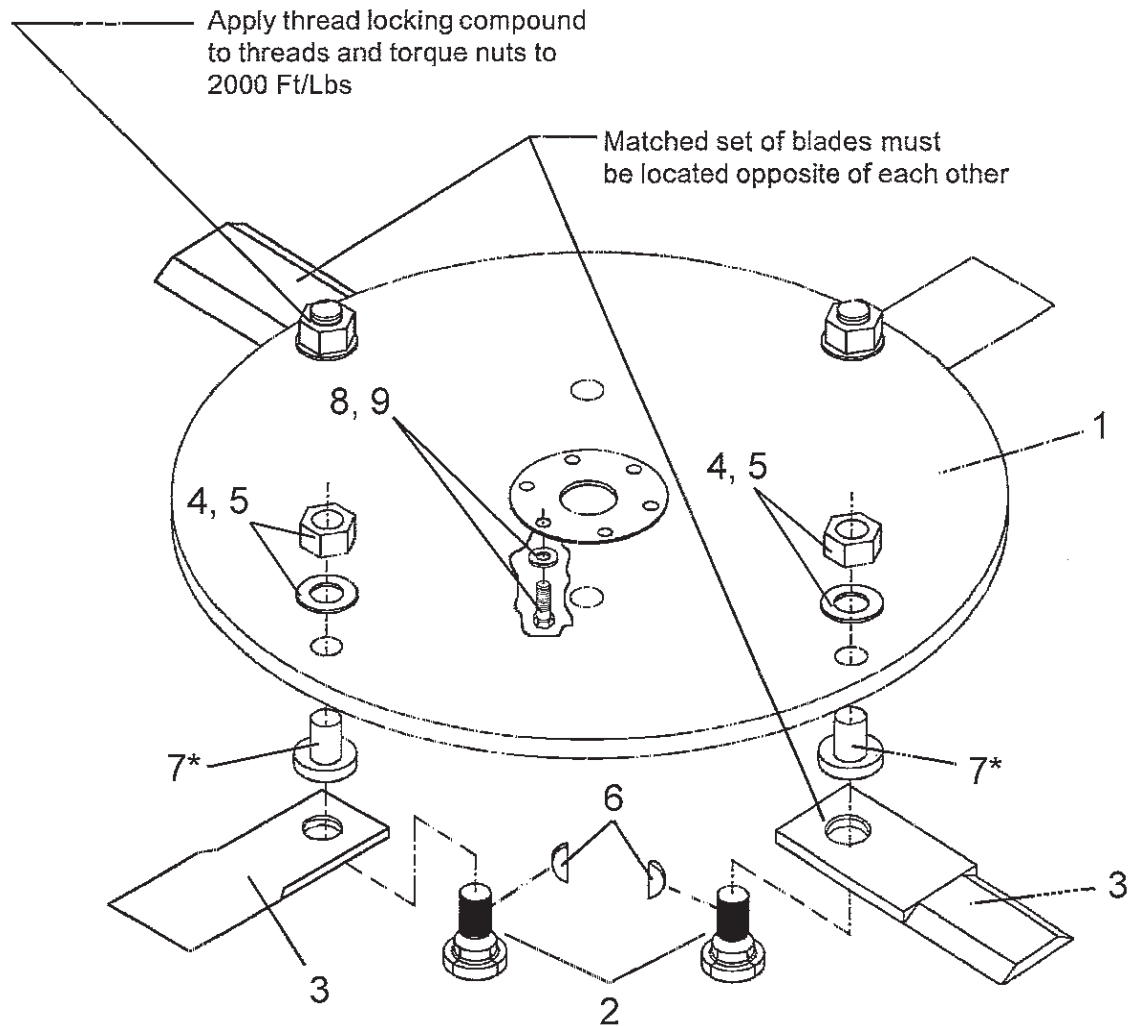
| ITEM | PART NO. | QTY. | DESCRIPTION |
|------|----------|------|-------------------|
| 1 | 00771854 | 1 | SHIM |
| 2 | 00755615 | 2 | BEARING |
| 3 | 00771856 | 6 | BOLT |
| 4 | 00771857 | 1 | VENT PLUG |
| 5 | 00771858 | 1 | NUT |
| 6 | 00771859 | 1 | INSPECTION COVER |
| 7 | 00771861 | 1 | GEAR (21 TOOTH) |
| 8 | 00771881 | 1 | COVER |
| 9 | 00771862 | 8 | BOLT |
| 10 | 00771863 | 1 | DOUBLE LIP SEAL |
| 11 | 00771864 | 1 | INPUT SHAFT |
| 12 | 01422502 | 1 | COTTER PIN |
| 13 | 00771880 | 1 | SHIM |
| 14 | 00771867 | 1 | HOUSING |
| 15 | 00749508 | 1 | PLUG |
| 16 | 00771869 | 1 | LOWER BEARING |
| 17 | 00771870 | 1 | OIL SEAL |
| 18 | 00771871 | 1 | BUSHING |
| 19 | 00771872 | 1 | OUTPUT SHAFT |
| 20 | 00771873 | 1 | SNAP RING |
| 21 | 00771874 | 1 | BEARING |
| 22 | 00771875 | 1 | SHIM |
| 23 | 00771877 | 1 | GEAR (21 TOOTH) |
| 24 | 00771879 | 1 | SHIM |
| 25 | 00771878 | 1 | COVER |

GEARBOX ATTACHMENT



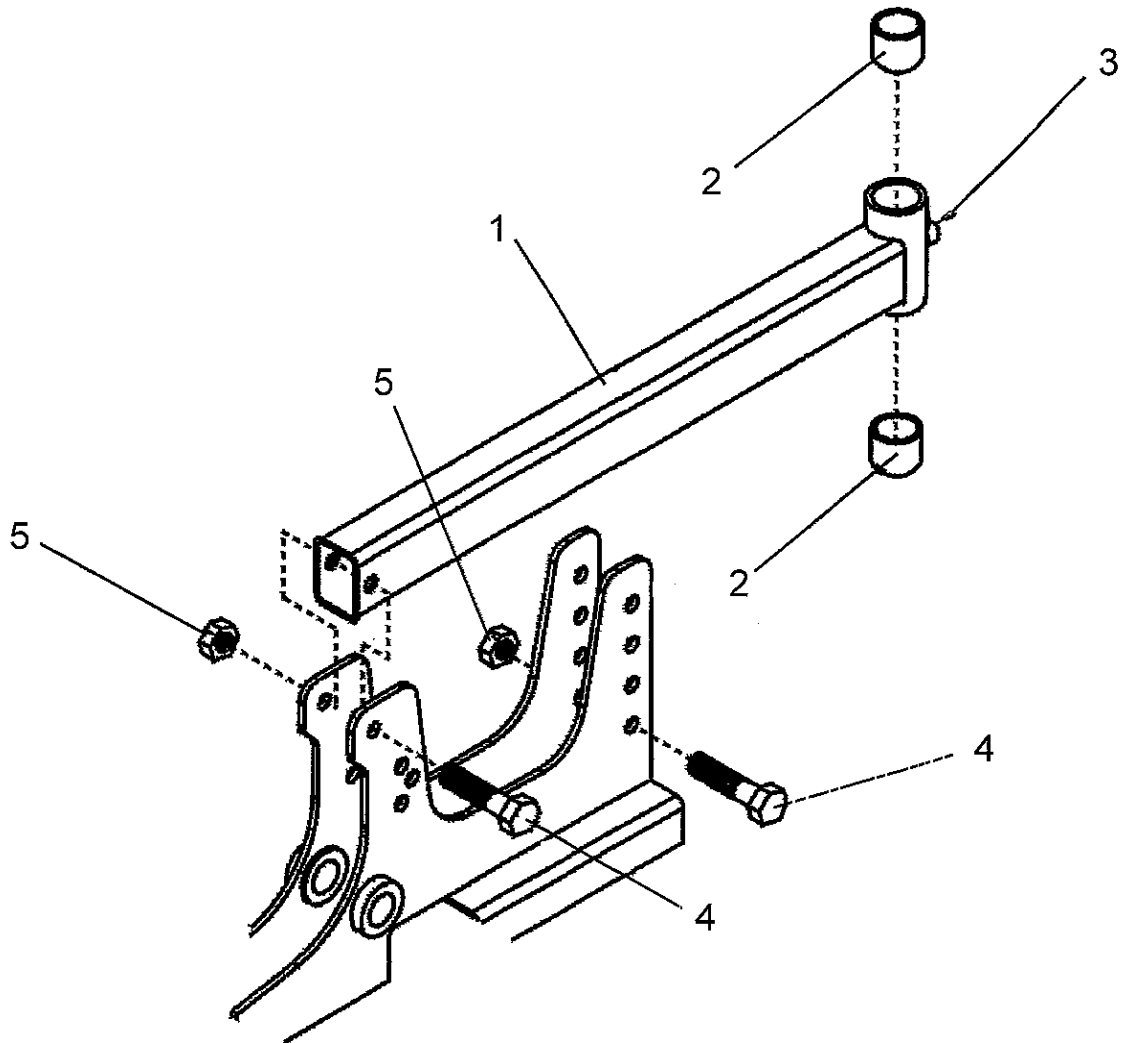
| ITEM | PART NO. | QTY. | DESCRIPTION |
|------|----------|------|----------------------------|
| 1 | 00774080 | 1 | DECK WLD'MT |
| 2 | 00770923 | 1 | GEARBOX W/ LUBE - 1000 RPM |
| | 00770922 | 1 | GEARBOX W/ LUBE - 540 RPM |
| 3 | 00037200 | 6 | LOCKNUT |

BLADE CARRIER ASY. W / BLADES



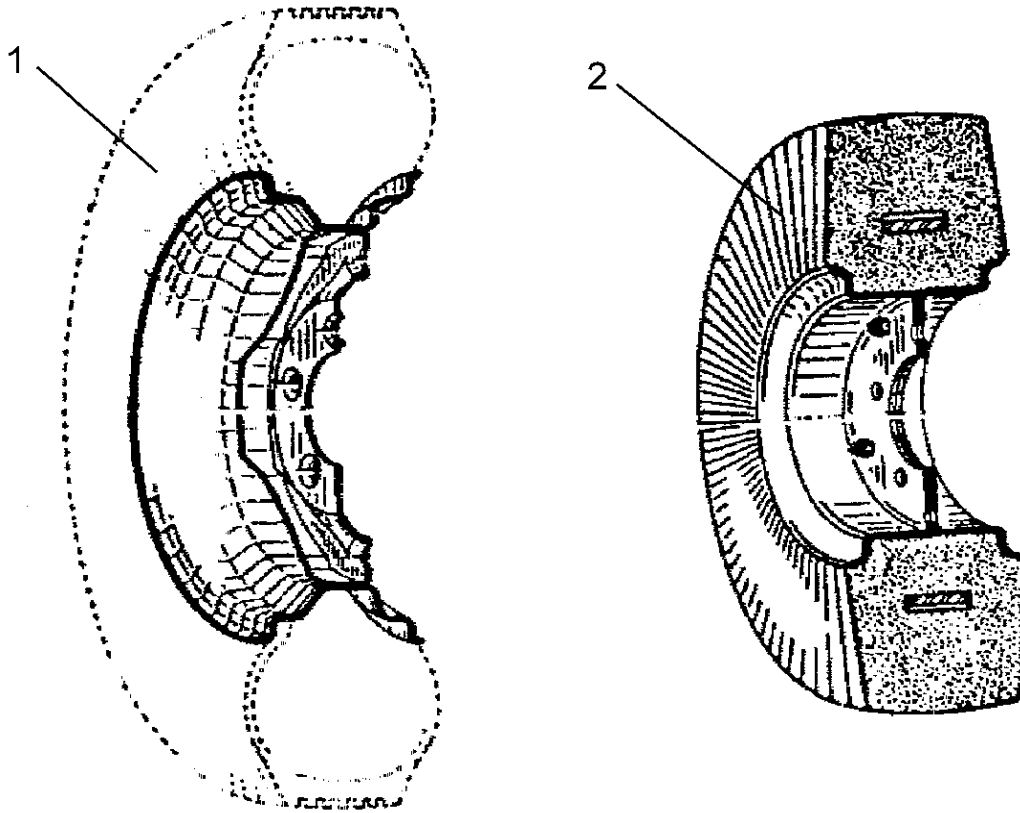
| ITEM | PART NO. | QTY. | DESCRIPTION |
|------|----------|-------|----------------------|
| 1 | 00774066 | 1 | BLADE CARRIER WLD'MT |
| 2 | 00770972 | 4 | BLADE BOLT |
| 3 | 00770971 | 2 | BLADES, MATCHED SET |
| 4 | 00770974 | 4 | FLATWASHER, HARDENED |
| 5 | 00770973 | 4 | LOCKNUT |
| 6 | PT209 | 4 | KEY |
| 7* | 00770970 | 4 | BUSHING, BROACHED |
| 8 | 00003901 | 4 REF | LOCKWASHER |
| 9 | 03200269 | 6 REF | BOLT |

TAIL WHEEL ASY.



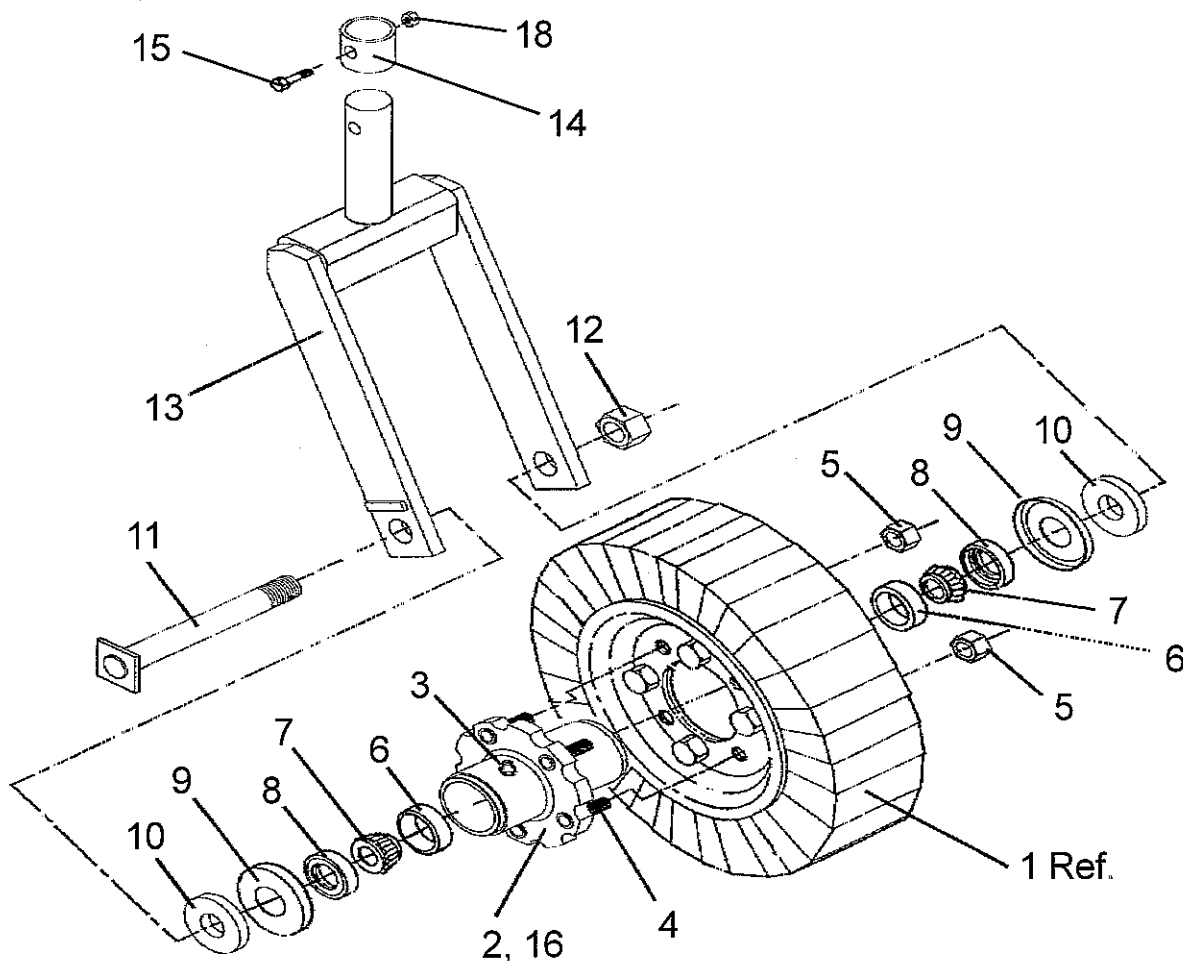
| ITEM | PART NO. | QTY. | DESCRIPTION |
|------|----------|------|------------------------|
| 1 | 00773494 | 1 | TAIL WHEEL BEAM WLD'MT |
| 2 | 54103A11 | 2 | SINTERED IRON BUSHING |
| 3 | 4720 | 1 | GREASE FITTING |
| 4 | 00748786 | 3 | BOLT |
| 5 | 00037200 | 3 | LOCKNUT |

WHEEL ASY.



| ITEM | PART NO. | QTY. | DESCRIPTION |
|------|-----------|------|----------------------------|
| 1 | 00766911A | 1 | AIRCRAFT TIRE & WHEEL ASY. |
| 2 | 00025200 | 1 | NOTAT TIRE & WHEEL ASY |

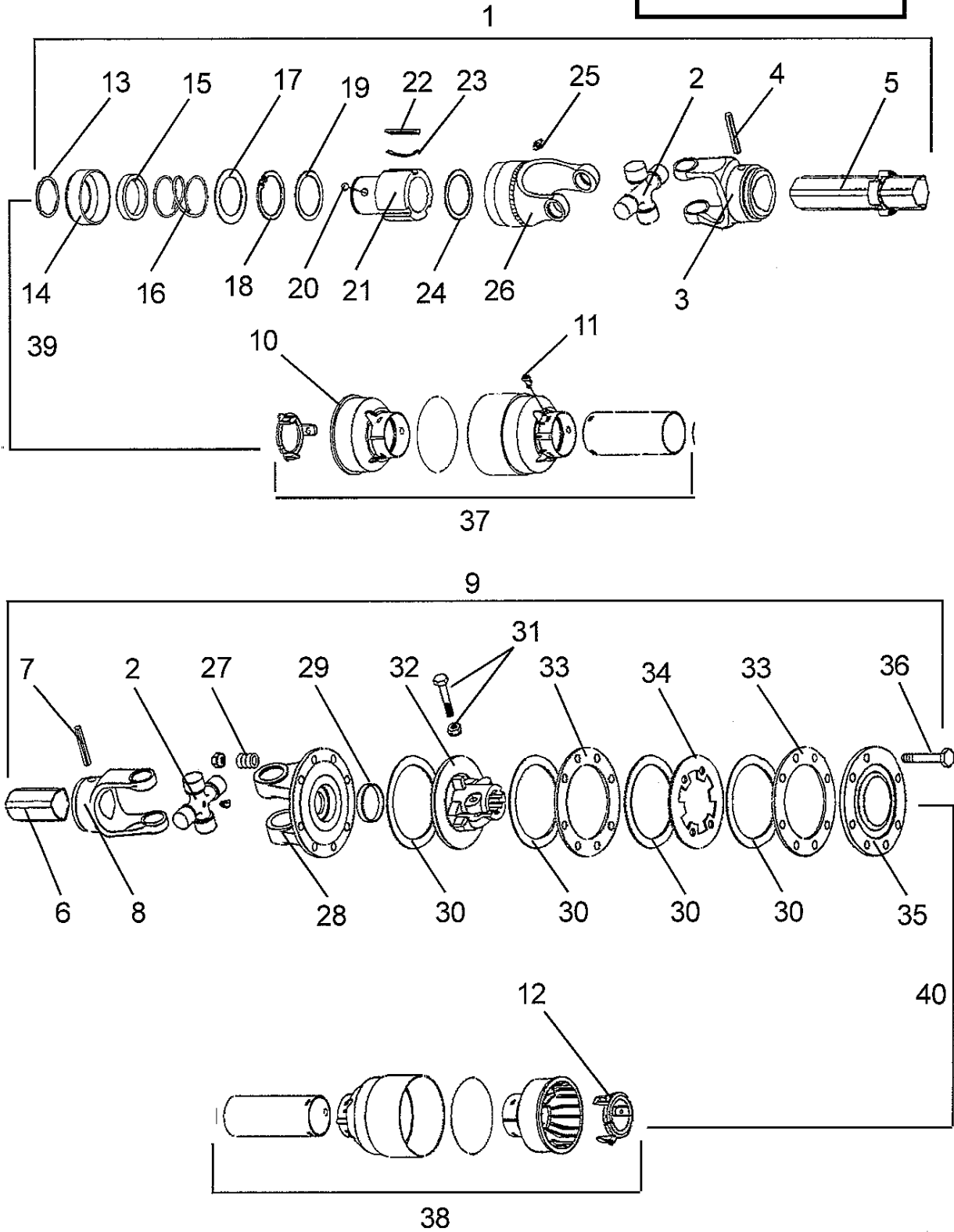
CASTER WHEEL & HUB ASY.



| ITEM | PART NO. | QTY. | DESCRIPTION |
|------|-----------|-------|----------------------------|
| 1 | 00766911A | 1 REF | AIRCRAFT TIRE & WHEEL ASY. |
| | 00025200 | 1 REF | NOTAT TIRE & WHEEL ASY. |
| 2 | 00771457 | 1 | HUB, W/ CUPS AND STUDS |
| 3 | 00003500 | 1 | GREASE FITTING |
| 4 | 00752177 | 5 | STUD BOLT |
| 5 | 00750614 | 5 | NUT |
| 6 | 00016900 | 2 | BEARING CUP |
| 7 | 00006500 | 2 | BEARING CONE |
| 8 | 00771458 | 2 | OIL SEAL |
| 9 | 00771247 | 2 | DUST CAP |
| 10 | 00771402 | 2 | TUBE SPACER |
| 11 | 00771319 | 1 | SPINDLE WLD'MT |
| 12 | 00771316 | 1 | LOCKNUT |
| 13 | 00774622 | 1 | CASTER FORK WLD'MT |
| | 00773498 | 1 | CASTER FORK WLD'MT |
| 14 | 00771206 | 1 | TUBE COLLAR |
| 15 | 00753013 | 1 | BOLT |
| 16 | 00771456 | 1 | WHEEL HUB ASY. |
| 17 | 00765807 | 2 | WASHER |
| 18 | 00001800 | 1 | LOCKNUT |

DRIVELINE ASY - 540 RPM - S/N GO72-10239 & DOWN

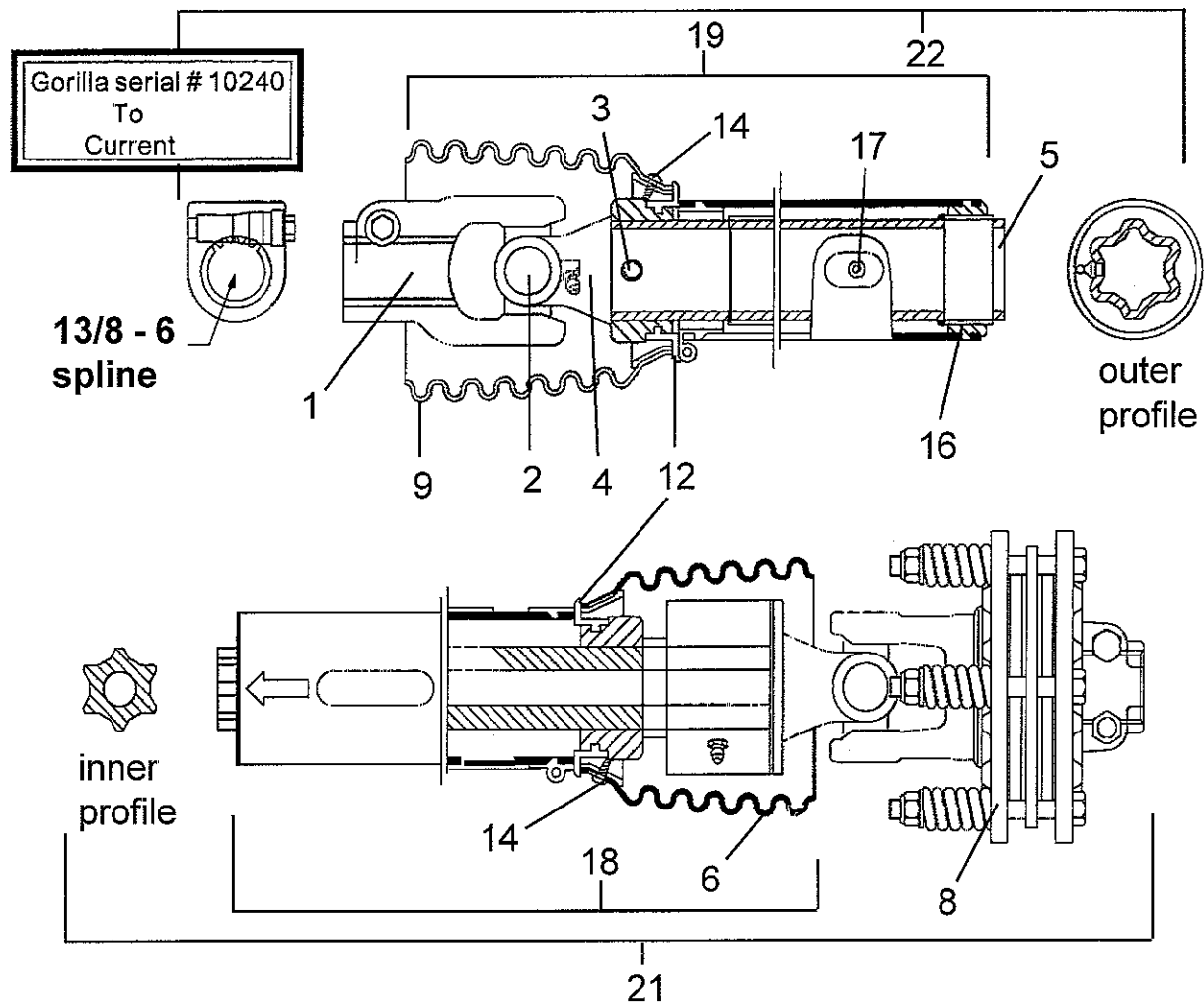
Gorilla Thru serial
10239



DRIVELINE ASY - 540 RPM - S/N GO72-10239 & DOWN

| ITEM | PART NO. | QTY. | DESCRIPTION |
|------|-----------------|------|---|
| -- | 00771368 | -- | DRIVELINE ASY (TRIANGLE SHAPED SHAFT & TUBE) |
| 1 | 00772068 | 1 | OVER RUNNING CLUTCH |
| 2 | 00753068 | 2 | UNIVERSAL JOINT (X-KIT) |
| 3 | 00766555 | 1 | YOKE, FOR OUTER TUBE (TRIANGLE SHAPED YOKE ID) |
| 4 | 00758159 | 1 | ROLL PIN |
| 5 | 00772069 | 1 | TUBE, OUTER (TRIANGLE SHAPED TUBE) |
| 6 | 00772070 | 1 | SHAFT, INNER (TRIANGLE SHAPED) |
| 7 | 00758160 | 1 | ROLL PIN |
| 8 | 00766556 | 1 | YOKE, FOR INNER SHAFT (TRIANGLE SHAPED YOKE ID) |
| 9 | 00772087 | 1 | CLUTCH & YOKE ASY. (8 SPRING CLUTCH) |
| 10 | 00765420 | 6 | LOCKING COLLAR, OUTER SHIELD |
| 11 | 00754330 | 1 | BOLT |
| 12 | 00765417 | 1 | LOCKING COLLAR, INNER SHIELD |
| 13 | 00772071 | 1 | OUTER CIRCLIP |
| 14 | 00772072 | 1 | SLIDING SLEEVE COLLAR |
| 15 | 00772073 | 1 | BALL HOLD - UP RING |
| 16 | 00772074 | 1 | SPRING |
| 17 | 00772075 | 1 | SPRING PUSH RING |
| 18 | 00772076 | 1 | INNER CIRCLIP |
| 19 | 00772077 | 1 | RETAINING WASHER |
| 20 | 00772078 | 3 | BALL |
| 21 | 00772079 | 1 | HUB |
| 22 | 00772080 | 3 | TANG |
| 23 | 00772081 | 3 | CARRIAGE SPRING |
| 24 | 00772091 | 1 | RETAINING WASHER |
| 25 | 00772082 | 2 | GREASE FITTING |
| 26 | 00772083 | 1 | OUTER YOKE, F/ OVER RUNNING CLUTCH |
| 27 | 00754303 | 8 | SPRING, F/ CLUTCH |
| 28 | 00754083 | 1 | FLANGED YOKE |
| 29 | 00754301 | 1 | BUSHING |
| 30 | 00754202 | 4 | CLUTCH LINING RING |
| 31 | 00755600 | 2 | BOLT & NUT |
| 32 | 00755599 | 1 | CLUTCH SUPPORT |
| 33 | 00754314 | 2 | INNER PLATE |
| 34 | 00754201 | 1 | INTERMEDIATE PLATE |
| 35 | 00766810 | 1 | PRESSURE PLATE |
| 36 | 00765442 | 8 | BOLT & NUT |
| 37 | 00772106 | 1 | SHIELD HALF ASY, OUTER |
| 38 | 00772107 | 1 | SHIELD HALF ASY, INNER |
| 39 | 00772084 | 1 | DRIVELINE HALF ASY, OUTER SHAFT W / SHIELD & OVER RUNNING CLUTCH (TRACTOR END) |
| 40 | 00772085 | 1 | DRIVELINE HALF ASY, INNER SHAFT W / SHIELD & CLUTCH ASY (IMPLEMENT END) |

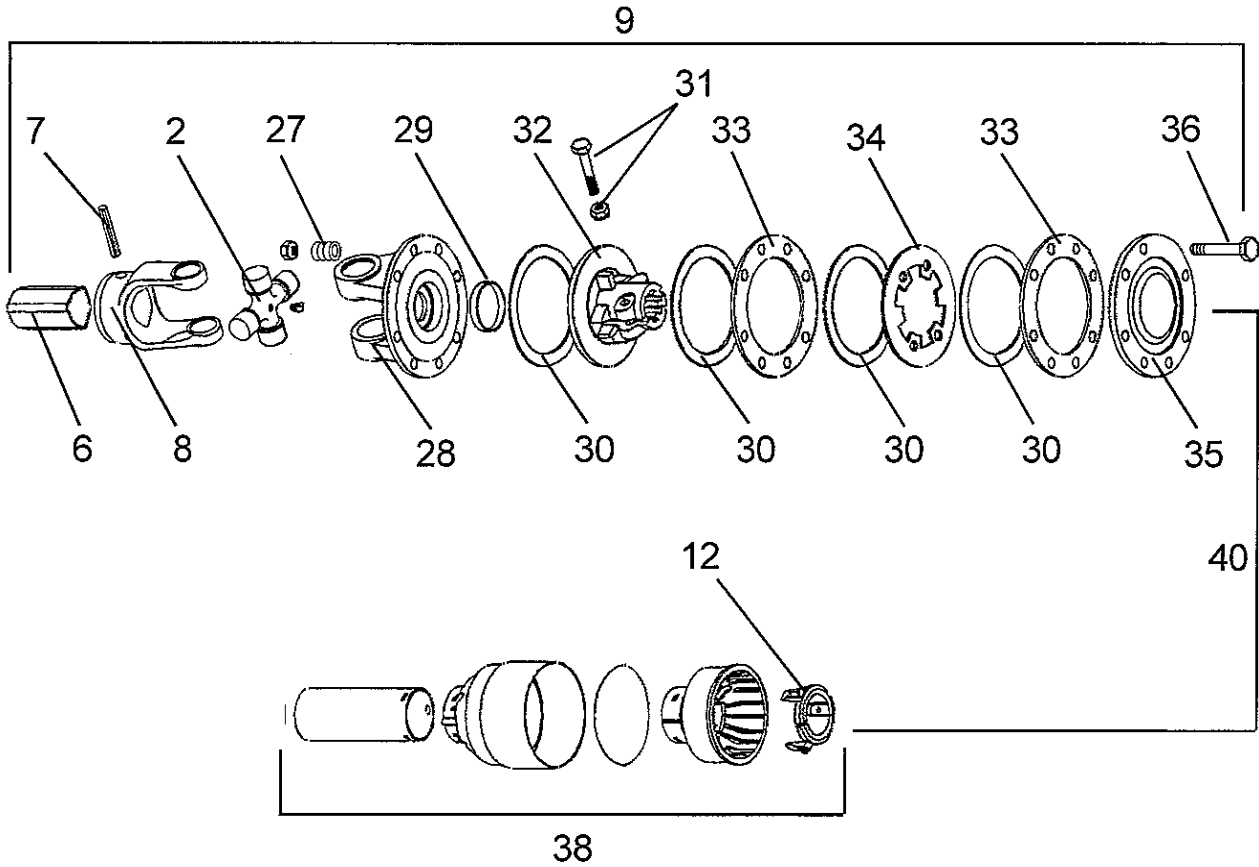
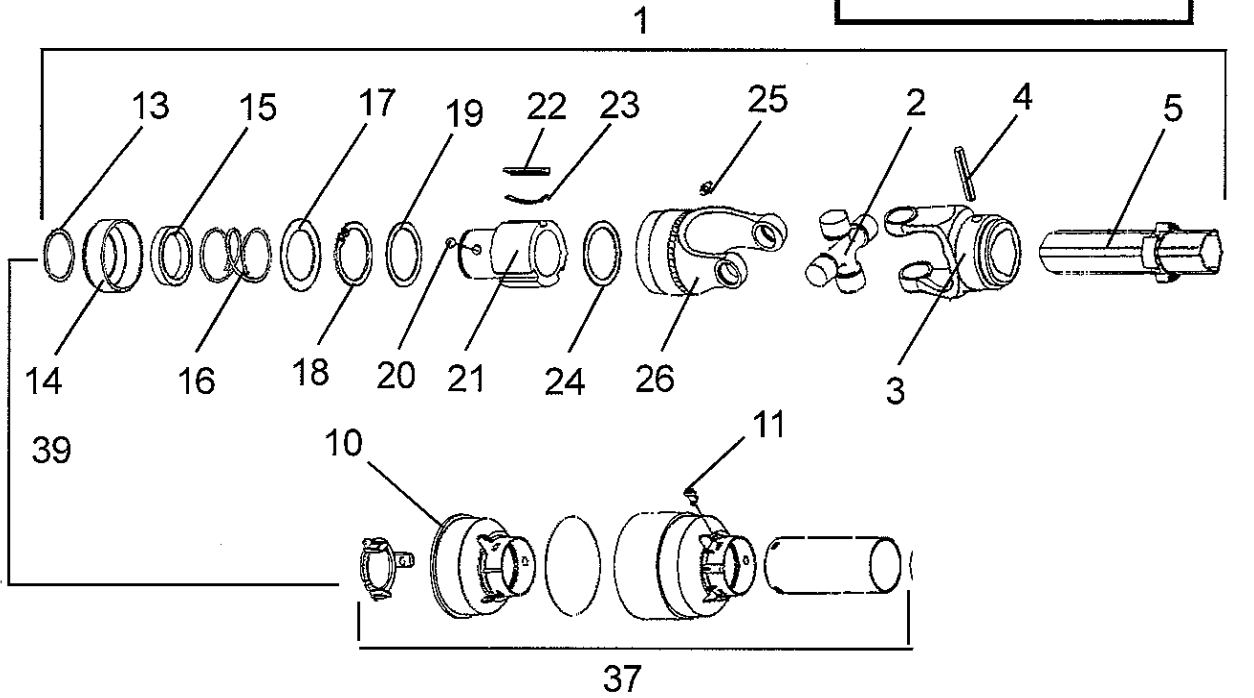
DRIVELINE ASY - 540 RPM - S/N GO72-10240 & UP



| ITEM | PART NO. | QTY. | DESCRIPTION |
|------|-----------------|------|--|
| -- | 00776315 | -- | DRIVELINE ASY, W/ CLUTCH, SHIELDS & OVER RUNNING CLUTCH(STAR SHAPED SHAFT & TUBE) |
| 1 | 00776316 | 1 | YOKE |
| 2 | 8486 | 2 | UNIVERSAL JOINT (X-KIT) |
| 3 | 8384 | 1 | SPRING PIN |
| 4 | 8489 | 1 | YOKE, F/OUTER TUBE |
| 5 | 00776310 | 1 | OUTER TUBE, (STAR SHAPED PROFILE) |
| 6 | 00776311 | 1 | INNER TUBE & OVER RUNNING CLUTCH ASY (STAR SHAPED SHAFT) |
| 8 | 00776317 | 1 | CLUTCH ASY, (6 SPRING CLUTCH) |
| 9 | 8949 | 1 | SHIELD CONE |
| 12 | 8393 | 2 | BEARING RING |
| 14 | 00759217 | 2 | SCREW |
| 16 | 8974 | 1 | SUPPORT BEARING |
| 17 | 1416601 | | GREASE FITTING |
| 18 | 00776313 | 1 | SHIELD HALF, OUTER |
| 19 | 00776314 | 1 | SHIELD HALF, INNER |
| 21 | 00776320 | 1 | DRIVELINE HALF ASY, IMPLEMENT HALF W/ CLUTCH |
| 22 | 00776321 | 1 | DRIVELINE HALF ASY,TRACTOR HALF |

DRIVELINE ASY - 1000 RPM - S/N GO72-10239 & DOWN

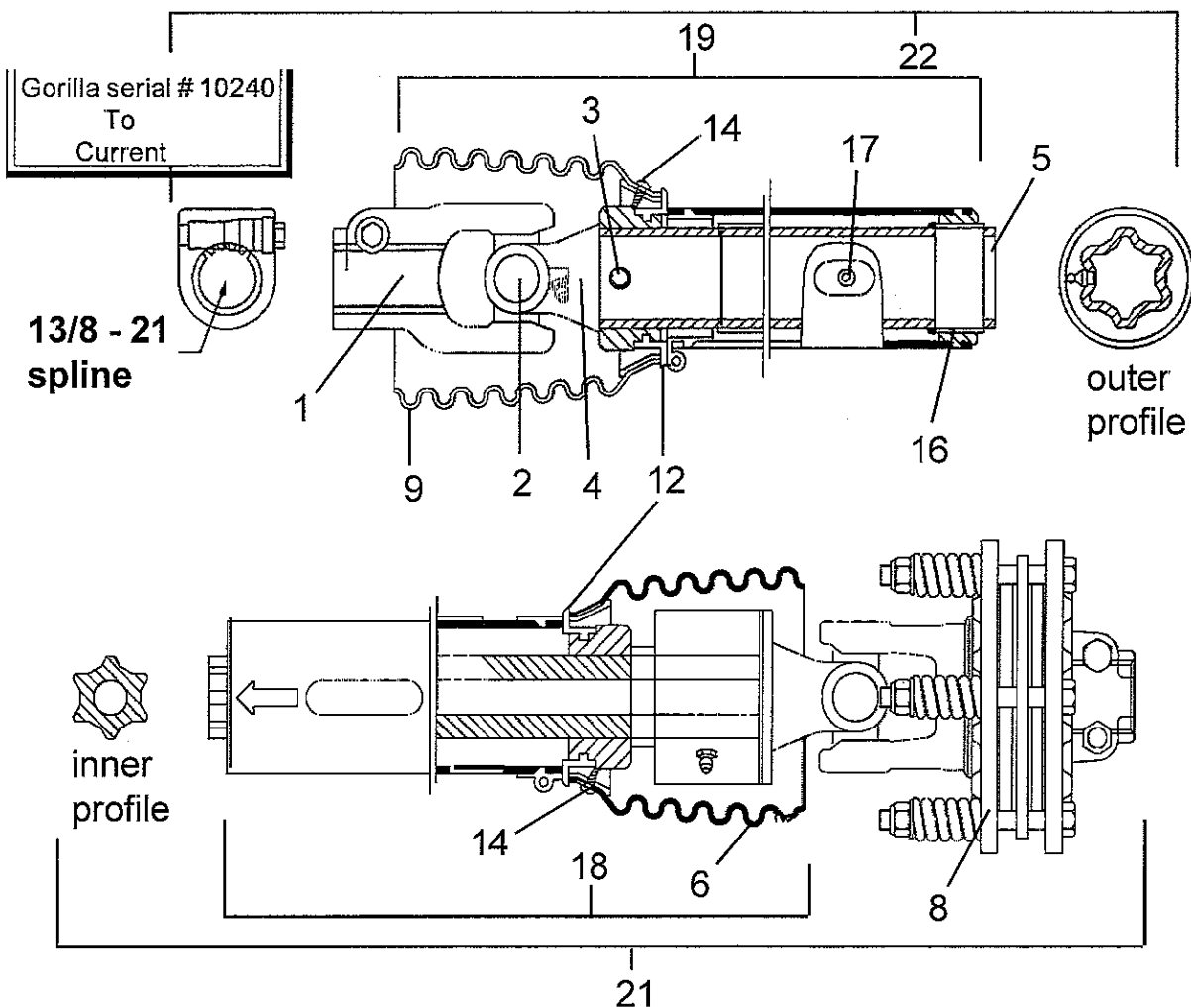
Gorilla Thru serial
10239



DRIVELINE ASY - 1000 RPM - S/N GO72-10239 & DOWN

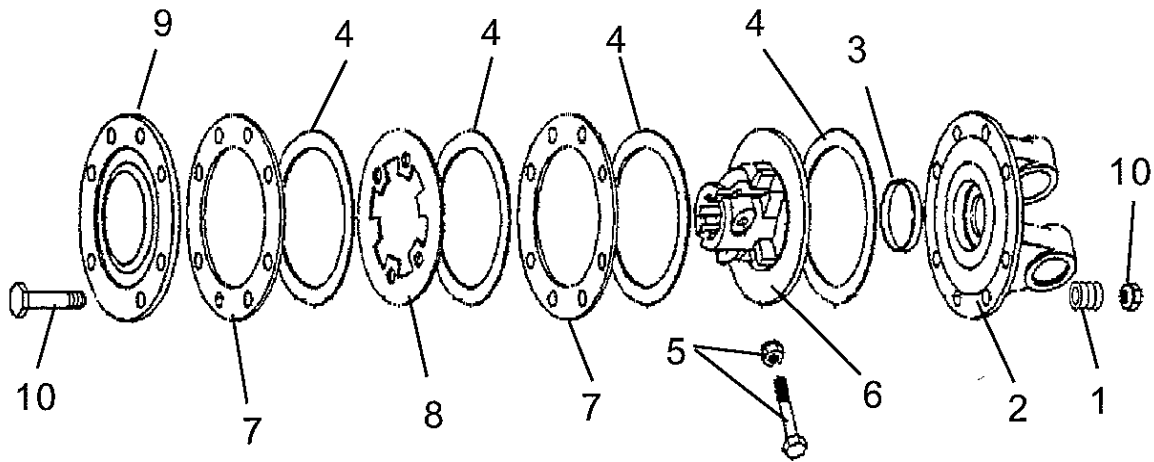
| ITEM | PART NO. | QTY. | DESCRIPTION |
|------|-----------------|------|--|
| -- | 00771369 | -- | DRIVELINE ASY (TRIANGLE SHAPED SHAFT & TUBE) |
| 1 | 00772086 | 1 | QD YOKE & OVER RUNNING CLUTCH ASY |
| 2 | 00753068 | 2 | UNIVERSAL JOINT, (X-KIT) |
| 3 | 00766555 | 1 | YOKE, F/ OUTER TUBE |
| 4 | 00758159 | 1 | ROLL PIN |
| 5 | 00772069 | 1 | TUBE, OUTER (TRIANGLE SHAPED TUBE) |
| 6 | 00772070 | 1 | SHAFT, INNER (TRIANGLE SHAPED SHAFT) |
| 7 | 00758160 | 1 | ROLL PIN |
| 8 | 00766556 | 1 | YOKE, F/ INNER SHAFT |
| 9 | 00772095 | 1 | CLUTCH & YOKE ASY. (8 SPRING CLUTCH) |
| 10 | 00765420 | 6 | LOCKING COLLAR, OUTER SHIELD |
| 11 | 00754330 | 1 | BOLT |
| 12 | 00765417 | 1 | LOCKING COLLAR, INNER SHIELD |
| 13 | 00772071 | 1 | OUTER CIRCLIP |
| 14 | 00772072 | 1 | SLIDING SLEEVE COLLAR |
| 15 | 00772073 | 1 | BALL HOLD - UP RING |
| 16 | 00772074 | 1 | SPRING |
| 17 | 00772075 | 1 | SPRING PUSH RING |
| 18 | 00772076 | 1 | INNER CIRCLIP |
| 19 | 00772077 | 1 | RETAINING WASHER |
| 20 | 00772078 | 3 | BALL |
| 21 | 00772088 | 1 | HUB |
| 22 | 00772080 | 3 | TANG |
| 23 | 00772081 | 3 | CARRIAGE SPRING |
| 24 | 00772091 | 1 | RETAINING WASHER |
| 25 | 00772082 | 2 | GREASE FITTING |
| 26 | 00772083 | 1 | OUTER YOKE |
| 27 | 00754303 | 8 | SPRING CLUTCH |
| 28 | 00754083 | 1 | FLANGED YOKE |
| 29 | 00754301 | 1 | BUSHING |
| 30 | 00754202 | 4 | CLUTCH LINING RING |
| 31 | 00755600 | 2 | BOLT & NUT |
| 32 | 00755599 | 1 | CLUTCH SUPPORT |
| 33 | 00754314 | 2 | INNER PLATE |
| 34 | 00754201 | 1 | INTERMEDIATE PLATE |
| 35 | 00766810 | 1 | PRESSURE PLATE |
| 36 | 00765442 | 8 | BOLT & NUT |
| 37 | 00772106 | 1 | SHIELD HALF ASY, OUTER |
| 38 | 00772107 | 1 | SHIELD HALF ASY, INNER |
| 39 | 00772089 | 1 | DRIVELINE HALF ASY, OUTER SHAFT W / SHIELD & OVER RUNNING CLUTCH |
| 40 | 00772090 | 1 | DRIVELINE HALF ASY, INNER SHAFT W / SHIELDS AND CLUTCH ASY |

DRIVELINE ASY - 1000 RPM - S/N GO72-10240 & UP



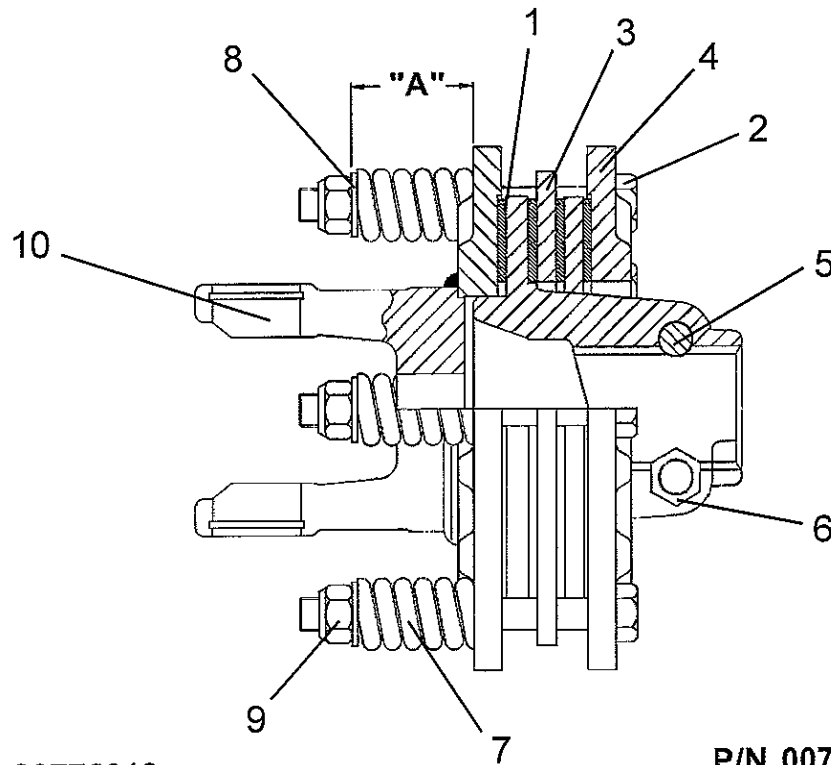
| ITEM | PART NO. | QTY. | DESCRIPTION |
|------|-----------------|------|--|
| -- | 00776309 | -- | DRIVELINE ASY, W/ CLUTCH, SHIELDS & OVER RUNNING CLUTCH (STAR SHAPE SHAFT & TUBE) |
| 1 | 00776319 | 1 | YOKE ASY, QD 1-3/8" X 21 SPLINE |
| 2 | 8486 | 2 | UNIVERSAL JOINT (X-KIT) |
| 3 | 8384 | 1 | SPRING PIN |
| 4 | 8489 | 1 | YOKE, F/ OUTER TUBE |
| 5 | 00776310 | 1 | TUBE, OUTER (STAR SHAPED TUBE) |
| 6 | 00776311 | 1 | SHAFT ASY, INNER W/ OVER RUNNING CLUTCH ASY (STAR SHAPED SHAFT) |
| 8 | 00776312 | 1 | CLUTCH ASY, (6 SPRING CLUTCH) |
| 9 | 8949 | 1 | SHIELD CONE |
| 12 | 8393 | 2 | BEARING RING |
| 14 | 00759217 | 2 | SCREW |
| 16 | 8974 | 1 | SUPPORT BEARING |
| 17 | 1416601 | | GREASE FITTING |
| 18 | 00776313 | 1 | SHIELD HALF ASY, OUTER |
| 19 | 00776314 | 1 | SHIELD HALF ASY, INNER |
| 21 | 00776307 | 1 | DRIVELINE HALF ASY, W/ CLUTCH, SHIELD & OVERRUNNING CLUTCH, IMPLEMENT END |
| 22 | 00776308 | 1 | DRIVELINE HALF ASY, W/ QD YOKE & SHIELD, TRACTOR END |

SLIP CLUTCH ASY - 8 SPRING CLUTCH - S/N GO72-10239 & DOWN



| ITEM | PART NO. | QTY. | DESCRIPTION |
|------|-----------------|------|--|
| | 00772087 | -- | CLUTCH ASY, 8 SPRING (540 RPM ONLY) |
| | 00772095 | -- | CLUTCH ASY, 8 SPRING (1000 RPM ONLY) |
| 1 | 00754303 | 8 | SPRING, (ADJUST TO 1-5/16" MIN COMPRESSION LENGTH) |
| 2 | 00754083 | 1 | YOKE, CLUTCH |
| 3 | 00754301 | 1 | BUSHING |
| 4 | 00754202 | 4 | RING, CLUTCH LINING |
| 4 | 00754202 | 4 | RING, CLUTCH LINING |
| 5 | 00755600 | 2 | BOLT & NUT ASY, M14 X 70MM |
| 6 | 00755599 | 1 | BODY, FRICTION CLUTCH |
| 7 | 00754314 | 2 | PLATE W/ HOLES |
| 8 | 00754201 | 1 | INNER PLATE |
| 9 | 00766810 | 1 | PRESSURE PLATE |
| 10 | 00765442 | 8 | BOLT & NUT ASY, M10-P1.5 X 100MM |

SLIP CLUTCH ASY - 6 SPRING CLUTCH - S/N GO72-10240 & UP



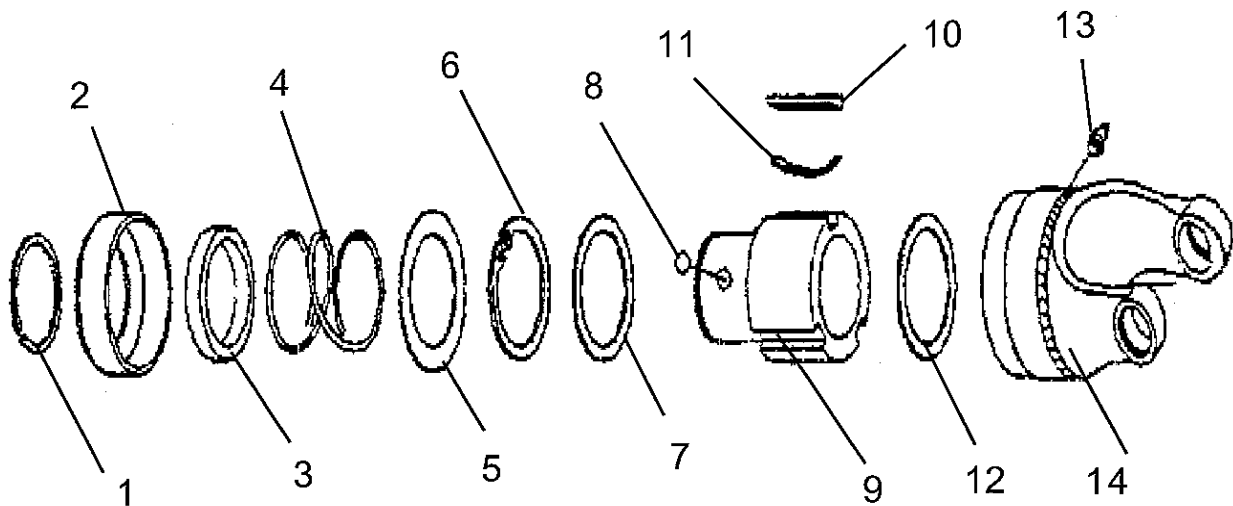
**P/N 00776312
(1000 RPM)**

**P/N 00776317
(540 RPM)**

NOTE: "A" = Adjustment Slip Clutch Spring Height
 P/N 00776312 distance "A" = 1-9/16" Spring Height
 P/N 00776317 distance "A" = 1-1/2" Spring Height

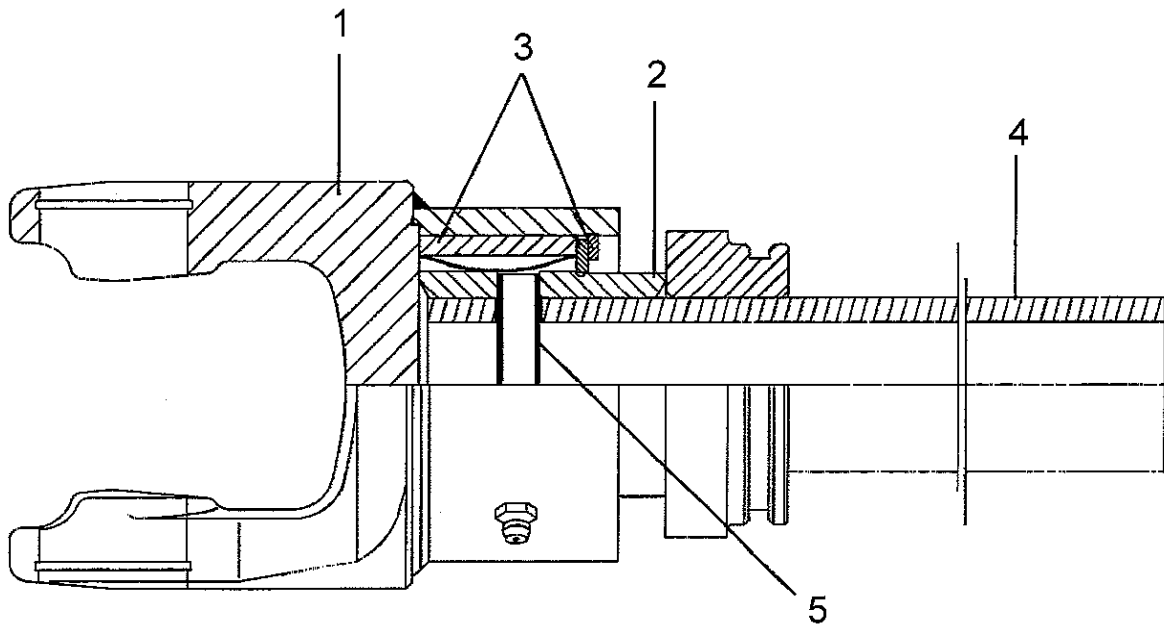
| ITEM | PART NO. | QTY. | DESCRIPTION |
|------|-----------------|------|-----------------------------|
| -- | 00776312 | -- | SLIP CLTUCH ASSEMBLY |
| -- | 00776317 | -- | SLIP CLUTCH ASSEMBLY |
| 1 | 8366 | 4 | CLUTCH LINING |
| 2 | 00775338 | 6 | BOLT |
| 3 | 00775335 | 1 | DRIVE PLATE |
| 4 | 00775337 | 1 | THRUST PLATE |
| 5 | 61076C8 | 2 | BOLT |
| 6 | 00756164 | 2 | LOCKNUT |
| 7 | 00775339 | 6 | COMPRESSION SPRING |
| 8 | 00754566 | 6 | LOCKWASHER |
| 9 | 00755881 | 6 | LOCKNUT |
| 10 | 00776338 | 1 | FLANGE YOKE |

OVER RUNNING CLUTCH ASY - S/N GO72-10239 & DOWN



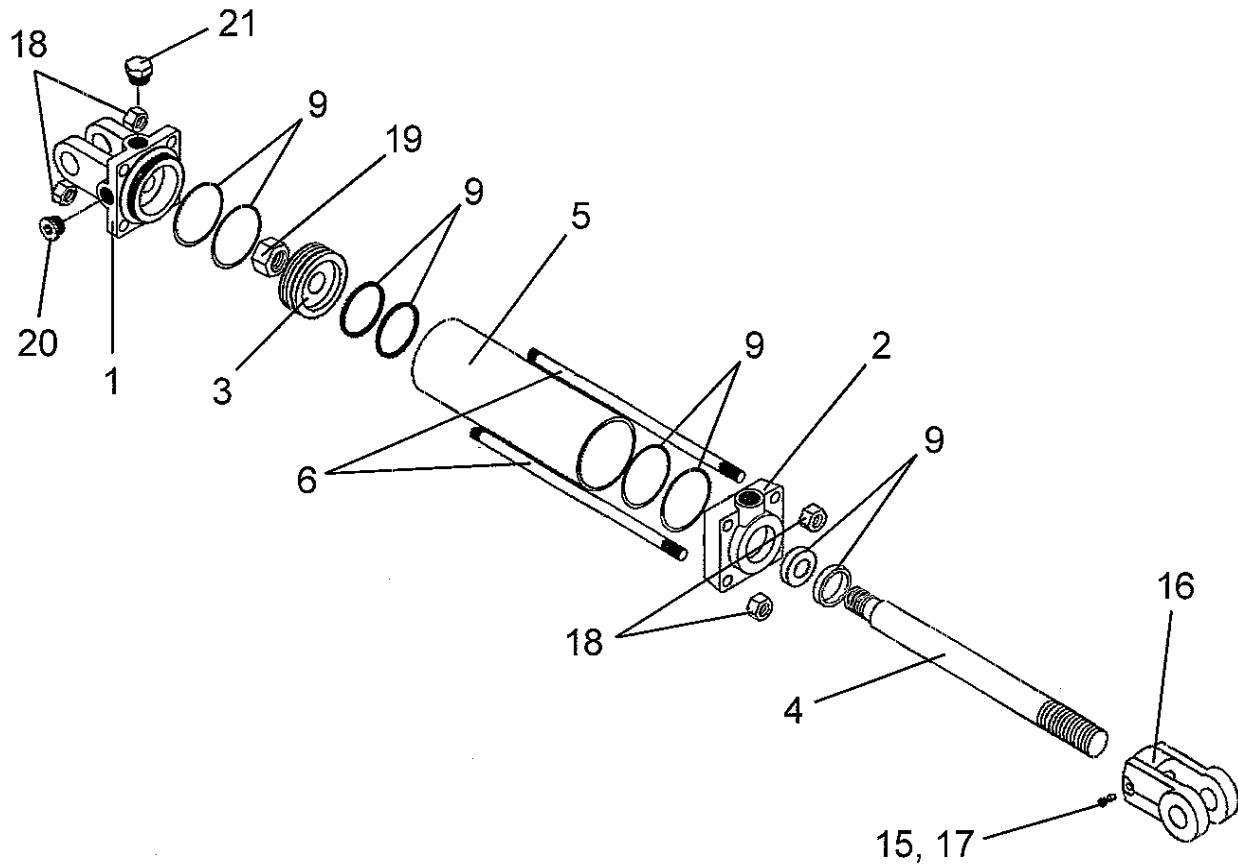
| ITEM | PART NO. | QTY. | DESCRIPTION |
|------|-----------------|------|---|
| | 00772068 | -- | OVER RUNNING CLUTCH ASY, 1-3/8" X 6 SPL (540 RPM) |
| | 00772086 | -- | OVER RUNNING CLUTCH ASY, 1-3/8" X 21SPL (1000 RPM) |
| 1 | 00772071 | 1 | OUTER CIRCLIP |
| 2 | 00772072 | 1 | SLIDING SLEEVE COLLAR |
| 3 | 00772073 | 1 | BALL HOLD UP RING |
| 4 | 00772074 | 1 | SPRING |
| 5 | 00772075 | 1 | SPRING PUSH RING |
| 6 | 00772076 | 1 | INNER CIRCLIP |
| 7 | 00772077 | 1 | WASHER, RETAINING |
| 8 | 00772078 | 3 | BALL |
| 9 | 00772079 | 1 | HUB, 1-3/8" X 6 SPL (540 RPM) |
| | 00772088 | 1 | HUB, 1-3/8" X 21 SPL (1000 RPM) |
| 10 | 00772080 | 3 | TANG |
| 11 | 00772081 | 3 | CARRIAGE SPRING |
| 12 | 00772091 | 1 | WASHER, RETAINING |
| 13 | 00772082 | 2 | NIPPLE, GREASE M8X1 |
| 14 | 00772083 | 1 | YOKE, OUTER |

OVER RUNNING CLUTCH ASY - S/N GO72-10240 & UP



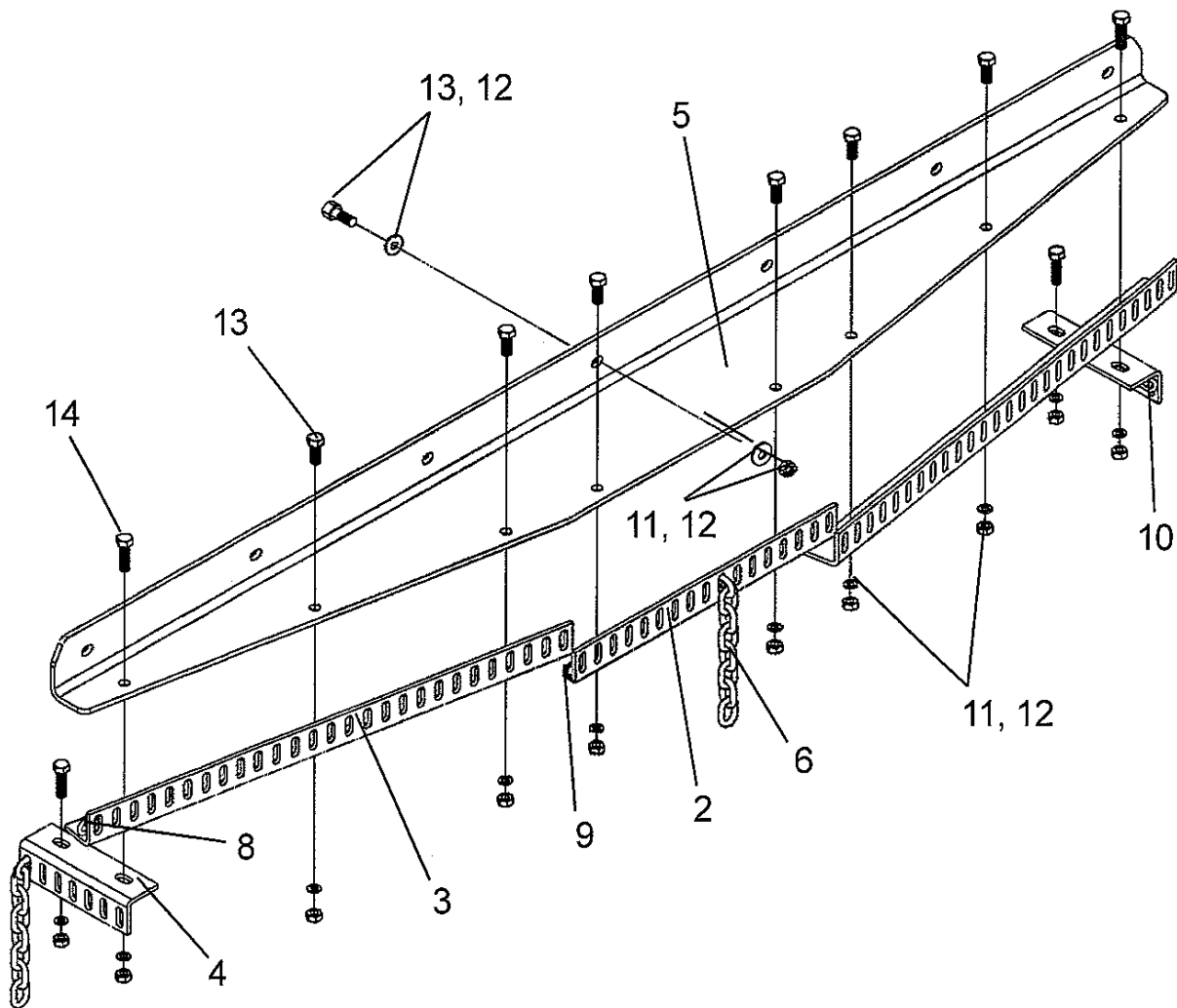
| ITEM | PART NO. | QTY. | DESCRIPTION |
|------|----------|------|--|
| 1 | 00776339 | 1 | YOKE & CLUTCH HOUSING, USED ON 540 OR 1000 RPM |
| 2 | 00776340 | 1 | HUB |
| 3 | 00776341 | 1 | SPRING PIN |
| 4 | 00776342 | 1 | INNER PROFILE |
| 5 | 00776343 | 1 | SERVICE KIT (NOT SHOWN) |

HYDRAULIC CYLINDER ASY.



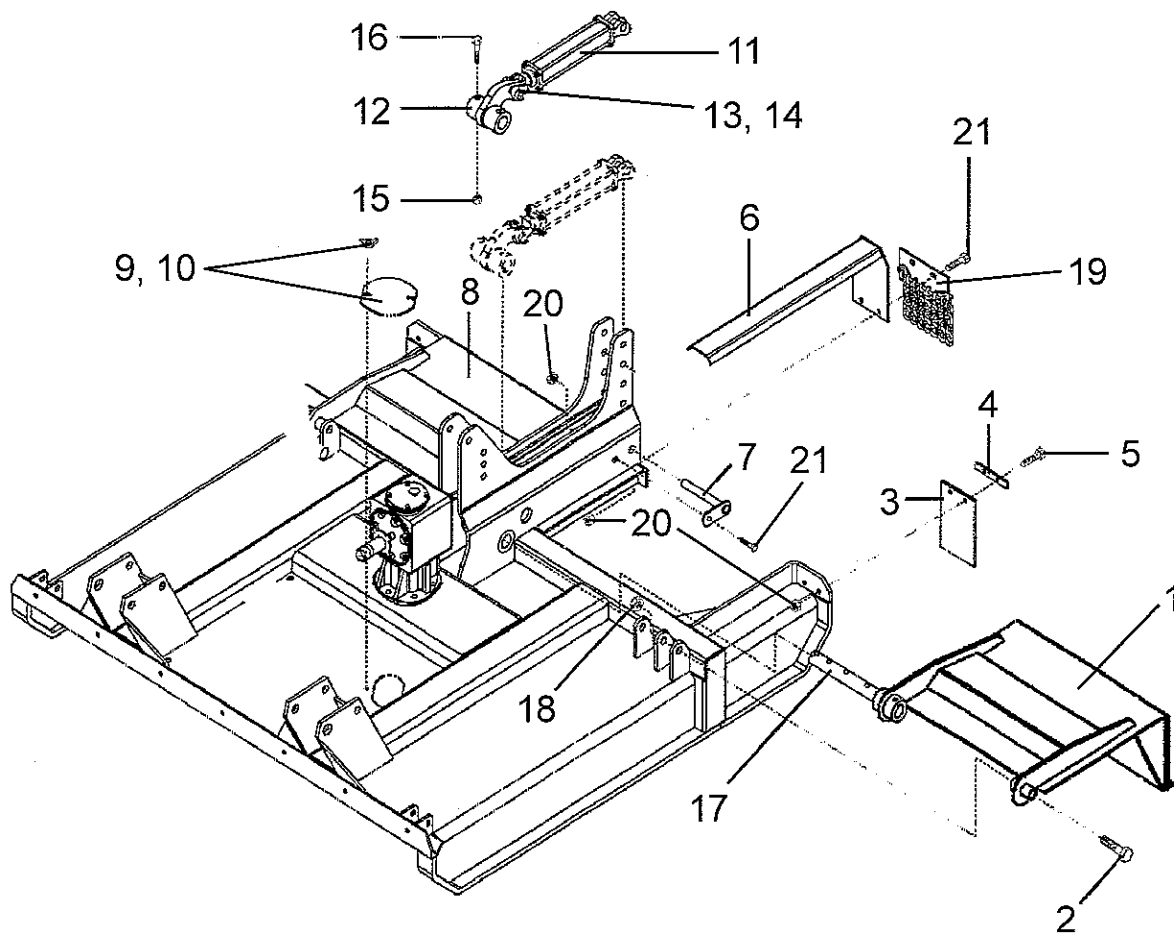
| ITEM | PART NO. | QTY. | DESCRIPTION |
|------|-----------|------|---------------|
| 1 | 00774729 | 1 | CLEVIS CAP |
| 2 | 00774734 | 1 | ROD CAP |
| 3 | 00774730 | 1 | PISTON |
| 4 | 00774753 | 1 | ROD |
| 5 | 3047111 | 1 | TUBE |
| 6 | 3047112 | 4 | TIE ROD |
| 9 | 00774760 | 1 | SEAL KIT |
| 15 | 3047117 | 1 | THREAD LOCK |
| 16 | 1917140 | 1 | ROD CLEVIS |
| 17 | 00774740 | 1 | SET SCREW |
| 18 | 33003H5C | 8 | TIE ROD NUT |
| 19 | 5JRC12160 | 1 | PISTON NUT |
| 20 | 1917132 | 1 | PORT PLUG |
| 21 | 2417154 | 1 | BREATHER PLUG |

CHAIN GUARD ASY.



| ITEM | PART NO. | QTY. | DESCRIPTION |
|------|------------|------|-------------------------|
| 2 | 00776755 | 1 | FRONT CHAINGUARD ASY. |
| 3 | 00776753 | 2 | SIDE CHAINGUARD ASY. |
| 4 | 00776754 | 2 | SIDE CHAINGUARD BRKT. |
| 5 | 00776757 | 1 | CHAINGUARD BRKT. |
| 6 | 00751126 | 79 | CHAIN 6 LINK - 5/16 WLD |
| 8 | 00761178 | 1 | ROD |
| 9 | 0623041102 | 2 | ROD |
| 10 | 00756841 | 2 | ROD |
| 11 | 00001800 | 11 | LOCKNUT |
| 12 | 00002700 | 11 | FLATWASHER |
| 13 | 02030700 | 9 | BOLT |
| 14 | 00748823 | 2 | BOLT |
| | 00023100 | 14 | BOLT |
| | 00011100 | 14 | FLATWASHER |
| | 00015800 | 14 | LOCKNUT |

REAR GUARD ASY.



| ITEM | PART NO. | QTY. | DESCRIPTION |
|------|----------|------|---------------------------|
| 1 | 00744065 | 1 | DOOR WLD'MT, LH |
| 2 | 00750477 | 2 | BOLT |
| 3 | 00774652 | 2 | REAR SIDE DEFLECTOR |
| 4 | 00774654 | 2 | REAR SIDE DEFLECTOR STRAP |
| 5 | 00749130 | 4 | BOLT |
| 6 | 00775751 | 1 | CYLINDER COVER WLD'MT |
| 7 | 00773689 | 1 | CYLINDER PIN WLD'MT |
| 8 | 00775750 | 1 | DOOR WLD'MT, RH |
| 9 | 00775757 | 1 | PLATE COVER |
| 10 | 5F5180 | 2 | WING NUT |
| 11 | 8727A | 1 | HYDRAULIC CYLINDER |
| 12 | 00773684 | 1 | CYLINDER LUG WLD'MT |
| 13 | 8354 | 1 | CYLINDER PIN |
| 14 | 162012 | 1 | COTTER PIN |
| 15 | 00695100 | 2 | LOCKNUT |
| 16 | 02845600 | 2 | BOLT |
| 17 | 00773685 | 1 | DOOR PIN |
| 18 | 02030300 | 2 | LOCKNUT |
| 19 | 00773708 | 1 | REAR CHAIN GUARD ASY. |
| 20 | 00001800 | 7 | LOCKNUT |
| 21 | 00748823 | 3 | BOLT |

ALAMO INDUSTRIAL

LIMITED WARRANTY

1. LIMITED WARRANTIES

- 1.01. Alamo Industrial warrants for one year from the purchase date to the original non-commercial, governmental, or municipal purchaser ("Purchaser") and warrants for six months to the original commercial or industrial purchaser ("Purchaser") that the goods purchased are free from defects in material or workmanship.
- 1.02. Manufacturer will replace for the Purchaser any part or parts found, upon examination at one of its factories, to be defective under normal use and service due to defects in material or workmanship.
- 1.03. This limited warranty does not apply to any part of the goods which has been subjected to improper or abnormal use, negligence, alteration, modification, or accident, damaged due to lack of maintenance or use of wrong fuel, oil, or lubricants, or which has served its normal life. This limited warranty does not apply to any part of any internal combustion engine, or expendable items such as blades, shields, guards, or pneumatic tires except as specifically found in your Operator's Manual.
- 1.04. Except as provided herein, no employee, agent, Dealer, or other person is authorized to give any warranties of any nature on behalf of Manufacturer.

2. REMEDIES AND PROCEDURES.

- 2.01. This limited warranty is not effective unless the Purchaser returns the Registration and Warranty Form to Manufacturer within 30 days of purchase.
- 2.02. Purchaser claims must be made in writing to the Authorized Dealer ("Dealer") from whom Purchaser purchased the goods or an approved Authorized Dealer ("Dealer") within 30 days after Purchaser learns of the facts on which the claim is based.
- 2.03. Purchaser is responsible for returning the goods in question to the Dealer.
- 2.04. If after examining the goods and/or parts in question, Manufacturer finds them to be defective under normal use and service due to defects in material or workmanship, Manufacturer will:
 - (a) Repair or replace the defective goods or part(s) or
 - (b) Reimburse Purchaser for the cost of the part(s) and reasonable labor charges (as determined by Manufacturer) if Purchaser paid for the repair and/or replacement prior to the final determination of applicability of the warranty by Manufacturer.The choice of remedy shall belong to Manufacturer.
- 2.05. Purchaser is responsible for any labor charges exceeding a reasonable amount as determined by Manufacturer and for returning the goods to the Dealer, whether or not the claim is approved. Purchaser is responsible for the transportation cost for the goods or part(s) from the Dealer to the designated factory.

3. LIMITATION OF LIABILITY.

- 3.01. MANUFACTURER DISCLAIMS ANY EXPRESS (EXCEPT AS SET FORTH HEREIN) AND IMPLIED WARRANTIES WITH RESPECT TO THE GOODS INCLUDING, BUT NOT LIMITED TO, MERCHANTABILITY AND FITNESS FOR A PARTICULAR PURPOSE.
- 3.02. MANUFACTURER MAKES NO WARRANTY AS TO THE DESIGN, CAPABILITY, CAPACITY, OR SUITABILITY FOR USE OF THE GOODS.
- 3.03. EXCEPT AS PROVIDED HEREIN, MANUFACTURER SHALL HAVE NO LIABILITY OR RESPONSIBILITY TO PURCHASER OR ANY OTHER PERSON OR ENTITY WITH RESPECT TO ANY LIABILITY, LOSS, OR DAMAGE CAUSED OR ALLEGED TO BE CAUSED DIRECTLY OR INDIRECTLY BY THE GOODS INCLUDING, BUT NOT LIMITED TO, ANY INDIRECT, SPECIAL, CONSEQUENTIAL, OR INCIDENTAL DAMAGES RESULTING FROM THE USE OR OPERATION OF THE GOODS OR ANY BREACH OF THIS WARRANTY. NOT WITHSTANDING THE ABOVE LIMITATIONS AND WARRANTIES, MANUFACTURER'S LIABILITY HEREUNDER FOR DAMAGES INCURRED BY PURCHASER OR OTHERS SHALL NOT EXCEED THE PRICE OF THE GOODS.
- 3.04. NO ACTION ARISING OUT OF ANY CLAIMED BREACH OF THIS WARRANTY OR TRANSACTIONS UNDER THIS WARRANTY MAY BE BROUGHT MORE THAN TWO (2) YEARS AFTER THE CAUSE OF ACTION HAS OCCURRED.

4. MISCELLANEOUS.

- 4.01. Proper Venue for any lawsuits arising from or related to this limited warranty shall be only in Guadalupe County, Texas.
- 4.02. Manufacturer may waive compliance with any of the terms of this limited warranty, but no waiver of any terms shall be deemed to be a waiver of any other term.
- 4.03. If any provision of this limited warranty shall violate any applicable law and is held to be unenforceable, then the invalidity of such provision shall not invalidate any other provisions herein.
- 4.04. Applicable law may provide rights and benefits to purchaser in addition to those provided herein.

KEEP FOR YOUR RECORDS

ATTENTION: Purchaser should fill in the blanks below for his reference when buying repair parts and/or for proper machine identification when applying for warranty.

Alamo Industrial Implement Model _____ Serial Number _____

Date Purchased _____ Dealer _____

ATTENTION:
READ YOUR OPERATOR'S MANUAL

ALAMO INDUSTRIAL

An Alamo Group Company
Post Office Drawer 549
Seguin, Texas 78156
830-379-1480





TO THE OWNER/OPERATOR/DEALER

To keep your implement running efficiently and safely, read your manual thoroughly and follow these directions and the Safety Messages in this Manual. The Table of Contents clearly identifies each section where you can easily find the information you need.

The OCCUPATIONAL SAFETY AND HEALTH ACT (1928.51 Subpart C) makes these minimum safety requirements of tractor operators:

REQUIRED OF THE OWNER:

1. Provide a Roll-Over-Protective Structure that meets the requirements of this Standard; and
2. Provide Seatbelts that meet the requirements of this paragraph of this Standard and SAE J4C; and
3. Ensure that each employee uses such Seatbelt while the tractor is moving; and
4. Ensure that each employee tightens the Seatbelt sufficiently to confine the employee to the protected area provided by the ROPS.

REQUIRED OF THE OPERATOR

1. Securely fasten seatbelt if the tractor has a ROPS.
2. Where possible, avoid operating the tractor near ditches, embankments, and holes.
3. Reduce speed when turning, crossing slopes, and on rough, slick, or muddy surfaces.
4. Stay off slopes too steep for safe operation.
5. Watch where you are going - especially at row ends, on roads, and around trees.
6. Do not permit others to ride.
7. Operate the tractor smoothly - no jerky turns, starts, or stops.
8. Hitch only to the drawbar and hitch points recommended by the tractor manufacturer.
9. When the tractor is stopped, set brakes securely and use park lock, if available.

-
-
- Keep children away from danger all day, every day...**
 - Equip tractors with rollover protection (ROPS) and keep all machinery guards in place...**
 - Please work, drive, play and live each day with care and concern for your safety and that of your family and fellow citizens.**

